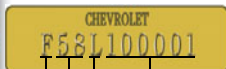


Chevrolet V.I.N. Information

1958-59 Models

1958-59 models have the vehicle Identification number located on a steel plate riveted to the left door jamb on the hinge pillar.



Series Year
 Assembly Plant
 Sequential Production Number

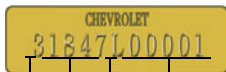
1st Digit: Model Series:		
A = 1100	6 Cylinder	
B = 1200	8 Cylinder	
C = 1500	6 Cylinder	
D = 1600	6 Cylinder	
E = 1700	6 Cylinder	
F = 1800	6 Cylinder	
G = 1100	Sedan Delivery only	6 Cylinder
H = 1200	Sedan Delivery only	8 Cylinder

2nd & 3rd Digits: Model Year:	
58 = 1958	
59 = 1959	

4th Digit: Assembly Plant:	
A = Atlanta, Georgia	
B = Baltimore, Maryland	
F = Flint, Michigan	
G = Framingham, Massachusetts	
J = Janesville, Wisconsin	
K = Kansas City, Missouri	
L = Los Angeles, California	
N = Norwood, Ohio	
O = Oakland, California	
S = St. Louis, California	
T = Tarrytown, New York	
W = Willow Run, Michigan	

1960-64 Models

1960-64 models have the vehicle Identification number located on a steel plate riveted to the left door jamb on the hinge pillar.



Year Series
 Assembly Plant
 Sequential Production Number

1st Digit: Model Year:	
0 = 1960	
1 = 1961	
2 = 1962	
3 = 1963	
4 = 1964	

1960-64 Models

continued

2nd Through 5th Digits: Model Series				
Series	6 Cyl.	8 Cyl.	Model	
1960				
Biscayne	11 12	11, 15, 19, 21, 35, 70, 80		
Fleetmaster	13 14	11, 19		
Bel Air	15 16	11, 19, 35, 37, 39, 45		
Impala	17 18	19, 35, 37, 39, 67		
1961				
Biscayne	11 12	11, 21, 35, 45, 69		
Fleetmaster	13 14	11, 69		
Bel Air	15 16	11, 35, 37, 39, 45, 69		
Impala	17 18	11, 35, 37, 39, 45, 67, 69		
1962				
Biscayne	11 12	11, 35, 69		
Bel Air	15 16	11, 35, 37, 45, 69		
Impala	17 18	35, 39, 45, 47, 67, 69		
1963				
Biscayne	11 12	11, 35, 69		
Bel Air	15 16	11, 35, 45, 69		
Impala	17 18	35, 39, 45, 47, 67, 69		
1964				
Biscayne	11 12	11, 35, 69		
Super Sport	13 14	47, 67		
Bel Air	15 16	11, 35, 45, 69		
Impala	17 18	35, 39, 45, 47, 67, 69		

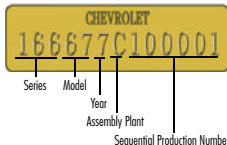
6TH Digit: Assembly Plant:	Years Produced This Location:
A = Atlanta, Georgia	0, 1, 2, 3, 4
B = Baltimore, Maryland	0, 1, 2, 3
C = Danville, Georgia	4
F = Flint, Michigan	0, 1, 2, 3, 4
G = Framingham, Massachusetts	0, 1, 2, 3, 4
J = Janesville, Wisconsin	0, 1, 2, 3, 4
K = Kansas City, Missouri	0, 1, 2, 3
L = Los Angeles, California	0, 1, 2, 3, 4
N = Norwood, Ohio	0, 1, 2
O = Oakland, California	0, 1
R = Arlington, Texas	3, 4
S = St. Louis, California	0, 1, 2, 3, 4
T = Tarrytown, New York	0, 1, 2, 3, 4
U = Southgate, California	4
W = Willow Run, Michigan	0
Y = Wilmington, Delaware	4

1965-71 Models

1965-71 Models

1965-67 models have the vehicle Identification number located on a steel plate riveted to the left door jamb on the hinge pillar.

1968-71 models have the vehicle Identification number located on a steel plate riveted to the upper dash panel. Visible through the driver's side lower corner of the windshield, from the outside of the vehicle.



1st Through 5th Digits: Model Series:				
Series	6 Cyl.	8 Cyl.	Model	
1965				
Biscayne	153 154	11, 35, 69		
Bel Air	155 156	11, 35, 69		
Impala	163 164	35, 37, 39, 45, 67, 69		
Super Sport	165 166	37, 67		
1966				
Biscayne	153 154	11, 35, 69		
Bel Air	155 156	11, 35, 69		
Impala	163 164	35, 37, 39, 45, 67, 69		
Caprice	X 166	35, 39, 45, 47		
1967				
Biscayne	153 154	11, 35, 69		
Bel Air	155 156	11, 35, 45, 69		
Impala	163 164	35, 39, 45, 67, 69, 87		
Caprice	X 166	35, 39, 45, 47		
Impala SS	167 168	67, 87		
1968				
Biscayne	153 154	11, 35, 69		
Bel Air	155 156	11, 35, 45, 69		
Impala	163 164	35, 39, 45, 67, 69, 87		
Impala Custom	X 164	47		
Caprice	X 166	35, 39, 45, 47		
1969				
Biscayne	153 154	11, 36, 69		
Bel Air	155 156	11, 36, 46, 69		
Impala	163 164	37, 39, 67, 69		
Impala Custom	X 164	36, 46, 47		
Caprice	X 166	36, 39, 46, 47		

1970				
Biscayne	153 154	36, 69		
Bel Air	155 156	36, 46, 69		
Impala	163 164	36, 37, 39, 46, 47, 67, 69		
Caprice	X 166	36, 39, 46, 47		
1971				
Biscayne	153 154	11, 35, 69		
Bel Air	155 156	11, 35, 69		
Impala	163 164	35, 37, 39, 45, 67, 69		
Caprice	X 166	35, 39, 45, 47		

6th Digit: Model Year:	
5 =	1965
6 =	1966
7 =	1967
8 =	1968
9 =	1969

7TH Digit: Assembly Plant:	Years Produced This Location:
A = Atlanta, Georgia	5, 6
C = Southgate, California	5, 6, 7, 8, 9, 0, 1
D = Danville, Georgia	5, 6, 7, 8, 9, 0, 1
F = Flint, Michigan	5, 6, 7, 8, 9
G = Framingham, Massachusetts	5, 6
J = Janesville, Wisconsin	5, 6, 7, 8, 9, 0, 1
L = Los Angeles, California	5, 6, 7, 8, 9
N = Norwood, Ohio	5, 6
R = Arlington, Texas	5, 6, 7, 8, 9, 0
S = St. Louis, California	5, 6, 7, 8, 9, 0, 1
T = Tarrytown, New York	5, 6, 7, 8, 9, 0, 1
U = Lorain, Ohio	5, 6, 7, 8, 9, 0
Y = Wilmington, Delaware	5, 6, 7, 8, 9, 0, 1
D = Oshawa, Ontario, Canada	5, 6
1 = Oshawa, Ontario, Canada	8, 9, 0, 1
2 = St. Theres, Quebec, Canada	7, 8, 9, 0

Four Ways to Order!



ORDERING BY PHONE TOLL FREE 800-854-1280

In the continental United States, Hawaii and Alaska. Outside the U.S. call 714.847.6867.

Mon-Fri 8:00-5:00 Sat 10:00-3:00, P.S.T.
(Closed Sundays and holidays)

Information you'll need when ordering by Phone:

Customer Number

Found on back cover of your catalog above your name, this number allows Classic Industries® to quickly access your information. If you do not have a customer number, a new one will be given to you when placing your order.

Billing and Shipping Address

Please have the billing and shipping address available. Credit card orders are verified by name and address before shipping. Your order can be shipped to a different address, provided the cardholder's name and address match the credit card used. You may be asked to contact your credit card company to have the shipping address added to your account.

Year and Model of Vehicle

To provide the best possible service, we may require the year and model of your vehicle. This helps verify that the parts you order are correct for your car.

Part Numbers

All Classic Industries® products are listed with a part number. If possible, please have the part numbers of the products you're ordering available before calling to make the ordering process faster and more convenient.



ON-LINE ORDERING

www.classicindustries.com

Classic Industries® offers on-line ordering directly through our website. Log on to classicindustries.com and order on-line. On-line ordering is available 24 hours a day 7 days a week for your convenience.



ORDERING BY MAIL

Mail Your Completed Order Form To:

Classic Industries®
18460 Gothard St.
Huntington Beach, CA 92648
Attention: Order Dept.



ORDERING BY FAX

TOLL FREE 800-300-3081

In the continental United States, Hawaii and Alaska. Outside the U.S. call 714.847.6867.

Important: For assistance with your order form, see page entitled "How To Fill Out Your Order Form".

Service Excellence From the Restoration Leaders!



You No Longer Have To:

- ✗ Pay excessive fees to protect your merchandise
- ✗ Contact the carrier yourself
- ✗ File a damage claim yourself to have the carrier inspect the damaged items
- ✗ Send the damaged items back at your expense

With Classic Industries® the worry is eliminated!

PROCEDURE FOR RETURNING SHIPPING DAMAGES

We handle the claim so you don't have to! If any part you receive is damaged during shipping and handling, simply contact our customer service department toll-free at 800.854.1280 within two business days.

After verifying the damage, Classic Industries will issue a pick up call tag through the carrier that shipped the products. The carrier will pick up the damaged goods from your address and return them to us at no expense to you. After the product has been inspected, our customer service department will send a replacement part.

In order to ensure replacement of damaged products, please return items in their original box and packaging. Failure to do so may result in the claim being denied. Someone must be available at the pickup address to supply the damaged products when the carrier arrives. If the carrier is unable to pick up the products for any reason, the customer may be required to return the products at their expense.

Note: Some products are excluded from damage call tag pick up. Call a customer service representative for information about products that are not eligible.

ENJOY THE BENEFITS!

Money Back Guarantee



At Classic Industries®, we take pride in the quality of the products we offer and back it up with a 100% Money Back Guarantee. If for any reason you are not satisfied with a product or purchase, you can return the product within 30 days of receipt for a full refund, credit or exchange.

Not all restoration parts are created equal. But at Classic Industries®, we research each and every product we sell to make sure our customers are getting the highest quality products in the market. We have decades of experience in product selection and we painstakingly scrutinize every product we offer for quality manufacturing, materials, and craftsmanship before we will offer it in any of our catalogs. Many of our employees are automotive enthusiasts themselves. In fact, many were customers prior to becoming employees, so we understand the needs of the modern classic car enthusiast. Our product procurement specialists have made it their goal to select restoration products that have been manufactured using modern technology and materials with an emphasis on originality, longevity, and attention to detail. What else would you expect from the company that started it all? Classic Industries® is the name you can trust, and we'd like for you to consider us as your partner in restoration. When a company

continually offers a quality product for a reasonable price and backs up every sale with the best customer service in the industry, people come back! That's why Classic Industries® has been the leader in restoration for almost four decades. So, if you haven't already decided for yourself that Classic Industries® is the most logical choice as your restoration parts supplier, then check out our Money Back Guarantee. If for any reason you are not 100% satisfied with a product or purchase, you can return the product within 30 days of receipt for a full refund, credit, or exchange.

- ✓ **Lowest Prices Guaranteed!**
- ✓ **The Finest Quality Reproductions!**
- ✓ **No Fault Product Protection Offer!**
- ✓ **100% Satisfaction or Your Money Back!**



Price Match Guarantee



If you find it for less we'll match the price!

Classic Industries® will match any competitors current advertised price for an identical product. Simply send us a copy of the competitor's current advertised price from a catalog, advertisement or website (with URL) and we'll match the price. The price match guarantee is available at the time the order is placed and for in-stock merchandise only. Price matching will be determined by a competitor's most current retail-published price and is limited to competitors within the Restoration Industry.

Important: In an effort to provide our retail customers with the most competitive pricing available, we will match our current competitor's pricing. Price matching will be determined by a competitor's most current retail-published price and is limited to competitors within the "Restoration Industry". Performance parts and special orders are exempt from price matching policy. Classic Industries® reserves the right to decline price matching if

pricing is deemed to be a special offer, a sale or closeout price, or a non-current price. Competitors sale pricing, inventory reductions, close outs, special promotional offers, etc. may be exempt from the "price match" guarantee. The guarantee is subject to the terms and conditions of Classic Industries® current policies.

Classic Industries® will generally contact competitors to confirm that the published price is current due to market changes, demand or availability. Price matching supersedes all other promotional offers and on sale pricing. If Classic Industries® matches a price from a competitor, additional discounts on that product or products may not apply. If the standard retail price of a product is higher than the competitor's price and an applied discount reduces the price below the competitor's pricing, the now discounted or sale pricing will prevail. We reserve the right to change or revoke this offer at any time without notice. Classic Industries® reserves the right to decline price matching.

Think Of Us As Your Partner In Restoration!

A restoration can take years! We understand the complications and problems that can occur when ordering precious parts for your project car. If you are like most people, you want perfection. The many different elements that make up a restoration isn't just limited to the parts you install. You sometimes need to rely on other outside elements such as body shops, painters, upholstery specialists and parts suppliers. That's where we come in. We offer the quality parts you want without all the guesswork. We carry one of the largest inventories of restoration products and accessories the market has to offer. What's more, you can rely on our nearly

40 years of experience to help you through the rough spots when you need it. Our tech advisors are always ready and willing to discuss any problem you may have concerning the parts for your vehicle and your restoration. Unlike other companies, we give you knowledgeable sales representatives, one of the largest inventories in the business, quick and efficient delivery, Toll Free ordering, and the experience to back it up. If you're not absolutely 100% satisfied with the products you receive. We'll refund 100% of your money! Classic Industries® - your partner in restoration!

Form of Payment

How to Order



CREDIT CARDS

Classic Industries® accepts Visa, MasterCard, American Express, Optima, and Discover for your convenience. When placing your order, be sure to indicate the card holder's name, address, home phone, business phone, credit card number and expiration date and billing address (if different from person placing order). A security code is required for credit card purchases. Please have your credit card readily available when placing your order. Minimum order is \$20.00. New or 1st time customers who are paying by credit card must have the order shipped to the cardholder's billing address for the first order. Invalid or non-matching billing addresses could delay your shipment.

CERTIFIED CHECKS

Classic Industries® will accept certified checks for your mail order. Be sure to include customer number and/or reference invoice number. Contact your bank to issue a certified check in the amount due for your order. All orders paid by certified check are held up to 15 days pending clearance.

PERSONAL CHECKS

To use personal checks or business checks on prepaid orders, the name, address, and check number must be preprinted on the check. Be sure to include customer number and/or reference invoice number. Only first party checks will be accepted. All orders paid by personal check are held up to 15 days pending clearance.

MONEY ORDERS/CASHIERS CHECKS

To use money orders or cashiers checks on prepaid orders be sure to include customer number and/or reference invoice number. All orders paid by money order are held up to 15 days pending clearance. Once released the order will leave within 24 hours of clearance.

Make Personal Checks or Money Orders payable to:
Classic Industries®

PAYPAL

Classic Industries® now accepts payments via PayPal! Simply complete your order over the phone with a customer service representative, get your invoice number and then send your payment to paypal@classicindustries.com through PayPal's "Send Money" feature and select "Goods and Services" for payment reason. Be sure to include your invoice number in the "Special Instructions" tab at checkout for fastest service. Orders are generally shipped within 72 hours or less of payment receipt. Contact our customer service department for additional details.



MAIL ORDERS

Fill out the order form located in the back section of this catalog. For quick service use your credit card, money order, or cashiers check. Personal checks are held for 15 days from date of receipt pending clearance. All mail orders must be prepaid including freight (when applicable). COD orders through the mail will not be accepted. If you have any questions regarding product information or availability, contact our sales representatives during regular business hours at 800.854.1280.

ORDER BY PHONE

Classic Industries® employs knowledgeable sales representatives to assist you when placing your order. Our sales representatives are trained to answer your questions regarding restoration and the parts listed in this catalog. Call during regular business hours Mon-Fri 8:00-5:00, Sat 10:00-3:00, P.S.T. Closed Sundays and holidays. Our convenient Toll Free number allows you to place your order with confidence to assure you get exactly what you want when you want it! Inter-continental U.S. 800.854.1280. Outside U.S. country code + 1.714.847.6887

TOLL FREE 800-854-1280

FAX YOUR ORDER

Classic Industries® offers a convenient FAX line for customers who have access to a FAX machine. Our FAX is available 24 hours a day 7 days a week for your convenience. Fill out the order form completely and FAX your order. Within U.S. 800.300.3081. Outside U.S. country code + 1.714.848.9501

TOLL FREE 800-300-3081

ON-LINE ORDERING

Classic Industries® offers online ordering directly through our website. Log on to classicindustries.com and order online. Online ordering is available 24 hours a day 7 days a week for your convenience.

WWW.CLASSICINDUSTRIES.COM

FOREIGN ORDERS

All foreign orders must be prepaid before the products can be shipped. The Classic Industries® staff will check with the various freight companies that deliver to your country and area to determine the best possible rates available for your order. Once your order is rated, you'll be contacted by e-mail or phone to approve the rate. After approval and payment is received, the order will be shipped. The Shipping & Handling fee for foreign orders will state "TBD" (To Be Determined). Rates are subject to change once the order has been packed and is ready to ship. Rates are calculated based on estimations of weight, dimensions and other factors. Should changes in freight costs occur once the order is packed and ready to ship, Classic Industries® will notify the customer immediately before the shipment is sent. If you have any questions or concerns, please direct your inquiries to info-desk@classicindustries.com.

Color Matches

Due to multiple manufacturers of products Classic Industries® provides, color variations may occur. Slight color variations are common especially amongst interior products and do not constitute a defect. These products are not eligible for return for this reason.

Pricing

Current product pricing and our pricing policy can be found by visiting our website. Prices in this catalog were in effect at the time of printing and supersede all prices in any previous publication. Classic Industries® makes every effort to honor the prices contained herein. Due to constantly changing costs in raw materials, supply chain issues, and other unforeseen circumstances, pricing on products is subject to change. We reserve the right to change prices without notice. For current pricing, please go to ClassicIndustries.com, or contact a Classic Industries® sales representative during normal business hours. Eligibility of products for discounts are subject to change without notice.

Trademark and Copyright

Classic Industries® Parts and Accessories catalog is copyrighted. No part of this publication including text, photos or illustrations may be reproduced without the prior written permission of Classic Industries®. The following names and/or symbols: Mopar, Dodge, Plymouth, Barracuda, Belvedere, Coronet, Challenger, Charger, Cuda, Dart, Duster, Fury, GTX, Hemi, Polara, Road Runner, Six Pack, Super Bee, Scamp, Valiant are registered trademarks of Chrysler Group, LLC and are used for reference purposes only unless specified otherwise.

Product Availability

Availability of all items in this catalog are subject to change without notice. We reserve the right to discontinue products, services or accessories without notice.

Shortages

Always check the contents of your delivery to assure all the parts ordered were received. If you are missing any items be sure to check for back orders noted on your invoice before calling our customer service department (see back orders). If a shortage has occurred, contact our customer service department within 2 working days of delivery to assure a prompt replacement. Classic Industries® assumes no liability after this period.



General Information

Sales Tax Information

Classic Industries® collects and remits sales tax based on state and local requirements. The sales tax laws have changed due to a Supreme Court ruling in 2018. The appropriate sales tax will be applied to your order and remitted based on your state's requirements. If your order is shipped, or picked up in a specific state that requires sales tax, the appropriate amount will be added to your order.

Accuracy Of Descriptions

Classic Industries® makes every effort to verify the accuracy of all information published in this catalog. Each item is represented with information that is accurate to the best of our knowledge at the time the catalog is printed. Classic Industries® is not responsible or liable for mistakes, print errors or inaccurate information that may lead to, or result in labor costs or damages to any vehicle under any circumstances.

Kit Products

All Classic Industries® Parts and Accessories catalogs include kits which contain a variety of products. On occasion we may run out of an item supplied with a kit. If this happens we will generally ship what is in stock and back order the item(s) which are not in stock. You may contact our sales department by phone to verify which items are not in stock at the time the order is placed. The customer may decide whether to accept the partial kit or have the entire kit back ordered until the kit is completed and all the items can be shipped at the same time. If the customer decides to accept partial delivery of the kit, then the full price of the kit will be charged to the customer and the back ordered items will be shipped no charge when they arrive at our warehouse. Customers will be charged the appropriate freight as when applicable. Cancellation of products from a kit will be accepted at 25% below the actual current retail price of the item. On COD orders the price of the kit is charged in full and the back ordered items are shipped on a COD freight only basis.

Right and Lefts

Some items in this catalog are presented as left or right hand products (left side - driver in front side - passenger). LH or RH sides are determined by sitting in the vehicle, standing (right of the vehicle).

ALASKA, HAWAII, GUAM & PUERTO RICO

Orders being shipped to Alaska, Hawaii, Guam or Puerto Rico, are shipped via Ground, Overnight or 2-Day delivery whenever possible. All orders must be prepaid with credit card, money order, or check. NO COD orders are accepted. Rates depend on the items being shipped. Contact our sales department for exact rates.

Important: Promotional shipping offers do not apply to Alaska, Hawaii, Guam, Puerto Rico, Canada or any foreign destination.



APO/FPO

Parcel post is the only means of shipping to an APO or FPO address. Due to size restrictions, the maximum shipping box can be no larger than 72" width and girth combined. All military personnel must write or call to determine what size box will be used for the shipment. Once this is determined, Classic Industries® will call or write to let you know if the order can be shipped by Parcel Post, and the correct amount required. All orders that exceed these limitations will be shipped in accordance with customer approval.

INSURANCE

Each order is charged an insurance fee of \$3.50. This fee will insure the entire order and protect you completely from damages or loss. The order forms located in the rear of this catalog include this fee in the indicated column when your order is being totaled.

COD ORDERS

COD orders are gladly accepted on all normal ground shipments, excluding truck freight orders. COD orders will require cash only upon delivery of your order. All COD orders are shipped by FedEx. Personal checks, business checks, money orders and certified checks are not accepted. COD orders are not accepted through the mail. COD orders must be placed by phone during regular business hours. The appropriate shipping fees will be added. COD orders exempt from discounts and free shipping promotion. The customer will pay all appropriate fees in accordance with current policies and freight rates. A fee of \$11.95 per box will be added to all COD orders. Oversize and/or overweight boxes will be charged in accordance with the rate chart located on the order blank. Classic Industries® reserves the right to change shipping rates in accordance with rate increases by freight companies. COD orders are limited to \$999.00. If the COD order should be returned to Classic Industries® for non-acceptance/non payment, the customer will be responsible to reimburse Classic Industries® for any and all freight charges related to the order. In addition, a 25% restocking fee will be applied to the returned products. All outstanding charges must be paid before any additional orders will be accepted.

SPECIAL RATE SHIPPING FEES/DROP SHIP FEES

Some items we offer may require a mandatory shipping or drop ship fee. This fee may also apply to products sold over the counter at Classic Industries® Showroom location. Contact our sales department for actual additional shipping fees.

Important: Products with special rate shipping fees or drop ship fees are excluded from promotional shipping offers.



General Information

Back Orders

The invoice located in the packing slip of your order will note any items that were out of stock at the time of shipping. The unavailable items will be back ordered unless otherwise specified on your order form or verbally to a sales representative when placing your order by phone. Back orders are usually shipped when the products arrive at our warehouse without prior notification. Classic Industries® will make an effort to contact the customer if the backorder is more than 90 days old. If you wish to cancel a back order, please notify our customer service department immediately. The customer will be responsible for a 25% restocking fee and freight charges if the back order is cancelled or returned after the items are shipped.

Damage Claims

Always check the contents of your shipment in the presence of the person delivering the merchandise. Should any damage occur, immediately notify Classic Industries® customer service dept. so that all steps necessary will be taken to ensure a prompt replacement of any damaged goods. Accurate instructions will be given on damaged goods replacement. Classic Industries® is not responsible if no notification is given within 2 working days of receipt of goods (excluding Sundays and Holidays). Classic Industries® will file a claim with the carrier in most cases. If the customer files a claim with the carrier, Classic Industries® will not be responsible for replacing damaged products and the customer will be responsible to pay for any replacements until the carrier pays the claim. Any replacement parts due to sales errors or customer errors in ordering will be sent using the same shipping method as the original order when possible. Please follow these instructions to avoid any problems or misunderstandings associated with damaged products and freight claims.

Refusals

All refused COD orders will be subject to a 25% restocking fee. Classic Industries® will consider the entire order cancelled and void with no notification to the customer. The customer will be billed 25% full all freight charges to and from the destination. Contact our customer service department for more information.

Policies

All policies in Classic Industries® current catalog supersede any and all policies in any previous catalog or publication.

EXPRESS SHIPPING

Classic Industries® offers Overnight and 2-Day air delivery service in the Continental U.S., Alaska, Hawaii, Guam and Puerto Rico. Pre-payment with a credit card is required before shipments can be sent. Simply call in your order before 2:00 p.m. Pacific Time, Monday-Friday during regular business hours and your Overnight and 2-Day service will arrive the following business day (pending availability). Saturday delivery is available only on Overnight service. A \$16.95 fee will be added to Overnight fees for Saturday delivery. 2-Day orders will arrive within 2 business days (pending availability). 3-Day service is available within the contiguous 48 states. Your order will usually leave within 24 hours and will arrive within 3 business days of ship date (pending availability). A \$9.95 service fee for any of these options will be added in addition to shipping fees. Contact our sales department for rates regarding air service delivery. Rates depend on the items being shipped. Some products are charged at dimensional weight as opposed to actual weight.

Important: Air service does not guarantee your order will arrive on the expected date of delivery. Under normal circumstances, air service is guaranteed. However, due to adverse weather conditions, natural disasters or unforeseen circumstances, there may be delays. Classic Industries® is not responsible for deliveries that are delayed. Air service orders are excluded from promotional shipping offers.

TRUCK FREIGHT

Products in this catalog that require truck freight are typically indicated with a "Truck Freight" icon. This indicates that the product is too large for ground delivery and must be shipped by motor freight. There may be items listed herein that are not indicated as truck freight. These items must be prepaid, including freight charges, before the shipment can be sent. Truck freight rates may vary depending on products being ordered, fuel surcharges, and the shipping destination. Residential deliveries require an additional fee assessed by the carrier due to the additional coordination and transit outside of normal routes. Some Truck Freight shipments may require special handling (e.g., lift gate service, re-routings, additional freight charges, etc.). Acceptance of truck freight shipment, rate and applicable fees is acknowledged at time of order. For additional information visit us online at help.classicindustries.com or contact our customer service department during regular business hours.



OVERSIZE/OVERWEIGHT



These are the designations for Ground or Standard packages that meet one of the following specifications for billing purposes: Oversize 1 (OS1) designates a combined length and girth exceeding 84", but less than 108". Actual weight is less than 30 lbs. and is billed at 30 lbs. Oversize 2 (OS2) designates a combined length and girth exceeding 108", but less than 130". Actual weight is less than 70 lbs. and is billed at 70 lbs. Oversize 3 (OS3) designates a combined length and girth exceeding 130" but less than 165". A handling fee will be added to all (OS3) orders. Overweight 1, 2, and 3 designates actual weight is less than 90 lbs. and is billed at 90 lbs. as appropriate. We reserve the right to charge Oversize and/or Overweight fees on any order containing oversize and/or overweight products, even if it is not indicated in the catalog. For additional information visit us online at help.classicindustries.com or contact our customer service department during regular business hours.

FOB WAREHOUSE - "FREE ON-BOARD"

All Classic Industries® orders are shipped based on FOB Warehouse. Unless otherwise specified, Classic Industries® is not responsible for freight charges, shipping charges, or damages once the shipment leaves our warehouse.

Sales Errors/Ordering Errors

Classic Industries® is not responsible for customer errors or employee sales errors. Every effort is made to insure that the products you are ordering are accurate. Should an error occur, we will make every effort to resolve the issue. Replacement products will be shipped the same method as the original order whenever possible. Classic Industries® assumes no responsibility or liability for damages, fees, storage charges, or any other inconvenience that may be associated with sales errors or customer ordering errors.

Returns

Products may be returned for a full refund on the product, credit or exchange within 30 days of receipt. All returns are subject to a 25% restocking fee after 30 days. Should you need to return a part for refund, exchange or credit, please contact our customer service department for a return authorization number and instructions. Classic Industries® will not accept returned goods without prior authorization. Customer will pay freight on all return orders. Allow up to 3 weeks to process refund or credit.

Important: Gift certificates have no cash value and must be redeemed for merchandise only. Literature, CDs, videos, printed materials, stencil kits, stripes, electrical parts, gauges, wiring harnesses, switches, etc. are non-returnable. All special order products must be prepaid in full and are non-returnable. No returns on partial kits or sets. There is no guarantee on moving parts such as engines, transmissions, rear ends, steering gears, water pumps, distributors, wiper motors, etc. If any product is modified, altered, painted, installed or disassembled in any way without Classic Industries® expressed written permission, the item is non-returnable. Classic Industries® always recommends professional installation on all products. Any item which has been altered, painted, installed or deemed non-resalable by Classic Industries® will be returned to the customer at the customer's expense. Classic Industries® is not responsible or liable for labor fees associated with the installation, removal or installation, painting or repair of any product purchased regardless of the circumstances. Classic Industries® is not responsible for any damage or discoloration incurred in relation to chemical products being used including cleaners, waxes, polishes, paints, etc.

Product Index

A

A-Arm 349, 351
 A-Arm Bushing 349, 353
 A-Arm Seals 232
 A-Arm Shaft 352
AC Air Distributor Duct Vent 447
 AC Belt 451
AC Blower Motor Resistor 444
 AC Charge Tag 214
 AC Clutch Switch 449
AC Compressor 450
AC Compressor Bracket 451-452
 AC Compressor Circuit Button Switch 451
 AC Compressor Decal 214
AC Compressor Discharge Adapter 450
 AC Compressor Ground Wire 607
 AC Compressor Hose 451
 AC Compressor Manifold 450
 AC Compressor Mounting Stud 452
AC Compressor Seal 451
AC Condenser 453
 AC Condenser Insulator 453
AC Decal 214
 AC Delete Cover 455
 AC Evaporator Case Drain Hose 454
 AC Evaporator Case Drain Tube 454
 AC Evaporator Case Seal 454
 AC Evaporator Core 453
 AC Evaporator Decal 448
 AC Evaporator Seal 214
AC Evaporator Thermostatic Switch 454
 AC Expansion Valve 455
AC Flange Pad Seal Washer 451
 AC Harness Repair Set 449
 AC Heater Diverter Valve Link Connector 445
AC Hose 449, 454-455
 AC Hose Bracket 449
 AC Hose Clamp 449
AC Hose Grommet 455
 AC Liquid Bleed Valve Core 455
 AC Muffler Assembly 455
 AC Muffler Hook Up Tube 455
 AC O-Ring Set 455
 AC Power Feed Wire 606-607
AC Receiver Dryer 454
 AC Relay 444
 AC Retrofit Set, R12 to R134a 455
 AC Service Cap 449
 AC Switch Cap 445
 AC Switch, Glove Box Button 449
 AC Tinary Switch 449
 AC Vent Ball 446
AC Vent Diffuser 446
 AC/Heater Control Assembly 446
 AC/Heater Control Cable Set 445
 Accelerator Cable Bracket 172
 Accelerator Cable Retainer 172
Accelerator Pedal 174-175
 Accelerator Pedal Ball Stud 173
 Accelerator Pedal Bushing 172
 Accelerator Pedal Floor Bracket 173
 Accelerator Pedal Mounting Pin 173
 Accelerator Pedal Rod Support 172
 Accelerator Pedal Tension Spring 173
 Accelerator Pedal Trim Plate 173
 Accelerator Pump Squirters 541
 Accelerator Return Spring 173, 544
 Accelerator Rod 172, 544
 Accelerator Rod Grommet/Sleeve 173
 Accelerator Spring Bracket 172, 544
 Access Plug, Wheelhouse 325
 Accessories Parts Price List 185
 Accessory Connector Pack 623
 Accessory Drive Belt 430-431
Accessory Installation Manual 185
 Accessory Price List 221
 Accessory Sucker, Dealer 221
 Accessory Wire 618
 Actuator Rack, Ignition 137
 Actuator, Power Door Lock 618
Actuator, Vacuum 443
 Adapter, Air Cleaner 513
 Adapter, Alternator Conversion 522
 Adapter, Battery Post 509

Adapter, Bluetooth Receiver 128
 Adapter, Carburetor 542
 Adapter, Compressor Discharge 450
 Adapter, Filter AT 573
 Adapter, LS Motor Mount 457
 Adapter, Manual Steering Center Link 348
 Adapter, Oil Filter 465
 Adapter, Power Window Motor 616
 Adapter, Rear Seal 465
 Adapter, Seat Mounting 45
 Adapter, Shift Handle 593
 Adapter, Shift Knob 594
 Adapter, Speedometer 122
 Adapter, Steering Column Wiring 157, 150
 Adapter, Steering Wheel 147, 164-166
 Adapter, Tachometer 497
Adapter, Thermostatic Oil Cooler Line 470
 Adapter, Turn Signal Harness 153
Adapters, Dash Gauge 122
 Adhesive, Emblem 208-209
 Adhesive, Rear View Mirror 95
 Adhesive, Spray 13, 85
 Adhesive, Vinyl 63
 Adhesive, Weatherstrip 229
 Adjustable Electric Fan Thermostat 429
 Adjustable Footrest 175
 Adjusting Rod, Parking Brake 385
 Adjusting Sleeve, Tie Rod 349
 Advance Tube, Vacuum 498
 Aerosol Coating 196-198
 Air Bag Suspension System 363
Air Cleaner 510, 512, 514-516
Air Cleaner Adapter 513-514
Air Cleaner Baffle 510
Air Cleaner Crankcase Vent Filter 511
Air Cleaner Decal 211
Air Cleaner Emblem 210
Air Cleaner Filter 512-513
Air Cleaner Flame Arrestor 510
Air Cleaner Gasket 540
Air Cleaner Hose 511
Air Cleaner Lid 510
Air Cleaner Lid Seal 511
Air Cleaner Rubber Seal 515
Air Cleaner Shroud 512
Air Cleaner Spacer 513
Air Cleaner Wing Nut 511
 Air Conditioning Hose Crimper Tool 445
 Air Conditioning System 448
 Air Conditioning Wiring Harness 523
 Air Deflector, Heater 443
 Air Deflector, Upper Vent Center 447
 Air Filter Oil & Clean/Degreaser Kit 512-513
 Air Flow Control Cable 445
 Air Flow, Manual Inflation 528
 AIR Injection / Smog Extension Tube 555
 AIR Injection Diverter Valve Tee 555
 AIR Injection Hoses 555
 Air Intake Heat Shield 513
 Air Outlet Deflector 447
Air Suspension Set 357-358
 AIR Tube Eliminator Plug 555
 Alarm, False 190
Alternator 519-521
 Alternator, Manual Inflation 523
Alternator Bracket 523-525
Alternator Bracket Heater Hose Clamp 523
 Alternator Case Bolt 523
 Alternator Charge Wire 620
 Alternator Decal 523
Alternator Fan Blade 521
Alternator Generator Light Plug 522
Alternator High Output Wire 620
 Alternator Pigtail 522
 Alternator Pulley 521
 Alternator Pulley Nut 523
 Alternator Shutdown Relay Set 620
 Alternator Terminal Cover 523
 Aluminum Radiator 411-412
 Amplifier, Radio 129
 Ammeter, Transistor Ignition 505
Anchor Bolt, Seat Belt 50
Anchor Plate, Seat Belt 50
 Anchor Plate, Spare Tire Clamp 330
 Antenna Base 135
 Antenna Bezel 135

Antenna Bezel Nut 135
 Antenna Body 135
 Antenna Cap 135
 Antenna Grommet, Car Cover 135
 Antenna Ground Plate 135
 Antenna Ground Strap 133
Antenna Mounting Gasket 135
 Antenna Nut Tool 133
 Antenna Ornament 133
Antenna, Radio 134
 Anti-Squawk Brackets 367
 Anti-Squawk Insert, Fuel Tank 527
 Anti-Theft Device 180
Apparel 178-179
 Applicator Pads 194
 Applicator, Decal 217
 Arm, Windshield Wiper 295
 Armrest Backing Plate 75
Armrest Base 74-75
Armrest Base Molding 75
Armrest Base Screw 78
Armrest Brackets 74
Armrest Cover Moldings 78
Armrest Covers 62, 64, 67, 69
Armrest Ornament 74
Armrest Pad 74, 76-77
Armrest Pad Screws 78
Armrest Reflector 74
Armrest Reflector Bezel 74
Armrest Retainer Clip Nuts 78
Armrest/Piston Cover Panels 78
Ashtary Bracket 144
Ashtary Bumper 145
Ashtary Filter, Optic Lamp Hood 144
Ashtary Lamp Socket 145
Ashtary Slide Cover 144
Ashtary Vacuum Kit 145
Ashtary, Center Console 145
Ashtary, Dash 145
Ashtary, Quarter 145
Ashtary, Rear Insert 144
 Astro Ventilation Emblem 445
 AT Linkage Swivel Set 583
 AT Shift Cable 152
Audio 124-125
 Auto Dollies 191
Autobody Sealant 300
Automatic Shifter 580-581
 Automatic Transmission Cooler Line 575
 Automatic Transmission Filter 573
 Automatic Transmission Fluid 573
 Automatic Transmission Pan Bolt 574
 Automatic Transmission Vacuum Line 575
 Automotive Literature 186-188
 Autronic Eye Instruction Card 219
Auxiliary Fuse Block 619
Auxiliary Lamp Relay Set 621
Auxiliary Lamp, LED 609
Auxiliary Power Outlet 144
 Axle Bearing, Rear 369
Axle Filler Plug 368
 Axle Flange Gasket 370
 Axle Positraction Tag 218
 Axle Shaft Lock 368
 Axle Ventilator 368
 Axle, C-Clip 368
 Axle, Rear 368

B

B-Pillar Trim Board 70
 B-Pillar Vertical Glass Channel 229
 Back Board, Door Panel 70
 Back Glass Molding 245
Back Glass Molding Clips 253
Back Glass Molding Tool 255
Back Panel, Seat 41
 Back Window Glass 236
 Back-Up Housing Gasket 269
Back-Up Lamp Housing 269
Back-Up Lamp Nut 269
Back-Up Lamp Lens 267-270
 Back-Up Lamp Socket 275
 Back-Up Lamp Switch 139
Back-Up Lamp Switch Harness 606
 Back-Up Lamp Switch Mounting Set 139, 591

INDEX, POLICIES & ORDER FORMS

Product Index

Back-Up Switch Wire Clip	591	Bezel, Armrest Reflector	74	Bolt, Windshield Washer Jar	298
Backing Plate, Armrest	75	Bezel, Cigarette Lighter	143	Bolts, Alternator Mounting	523
Backing Plate, Disc Brake	391	Bezel, Dome Lamp	264	Bolts, Battery Cable	599
Backseat Speaker Panel	132	Bezel, Dash	136	Bolts, Battery Tray	591
Baffle, Lifter Valve	484	Bezel, Defogger	137	Bolts, Brake Shoe Anchor	397
Baffle, Oil Pan	463	Bezel, Dome Lamp	266	Bolts, Cylinder Heads	461
Balancer Bolt	477	Bezel, Grill Emblem	90	Bolts, Door Hinge	313
Ball Joint	349	Bezel, Rear Spoiler	126	Bolts, Exhaust Manifold	554
Ball Joint Boots	349	Bezel, Headlamp Dimmer Switch	138	Bolts, Fender to Cowl	292
Ball Stud, Accelerator Pedal	173	Bezel, Ignition Indicator	136	Bolts, Fender/Wheelhouse	292
Banked Relay Panel	621	Bezel, Parking Lamp	263	Bolts, Flexplate to Crankshaft	571
Barrel Nuts, Emblem	201	Bezel, Radio	126	Bolts, Fuel Pump	532
Base Molding, Armrest	75	Bezel, Rear Spoiler	126	Bolts, Fuel Tank Mounting Strap	527
Base, Air Cleaner	510	Bezel, Remote Mirror Inner	321	Bolts, Hood Hinge	288
Base, Antenna	135	Bezel, Shift Boot	171	Bolts, Ignition Coil Brackets	502
Base, Console	168	Bezel, Side Marker Lamp	265	Bolts, Intake Manifold	485
Base, Dome Lamp	96	Bezel, Taillamp	272	Bolts, Oil Pan	463, 466
Bathtub Clip Expansion Tool	255	Bezel, Wheelhouse	511	Bolts, Exhaust Manifold	518
Battery	596	Bezel, Windshield Wiper	140	Bolts, Tie Rod Sleeve	350
Battery Box	596-597	Bleeder Screw Dust Caps	381	Bolts, Timing Cover	474
Battery Cable Bolts	599	Bleeder Set, Hydraulic System	307	Bolts, Torque Converter	570
Battery Cable Clip	466, 599	Bleeder, Brake	395	Bolts, Valve Cover	495
Battery Cable Cloth Insulator	599	Block Side, Screw-In Pivot Ball	591	Bolts, Water Neck Mounting	439
Battery Cable Crimping Tool	599	Blower Motor Mounting Screws	444	Bolts/Fasteners/Clips	336-337
Battery Cable Retainer	599	Blower Motor Relay	444	Booster Mounting Brackets	379
Battery Cable Terminal	599	Blower Motor Relay Pigtail	444	Booster, Power Brake	378
Battery Cables	598-599	Blower Motor Resistor Pigtail	444	Boot and Ring, Floor Shifter	583
Battery Carrying Strap	600	Blower Motor Resistor Screw	444	Boot Snaps, Convertible Top	308
Battery Certificate	229	Blower Motor Switch	444	Boot, Brake Firewall Pushrod	379
Battery Charger	600	Blower Resistor, Heater	444	Boot, Clutch Fork	590
Battery Clamp Bolt	597	Bluetooth Interface	128	Boot, Clutch Rod Firewall	591
Battery Cover	601	Bluetooth Receiver Adapter	128	Boot, Firewall Brake/Clutch	177
Battery Cutout Switch	601	Body Alignment Shim	359	Boot, Parking Brake Cable	387
Battery Decal	601	Body Dent Removal Tools	334	Boot, Rear Alternator	523
Battery Disconnect Position Decal	601	Body Fasteners	291	Boot, Shifter	170, 583
Battery Heat Shield	597	Body Mount Bushing Set	359	Boot, Steering Column Joint	345
Battery Hold Down	601	Body Mount Shims	359	Boots, Ball Joint	349
Battery Insulation	600	Body Mount Support	301	Bottle, Radiator Overflow	405
Battery Jump Starter	600	Body Mount	359	Bow Parts, Convertible Top	315
Battery Mat	600	Body Side Molding	242-244	Brace, AC Mounting	452
Battery Mount	596	Body Tools	334	Brace, Alternator	524
Battery Post Adapter	599	Bodywork and Rust Repair Manual	188	Brace, Bumper	282-283
Battery Post Cleaning Tools	601	Bolt Center Measuring Template, Wheel	403	Brace, Cowl	301
Battery Post Washer	599	Bolt Cover, Seat Belt	503	Brace, Floor	302
Battery Quick-Disconnect	601	Bolt Lock Set	323	Brace, Fuel Tank Mounting	527
Battery Relocation Set	596	Bolt Mounting, Fender Skirt	293	Brace, Generator	524
Battery Side Terminal Adapter	599	Bolt Pinch, Throttle Lever Arm	172	Brace, Radiator Support	285
Battery Side Terminal Wrench	601	Bolt Ring & Pinion Installation Set	370	Brace, Rear Bumper	325
Battery Surge Protector	600	Bolt Set, Convertible Top	303	Brace, Rear Wheel Well	323
Battery Terminal Protector Boots	599	Bolt Set, Differential Cover	371	Brace, Rear Motor	518
Battery Terminal Spreader/Cleaner	601	Bolt Set, Engine	461	Brace, Tail Panel	332
Battery Tray	597	Bolt Set, Fan Spacer	422	Brace, Wheelhouse	323
Battery Tray Bolts	597	Bolt Set, Thermostat Housing	439	Bracket Set, Throttle	578
Battery Tray Clamp	597	Bolt Washer, Door Striker Bolt	312	Bracket, AC Compressor	451-452
Bearing Kit, Wheel	394	Bolt, Alternator Case	394	Bracket, AC Hose	449
Bearing Packer	370	Bolt, Automatic Transmission Pan	574	Bracket, Accelerator Cable	172
Bearing Race & Seal Driver Tool	394	Bolt, Balancer	477	Bracket, Accelerator Pedal Floor	173
Bearing Race, 4-Speed Drive Gear	585	Bolt, Battery Clamp	597	Bracket, Accelerator Spring	173, 544
Bearing, Clutch Throwout	589	Bolt, Brake Caliper Hose	389	Bracket, Alternator	524-525
Bearing, Differential	371	Bolt, Brake Hose Banjo	384	Bracket, Ashtray	591
Bearing, Driveshaft Center Support	367	Bolt, Brake Line	384	Bracket, Brake Caliper	390
Bearing, Hub Roller	394	Bolt, Control Arm	386	Bracket, Bumper Guard	282
Bearing, Horn Steering Shaft	149	Bolt, Convertible Top Pivot	309	Bracket, Carburetor Mount Linkage	544
Bearing, Rear Axle	369	Bolt, Coolant Crossover Pipe	417	Bracket, Carburetor Return Spring	544
Bearing, Roller Pilot	586	Bolt, Crankshaft Pulley	476	Bracket, Clutch Bellcrank Frame	591
Bed Molding Clip Set	250	Bolt, Cross Shaft	352	Bracket, Console Mounting	168
Bellcrank Pivot Ball, Frame Side	591	Bolt, Disc Brake Caliper Mounting	390	Bracket, Convertible Cylinder to Floor	307
Bellcrank, Clutch	591	Bolt, Fan Clutch to Water Pump	422	Bracket, Convertible Top Switch Mounting	140
Bellhousing	586	Bolt, Flywheel to Crankshaft	586	Bracket, Cruise Control Cable	543
Bellhousing Bolt, Transmission	586	Bolt, Header	552	Bracket, Electric Fan	423
Bellhousing Duct Shield	586	Bolt, Hood Pilot	287	Bracket, Engine Frame	459
Bellhousing Dust Shield	586	Bolt, Horn Mounting	167	Bracket, Engine Pul	456
Belt Conversion, Serpentine	475	Bolt, Intake Manifold Stud	522	Bracket, Fender to Valance	292
Belt, AC	451	Bolt, License Plate	182	Bracket, Front Under Seat Mounting	301
Belt, Alternator/Generator	523	Bolt, Lower Rear Shock	363	Bracket, Fuel Filter	521
Belt, Power Steering	344	Bolt, Motor, Alternator	459	Bracket, Generator Mounting	521
Belt, Serpentine	430-431	Bolt, Oil Pump Bypass Valve	464	Bracket, Grill Screen	279
Belt, Smog Pump	555	Bolt, Pressure Plate to Flywheel	586	Bracket, Headlight Bezel	260
Belt, V	430-431	Bolt, Seat Belt Anchor	50	Bracket, Heater Control Panel	446
Bench Seat Console	171	Bolt, Steering Box Mounting	347	Bracket, Heater Hose Conversion	420
Bench Seat Extenders	38	Bolt, Throttle Lever Arm	172	Bracket, Ignition Conversion	591
Bench Seat Wire Cable	38	Bolt, Transmission Bellhousing	586	Bracket, Ignition Coil	502
Bezel Clip, Headlamp	460	Bolt, Trunk Latch	329	Bracket, Kickdown Cable Mounting	579
Bezel Nut, Ignition Switch	136	Bolt, Turn Signal Hold Down	153	Bracket, License Plate	275, 284
Bezel, Antenna	135	Bolt, Water Outlet	439	Bracket, Manual Choke Cable Mount	545
		Bolt, Water Pump	436	Bracket, Morse Cable	543

Product Index

Bracket, Muffler Support	557
Bracket, Oil Cooler	470
Bracket, Oil Pressure Wiring	464
Bracket, Outer Mirror	321
Bracket, Pedal Drive-By-Wire	174
Bracket, Power Steering Slave Cylinder	347
Bracket, Proportioning Valve	381
Bracket, Radiator To Core Support	285
Bracket, Rear View Mirror	95
Bracket, Seat Track Wire Release	39
Bracket, Shift Cable	583
Bracket, Shifter Linkage	582
Bracket, Shifter Support	592
Bracket, Smog Pump	555
Bracket, Sun Visor	93
Bracket, Sway Bar	356
Bracket, Throttle Cable	546-547
Bracket, Throttle Valve Cable	579
Bracket, Transmission Cable	543
Bracket, Transmission Control Cable	583
Bracket, Transmission Shifter	582
Bracket, Under Dash Courtesy Light	97
Bracket, Windshield Washer Jar	298
Brackets, Anti-Squat	367
Brackets, Armrest	74
Brackets, Bumper	282-283
Brackets, Drop Spindle Disk Brake	393
Brackets, Fender Support	292
Brackets, Glove Box Door Stop	141
Brackets, Grill	279
Brackets, Grill Support	285
Brackets, Power Steering Pump	340
Brackets, Rear Valve Support	352
Brackets, Seat Mounting	39, 43
Braided Line Clamps	383
Brake Adjusting Hole Cover	392
Brake Adjustment Tool	395
Brake and Parts Cleaner	395
Brake Backing Plate, Disc	391
Brake Bleeder Screws	381
Brake Bleeder Tool	395
Brake Bleeder Valve	381
Brake Booster Repair Set	379
Brake Booster/Master Cylinder	374
Brake Cable Pliers	387
Brake Cable, Park	386-387
Brake Caliper	389
Brake Caliper Bracket	390
Brake Caliper Hose Bolt	389
Brake Caliper Rebuild Set	388
Brake Caliper/Drum Paint System	388
Brake Combination Valve	380
Brake Cylinder Hone Tool	395
Brake Distribution Block	376
Brake Drum	391
Brake Drum Anti-Vibration Spring	391
Brake Firewall Pushrod Boot	379
Brake Flex Hose	384
Brake Fluid	395
Brake Hardware Set	392
Brake Hose Banjo Bolt	384
Brake Hose Clip	383
Brake Hose Copper Washer	383
Brake Lamp Relay Set	621
Brake Lamp Switch	139
Brake Lamp Switch Retaining Clip	383
Brake Line Clips	383
Brake Line Fitting	383
Brake Line Set	382
Brake Line Shield	383
Brake Manual	189
Brake Master Cylinder	375
Brake Master Cylinder Hardware	376
Brake Master Cylinder Rebuild Set	376
Brake Master Cylinder/Booster	374
Brake Metering Valve	380
Brake Pad Spreader	395
Brake Pads	390-391
Brake Pedal Bushing	177
Brake Pedal Clevis	177
Brake Pedal Pin	173, 176
Brake Pedal Return Spring	176
Brake Pedal Rod Extensions	177
Brake Pedal Shaft Pin	177
Brake Pedal Trim Plate	176
Brake Rotor, Disc	388
Brake Rotor/Drum Nut	388
Brake Shoe Anchor Bolts	391
Brake Shoe Spring Plate	391
Brake Shoe Hold Down Set	391
Brake Shoe Retaining Pin	392
Brake Shoes	391
Brake Spindles	393
Brake Springs	395
Brake Spring Removal Tool	395
Brake/Clutch Pedal Clip	177
Brake/Clutch Pedal Pad	176
Brake/Clutch Pedal Set	174
Brecker Cap	492
Breather, Valve Cover	492
Brodie Knob, Steering Wheel	181
Brushes, Starter Motor	518
Brush Set End Cap	37
Bucket Seat Molding	37
Bucket Seat Trim	37
Bucket Seats	42-45
Bucket, Headlamp Mounting	260
Buckle Cover, Seat Belt	47
Build Sheet, Factory	221
Bulb and Socket, Gauge	123
Bulb Covers, Light	123
Bulb LED, Gauge	123
Bulb, Console Transmission Indicator	170
Bulb, Dome Lamp	96
Bulb, Headlamp Halogen	276
Bulb, Tachometer	123
Bulb, Trunk Lamp	329
Bulbs, Lamp	276-277
Bumper Brace	282
Bumper Bracket, Rear	225
Bumper Brackets	282-283
Bumper Cover Retainer	280
Bumper Cover, Rear	280
Bumper Filler	281
Bumper Guard	282
Bumper Guard Bracket	282
Bumper Mounting Hardware	283
Bumper Reinforcement, Front	282
Bumper Set, Rubber	233
Bumper Sticker	217
Bumper Stop, Upper Control Arm	233
Bumper Support Bracket Brace	283
Bumper, Ashtray	145
Bumper, Center Console Rubber	168
Bumper, Clutch Pedal Return	177
Bumper, Chrome	482
Bumper, Door Handle	315
Bumper, Door Pull Handle	85
Bumper, Front	280
Bumper, Fuel Filler Door	529
Bumper, Glove Box Door Arm	142
Bumper, Hood	233
Bumper, Rear	280
Bumper, Rear Compartment	232-324
Bumper, Spare Tire Cover	330
Bumper, Window	238
Bumpers, Door	226
Bumpers, Glove Box Door	142
Bumpers, Seat Back	40
Bumpers, Tailgate	231
Bushing & Tip Set, Sun Visor	97
Bushing Installation/Removal Tool	352
Bushing Set, Convertible Top Frame	309
Bushing Set, Polyurethane	353
Bushing Set, Rear Suspension	365
Bushing Set, Strut Rod	352
Bushing, Accelerator Pedal	172
Bushing, Brake Pedal	177
Bushing, Carburetor & Throttle Arm Linkage	544
Bushing, Clutch Bellcrank	591
Bushing, Clutch Pedal	177
Bushing, Clutch Pedal Pushrod	309
Bushing, Convertible Top Pivot	309
Bushing, Disc Brake Caliper Sleeve	390
Bushing, Door Hinge	313
Bushing, Guide Pin	306
Bushing, Ignition Transmission Pilot	86
Bushing, Mirror Mount	95
Bushing, Panhard Bar	366
Bushing, Rear Trailing Arm	365
Bushing, Shift Linkage Bellcrank	591
Bushing, Sway Bar	356

Bushings, Body Mount	359
Bushings, Control Arm	349, 353
Bushings, Radiator Support	285
Bushings, Shift Lever	593
Bushings, Strut Arm	592
Bushings, Sway Bar	356
Bushings, Track Bar Rear	366
Bushing, Wiper Transmission	297
Button, Door Panel/Upholstery	72
Button, Horn	156-157
Button, Seat Back Release	37
Button, Seat Upholstery	37
Bypass Valve Bolt, Oil Pump	464
Bypass Valve, Oil Filter	464

C

C-Clip Axle	368
C-Clip Eliminators	368
Cable Bolts, Battery	599
Cable Clip, Kick Panel	51
Cable Set, AC/Heater Control	445
Cable Set, EZ-Slider	445
Cable Shift Control Set	147
Cable Ties, Steel	566
Cable, Air Flow Control	445
Cable, Antenna	135
Cable, Antenna Lead coaxial	135
Cable, Battery Cloth Insulator	599
Cable, Bench Seat Adjustment	40
Cable, Convertible Top Hold Down	306
Cable, Hood Release	287
Cable, Kickdown	386
Cable, Park Brake	386-387
Cable, Shifter	583
Cable, Speed Warning Control	111
Cable, Speedometer	110
Cable, Throttle	546
Cable, Throttle Valve Control	578
Cables, Battery	598-599
Cables, Turn Signal	152
Caliper Bracket, Brake	390
Caliper Rebuild Set	389
Caliper, Brake	389
Cam, Tailgate Window Regulator	238
Cam, Turn Signal Cancelling	153
Cams & Valvetrains Manual	189
Camshaft Gear Drive	476
Camshaft Installation Tool	453
Camshafis	480
Canister, Vacuum	449
Canvas Top Cleaner	193
Cap, AC Switch	449
Cap, C Service	445
Cap, Breather	492
Cap, Distributor	500-501
Cap, Horn	158
Cap, Interior Center Pillar	97
Cap, Master Cylinder	373
Cap, Oil	493
Cap, Oil Breather	492-493
Cap, Power Steering	339
Cap, Power Steering Control Valve	345
Cap, Radiator	414
Cap, Radiator Overflow Jar	415
Cap, Seat Pivot	542
Cap, Vacuum	542
Cap, Valve Stem	403
Cap, Wheel Bearing	394
Cap, Windshield Washer Jar	298
Cap, Windshield Wiper Arm	294
Cap/Hat	178, 180
Car Care Products	192-194
Car Cover	4-7
Car Cover Antenna Grommet	5
Car Cover, Glove Box	5
Car Cover Lock and Cable Set	5
Car Cover Storage Bag	5
Car Magnet	181
Carburetor Bypass Regulator	536
Carburetor	538-539
Carburetor & Throttle Arm Linkage Bushing	544
Carburetor Accelerator Pump Squirters	541
Carburetor Adapter	542
Carburetor Baffle Plate	543
Carburetor Ball Stud Set	544

Product Index

Carburetor Cable Brackets	547	Clamp, Battery Tray	597	Clutch Adjustment Rod	591
Carburetor Calibration Set	541	Clamp, Car Cover	547	Clutch Bellcrank	591
Carburetor Choke	545	Clamp, Distributor Hold Down	498	Clutch Bellcrank Felt Seal	591
Carburetor Cover	513, 543	Clamp, Exhaust	557	Clutch Bellcrank Frame Bracket	591
Carburetor Float Bowl Screw	543	Clamp, Heater Core	442	Clutch Bellcrank Pivot Bushing	591
Carburetor Fuel Line	535	Clamp, Muffler	557	Clutch Bellcrank Pivot Stud Lock	591
Carburetor Gasket	540	Clamp, PCV Valve	491	Clutch Disc	588-589
Carburetor Heat Shield	542	Clamp, Pushrod Steering Hose	343	Clutch Disc Reservoir	589
Carburetor Installation Set	540	Clamp, Smog Pump Hose	555	Clutch Fork	590
Carburetor Insulator	542	Clamps, Braided Line	383	Clutch Fork Boot	590
Carburetor Insulator Spacer	542	Clamps, Fuel Hose	533	Clutch Fork Mounting Stud	590
Carburetor Jet	541	Clamps, Hose	420	Clutch Fork Pushrod	590
Carburetor Linkage Plate	543	Clamps, Lines	533	Clutch Fork Rod	590
Carburetor Linkage Set	544	Clamps, Water Pump Bypass Hose	437	Clutch Fork Spring	590
Carburetor Main Body	538	Cleaner, Canvas Top	193	Clutch Linkage Retainer Clip	591
Carburetor Manuals	187	Cleaner, Upholstery	193	Clutch Master/Slave Cylinder	589
Carburetor Mount Linkage Bracket	544	Cleaner, Vinyl Top	193	Clutch Pedal Bushing	177
Carburetor Needle and Seat	543	Clamp, Wheel & Tire	194	Clutch Pedal Bushing	173, 176
Carburetor Power Valve	541	Clearance Lamp, LED	265	Clutch Pedal Pushrod Bushing	591
Carburetor Rebuild Set	540	Clevis, Brake Pedal	177	Clutch Pedal Return Bumper	177
Carburetor Repair Set	541	Clip Molding, Inner Dash	105	Clutch Pedal Shaft Ball Stud	177
Carburetor Return Spring	544	Clip Set, Bed Molding	250	Clutch Pedal Trim Plate	176
Carburetor Return Spring Bracket	544	Clip Set, Rear Fin Molding	250	Clutch Reservoir, Remote	590
Carburetor Rod Clip	543	Clip Set, Rocker Panel Molding	250	Clutch Rod	590
Carburetor Secondary Spring	544	Clip Set, Trunk Molding	250	Clutch Rod Firewall Boot	591
Carburetor Spacer	543	Clip, Back-Up Switch Wire	591	Clutch Rod Swivel	591
Carburetor Stud	544	Clip, Battery Cable	599	Clutch Rod to Fork Swivel	591
Carburetor Throttle Stud	547	Clip, Brake Hose	383	Clutch Throw Bearing	589
Carburetor Wedge Plate	543	Clip, Brake Lamp Switch Retaining	139	Clutch, Fan	422
Cargo Area Covers	330	Clip, Brake/Clutch Pedal	177	Clutch/Thyruwheel Housing Cover	587
Carnauba Wax	192	Clip, Carburetor Rod	543	Coat Hanger Hook	93
Carpet	8-9	Clip, Clutch Linkage Retainer	591	Coil Cover	502-503
Carpet Dye	197	Clip, Console Seat Belt	507	Coil Pack Shield	503
Carpet Jute Padding	10	Clip, Convertible Top Binding End	205	Coil Spring Decal	218
Carpet Underlay	13	Clip, Convertible Top Hose	50	Coil Spring Isolators	361
Carpet, Console	168	Clip, Convertible Well Molding	250	Coil Spring Retainers	360
Carpet, Door Panel	71	Clip, Disc Brake Pad Retainer	390	Coil Spring Spacer	361
Carpet, Kick Panel	51	Clip, Distributor Cap Retaining	85	Coil Spring, Door Panel	85
Carpet, Trunk	330	Clip, Door Trim Bezel	85	Coil Spring, Lower Leaf	610
Case, Hook & Spring, Glove Box	142	Clip, Door Lock Rod Retaining	85, 315	Coil to Distributor Lead Wire	610
Cast Iron Manifold Dressing	553	Clip, Fuel Line	283	Coil Wires	503
Catalytic Converter Decal	218	Clip, Headlamp Bezel	360	Coil, Ignition	501-503
Catch Tank, Oil	470	Clip, Headliner Bow	320	Collover Set	357, 361
Catch, Trunk Lid	329	Clip, Headliner Bow Locator	92	Coin Holder, Console	170
Center Cap, Steering Wheel	165	Clip, Heater Control Cable	443	Color, Radio	127
Center Cap, Wheel	400, 403, 405-406	Clip, Heater Control Lens	446	Column Gearshift Lever	151
Center Console	171	Clip, Heater Core Mounting	442	Column Lock Plate Retainer	149
Center Console Ashtray	145	Clip, Kickdown Rod	579	Column Shift Cable Linkage	582
Center Console Rubber Bumper	168	Clip, License Plate Panel	284	Column Shift Indicator Lens	107
Center Dash AC Diffuser	447	Clip, Oil Line Lens	169	Column Shift Lens Housing	107
Center Drag Link	349	Clip, Oil Pan Battery Cable	466	Column Shift Lever Knob	151
Center Floor Brace	302	Clip, PCV Valve	491	Column, Tilt Steering	146
Center Link Repair Set, Manual Steering	348	Clip, Quarter Panel Molding	247	Combination Valve, Brake	380
Center Support Bearing	367	Clip, Radiator Fan Shroud	417	Compass Gauge	109
Certificate, Warranty	220	Clip, Rear Cove Molding	249	Compass Instruction Decal	219
Certification Decal, Vehicle	418	Clip, Shift Rod Retainer	593	Compass Lamp Wiring Harness	609
Chain, Timing	273	Clip, Speedometer Cable	110-111	Compression Fittings, Transmission	577
Channel Liner, Window	230	Clip, Speedometer Drive Gear	111	Compressor Block Fittings	451
Channel, Lower Window	237	Clip, Tailgate Molding	250	Compressor Tool, Valve Spring	456
Channel, Trunk Side Weatherstrip	230	Clip, Tailgate Remote Control	329	Compressor, AC	450
Charcoal Canister, Fuel Vapor	533	Clip, Throttle Valve Control	579	Condenser, AC	453
Chassis Wiring Harness	611-613	Clip, Trunk Wire Gutter	324	Condenser, Ignition	501
Choke Valve, Headlamp	259	Clip, Windshield Molding	252	Connector, AC Heater Diverter Valve Link	445
Chisel Tool, Steam Buster	334	Clips, Back Glass Molding	253	Connector, Knock Sensor	610
Choke Cable, Manual	545	Clips, Brake/Clutch Pedal	383	Console, Shift Lens	168, 171
Choke Coil, Thermostatic	545	Clips, Door Latch	85	Console AT Indicator Bulb	170
Choke Heat Riser Tube	545	Clips, Door Latch Rod	315	Console Base	168
Choke Rod	545	Clips, Door Panel	72-73	Console Carpet	168
Choke Set, Carburetor	545	Clips, Door Spear Molding	243	Console Case Lock	317
Choke Shutdown Relay	545	Clips, Door Skirt	293	Console Clock	170
Choke Thermostat Cover	545	Clips, Fender Splash Shield	232	Console Clock Lens	170
Choke Thermostat Mounting Screw	545	Clips, Fuel Line	535-536	Console Coin Holder	170
Chrome Instrument Folder	219	Clips, Fuel Line	535-536	Console Door	170
Chrome Lens Screws	262	Clips, Fuel Line	535-536	Console Door Lamp Harness & Switch	609
Cigarette Lighter	143	Clips, Molding	251, 254	Console Emblem	609
Cigarette Lighter Bezel	143	Clips, Quarter Window Molding	253	Console Extension Wiring Harness	609
Cigarette Lighter Heating Element	143	Clips, Retaining	283	Console Gauge Oil Line	169
Cigarette Lighter Housing	144	Clips, Sail Panel	92	Console Gearshift Spring	582
Cigarette Lighter Tag	219	Clips, Tail Fin Corner Molding	251	Console Inserts	168
Cigarette Lighter Wiring Harness	604	Clips/Fasteners/Bolts	336-337	Console Lamp Housing	169
Circuit Add-On Indicator	619	Clips, Rear Door Panel	248	Console Lens, Rear	169
Circuit Board, LED Taillamp	619	Clips, Lens	106-107	Console Lock	170
Circuit Breaker to Seat Wiring Harness	608	Clock Wiring Harness	609	Console Mounting Bracket	168
Circuit Breaker, Body Wiring	618	Clock, Console	170	Console Seat Belt Clip	50
Clamp Ring Hose, Fuel	533	Clock, Dash	109	Console Shift Lens	169
Clamp, AC Hose	449	Clock, Digital	413	Console Shift Lens Decal	169

Product Index

Console Shift Plate.....	169
Console Shift Plate Emblem.....	170
Console Shift Switch Plate.....	169
Console Wiring Harness.....	609
Console, Bench Seat	171
Console, Floor.....	171
Contact, Horn.....	378
Continental Set Emblem.....	328
Continental Sets.....	328
Control Arm	349, 351, 364
Control Arm Bolt Set.....	366
Control Arm Bumper	352-353
Control Arm Bushings.....	349, 353
Control Arm Plate Set, Lower.....	351
Control Arm Shaft.....	352
Control Cable, Air Flow.....	445
Control Lever Pivot Pin.....	151
Control Set, Cable Straps.....	345
Control Valve Kit, Power Steering	349
Controller, Electric Fan	427
Conversion Box, Power Steering.....	347
Conversion Set, LS Engine.....	457
Conversion Set, Power Door Lock.....	614
Conversion Set, Power Window.....	617
Conversion Set, Shifter.....	572
Conversion Set, STV Valve.....	455
Conversion, Disc Brake Front.....	372-373
Conversion, Electric Kickdown.....	578
Conversion, Front Disc Brake.....	373
Conversion, Self-Adjusting Drum Brake.....	392
Converter Cover Pan Screw.....	572
Converter, Torque	570
Convertible Cowf Foot Brace.....	301
Convertible Rear Tack Strip Bow.....	305
Convertible Top Binding End Clip.....	305
Convertible Top Bolt Set.....	309
Convertible Top Boot.....	308
Convertible Top Boot Snaps	308
Convertible Top Boot Storage Bag.....	308
Convertible Top Boot Well Retainer.....	308
Convertible Top Bow Parts.....	305
Convertible Top Cylinder.....	307
Convertible Top Cylinder to Floor Bracket	307
Convertible Top Decal.....	218
Convertible Top Defogger Bezel.....	136
Convertible Top Drive Cable.....	307
Convertible Top Drive Gear.....	307
Convertible Top Frame Bushing Set.....	309
Convertible Top Header Bow.....	305
Convertible Top Header Bow Guide Pin.....	306
Convertible Top Header Bow Windlace	305
Convertible Top Header Seal.....	225
Convertible Top Header Strip.....	305
Convertible Top Hold Down Cable.....	306
Convertible Top Hose Clip.....	307
Convertible Top Hydraulic Hose Set.....	307
Convertible Top Latch	306
Convertible Top Latch Handle.....	306
Convertible Top Latch Hook Knuckle.....	306
Convertible Top Latch Knuckle Hook.....	306
Convertible Top Latch Screw.....	306
Convertible Top Manual.....	186
Convertible Top Motor Grommet.....	307
Convertible Top Motor Pump.....	307
Convertible Top Motor Shield.....	307
Convertible Top Pad.....	308
Convertible Top Pinch Rail Pad.....	306
Convertible Top Pivot Bolt.....	309
Convertible Top Pivot Bolt.....	309
Convertible Top Pivot Bushing.....	309
Convertible Top Pinch Bolt Grommet.....	307
Convertible Top Rain Gutter Wire.....	306
Convertible Top Rear Bow	306
Convertible Top Rear Drain Tube.....	306
Convertible Top Rear Glass Window Arm.....	306
Convertible Top Reinforcement Rails	303
Convertible Top Roll-Over Protection.....	305
Convertible Top Striker Plate	306
Convertible Top Switch	140
Convertible Top Switch Knob.....	140
Convertible Top Switch Mounting Bracket.....	140
Convertible Top Tack Strip.....	305
Convertible Top Tack Strip Bow Ends	305
Convertible Top Weatherstrip.....	225
Convertible Top Wiring Harness.....	608
Convertible Top, Window.....	304-305
Convertible Tops.....	304-305

Convertible Weatherstrip Set.....	222
Convertible Well Liner.....	308
Convertible Well Molding Clip.....	269
Coolant Additive.....	417
Coolant Crossover Pipe.....	417
Coolant Crossover Pipe Bolt.....	417
Coolant Decal, Engine.....	214
Coolant Electric Fan.....	417
Coolant Hose Adapter	417
Coolant Reservoir Tank	415
Coolant Temperature Sending Unit.....	435
Coolant Temperature Sensor.....	434
Cooler, Fan, Steering.....	347
Cooling Fan Blades, Radiator	421
Cooling Fan Shutdown.....	428
Cooling Fan Spacer.....	422
Cooling Fan, Electric	423-426
Cooling Fan, Transmission.....	577
Cooling System Zinc Anode.....	427
Core Support Connector.....	623
Core Support, Radiator.....	285
Corner Lamp Bezel.....	264
Corner Lamp Lens.....	264
Corrosion Barrier Coating.....	195
Counter Stool.....	182
Countershaft Gear Bearing Washer.....	585
Coupler Hardware, Steering.....	345
Coupler, Steering.....	345
Courtesy Lamp Wiring Harness.....	97, 609
Cove Molding.....	248-249
Cover Bail, Master Cylinder.....	377
Cover Panels, Armrest/Piston	78
Cover Slide, Ashtray.....	144
Cover, Brake Adjuster Hole.....	292
Cover, Choke Throttle.....	545
Cover, Coil.....	502
Cover, Dash Pad	101-103
Cover, Differential	571
Cover, Door Switch.....	138
Cover, Firewall Relay.....	618
Cover, Harmonic Balancer	457
Cover, Headlamp.....	299
Cover, Heli Coil.....	303
Cover, Ignition Coil.....	490
Cover, Lock Plate	140
Cover, Master Cylinder	377
Cover, Oil Pump.....	464
Cover, Pedal	176
Cover, Quarter Stick Shifter.....	581
Cover, Rear Radio Speaker.....	128
Cover, Seat Belt Buckle.....	407
Cover, Seat Headrest.....	40-41
Cover, Shifter Tunnel	300
Cover, Spare Tire.....	331
Cover, Timing.....	472-474
Cover, Torque Converter	572
Cover, Vacuum Advance.....	499
Cover, Valve	486-489
Cover, Vent Window	235
Cover, Wheel.....	402
Covers, Armrest	62, 64, 67, 69
Covers, Cargo Area.....	330
Covers, Pedal	173
Covers, Piston	62, 64, 67, 69
Cowl Bracket.....	294
Cowl Hood Number Emblem.....	209
Cowl Panel.....	294
Cowl Plug.....	294
Cowl Side Drain Gutter.....	224
Cowl Tag Rivets.....	294
Cowl Vent Panel.....	294
Crankcase Evacuation System.....	491
Crankcase Vent Filter.....	511
Crankcase Vent Tube.....	511
Crankcase Vent Tube Mounting Set.....	511
Crankcase Ventilation Tag.....	219
Crankshaft Pulley	475-476
Crankshaft Pulley Bolt.....	476
Crankshaft Turning Socket.....	456
Cross Rail, Trunk Floor.....	325
Cross Rail Bolt.....	352
Crossmember, Transmission	569
Cruise Control Cable Bracket	543
Cruise Control Instruction Card.....	220
Cruise Control Unit.....	152
Cruise Control Wiring Harness.....	610

Cruised Sleeve, Pinion Gear.....	370
Cupped Fender Washer	292
Curb Feet.....	462
Custom Trim Plates	128
Cylinder Head Bolts.....	461
Cylinder Rebuild Set, Wheel.....	392
Cylinder Ring, Tailgate Handle.....	318
Cylinder, Convertible Top.....	307

D

Damper Pad, Insulation.....	15
Damper, Harmonic.....	477
Dash AC Vent Housing	447
Dash Ashtray.....	145
Dash Bezel.....	136
Dash Bezel Set.....	136
Dash Clock/Reset Knob.....	109
Dash Emblem.....	102
Dash Gauge Adapters	124
Dash Gauges	112-120
Dash Grab Handle.....	103
Dash Instrument Cluster Wiring Harness.....	604
Dash Louver.....	447
Dash Molding Clip, Inner	105
Dash Pad.....	100-101
Dash Pad Cover	101-103
Dash Panel Fascia	102
Dash Panel Insert.....	104
Dash Panel Lettering Decal.....	136
Dash Panel Light Dimmer.....	112
Dash Vent Ball Retainer	446
Deadener, Sound.....	210
Dealer Accessory Sticker.....	117
Decal Applicator.....	217
Decal, AC	214
Decal, AC Compressor.....	214
Decal, AC Evaporator.....	214
Decal, Air Cleaner.....	213
Decal, Alternator.....	214
Decal, Battery.....	211
Decal, Battery Disconnect Position.....	601
Decal, Catalytic Converter.....	218
Decal, Coil Spring.....	218
Decal, Compass Instruction.....	169
Decal, Console Shift Lens.....	169
Decal, Convertible Top.....	218
Decal, Dash Panel Lettering.....	136
Decal, Dick Harell.....	217
Decal, Die.....	218
Decal, Diesel Glow Plug.....	211
Decal, Door Jamb.....	218
Decal, Emission.....	215
Decal, Engine Coolant.....	214
Decal, Fan.....	214
Decal, Fuel.....	217
Decal, Gas Cap.....	218
Decal, Ignition Amplifier.....	213
Decal, Ignition Coil.....	213
Decal, Interior.....	217
Decal, Jacking Instruction.....	217
Decal, Mirror.....	215
Decal, Oil Change.....	213
Decal, Oil Filler Cap.....	213
Decal, Oil Filter.....	213
Decal, Posture.....	218
Decal, Push Start.....	218
Decal, Service.....	218, 221
Decal, Shock	218
Decal, Tire.....	216
Decal, Tire Pressure.....	212
Decal, Valve Cover.....	212
Decal, Vehicle Certification.....	212
Decal, Washer Bottle.....	298
Decal, Wheel Lock Instruction.....	220
Decal, Window.....	216
Decal, Window Police Package.....	218
Decal, Windshield Washer.....	213
Decal, Windshield Washer Bottle.....	213
Decal, Windshield Washer Filler Cap.....	213
Decal, Windshield Washer Lid.....	213
Decals, Wheel Cover.....	403
Deflector, Air Outlet.....	447
Deflector, Exhaust.....	156
Defogger Bezel	365

Product Index

Defogger Switch	140	Door Handle Push Button Set	314	Drain Plug, Oil Pan	465
Defroster Duct Hose	445	Door Handle Removal Tool	314	Drain Plug, Transmission Case	583
Degree Wheel Tool	456	Door Lock Rod Clip	85, 317	Drain Plug, Transmission Pan	573
Delete Cover, AC	455	Door Handle, Outer	314, 615	Drink Koozies	181
Delete Plate, Radio	104	Door Hanger Tool	334	Drip Rail, Roof	303
Detailing Scraper	211	Door Hinge	313	Drive Cable, Convertible Top	307
Diagrams, Writing	186	Door Hinge Adjuster Tool	334	Drive Gear Bearing Ring, 4-Speed	585
Diaphragm, Master Cylinder	377	Door Hinge Bolt	313	Drive Gear, Convertible Top	307
Diaphragm, Vacuum Secondary	542	Door Hinge Bushing	313	Drive Shaft, Oil Pump	463
Dick Harrell Decal	217	Door Hinge Fill-U-Seals	230	Drive-by-Wire Pedal Pad	175
Dielectric Grease	509	Door Hinge Pin	313	Driveshaft Center Support Bearing	367
Diesel Decal	211	Door Hinge Pin Popper	334	Driveshaft Joint Strap and Bolt	367
Diesel Glow Plug Decal	219	Door Hinge Striker Set	313, 317	Driveshaft Safety Loop	367
Differential Bearing Set	371	Door Hinge Spring	313	Drum Brake Adjuster	391
Differential Cover	371	Door J Weatherstrip	226	Drum Brake Adjusting Screw	391
Differential Cover Bolt Set	371	Door Jamb Decal	218	Drum Brake Brake Cylinder	392
Differential Spider Gear Spanner Nut	370	Door Jamb Rubber Stopper	226	Drum Lever, Parking Brake	395
Differential, 3rd Member	369	Door Jamb Switch	317	Drum, Brake Cover	381
Differential, Locking	370	Door Jamb Switch Seal	140	Dual Battery Control System	620
Differentials Manual	187	Door Jamb Vent	311	Dual Fuel Fuel Line	542
Digital Clock	113	Door Jamb Windlace	226	Duct Hose, Defroster	445
Digital Gauge Conversion	113	Door Latch Assembly	315	Duct, Hood	290
Digital Multimeter	456	Door Latch Clips	315	Dust Boots, Tie Rod End	350
Dimmer Lamp Instruction	219	Door Latch Striker Plates	312	Dust Shield, Bellhousing	586
Dimmer Switch Actuator	138	Door Latch Striker Screw	312	Dust Shields, Fender Skirt	232
Dimmer Switch Cover	138, 173	Door Lock	317		
Dimmer, Dash Panel Light	112	Door Lock Actuator, Power	618	E	
Dipstick Tube Seal, Oil	466	Door Lock Conversion Set, Power	613	E-Brake Pedal Pad	173
Dipstick Tube, Oil	460, 467	Door Lock Cylinder Retainer	317	EFI Air Cleaner Base	549
Dipstick, Oil	460, 467	Door Lock Knob	80-81	EFI Bypass Regulator	536
Dipstick, Transmission	574	Door Lock Knob Ferrule	80	EFI Conversion Set	549
Disc Brake Backing Plate	391	Door Lock Pawl	318	EFI Harness	612
Disc Brake Backing Plate Gasket	391	Door Lock Retainer	318	Elbow, Brake Cover	511
Disc Brake Caliper Bolt Sleeve	389	Door Lock Pillar U-Seals	230	Electric Cooling Fan	423-426
Disc Brake Caliper Mounting Bolt	390	Door Lock Rod	315	Electric Cooling Fan Motor	422
Disc Brake Caliper Sleeve Bushing	390	Door Lock Rod Retaining Clip	85, 315	Electric Fan Bracket	427
Disc Brake Conversion	372-373	Door Lock to Latch Rods	318	Electric Fan Controller	429
Disc Brake Conversion Nut	388	Door Lugs, Molding	245	Electric Mounting Set	427
Disc Brake Pad Retainer Cup	390	Door Mirror	320	Electric Fan Relay	428
Disc Brake Rotor	388	Door Mirror Gasket	321	Electric Fan Spacer	422
Disc, Clutch	588-589	Door Mirror Rivet	321	Electric Fan Thermo Switch	428
Disconnect Switch, Battery	620	Door Molding Insert	245	Electric Fan Wiring Harness with Relay	428
Disc Brake Brackets, Drop Spindles	393	Door Opener, Remote	614	Electric Fuel Pump	537
Distribution Block, Brake	376	Door Panel	70	Electric Glowdown Conversion	578
Distributor	496-497	Door Panel Carpet	71	Electric Water Pump	434
Distributor Advance Curve Set	499	Door Panel Cils	72-73	Electric Water Pump Drive Belt	434
Distributor Cap	500-501	Door Panel Coil Spring	85	Electric Water Pump Mounting Plate	434
Distributor Cap Retaining Clip	500	Door Panel Emblems	72	Electric Water Pump Pulley	434
Distributor Gasket	498	Door Panel Medallion	72	Electric Water Pump Relay	434
Distributor Gear	498	Door Panel Plugs	72-73	Electrical Connector Separator	620
Distributor Hold Down Clamp	498	Door Panel Rails	70	Electrical Manual	484
Distributor Housing Shims	498	Door Panel Reflector	72	Electronic Brake Master Cylinder	375
Distributor Intermediate Shaft	498	Door Panel Retainer	239	Electronic Speed Sensor Lead	378
Distributor Lead	498	Door Panel Trim	71	Electronic Vacuum Pump Set	378
Distributor Rotor	500-501	Door Panel Upholstery Button	72	Eliminator Rust Remover	334
Distributor Stud	498	Door Pull Handle Bumper	72	Emblem Adhesive	209
Distributor Tag	522	Door Pull Strap End Cap	85	Emblem Attachment Tape	205
Distributor Vacuum Advance	499	Door Push Button Spring	315	Emblem Barrel Nuts	201
Distributor Vacuum Line	498	Door Release, Interior	85	Emblem, Air Cleaner	210
Distributor Vacuum Tee	499	Door Shell	311	Emblem, Astro Ventilation	445
Distributor Washer	498	Door Sill Plate Screw	10	Emblem, Boy Tie	209
Distributor Wire Grommet	498	Door Sill Plates	10	Emblem, Console	170
Distributor Wire Harness	499	Door Skin, Lower	311	Emblem, Console Shift Plate	170
Dome Lamp	96-97	Door Skin, Outer	311	Emblem, Continental Set	328
Dome Lamp Base	96	Door Spear Molding Clips	243	Emblem, Hood Hood Number	209
Dome Lamp Bezel	96	Door Spring Tool	334	Emblem, Dash	104
Dome Lamp Bulb	96	Door Striker	312	Emblem, Engine Size	209
Dome Lamp Dimmer	97	Door Striker Bolt Washer	312	Emblem, Fender	203-205, 209
Dome Lamp Housing	96	Door Striker Washer	312	Emblem, Glove Box	210
Dome Lamp Lens	96	Door Switch, Power	81	Emblem, Grill	200-201
Dome Lamp Wiring Harness	97	Door Water Shields	225	Emblem, Hood	201-202
Door & Quarter Window Glass Holder	237	Door Weatherstrip Fastener	225	Emblem, Horn Cap	158
Door Aligning Bar	334	Door Weatherstrip Plug	226	Emblem, Horn Ring Shroud	158
Door Bottom, Inner	311	Door Window Frame Molding	237	Emblem, Hubcap	400
Door Bumpers	226	Door Window Seal Channel	170	Emblem, Hurst Equipped	593
Door Bushing Tool	334	Door, Console	570	Emblem, Quarter Panel	206-207
Door Edge Guard	191	Door, Fuel Filler	129	Emblem, Rear Panel	207-209
Door Frame Weatherstrip	225	Door, Glove Box	141	Emblem, Roof	207
Door Glass	234-235	Door Glove Box Molding	71	Emblem, Sail Panel	207
Door Glass Guide Stop Bumper	239	Double Flaring Tool	395	Emblem, Seat Belt	169
Door Glass Roller Catcher	239	Dowel Pins, Bellhousing	586	Emblem, Shift Plate Pattern	169
Door Glass Stop Bumper	233	Downpipe, Exhaust Manifold	586	Emblem, Tailgate	208
Door Handle Bumper	315	Drain Link, Center	349	Emblem, Tissue Dispenser	105
Door Handle Escutcheon	315	Drain Plug Gasket, Oil Pan	465	Emblem, Trunk	207-208
Door Handle Gasket	315			Emblem, Turbo-Jet Horsepower	210
Door Handle Guard	315				

Product Index

Emblem, Wheel Spinner	401	False Alarm	190	Filter, Air Cleaner	512-513
Emblem/Trim Adhesive	208	Fan Blade	421	Filter, Automatic Transmission	573
Emblems, Door Panel	72	Fan Blade, Alternator	421	Filter, Coolant	417
Emission Decal	215	Fan Blade, Radiator	421	Filter, Fuel	534
End Cap, Bucket Seat	37	Fan Bracket, Electric	427	Filter, Fuel Tank Pickup Tube	534
End Cap, Door Pull Strap	72	Fan Clutch	422	Filter, Headlamp Door Vacuum Line	259
End Links, Sway Bar	355	Fan Clutch to Water Pump Bolt	422	Filter, Ignition Noise	497
Engine Bolt Set	461	Fan Clutch to Water Pump Stud	422	Filter, Oil	471
Engine Coolant Decal	214	Fan Decal	214	Filter, Power Steering Fluid	340
Engine Coolant Plumbing	418	Fan Motor, Electric Cooling	422	Filter, Tachometer Noise	120
Engine Cover, LS	457	Fan Mounting Gasket	427	Fire Extinguisher	191
Engine Designation Emblems	409	Fan Pigtail Connector	428	Firewall Boot Seal	622
Engine Dress-Up Sets	209	Fan Shroud	416	Firewall Brake/Clutch Boot	177
Engine Frame Bracket	459	Fan Shroud Clutch Radiator	417	Firewall Carpet Guard	11
Engine Gasket Sets	460, 478	Fan Shroud Fastener	417	Firewall Guard Fastener	11
Engine Manuals	187	Fan Spacer	422	Firewall Insulation Pad	11-12
Engine Mount	458-459	Fan Spacer Bolt Set	422	Firewall Plug, Master Cylinder	376
Engine Mount Bolt	459	Fan Temperature Sensor	425	Firewall Relay Cover	618
Engine Mount Plate	459	Fan Temperature Sending Unit	427	Firewall Wire Port	622
Engine Mount Shim	459	Fan Temperature Sensor	427	Fitting, Brake Line	382
Engine Oil	471	Fan Temperature Switch	429	Fitting, Fuel Return Line	535
Engine Oil Cooler	468-469	Fan Thermostat, Electric	428-429	Fitting, O-Ring to Invert Flare	347
Engine Pull Bracket	459	Fan Wiring Harness, Electric	427	Fitting, Oil Line	169
Engine Pushrod	460	Fan, Electric Accessory	445	Fitting, Oil Line Block	169
Engine Refinishing Paint	456	Fan, Heater Blower Motor	443	Fitting, Oxygen Sensor	554
Engine Rotation Adapter Tool	456	Fascia, Dash Panel	104	Fitting, Power Steering Pump	343
Engine Side Covers	489	Fascia, Glove Box Door	141	Fitting, Rear Brake Hose Tee	384
Engine Size Emblem	209	Fascia, Instrument Dash	104	Fitting, Water Pump Bypass Hose Outlet	457
Engine Tools	456	Fast Idle Cut-Off Relay	513	Fittings, Transmission, Compression	577
Engine Valve Stem Seal	479	Fastener Set, Electrical I.D. Tag	522	Fittings, Compressor Block	451
Engine Wire Harness	603	Fastener Set, Front End	291	Fittings, Heater Hose	419
Engine Wiring Harness	612	Fastener Set, Grill	279	Fittings, Intake Manifold	484
Engine, Crate	457	Fastener, Bumper Cover	280	Fittings, Transmission Cooler Line	575
Epoxy Putty	255, 417, 527, 565	Fastener, Door Weatherstrip	225	Fittings, Transmission, Compression	577
Epoxy, Metal Weld	255, 417, 527, 565	Fastener, Firewall Guard	11	Flame Arrestor, Air Cleaner	510
Epoxy, Quick Set	205	Fastener, Hood Insulation	286	Flange, Exhaust	557
Escutcheon, Door Handle	315	Fastener, Rear Wheel Opening Cover	292	Flange, Header Collector Ball	552
Escutcheon, Interior Handle	83	Fastener, Set Adjuster Cover	37	Flasher, Four Way	141
Escutcheon, Windshield Wiper	297	Fastener, Turn ID	291	Flasher, Turn ID	274
Evaporator Core Expansion Tube	454	Fasteners, LED Accessory	182	Flasher, Turn Signal	152
Evaporator Core, AC	453	Fasteners, License Plate	182	Flashlight	419
Evaporator Kit	453	Fasteners, License Plate Mounting	284	Flexible Radiator Hose	182
Exhaust Balance Pipe	556	Fasteners, Underhood/Trunk	291	Flexlines, Stainless Steel Brake	382
Exhaust Clamp	557	Fasteners/Clips/Bolts	356-357	Flexplate	572
Exhaust Collector Gasket	552	Feed Wire, Power Seat	608	Flex-plate Cover	572
Exhaust Cutout	564	Feed Wire, Power Tailgate Window	606	Flexplate to Crankshaft Bolts	571
Exhaust Cutout Controller	564	Feeler Gauges	501	Float Adjustment Tool	543
Exhaust Deflector	565	Felt/Anti-Rattle, Window	227-228	Float, Fuel Tank Sending Unit	530
Exhaust Flange	557	Fender Bezel Gasket	292	Floor Brace, Center	300
Exhaust Flange Gasket	557	Fender Bolt, Power Seat	190	Floor Brace, Front	302
Exhaust Hanger	557	Fender Emblem	203-205, 209	Floor Brace, Under Seat	302
Exhaust Headers	550-551	Fender Eyebrow Molding	240	Floor Console	168, 171
Exhaust Manifold	551	Fender Louver	242-243	Floor Heat Shield	567
Exhaust Manifold Bolt Lock Set	554	Fender Molding Insert	245	Floor Insulation	567
Exhaust Manifold Bolt Set	554	Fender Mounting Bracket	242	Floor Mats	16-21
Exhaust Manifold Downpipe	556	Fender Patch Panel	292	Floor Mount Gas Pedal	173
Exhaust Manifold Gaskets	554	Fender Skirt	293	Floor Pan	299
Exhaust Manifold Heat Sleeve	553	Fender Skirt Clips	293	Floor Pan Plug	300, 325
Exhaust Manifold Rivets	554	Fender Skirt Dust Shields	232	Floor Pan Plug, Trunk	325
Exhaust Manifold Stud Set	554	Fender Skirt Mounting Bolt	293	Floor Pan Repair Set	335
Exhaust Manifold to Head Pipe Tube Ext.	553	Fender Skirt Scuff Plate	293	Floor Pan Toe Board	300
Exhaust Manifold Tube	553	Fender Skirt Seal	232, 293	Floor Pan, Rear Seat	300
Exhaust Paint	198	Fender Skirt Star Emblem	209	Floor Pan, Trunk	327
Exhaust Pipe Packing Gasket	557	Fender Splash Shield Clips	232	Floor, Trunk	326-327
Exhaust Pipe, Quarter Panel	557	Fender Support Brackets	292	Floor, Trunk Pan Sections	327
Exhaust Repair Kit	557	Fender to Cowl Bolts	292	Flywheel	587
Exhaust System	562-563	Fender to Valve Bracket	292	Flywheel Converter Cover	572
Exhaust Tip	565	Fender Washer, Cupped	292	Flywheel Cover Hardware	587
Exhaust Turndown	564	Fender Well, Front Inner	292	Flywheel Mounting Hardware	587
Exhaust Wrap	566	Fender Well, Rear Inner	292	Flywheel Ring Gear	587
Exhaust X-Bolts	556	Fender Wheelhouse Bolts	292	Flywheel to Crankshaft Bolt	586
Exhaust Y-Pipe	556	Ferrule, Door Lock Knob	80	Flywheel/Clutch Housing Cover	587
Expansion Valve, AC	455	Filter Detective	334	Fog, Lamp Relay	259
Extenders, Bench Seat	38	Filter Neck, Fuel	528	Fog, Adjustable	175
Extension Harness, Transistor Ignition Amplifier ..	605	Filter Panel, Bumper	281	Fog, Clutch	500
Exterior Screw Set	291	Filter Panel, Radiator	37	Formula Five PreLube Grease	353
Eyebar Extension	240	Filter Panels, Rear Seat	37	Formula Five PreLube Grease	353
Eyebar Molding	240	Filter Plug, Rear Axle	368	Frame, License	183
EZ-Slider Cable Set	445	Filler Tube, Oil	467	Frame, Quarter Window	237
		Filter Adapter, Deep Pan	573	Frame, Seat	38
		Filter Adapter, Oil	465	Frame, Vent Window	237
		Filter Canister, Oil	470	Freeze Plugs	461
		Filter Connector, Oil	465	Fresh Air Duct Seal Set	445
		Filter Decal, Oil	213	Front and Rear Suspension Sets	357-358
		Filter Magnet, Transmission	573	Front Bumper	281
		Filter Replacement, Oil	470	Front Bumper Filler	280
F					
Faceplate, Radio	126				
Factory Body Sheet	221				
Factory Service Manual	184				
Factory Shop Manual CD	184				

Product Index

Front Bumper Valve Bumper	293
Front End Fastener Set	231
Front End Suspension Rebuild	348
Front Fender	292
Front Floor Brace	302
Front Inner Fender Well	292
Front Lamp Harness Extension	602
Front Lamp Wiring Harness	602
Front Splash Pan Seal	232
Front Under Seat Mounting Bracket	301
Front Wheel Bearing Cap	394
Fuel Additive	532
Fuel Cap	529
Fuel Cap Decal	218
Fuel Decal	217
Fuel Evaporation Relay	523
Fuel Filler Door	539
Fuel Filler Door Bumper	233, 526
Fuel Filler Neck	528
Fuel Filler/Vent Hose	528
Fuel Filter	534
Fuel Filter Bracket	534
Fuel Filter Mount	534
Fuel Filter Spring	534
Fuel Gauge	108, 115
Fuel Gauge Lens	106
Fuel Hose	533
Fuel Hose End	533
Fuel Hose Fittings	533
Fuel Hose Stamp	529
Fuel Injection System	548
Fuel Inlet Nut	542
Fuel Line Armor Shielding	535
Fuel Line Clips	535, 536
Fuel Line Disconnect Set	533
Fuel Line Set	532
Fuel Line Y-Block	536
Fuel Line, Dual Feed	542
Fuel Lines	534
Fuel Pressure Gauge	534
Fuel Pressure Regulator	537
Fuel Pressure Tester	534
Fuel Pump	526, 531
Fuel Pump Block Off Plate	531
Fuel Pump Bolts	531
Fuel Pump Mounting Plate	531
Fuel Pump Mounting Plate Gasket	531
Fuel Pump Pushrod	531
Fuel Pump Relay	533, 537, 621
Fuel Pump Safety Switch	537
Fuel Pump to Carb Line	532
Fuel Pump, Electric	536-537
Fuel Return Line	535
Fuel Return Line Fitting	535
Fuel System Cleaner	536
Fuel Tank	526-527
Fuel Tank Anti-Squeak Insert	527
Fuel Tank Filler Grommet	528
Fuel Tank Filler Hose	528
Fuel Tank Filler Neck	526
Fuel Tank Filler Neck Hardware	526
Fuel Tank Filler Neck Hose	526
Fuel Tank Filler Screen	526
Fuel Tank Mounting Brace	527
Fuel Tank Mounting Strap Bolt Set	527
Fuel Tank Mounting Straps	527
Fuel Tank Neck	528
Fuel Tank Pick-Up Tube Filter	528
Fuel Tank Sealer	533
Fuel Tank Sending Unit	523, 526, 530
Fuel Tank Sending Unit Float	530
Fuel Tank Sending Unit Gasket	530
Fuel Tank Sending Unit Install Set	530
Fuel Tank Sending Unit Lock Ring	530
Fuel Tank Sending Unit Lock Ring Tool	530
Fuel Tank Vent Line	535
Fuel Tank Vent Valve	528
Fuel Vapor Charcoal Canister	533
Fuel Vapor Line	535
Fuel Wire Ring Hose Clamp	533
Fuel/Brake Line Clip	383
Funnel	471
Fuse Block	619
Fuse Block Screws	619
Fuse Circuits Add-On	619
Fuse Panel Wiring	619

Fuse Tap/Fuse Holder	620
Fuse, Starter Solenoid to AC Harness	610
Fuses	618
Fuzzy Dice	182
G	
Garage Signs	181
Garage Utility Mat	191
Gas Cap	529
Gas Cap Decal	218
Gas Decal	217
Gas Door	243
Gas Pedal, Floor Mount	173
Gas Tank	526-527
Gasket Sealant	478
Gasket Set, Rebuild Manual Trans	585
Gasket Seal, Trans	460, 478
Gasket, Air Cleaner	236
Gasket, Antenna Mounting	135
Gasket, Axle Flange	370
Gasket, Back-Up Housing	269
Gasket, Carburetor	540
Gasket, Disc Brake Backing Plate	391
Gasket, Distributor	498
Gasket, Door Handle	315
Gasket, Exhaust Collector	552
Gasket, Exhaust Flange	557
Gasket, Exhaust Pipe Packing	557
Gasket, Fan Mounting	427
Gasket, Fender Bezel	292
Gasket, Front Side Marker Bezel	265
Gasket, Fuel Pump Mounting Plate	531
Gasket, Fuel Tank Sending Unit	532
Gasket, Header	552
Gasket, Heat Riser	553
Gasket, Heater Plenum to Firewall	442
Gasket, Heater to Firewall	442
Gasket, Inlet Manifold	484-485
Gasket, Intake Manifold348/409	463
Gasket, License Plate Mount	275
Gasket, Master Cylinder to Firewall	376
Gasket, Oil Pan	465
Gasket, Oil Pan Drain Plug	465
Gasket, Outer Door Mirror	524
Gasket, Parking Lamp Lens	263
Gasket, Rear Axle Flange	370
Gasket, Rear End Cover	369, 371
Gasket, Side Marker Lens	265
Gasket, Tail Lamp Lens	274
Gasket, Thermostat	441
Gasket, Timing Cover	474
Gasket, Transmission Pan	573
Gasket, Trunk Lock Cylinder	318
Gasket, Valve Cover	460, 494
Gasket, Water Pump	435
Gasket, Water Pump Backing Plate	435
Gasket, Water Pump to Block	435
Gasket, Windshield Wiper Motor	296
Gaskets, Exhaust Manifold	554
Gaskets, Head	478
Gauge Bulb and Socket	123
Gauge Conversion, Digital	113
Gauge Harness	123
Gauge, Lamp LED Bulbs	123
Gauge Lens	107
Gauge Mount Angle Ring	122
Gauge Mount Pedestal	122
Gauge Oil Line, Console	169
Gauge, On/Off, Under Dash	534
Gauge Pod	122
Gauge, Ammeter	115
Gauge, Compass	109
Gauge, Fuel	108
Gauge, Fuel Pressure	534
Gauge, Oil Pressure	115
Gauge, Speedometer	108
Gauge, Tachometer	120-121
Gauge, Temperature	108, 115
Gauges	112-120
Gear Inlet, Sending Unit	123
Gear Oil, Synthetic	371
Gear, Distributor	498
Gear, Speedometer	111
Gear, Timing	473
Gearbox, Power Steering	346

Gearshift Rod, Transmission	585
Gearshift Lever Grommet	151
Generator Rebuild Set	521
Generator Belt	523
Generator Brace	524
Generator Mount Sleeve	521
Generator Mounting Bracket	521
Generator Rebuild Set	521
Generator Tag	522
Generator Warning Tag	213
Generator/Oil Lens	237
Glass Installation Tape	224
Glass Molding Clip Installation Tool	255
Glass Seal Rope Tool	255
Glass Setting Tape	237
Glass Window Arm, Convertible Top Rear	306
Glass, Door	234-235
Glass, Quarter	236
Glass, Rear Window	236
Glass, Side Window	236
Glass, Tailgate Window	236
Glass, Vent Window	234-235
Glass, Windshield	234
Glove Box	141
Glove Box AC Button Switch	449
Glove Box Case, Hook & Spring	142
Glove Box Door	141
Glove Box Door Arm Bumper	142
Glove Box Door Bumpers	142
Glove Box Door Emblem	142
Glove Box Door Fascia	141
Glove Box Door Grommet	142
Glove Box Door Hinge	141
Glove Box Door Stop Brackets	141
Glove Box Emblem	142
Glove Box Lamp Wiring Harness	142
Glove Box Lock	142
Glove Box Lock Nut Tool	142
Glove Box Lock Retainer	142
Glove Box Locker Striker Plate	142
Glove Box Radio Mount	127
Glove Box Screw	141
Glove Box Screw Clips	111
GPS Speed Sender	103
Grab Handle, Dash	103
Grease Cap, Wheel Bearing	394
Grease, Formula Five PreLube	353
Grease, High Temp Wheel Bearing	394
Grill	278-279
Grill Attaching Rivet	279
Grill Brackets	279
Grill Emblem	200-201
Grill Emblem Bezel	200
Grill Filler Bumper	233
Grill Guard	282
Grill Hardware Set	279
Grill Insert	279
Grill Molding	241
Grill Ornament	279
Grill Screen	279
Grill Screen Mounting Bracket	279
Grill Support and Bumper Filler	285
Grill Support Brackets	285
Grill, Kick Panel Speaker	133
Grill, Rear Speaker	133
Grommet, AC Hose	455
Grommet, Accelerator Rod	172
Grommet, Convertible Motor	307
Grommet, Convertible Top Pump	307
Grommet, Core Support (Electrical)	622
Grommet, Distributor Support	498
Grommet, Fuel Tank Filler	528
Grommet, Gearshift Lever	151
Grommet, Glove Box Door	142
Grommet, Parking Brake Release Rod	383
Grommet, Radiator Support Wiring	623
Grommet, Speedometer Cable	110
Grommet, Valve Cover	491
Grommet, Wiper Motor	296
Grommet, Wire	623
Grommet, Windshield Antenna	135
Ground Strap	610
Ground Strap, Antenna	133
Ground Strap, Wiper Motor	296
Ground Wire, Instrument Cluster	107
Guard Fastener, Firewall	11

INDEX, POLICIES & ORDER FORMS

Product Index

Guard, Bumper	282
Guard, Carpet Firewall	11
Guard, Door Handle	315
Guard, Grill	282
Guide Pin Bushing	306
Guide Pin, Convertible Top Header Bow	306
Guide Plate, Brake Shoe	391
Guide, Shoulder Belt	50

H

Halogen Headlamp Bulb	276
Handle, Convertible Top Latch	306
Handle, Hood Release	287
Handle, Inner Door	82
Handle, Outer Door	314
Handle, Parking Brake Release	385
Handle, Vent Crank	83-84
Handle, Window Crank	82-84
Handle/Knob, Shift	583
Hardtop Weatherstrip Set	223
Hardware Set, Brake	392
Hardware Set, Horseshoe Shifter	582
Hardware, Bumper Mounting	283
Hardware, Flywheel Cover	587
Hardware, Flywheel Mounting	587
Hardware, Front Shock Mounting	363
Hardware, Master Cylinder	376
Hardware, Parking Brake Cable	387
Hardware, Rear Axle Bearing Retainer	370
Hardware, Retaining Clips	283
Hardware, Seat Belt	48
Hardware, Steering Coupler	345
Hardware, Steering Wheel Shroud	156
Hardware, Torque Converter	570
Hardware, Transmission Crossmember	569
Hardware, Transmission Mount	569
Harmonic Balancer	477
Harmonic Balancer Cover	477
Harmonic Balancer Tool	477
Harmonic Damper	477
Harness Pads, Seat Belt	49
Harness Wiring, Electric Fan	427
Harness, Chassis Trunk Mount	612
Harness, EFI	612
Harness, Gauge	123
Harness, Power Antenna	135
Harness, Power Top	608
Harness, Quad Hi-Low	260
Harness, Starter to Transfer Ign Amp	505
Harness, Steering Column Adapter	149
Harness, T-56 Magnum	607
Hat/Cap	178, 180
Hazard Switch Knob	141
Head Bolts	461
Head Gaskets	478
Header Back Pipe	556
Header Bolt	552
Header Bow, Convertible Top	305
Header Seal, Convertible Top	305
Header Strip, Convertible Top	305
Header Wrap	566-567
Headers, Exhaust	550-551
Headlamp	256-259
Headlamp Adjusting Nut	262
Headlamp Adjusting Spring	262
Headlamp Beam Adjusting Screw/Nut	262
Headlamp Bezel	261, 279
Headlamp Bezel Anchor Nut	260
Headlamp Bezel Clip	260
Headlamp Bezel Gasket	260
Headlamp Bucket Mounting Panel	262
Headlamp Bulb, Halogen	276
Headlamp Check Valve	259
Headlamp Connection Wiring Harness	602
Headlamp Cover	259
Headlamp Dimmer Switch	138, 150
Headlamp Dimmer Switch Bezel	138
Headlamp Door Vacuum Line Filter	259
Headlamp Half Shield	259
Headlamp Housing	262

Headlamp Mounting Bucket	260
Headlamp Relay Switch	259
Headlamp Retaining Ring	262
Headlamp Retaining Ring Screw	262
Headlamp Socket	259
Headlamp Switch	137-138
Headlamp Switch Knob	138
Headlamp Switch Mounting Nut	138
Headlamp Switch Nut Tool	138
Headlamp Visor	259
Headlamp Washer Drip Valve Solenoid	259
Headlamp Wiring Instruction Card	219
Headlight Retaining Ring	260
Headlight Bezel Mounting Bracket	260
Headline Bow Locator Clip	92
Headliner	86-88
Headliner Bow Clip	92
Headliner Bow Support Clip Set	92
Headliner Bolts	92
Headliner Trim Set	92
Headliner Upholstery Tool	92
Headrest Cover	40-41
Headrest Lock	40
Heat Riser Gasket	553
Heat Riser Tube	553
Heat Riser Valve	553
Heat Shield, Air Intake	513
Heat Shield, Battery	601
Heat Shield, Carburetor	542
Heat Shield, Floor	567
Heat Shield, Muffler	559-560
Heat Shield, Spark Plug Wire	508
Heat Shield, Starter	518
Heat Shield, Turbo	567
Heat Sleeves	566
Heat Stove Mounting Stud	553
Heat Stove, Exhaust Manifold	553
Heater Air Deflector	443
Heater Blower Motor	443
Heater Blower Motor Fan	443
Heater Blower Motor Resistor	444
Heater Box	443
Heater Box Control Cable Clip	443
Heater Box Resistor Screw	444
Heater Box Seal Set	443
Heater Control Blower Switch	444
Heater Control Lens Clip	446
Heater Control Lever	446
Heater Control Panel Bracket	446
Heater Control Valve	442
Heater Core	442
Heater Core Clamp	442
Heater Core Mounting Clip	442
Heater Deflector Duct	443
Heater Deflate Plate	443
Heater Hose	419
Heater Hose Bracket	420
Heater Hose Clamp, Alternator	523
Heater Hose Fittings	419
Heater, Fanon Intake Manifold	484
Heater to Firewall Gasket	443
Heater to Inlet Manifold Hose Nipple	419
Heater Vacuum Control Switch	445
Heater Valve Vacuum Switch	449
Heater, Vent Intake Manifold	484
Heater/AC Blower Control Switch	445
Heater/AC Control Assembly	446
Heater/AC Control Cable Set	445
HEI Battery/Tach Pigtail	499
HEI Distributor Pigtail	499
HEI Ignition Coil	503
HEI Wire Harness	499
Hex Nut, Self-Locking	254
Hi Temp Coating	566
Hidden Antenna	324
Hinge Arm, Trunk	313
Hinge Pin, Door	313
Hinge Repair Set, Door	313
Hinge Spring, Door	313
Hinge, Door	313
Hinge, Glove Box Door	141
Hinge, Luggage Compartment	329
Hinges, Hood	288-289
Hinges, Trunk Lid	324
Hold Down, Valve Cover	494
Hood Adjuster Bumper	233

Hood Bar Molding	241
Hood Duct	290
Hood Emblem	201, 202
Hood Hinge Bolts	288
Hood Hinge Spring	289
Hood Hinge Support	289
Hood Hinges	288-289
Hood Insulation	286
Hood Insulation Fastener	286
Hood Lamp to Hood Bumper	233
Hood Lamp Wire Harness	329
Hood Latch	287
Hood Latch Support	287
Hood Lip Molding	241
Hood Louver Drains	290
Hood Louvers	290
Hood Mirrors	291
Hood Number Emblem	209
Hood Pilot Bolt	287
Hood Pins	288
Hood Pop-up Spring	287
Hood Prop Rods	286
Hood Release Cable	287
Hood Release Handle	287
Hood Rubber Bumper	233
Hood Scoop	290, 516
Hood Split Molding	241
Hood to Cow Seal	232
Hood to Grill Bumper	233
Hood to Radiator Seal	251
Hoops	286
Hook, Coat Hanger	93
Hook, Convertible Top Latch Knuckle	306
Hook, Release Seat Backrest	37
Hook, Sun Visor	93
Horn	167
Horn Button	156-157, 162-163, 166
Horn Button Contact	157
Horn Cap	158
Horn Cap Emblem	158
Horn Cap Mount/Contact Plate	157
Horn Cap Mounting Ring	157-158
Horn Mount Bolt	167
Horn Relay	167
Horn Relay Pigtail	167
Horn Ring	156
Horn Ring Installation Set	157
Horn Ring Shroud	157
Horn Ring Shroud Emblem	158
Horn Ring Support	157
Horseshoe Shifter Detent	582
Horseshoe Shifter Handle	582
Hose Adapter, Coolant	417
Hose Adapter, Radiator	418
Hose Clamp Ends	420
Hose Clamp Pliers	420
Hose Clamp, Heat Shrink	420
Hose Clamps	420
Hose Clip, PCV	420
Hose, Air Cleaner	445
Hose, Brake Flex	384
Hose, Defroster Duct	445
Hose, Fuel	533
Hose, Fuel Filter/Vent	528
Hose, Fuel Tank Filler Neck	418
Hose, Heater	419
Hose, Lower Radiator	528
Hose, PCV Valve	419
Hose, Power Steering	342-343
Hose, Radiator Flexible	418
Hose, Radiator Overflow	415
Hose, Upper Radiator	419
Hose, Water Pump Bypass	437
Hoses, Air Injection	555
Hoses, Oil Filter	464
Housing Cover, Flywheel/Clutch	587

Product Index

Housing, Back-Up Lamp 269
Housing, Cigarette Lighter 144
Housing, Column Shift Lens 107
Housing, Console Lamp 169
Housing, Dash AC Vent 447
Housing, Dome Lamp 96
Housing, Headlamp 262
Housing, License Lamp 275
Housing, Parking Lamp 264
Housing, Power Seat Transmission 49
Housing, Rear Axle 369
Housing, Speedometer Gear 111
Housing, Taillamp 273
Hub Roller Bearing 394
Hub, Steering Wheel 158
Hubcap 400
Hubcap Emblem 400
Hurst Equipped Emblem 593
Hurst Roll Control 378
HVAC/Compressor Relay 606
Hydraulic Clutch Set 589
Hydraulic Release Bearing 589
Hydraulic System Bleeder Set 307

I

Idle Stop Solenoid Control Wire 610
Idler Arm 349
Idler Arm Conversion Bracket 349
Idler Pulley 435, 476
Ignition Amplifier Decal 213
Ignition Amplifier, Transistor 505
Ignition and Trunk Lock Key Cover 318
Ignition Box 499
Ignition Coil 501-503
Ignition Coil Bracket 502
Ignition Coil Bracket Hardware 502
Ignition Coil Cover 490
Ignition Coil Decal 213
Ignition Coil Resistor 502
Ignition Coil Wire 503
Ignition Condenser 501
Ignition Control Module 499, 501, 504
Ignition Distributor 496-497
Ignition Distributor Washer 498
Ignition Indicator Bezel 136
Ignition Instruction Sleeve 219
Ignition Key Buzzer Switch 137
Ignition Lock 137
Ignition Manual 189
Ignition Module Insulating Mounts 499
Ignition Noise Filter 497
Ignition Points 501
Ignition Rotor 500-501
Ignition Switch 137
Ignition Switch Actuator Rack 137
Ignition Switch Bezel Nut 136
Ignition Switch Bezel Nut Tool 136
Ignition Wires 505-507
Ignition, Door, Glove Box & Trunk Lock Set 316
In-Dash Clock 609
Indicator Lamps 109
Inner Door Bottom 311
Inner Door Handle 82
Inner Door Handle Retaining Clip 84
Inner Door Handle Seal 85
Inner Fender Seal 232
Inner Fender Well, Front 292
Inner Glove Box 141
Inner Rear Side Panel 301
Inner Rear View Mirror 94-95
Inner Rear View Mirror Support 95
Inner Rocker Panel 303
Inner Side Panel 57-69
Input Shaft Gear Roller 585
Insert, Dash Panel 104
Insert, Door Molding 245
Insert, Fender Molding 245
Insert, Grill 279
Insert, Motor Mount 458
Inserts, Console 168
Inspection Sheet 521
Inspection Stamp 529
Installation Set, Horn Ring 157
Installation Set, Horseshoe Shifter 582
Installation Set, Ring & Pinion 370

Installation Tape, Glass 224
Installation, Upholstery Set 37
Instruction Card, Automatic Eye 220
Instruction Card, Cruise Control 220
Instruction Card, Headlamp Washer 219
Instruction Card, Mirror 220
Instruction Card, Shock 219
Instruction Card, Compass 219
Instruction Decal, Jacking 216
Instruction Decal, Wheel Lock 216
Instruction Folder, Chrome 219
Instruction Sleeve, Ignition 219
Instruction Tag, Luggage Rack 219
Instruction, Dimmer Lamp 219
Instruction, Paint 219
Instruction, Radio 220
Instruction, Seat Belt 220
Installation, Cluster Ground Wire 107
Instrument Cluster Lamp Socket 105
Instrument Cluster LED Upgrade 105
Instrument Cluster Lens Plug 107
Instrument Cluster Printed Circuits 105
Instrument Cluster Screw Set 104
Instrument Dash Fascia 104
Instrument Housing Seal 105
Instrument Lamp Bulb, LED 105
Instrument Lens Set 106
Instrument Panel Dimmer Switch 136
Instrument Panel Surround 104
Instrument Panel, Under Dash 122
Insulation Damper Pad 15
Insulation Pad, Firewall 11-12
Insulation Tape 12
Insulation Wrap 600
Insulation, Battery 600
Insulation, Floor 567
Insulation, Hood 286
Insulation, Interior 11-15
Insulation, Muffler 560
Insulation, Noise Barrier 10
Insulation, Spray-On 13, 195
Insulation, Temperature Sending Wire 427
Insulator, AC Condenser 452
Insulator, Carburetor 543
Insulator, Coil Spring 361
Intake Manifold 460, 481-483
Intake Manifold Bolts 485
Intake Manifold Fittings 484
Intake Manifold Gasket 460, 484-485
Intake Manifold Heat Shield 484
Intake Manifold Heater, Fenton 484
Intake Manifold Linkage 484
Intake Manifold Stud Bolt 522
Intake Manifold Washer 485
Intake, Air 513
Intake, Fuel Injection 513
Interchangeable Parts Catalog 186
Interior Center Pillar Cap 93
Interior Decal 217
Interior Handle Escutcheon 83
Interior Insulation 11-15
Interior Manuals 189
Interior Medallions 72
Interior Paint 197
Interior Screws, Sets 73
Interior Screws 73
Interior Side Panel Sets 52-57
Intermediate Steering Shaft 345
Intermittent Wire Module 294
Isolators, Coil Spring 361
Isolators, Radiator 413

J

J-Strap Clips, Wiring Harness 623
Jack Storage Bag 330
Jack Wrench Storage Sleeve 330
Jacking Instruction Decal 216
Junction Block 622
Jute Padding, Carpet 90
Jute Padding, Rear Seat Shelf 107

K

Key Cover, Ignition & Trunk Lock 318
Keychain 182

Keyless Entry System 614
Keyless Entry System, Remote Start 618
Keys, Replacement 318
Kick Panel 51
Kick Panel Cable Clip 51
Kick Panel Carpet 51
Kick Panel Extension Molding 71
Kick Panel Speaker Baffles 129
Kick Panel Speaker Grill 133
Kick Panel Speaker Spacer 133
Kick Panel Speakers 131
Kick Panel Trim 51
Kick Panel Vent Assembly 51
Kick Panel Vent Cable 51
Kick Panel Vent Grills 51
Kick Panel with Speakers 131
Kickdown Cable 547
Kickdown Cable Bracket 547
Kickdown Cable Sets, Transmission 578
Kickdown Rod Clip 579
Kickdown Rod, Transmission 579
Kickdown Switch 579
Kickdown Wiring Harness 151
Knob, Column Shift Lever 151
Knob, Convertible Top Switch 140
Knob, Dash Clock Reset 109
Knob, Door Lock 80-81
Knob, Hazard Switch 141
Knob, Headlamp Switch 138
Knob, Seat Adjusting 37
Knob, Tripmeter Reset 109
Knob, Turn Signal Lever 152
Knob, Vent Pull 446
Knob, Windshield Crank 83
Knob, Wiper Switch 140
Knob/Handle, Shift 583
Knobs, Radio 126
Knobs, Temperature Control 446
Knock Sensor, Crankshaft 306
Knuckle, Convertible Top Latch Hook 306

L

Lake Pipes 556
Lamp Assembly, Trunk 329
Lamp Assembly, Underhood 290
Lamp Bulbs 276-277
Lamp Courtesy, Under Dash 105
Lamp Flasher, LED 276
Lamp Harness, Rear Body 604
Lamp Harness, Rear Intermediate 606
Lamp Hood, Ashray Fire Optic 144
Lamp Housing, Console 169
Lamp LED, Dome 97
Lamp Pigtail 275
Lamp Seal, Side Marker 265
Lamp Socket, Ashray 144
Lamp Socket, Instrument Cluster 105
Lamp Socket, Quarter Dome 96
Lamp Switch, Back-Up 139
Lamp, Dome 96
Lamp, LED Indicator 609
Lamp, Parking 263
Lamp, Rear Marker 264
Lamp, Side Marker 265
Latch Assembly, Door 311
Latch Striker Screw, Door 312
Latch, Convertible Top 306
Latch, Hood 287
Latch, Tailgate 329
Latch, Trunk 329
Lead, Distributor 498
Lead, Electronic Speed Sensor 571
LED Auxiliary Lamp 609
LED Clearance Lamp 265
LED Indicator Wiring 123
LED Lamp Bulb 277
LED Lamp Flasher 276
LED Marker Lamp 265
LED Taillamp Circuit Board 270
LED Taillamps Board 271
Lens Gears 271
Lens Plug, Instrument Cluster 107
Lens Set, Instrument Panel 106
Lens, Back-Up Lamp 267-270
Lens, Clock 106-107

INDEX, POLICIES & ORDER FORMS

Product Index

Lens, Column Shift Indicator	107
Lens, Console	169
Lens, Console Lock	170
Lens, Console Shift	169
Lens, Corner Lamp	264
Lens, Dome Lamp	96
Lens, Fuel Gauge	106
Lens, Gauge	107
Lens, Generator/Oil	107
Lens, License Lamp	275
Lens, License Plate Lamp	275
Lens, Map Light	95
Lens, Odometer	106
Lens, Parking Lamp	263
Lens, Radio	127
Lens, Rear Side Marker	265
Lens, Speedometer	106
Lens, Speedometer	106
Lens, Taillamp	267-270
Lens, Transmission Indicator	107
Lens, Vacuum Gauge	107
Lens, Water Temperature	106
Lever, Column Gearshift	151
Lever, Heater Control	446
Lever, Rear Door Security Lock	315
Lever, Shift	582
Lever, Shift Detent	582
Lever, Steering Column	152
Lever, Tilt Wheel Lock	150
Lever, Turn Signal	151, 595
Lever, Turn Signal with Cruise	152
License Frame	183
License Lamp Housing	275
License Lamp Lens	275
License Plate	183
License Plate Bolt	182
License Plate Bracket	275, 284
License Plate Fasteners	182
License Plate Frame	182
License Plate Lamp Gasket	275
License Plate Lamp Socket	275
License Plate Mounting Hardware	284
License Plate Panel	284
License Plate Panel Clip	284
License Plate Stopper	233
License Plate Transport	183
Lid, Air Cleaner	510
Lifter Valley Oil Baffle	484
Lifters	479
Light Bulb Covers	123
Light, Shift	122-123
Lighter Tag, Cigarette	219
Lighter, Cigarette	143
Line Clamps	533
Line Lock	378
Line Set, Fuel	532
Line, Fuel Return	535
Line, Fuel Vapor	535
Line, Power Steering	343
Liner, Window Channel	230
Linkage Bushing, Shift	591
Linkage Rod, Shifter	583
Linkage Set, Carburetor	544
Linkage Set, Manual Trans Shifter	593
Linkage Set, Steering	348
Linkage, Column Shift	582
Literature, Automotive	186-188
Lock and Cable Car Cover Set	5
Lock Cylinder Gasket, Trunk	318
Lock Cylinder Pawl, Trunk	317
Lock Cylinder, Tumbler Spring	317
Lock Knob, Door	80-81
Lock Pawl, Door	318
Lock Plate Cover	149
Lock Retainer, Glove Box	142
Lock Ring, Fuel Tank Sending Unit	370
Lock Set, Ignition, Door, Glove Box & Trunk	316
Lock Washer, Wheel Cylinder	372
Lock, Axle Shaft	368
Lock, Console	170
Lock, Console Case	317
Lock, Door	317
Lock, Glove Box	142
Lock, Headrest	40
Lock, Ignition	317
Lock, Trunk	317

Locking Differential	370
Lockout, Vacuum Advance	498
Locks, Wheel	390
Lockstrip Insert Tool	255
Lockup Kit, Torque Converter	570-571
Loufer, Fender	242-243
Lower, Quarter Panel	247
Lower, Wheel	290
Lower Column Bearing	149
Lower Column Bearing Set	149
Lower Control Arm	351
Lower Control Arm Plate Set	351
Lower Control Arm Shaft	352
Lower Outer Door Skin	311
Lower Radiator Hose	418
Lower Rear Shock Bolt	363
Lower Rear Trailing Arms	364
Lower Valve Cover Intake	241
Lower Window Channel	237
LS Engine Conversion Set	457
LS Engine Cover Kit	457
Lubricant, Rear Axle	371
Lubricant, Stick	333
Lug Nuts, Wheel	398-399, 404-408
Lug Wrench	330
Luggage Compartment Hinge	329
Luggage Compartment Pull Strap	329
Luggage Rack Instruction Tag	219
Luggage Rack Pad	329

M	
Magnet, Car Accessories	181
Manifold Gasket, Intake	460, 484-485
Manifold Heater, Fenton Intake	484
Manifold, AC	450
Manifold, Exhaust	551
Manifold, Intake	460, 481-483
Manual Bleed Pashrod	276
Manual Choke Cable	545
Manual Choke Cable Mount Bracket	545
Manual Floor Shifter	592
Manual Inflation Air Hose	558
Manual Shift Knob	594-595
Manual Shift Lever	592-593
Manual Shifter Installation Set	592
Manual Steering Center Link	348
Manual Steering Center Link Adapter	348
Manual Steering Center Link Repair Set	348
Manual Steering Shifter Linkage Set	588
Manual Transmission Fluid	588-589
Manual Transmission Pilot Bushing	586
Manual Transmission Rebuild Gaskets	585
Manual Transmission Shift Arm	593
Manual Transmission TCS Relay	593
Manual Transmission TCS Switch	593
Manual, Fuel Injection	187
Manual, General Repair	185
Manual, Shop Service	184
Manual, Transmission	188
Manual, Wiring	189
Manuals, Carburetor	187
Manuals, Engine	187
Manuals, Interior	189
Manual, Paint & Body	188
Map Light Lens	95
Marker Lamp, LED	265
Marker Lamp, Rear	264
Marker, Frame and Engine	197
Master Cylinder Brake Lines	376
Master Cylinder Cover	376
Master Cylinder Cover Bail	377
Master Cylinder Diaphragm	377
Master Cylinder Firewall Plug	376
Master Cylinder Pushrod Kit	376
Master Cylinder Pushrod Set	376
Master Cylinder Resub Set, Brake	376
Master Cylinder to Firewall Gasket	376
Master Cylinder, Brake	375
Master Cylinder, Electric Brake	375
Master Cylinder, Hydraulic Booster	374
Master Part Catalog	185
Master/Slave Cylinder, Clutch	589
Mat Tape	13
Mats, Floor	16-21
Mats, Trunk	330-331

Medallions, Door Panel/Upholstery	72
Memory Circuit Retainer	601
Metal Weld Epoxy	255, 417, 527
Metering Valve, Disc Brake	380
Mirror Bracket Mounting Screw	321
Mirror Bracket, Outer Door	321
Mirror Gasket, Outer Door	321
Mirror Instruction	220
Mirror Mounting Bushing	95
Mirror, Inner Rear View	94-95
Mirror, Outer Door	319-320
Mirror, Sun Visor	95
Mirrors, Trunk	330
Mirrors, Underhood	291
Modulator Valve, Transmission	577
Module, Ignition Control	499, 501, 504
Molded Radiator Hose	418
Molding Clip Retaining Nut	253
Molding Clip, Quarter Window	253
Molding Clip, Windshield	252
Molding Clips	251, 254
Molding Insert, Door	245
Molding Release Tool	255
Molding Screw, Rocker Panel	246
Molding Tape, Side	245
Molding Tool, Windshield	255
Molding Trim, Seat	37
Molding, Armrest Base	75
Molding, Back Glass	245
Molding, Body Side	242-244
Molding, Bucket Seat	37
Molding, Door Window Frame	237
Molding, Door/Rear Panel	71
Molding, Fender	245
Molding, Fender Eyebrow	240
Molding, Gas Door Guard	243
Molding, Grill	241
Molding, Hood Bar	241
Molding, Hood Lip	241
Molding, Hood Split	241
Molding, Quarter Panel	247
Molding, Quarter Vertical Window	230
Molding, Rear Body Panel	248
Molding, Rear Cove	248-249
Molding, Rear Seat Garnish	37
Molding, Rear Window	245
Molding, Rear Window Trim	92
Molding, Rocker Panel	246-247
Molding, Roof Drip	245
Molding, Trunk	248
Molding, Trunk Lid	249-250
Molding, Wheel Opening	247
Molding, Windshield	248
Moldings, Armrest Cover	75
Moldings, Lower Valve	241
Moldings, Taillamp Panel Trim	249
Morse Cable Bracket	543
Motor Mount	458-459
Motor Mount Bolt	459
Motor Mount LS Adapter	457
Motor Mount Plate	459
Motor Mount Shim	459
Motor Oil	471
Motor Pump Assembly, Convertible Top	307
Motor, Shield, Convertible Top	307
Motor, Electric Cooling Fan	422
Motor, Heater Blower	443
Motor, Power Window	617
Motor, Windshield Wiper	296
Mount Set, Power Cylinder	347
Mount, Shims, Body	359
Mount, Motor	458-459
Mount, Steering Column	149
Mount, Transmission	569
Mounting Bracket, AC	452
Mounting Brackets, Master Cylinder/Booster	379
Mounting Brackets, Radiator	413
Mounting Gasket, Taillamp	274
Mounting Hub Adapter	162-163
Mounting Nut, Roof Rack	329
Mounting Nut, Trunk Rack	329
Mounting Pads, Radiator	413
Mounting Ring, Horn Cap	158
Mounting Screw, Rear View Mirror	95
Mounting Set, Back-Up Switch	139
Mounting Set, Electric Fan	427

Product Index

Mounting Set, Outer Mirror 321
 Mounting Set, Steering Wheel 157
Mounting Set, Transmission Cooler 576
 Mounting Straps, Fuel Tank 527
 Mounts, Body 359
 Mounts, Ignition Module 499
 Muffler Assembly, AC 455
 Muffler Clamp 557
 Muffler Hanger 557
 Muffler Heat Shield 559-560
 Muffler Repair Kit 560
 Muffler Support Bracket 557
 Mufflers 558-561
Multi Plastic Hole Plug 633
Multiple Task Relay 209

N

Neon Clock 182
 Neutral Safety Switch 139
Noise Barrier Insulation 10
Noise Filter, Tachometer 120
 Noise Suppressor, Radio 127
 Nozzle, Windshield Washer 297
Nut & Cotter Pin Kit, Spindle 393
 Nut & Washer, Pitman Arm 348
Nut Tension, Tire Steering 149
Nut Wing, Air Cleaner 511
 Nut, Alternator Pulley 523
 Nut, Antenna 135
 Nut, Back-Up Lamp 269
Nut, Brake Rotors/Drum 388
Nut, Disc Brake Conversion 388
 Nut, Fuel Inlet 542
 Nut, Headlamp Adjusting 262
 Nut, Headlamp Bezel Anchor 260
 Nut, Headlamp Switch Mounting 138
 Nut, Park Brake Adjustment 387
Nut, Pedal Pushrod Coupling 177
 Nut, Pitman Arm Shaft Lash Adjuster 347-348
Nut, Power Steering Control Valve Castle 345
 Nut, Power Steering Pulley 341
 Nut, Radio Shaft 126
 Nut, Spare Tire Hold Down 330
 Nut, Steering Wheel Hub 157
Nut, Thread Cutting 201-205
Nut, Voltage Regulator 522
 Nut, Windshield Wiper Switch 140
 Nut, Wiper Switch Bezel 140
Nuts, Amnest Retainer Clip 78
Nuts, Barrel 201
 Nuts, Thread Cutting 254
 Nuts, Valve Cover Hold Down 495

O

O-Ring Set, AC 455
O-Ring to Invert Flare Fitting 347
 O-Ring, Oil Level Sensor 465
 O-Ring, Water Neck 441
OBD-II Interface Module 112
 Odometer Lens 106
Oil Breather Cap 492-493
 Oil Bypass Eliminator 470
 Oil Cap 493
 Oil Catch Tank 470
 Oil Change Decal 213
Oil Cooler Bracket 470
Oil Cooler, Engine 468-469
Oil Cooler, Transmission 575-576
 Oil Deflector, Valvetrain 479
Oil Dipstick 460, 463, 467
Oil Dipstick Tube 460, 467
 Oil Dipstick Tube Seal 466
 Oil Filter Cap Decal 213
 Oil Filter Tube 467
 Oil Filter Tube/Breather 467, 492
 Oil Filter 470-471
 Oil Filter Adapter 465
Oil Filter Bypass Valve 464
 Oil Filter Canister 470
 Oil Filter Connector 465
 Oil Filter Decal 213
 Oil Filter Hoses 464
 Oil Filter Magnets 470
 Oil Filter Prefilter 470

Oil Filter Wrench 471
Oil Filter, Remote 470
 Oil Level Sensor O-Ring 465
Oil Line Block Fitting 169
Oil Line Clip 169
Oil Line Fitting 169
 Oil Pan 460, 462-463
 Oil Pan Baffle 463
 Oil Pan Battery Cable Clip 466
Oil Pan Bolts 463, 466
Oil Pan Drain Plug 465
Oil Pan Drain Plug Gasket 465
Oil Pan Gasket 465
 Oil Pan Seals 465
 Oil Pressure Sending Unit 464
 Oil Pressure Switch Socket 464
 Oil Pressure Wiring Socket 464
 Oil Pump 463, 464
 Oil Pump Bypass Valve Bolt 464
 Oil Pump Cover 464
 Oil Pump Drive Shaft 463
Oil Pump Intake Screen 464
 Oil Pump Primer Tool 456
 Oil Return Screen 484
 Oil Sender Elbow 464
 Oil, Engine 471
Orifice Tube 454
 Ornament Set, Upper Grill 241
 Ornament, Amnest 74
 Ornament, Fender 242
 Ornament, Grill 279
 Ornament, Rally Wheel Cap 396-397
 Ornament, Rear Window 245
 Ornament, Steering Wheel 157
 Ornaments, Wheel 404
 Outer Cowl Panel 694
 Outer Door Handle, Power 215
 Outer Door Mirror 319
 Outer Mirror Mounting Set 321
 Outer Rocker Panel 403
 Outlet, Water 340
 Overdrive Switch Harness Plug 407
 Overflow Fur Cap, Radiator 615
 Overhaul, Steering Wheel 157
 Owner's Manual 185-186
 Oxygen Sensor Fitting 554
 Oxygen Sensor Plug 555

P

Pad, Brake/Clutch Pedal 176
Pad, Clutch Pedal 176
Pad, Convertible Top Pinch Rail 306
Pad, Parking Brake Pedal 176
Padded Seat Cushion 40
 Paint 196-198
 Paint & Body Manuals 188
 Paint Instruction 219
 Paint Mask Set, Wheel 403
 Paint Spray Gun 199
 Paint System, Brake Caliper/Drum 388
Paint Thinner 85
 Paint, Clear Gloss 199
 Paint, Coating 198, 335
 Paint, Engine 196
 Paint, Engine Refinishing 456
 Paint, Exhaust 198
 Paint, Factory Black 197
 Paint, Inspection Undercoating 197
 Paint, Metal-Mimic 197
 Paint, Rubber Undercoating 198
 Paint, Trunk 199, 332
 Paint, Undercoating 335
 Paint, Underhood 199
 Paint, Wheel Coating 199
 Paint, Wrinkle Finish 198
 Pan, Oil 462-463
 Pan, Transmission 572-573
Panel Boards, Quarter Trim 465
Panel Board, Door 92
Panel Rail, Door 70
Panel Skin, Quarter 322
 Panel, Bumper Filler 281
 Panel, Cowl Vent 294
 Panel, Fender Patch 292

Panel, Header 285
Panel, Headlamp Bucket Mounting 260
Panel, Inner Door 57-60
 Panel, Inner Rear Side 301
 Panel, Kick 51
 Panel, License Plate 284
 Panel, Outer Cowl 294
 Panel, Quarter 332
 Panel, Quarter Patch 322
 Panel, Rear Body 332
 Panel, Rear Upper Body 323
Panel, Rear Valve 303
 Panel, Rooster 302
 Panel, Seat Back 41
 Panel, Seat Side 41
 Panel, Tail 332
 Panel, Taillamp Mounting 332
Panel, Taillamp Surround 332
 Panel, Trunk Filler 323
 Panel, Trunk Floor Outer 327
 Panel, Trunk Lid 324
 Panel, Trunk Well 327
 Panel, Upper Rear Filler 323
 Panel, Wheelhouse 323
Panels, Sail 90-91
Panhard Bar Bushing 366
Panhard Bar/Rod 366
 Park Brake Adjustment Nuts 387
 Park Brake Cable Retainer 387
 Park Brake Guide Bar Spring 385
Park Brake Lamp Switch 139
Park Brake Spreader Bar 385
Park Brake, Push Button 385
 Park Mat 191
 Park/Neutral Relay Set 621
 Parking Brake Adjusting Rod 385
 Parking Brake Assembly 174-175
Parking Brake Cable 386-387
Parking Brake Cable Boot 387
 Parking Brake Cable Hardware 387
Parking Brake Drum Lever 385
Parking Brake Pedal Pad 176
Parking Brake Pedal Trim Pad 176
Parking Brake Pulley and Bracket 387
Parking Brake Release Handle 385
 Parking Brake Release Rod Grommet 385
 Parking Brake Switch 385
 Parking Brake Warning Lamp Harness 604
 Parking Lamp 263
 Parking Lamp Bezel 263
 Parking Lamp Housing 264
 Parking Lamp Housing Seal 263
 Parking Lamp Lens 263
 Parking Lamp Lens Gasket 263
 Parking Lamp Socket 264
 Partition, Rear Seat to Trunk 97
 Patch, Repair 335
 PCV Clamp 491
 PCV Hose Clip 491
 PCV Valve Release Handle 491
 PCV Valve Hose 491
 Pedal Assembly 175
Pedal Assembly, Throttle 174
Pedal Brackets, Drive-By-Wire 174
Pedal Bushing, Brakes 177
Pedal Bushing, Clutch 177
Pedal Cover 173, 176
Pedal Pad, Brake 176
Pedal Pin, Brake/Clutch 177
Pedal Pushrod Coupling Nut 177
Pedal, Accelerator 175
Pedals, Brake and Clutch 174
 Pedestal, Gauge Mount 122
Petcock, Radiator 413
Pickle Fork Tool 349
Pignion Connector, Install Set 607
 Pignion Harness, Transmission 607
 Pignion, Alternator 522
Pignion, Blower Motor Resistor 444
Pignion, External Voltage Regulator 492
Pignion, Hill Distributor 522
Pignion, Horn Relay 167
Pilot Bolt, Hood 287
 Pin, Accelerator Pedal Mounting 173
Pin, Brake Pedal Shaft 177
Pin, Door Hinge 313

INDEX, POLICIES & ORDER FORMS

Product Index

INDEX, POLICIES & ORDER FORMS

Pinion Gear Cross Sleeve 370
 Pipe, Coolant Circulator 417
 Pipe, Header Back 556
Piston Cover Upholstery 79
Piston Covers 62, 64, 67, 69
 Pitman Arm 349
 Pitman Arm Nut & Washer Set 348
 Pitman Arm Puller Tool 348
 Pitman Arm Shaft Lash Adjuster Nut 347-348
 Pitman Arms 349
 Pivot Ball Frame Side, Bellcrank 591
 Pivot Ball, Block Side Screw-In 591
 Pivot Bolt, Convertible Top 309
Pivot Pin, Control Lever 151
 Pivot Plate, Remote Mirror 320
 Plate Set, Lower Control Arm 351
 Plate, Carburetor Linkage 543
 Plate, Console Shifter Slider 348
 Plate, Engine Mount 459
Plate, Fuel Pump Block Off 531
 Plate, Fuel Pump Mounting 531
 Plate, Motor Mount 459
 Plate, Seat Belt Anchor 305
 Plates Rub, Convertible Top 305
 Plates, Door Latch Striker 312
 Pliers, Brake Cable 387
 Pliers, Brake Spring 395
 Pliers, Hose Clamp 420
 Pliers, Spark Plug Terminal 508
 Plug, AIR/Smog Tube Eliminator 555
Plug, Alternator Generator Light 522
 Plug, Axle Housing Fill 368
 Plug, Bowl 294
Plug, Door Weatherstrip 300, 326
Plug, Floor Pan 300, 326
 Plug, Instrument Cluster Lens 107
 Plug, Override Switch Harness 607
 Plug, Oxygen Sensor 555
Plug, Plastic Hole 323
 Plug, Positraction Differential Fill 370
Plug, Rear Axle 368
Plug, Speedometer Hold Block Off 585
 Plug, Trunk Lid Drain Hole 324
 Plug, Trunk Pan 325
 Plug, Trunk Pan Floor 325
 Plugs, Door Panel 72-73
 Plugs, Freeze 461
 Plugs, Spark 506
 Plugweld Pliers 334
 PCA Valve Conversion Set 455
 Points, Ignition 501, 504
 Police Package Window Decal 218
 Polish Balls 194
 Positraction Decal 218
 Positraction Differential Fill Plug 370
 Poster 181
 Power Accessory Lead Wire 608
 Power Antenna 134
 Power Antenna Harness 135
 Power Antenna Relay 133
Power Brake Booster 378
Power Brake Booster Check Valve 379
Power Brake Booster Tube 379
Power Convertible, Top Switch Wiring Harness 608
Power Cylinder Mount Set 347
Power Delay, Radio 127
Power Door Lock Conversion Set 614-615
 Power Door Switch 81
 Power Option Relay 618
 Power Seat Feed Wire 608
 Power Seat Relay 49
 Power Seat Rocker Button 49
 Power Seat Switch Base 49
 Power Seat Transmission Housing 49
 Power Seat Wiring Harness 608
 Power Steering Bellows 344
 Power Steering Cap 339
Power Steering Control Valve Cap 345
Power Steering Control Valve Castle Nut 345
Power Steering Control Valve Kit 345
Power Steering Control Valve Seal 345
Power Steering Conversion Box 347
Power Steering Cooler 347
Power Steering Fluid 340
Power Steering Fluid Filter 340
Power Steering Flex Hose 346

Power Steering Hose 342-343
Power Steering Hose Clamp 343
Power Steering Hose Retainer 343
Power Steering Line 343
Power Steering Mounting Stud 340
Power Steering Pulley Nut 341
Power Steering Pump 338-339
Power Steering Pump Brackets 340
Power Steering Pump Fitting 343
Power Steering Pump Pulley 341, 475-476
Power Steering Pump Rebuild Set 339
Power Steering Pump Spacer 340
Power Steering Remote Reservoir 340
Power Steering Slave Cylinder 347
Power Steering Slave Cylinder Bracket 347
Power Steering U-Joint 345
Power Steering Valve 345
Power Tailgate Window Feed Wire 470
Power Tailgate Wiring Harness 606
Power Top & Seat Feed Harness 608
Power Trunk Lock Conversion 618
Power Valve, Carburetor 541
Power Vent Window Conversion Set 617
Power Window & Seat Wiring Harness 616
Power Window Conversion Set 617
Power Window Lock Switch Pigtail 616
Power Window Motor 617
Power Window Motor Adapter 616
Power Window Relay 618
Power Window S-Boots 616
Power Window Switch 81
Power Window Switch Retainer 81
Power Window Wiring Harness 616
Pre-Filter 226
Pressure Gauge Tubing 123
Pressure Plate to Flywheel Bolt 586
Price List, Accessory 221
Printed Circuits, Instrument Cluster 105
Pro Paint Gun 334
Pro-Grimp Tool 509
Proportioning Valve 380-381
Proportioning Valve Bleed Tool 381
Proportioning Valve Brackets 381
Prying & Scraping Tools 541
Pull Strap, Luggage Compartment 329
Pulley and Bracket, Parking Brake 387
Pulley Nut, Power Steering 341
Pulley Reinforcement, Water Pump 438
Pulley Set, Custom 475-476
Pulley, Serpentine Belt 475
Pulley System 475
Pulley, Alternator 521
Pulley, Crankshaft 475-476
Pulley, Idler 435
Pulley, Power Steering Pump 341
Pulley, Serpentine Belt Tensioner 435
Pulley, Smog Pump 555
Pulley, Water Pump 434, 438-439
Pulleys, Idler 476
Pump Water, Electric 434
Pump, Fuel 531
Pump, Oil 463-464
Pump, Power Steering 338-339
Pump, Smog 555
Pump, Water 432-433
Pump, Windshield Washer 296-297
Push Button Set, Door Handle 314
Push Start Decal 218
Pushrod Set, Master Cylinder 376
Pushrod, Clutch Fork 590
Pushrod, Engine 460
Pushrod, Fuel Pump 531
Pushrod, Manual Brake 376
Pushrod, Master Cylinder 376
Pushrods 479

Q

Quad Hi-Lo Harness 260
Quarter Ashtray 145
Quarter Dome Lamp Socket 96
Quarter Glass 236
Quarter Panel 322
Quarter Panel Emblem 206-207
Quarter Panel Exhaust Port 247
Quarter Panel Extension Seal 232

Quarter Panel Louver 247
Quarter Panel Molding 247
Quarter Panel Molding Clip 247
Quarter Panel Skin 322
Quarter Patch Panel 322
Quarter Stick Shifter Cover 581
Quarter Trim Panel Boards 70
Quarter Trim Panel Rails 247
Quarter Window Channel Felt Liners 230
Quarter Window Corner Trim 250
Quarter Window Frame 253
Quarter Window Molding Clip 237
Quarter Window Molding Clips 253
Quarter Window Pivots 239
Quarter Window Roller Guide Washer 239
Quarter Window Seals 230
Quarter Window U-Shape Seal 230
Quarter Window Vertical Molding 230
Quarter Window Vertical Seal 231
Quick Release Battery Cable Bolts 599

R

R12 to R134a AC Retrofit Set 455
Rack and Pinion Conversion 348
Radiator 410-413
Radiator Cap 414
Radiator Cooling Fan 424-426
Radiator Core Support 285
Radiator Fan Shroud Clip 417
Radiator Fan Shroud Fastener 417
Radiator Filler Panel 416
Radiator Hose Adapter 418
Radiator Hose Return 419
Radiator Hose, Molded 418
Radiator Isolators 413
Radiator Mounting Brackets 413
Radiator Overflow Bottle 415
Radiator Overflow Hose 415
Radiator Overflow Hose Retainer 415
Radiator Overflow Jar Cap 415
Radiator Overflow Tank 415
Radiator Petcock 413
Radiator Retainer Pad 413
Radiator Rubber Mounting Pads 413
Radiator Support Brace 285
Radiator Support Bushings 285
Radiator Support Wiring Grommet 285
Radiator to Core Support Mount Bracket 623
Radiator Cooling Fan Relay 427
Radio 124-125
Radio Amplifier 129
Radio Antenna 134
Radio Bezel 126
Radio Color Bug 127
Radio Cup Spacer 127
Radio Delete Plate 104
Radio Faceplate 126
Radio Instruction 120
Radio Knobs 126
Radio Lens 127
Radio Mount, Glove Box 127
Radio Music Adapter 128
Radio Power Delay 127
Radio Screen Protector 127
Radio Shift Nut 126
Radio SiriusXM Tuner 128
Radio Sound System 128
Radio Speaker 129-132
Radio USB Port 128
Rag Joint 345
Rally Wheel Center Caps 396-398
Rally Wheel Hubcap Ornament 396-398
Rally Wheel Lug Nut 399
Rally Wheel Ornament Screw 399
Rally Wheels 396-398
Ramps, Vehicle 191
Rear Armrest Upholstery 78-79
Rear Ashtray Insert 144
Rear Axle 368
Rear Axle Bearing Retainer 370
Rear Axle Bearing Retainer Hardware 370
Rear Axle Bearing Seal 370
Rear Axle Flange U-Bolt 367
Rear Axle Housing Set 369
Rear Axle Lubricant 371

Product Index

Rear Axle Lubrication ID Tag	370	Relay, Fog Lamp	259	Ring, Headlamp Retaining	262
Rear Body Deck Lid Wiring Harness	606	Relay, Fuel Evaporation	533	Ring, Horn	156
Rear Body Lamp Harness	605	Relay, Fuel Pump	533, 537, 621	Riser, Rear Seat	339
Rear Body Panel	332	Relay, Horn	167	Rivet, Door Mirror	321
Rear Body Panel Molding	248	Relay, HVAC/Compressor	606	Rivet, Grill	279
Rear Body Trunk Lid Wiring Harness	606	Relay, Manual TCS	593	Rivets, Cowl Tag	294
Rear Bow, Convertible Top	305	Relay, Multiple Task	609	Rivets, Exhaust Manifold	554
Rear Brake Converter Set	373	Relay, Power Antenna	133	Rocker Arm Locks	479
Rear Brake Hose Tee Fitting	384	Relay, Power Option	619	Rocker Arm Stud	479
Rear Bumper	280	Relay, Power Seat	498	Rocker Arm Stud Girdle	479
Rear Bumper Brace	325	Relay, Power Window	618	Rocker Arms	479
Rear Bumper Cover	280	Relay, Radiator/Cooling Fan	427	Rocker Molding Screw	246
Rear Bumper Filler	281	Rocker Panel	518	Rocker Panel	303
Rear Bumper to Body Seal	232	Relay, Timed Cooling System	621	Rocker Panel Molding	246-247
Rear Compartment Bumper	232-324	Relay, Wiper Motor	296	Rocker Panel Molding Clip Set	250
Rear Control Arm	364	Release Bearing, Hydraulic	589	Rocker Panel Molding Hardware	250
Rear Cove Molding	248-249	Release, Interior Door	85	Rocker Panel Rear Seal	303
Rear Cove Molding Clip	249	Repair Battery Disconnect Switch	620	Rocker Panel Seal	303
Rear Deck Panel Clips	248	Remote Control Battery Disconnect	620	Rocker Switch Panel	621
Rear Door Security Lock Lever	315	Remote Door Opener	614	Rod, Accelerator	172
Rear End Cover Gasket	371	Remote Keyless Entry Systems	317	Rod, Choke	545
Rear End Main Cap Stud	370	Remote Mirror Bezel Retainers	321	Rod, Clutch	590
Rear End Oil Service/Install Kit	369	Remote Mirror Inner Bezel	321	Rod, Clutch Adjustment	591
Rear Filler Panel, Upper	323	Remote Mirror Pivot Plate	320	Rod, Hood Prop	286
Rear Fin Molding Clip Set	250	Remote Start Keyless Entry System	618	Rod, Panhard	366
Rear Floor Brace	302	Remote Starter	137	Rod, Spare Tire Hold Down	330
Rear Frame Supports	367	Remote Starter Solenoid	518	Rods, Door Lock to Latch	318
Rear Intermediate Lamp Harness	606	Remote Starting Switch	456	Roller Pilot Bearing	586
Rear Main Seal	465	Repair Kit, Exhaust	557	Roller Rocker Arms	479
Rear Panel Emblem	207-208	Repair Manual	185	Roller, Input Shaft Gear	585
Rear Panel SS Emblem	209	Repair Patch	335	Roller, Window	239
Rear Panel, Trunk Floor	325	Repair Set, AC Harness	449	Roof Drip Molding	245
Rear Quarter Inner Trim Panel	302	Repair Set, Floor Pan	335	Roof Drip Rail	207
Rear Radio Speaker Cover	465	Repair Set, Trunk	128	Roof Emblem	307
Rear Seal Adapter	465	Repair Set, Turn Signal	152	Roof Rack Mounting Nut	329
Rear Seal Backrest Hooks	37	Repair Set, Washer Pump	297	Roof Rail Weatherstrip	224
Rear Seal Board, Convertible	97	Replacement Keys	318	Roof Rail Weatherstrip Screws	224
Rear Seal Filler Panels	37	Reservoir Remote, Power Steering	339	Rotor, Ignition	500-501
Rear Seal Floor Pan	300	Reservoir, Fuel	423	Rubber Bumper, Window	232
Rear Seal Garnish Molding	37	Reservoir, Clutch Fluid	589	Rubber Stopper, Seat/Hood	40
Rear Seat Pan	301	Reservoir, Remote Clutch	589	Rubber Undercoating Paint	198
Rear Seat Risers	39	Residual Pressure Valve	381	Run Channel, Vent Window	230
Rear Seat Shell	98-99	Resistor Pilot, Blower Motor	444	Rust Removal	195
Rear Seat Shell Jet Padding	97	Resistor, Ignition Coil	427		
Rear Seat to Trunk Partition	97	Retainer Clip, Disc Brake Pad	390		
Rear Side Window Seal	231	Retainer Clip, Speedometer Cable	110-111		
Rear Speaker Bezel	126	Retainer Clip, Vacuum Advance	498	Sail Panel Boards	92
Rear Speaker Enclosure Retainer	128	Retainer Clips, Wiring Harness	623	Sail Panel Clips	92
Rear Stationary Vent Seal	231	Retainer Set, Horn Cap	157	Sail Panel Emblem	207
Rear Upper Arm	366	Retainer, Accelerator Cable	172	Sail Panels	90-91
Rear Upper Body Panel	323	Retainer, Battery Cable	599	Sales Brochure	185
Rear Valance Panels	332	Retainer, Bumper Cover	280	Sash Channel, Door Window	239
Rear Valance Support Brackets	332	Retainer, Column Lock Plate	149	Scraping Tool	255
Rear View Mirror Adhesive	95	Retainer, Convertible Top Boot Well	308	Screen, Grill	279
Rear View Mirror Bracket	95	Retainer, Dusk Vent Valve	317	Screen, Oil Pump Intake	46
Rear View Mirror Mounting Screw	292	Retainer, Door Lock Cylinder	318	Screen, Windshield Washer	298
Rear Wheel Opening Cover Fastener	323	Retainer, Door Lock Pawl	317	Screw Set, Exterior	291
Rear Window Defroster Wiring Harness	603	Retainer, Door Panel	239	Screw Set, Instrument Cluster	104
Rear Window Molding	245	Retainer, Headlamp Bezel	260	Screw Set, Wheel Molding	247
Rear Window Seal	224	Retainer, Remote Mirror Bezel	387	Screw Sets, Interior	73
Rear Window Trim Moldings	92	Retainer, Power Steering Hose	343	Screw, Armrest Base	78
Rear Window Venetian Blinds	190	Retainer, Radiator Overflow Hose	415	Screw, Blower Motor	443
Rebuild Kit, Convertible Top Pump	307	Retainer, Rear Axle Bearing	370	Screw, Blower Motor Resistor	443
Rebuild Set, Brake Master Cylinder	376	Retainer, Rear Speaker Enclosure	128	Screw, Carburetor Float Bowl	543
Rebuild Set, Power Steering Pump	339	Retainer, Remote Mirror Bezel	321	Screw, Choke Thermostat Mounting	544
Receiver Dwyer, AC	454	Retainer, Shoulder Belt	50	Screw, Converter Cover Pan	572
Recovery Tank	415	Retainer, Shoulder Harness	50	Screw, Convertible Top Latch	306
Reducer, Header Collector	452	Retainer, Starter Wire Harness	518	Screw, Door Latch Striker	312
Reflector, Armrest	74	Retainer, Taillamp	274	Screw, Door Plate Seal	110
Reflector, Door Panel	74	Reflector, Taillamp Housing	273	Screw, Door Plate Seal	39
Regulator, Fuel Pressure	537	Reflector, Wheel Brake Shoe	298	Screw, Glove Box	141
Regulator, Window	238	Reflector, Wheel Center Cap	403	Screw, Headlamp Bezel	260
Reinforcement Rails, Convertible Top	303	Retainers, Coil Spring	360	Screw, Headlamp Retaining Ring	262
Reinforcement, Front Bumper	282	Retaining Clip, Inner Door Handle	84	Screw, Heater Box Resistor	444
Relay Block	621	Retaining Pads, Radiator	413	Screw, Mirror Bracket Mounting	321
Relay Panel, Banked	619	Retaining Pin, Brake Shoe	392	Screw, Rally Wheel Ornament	397
Relay Puller Pliers	620	Retaining Ring, Shift Boot	171	Screw, Rear View Mirror Mounting	95
Relay, AC	444	Retractor, Seat Belt	46	Screw, Rocker Molding	246
Relay, Auxiliary Lamp	621	Return Spring, Clutch Fork	590	Screw, Sun Visor Support	93
Relay, Blower Motor	444	Return Spring, Steering Column	149	Screw, Valve Cover	495
Relay, Brake Lamp	621	Return, Throttle Cable	271	Screws/Nut, Headlamp Beam Adjusting	265
Relay, Choke Shutdown	545	Reverse Lockout, Transmission	582	Screws Mounting, Rear Speaker	133
Relay, Electric Fan	428	Ring and Pinion Installation Set	370	Screws, Armrest Base	78
Relay, Electric Water Pump	434	Ring and Pinion Set	370	Screws, Armrest Pad	78
Relay, Fast Idle Cut-Off	533	Ring Gear, Flywheel	587	Screws, Brake Bleeder	381
		Ring, Gauge Mount Angle	122	Screws, Chrome Lens	262

S

Sail Panel Boards	92
Sail Panel Clips	92
Sail Panel Emblem	207
Sail Panels	90-91
Sales Brochure	185
Sash Channel, Door Window	239
Scraping Tool	255
Screen, Grill	279
Screen, Oil Pump Intake	46
Screen, Windshield Washer	298
Screw Set, Exterior	291
Screw Set, Instrument Cluster	104
Screw Set, Wheel Molding	247
Screw Sets, Interior	73
Screw, Armrest Base	78
Screw, Blower Motor	443
Screw, Blower Motor Resistor	443
Screw, Carburetor Float Bowl	543
Screw, Choke Thermostat Mounting	544
Screw, Converter Cover Pan	572
Screw, Convertible Top Latch	306
Screw, Door Latch Striker	312
Screw, Door Plate Seal	110
Screw, Door Plate Seal	39
Screw, Glove Box	141
Screw, Headlamp Bezel	260
Screw, Headlamp Retaining Ring	262
Screw, Heater Box Resistor	444
Screw, Mirror Bracket Mounting	321
Screw, Rally Wheel Ornament	397
Screw, Rear View Mirror Mounting	95
Screw, Rocker Molding	246
Screw, Sun Visor Support	93
Screw, Valve Cover	495
Screws/Nut, Headlamp Beam Adjusting	265
Screws Mounting, Rear Speaker	133
Screws, Armrest Base	78
Screws, Armrest Pad	78
Screws, Brake Bleeder	381
Screws, Chrome Lens	262

Product Index

Screws, Fuse Block	619	Seat Molding Trim	37	Shifter Linkage Rod	583
Screws, Interior	73	Seat Mount Adapter	45	Shifter Rebuild Set	593
Screws, Roof Rail Weatherstrip	224	Seat Mounting Brackets	39	Shifter Rod Retainer Clip	591
Screws, Steering Wheel	159-160	Seat Pivot Cap	37	Shifter Seal	171
Screws, Wiper Transmission Mounting	297	Seat Recliner Mechanism Cover	45	Shifter Support Bracket	592
Scuff Plate, Fender Skirt	293	Seat Recliner Pivot Cover	45	Shifter Tunnel Cover	300
Scuff Puller Tool	394	Seat Side Filler Panels, Rear	37	Shifter, Automatic	580-581
Scuff Set, Fresh Air Duct	445	Seat Side Panel	41	Shifter, Manual Floor	592
Scuff Set, Heater Box	443	Seat Sliders	43	Shifter, Manual Installation Set	592
Scuff Set, Vent Ball	446	Seat Spring Repair Kit	38	Shim, Body Alignment	359
Seal, AC Compression O-Ring	451	Seat Stops	40	Shim, Motor Mount	459
Seal, AC Evaporator Case	454	Seat Support Springs	39	Shims, Body Mount	359
Seal, Air Cleaner Lid	511	Seat Track Release Wire Bracket	39	Shims, Distributor Housing	498
Seal, Air Cleaner Rubber	515	Seat Track Relocation Brackets	39	Shims, Starter	518
Seal, AT Shifter	171	Seat Track Riser Brackets	39	Shock Absorber	362-363
Seal, Clutch Bellcrank Felt	591	Seat Track Springs	40	Shock Decal	218
Seal, Convertible Top Header	225	Seat Tracks	39	Shock Instruction Card	219
Seal, Convertible Top Pump	307	Seat Trim, Bucket Seat	37	Shock Mounting Hardware, Front	263
Seal, Door Jamb Switch	140	Seat Upholstery	22-36	Shop Manual	184
Seal, Engine Valve Stem	479	Seat Upholstery Button	37	Short Hub Adapter	160
Seal, Epoxy Putty	335	Seat Upholstery Foam	36	Shoulder Belt Retainer	50
Seal, Fender Skirt	232, 293	Seat/Shoulder Belt Guide Escutcheon	50	Shoulder Harness Retainer	50
Seal, Firewall Wire Boot	622	Self-Adjusting Drum Brake Conversion	392	Shroud, Fan	416
Seal, Front Splash Pan	232	Self-Locking Hex Nut	254	Shroud, Horn Ring	511
Seal, Glass Installation	224	Sending Unit, Coolant Temperature	435	Shroud, Steering Wheel	156
Seal, Hood to Cowl	232	Sending Unit, Electronic Speedometer	110	Side Cover, Engine	489
Seal, Hood to Radiator	231	Sending Unit, Fuel	123	Side Marker Bezel Gasket, Front	265
Seal, Inner Door Handle	85	Sending Unit, Fuel Tank	530	Side Marker Lamp	265
Seal, Inner Fender	232	Sending Unit, Gear Indicator	122	Side Marker Lamp Bezel	265
Seal, Instrument Housing	105	Sending Unit, Oil Pressure	464	Side Marker Lamp Socket	264
Seal, Oil Dipstick Tube	466	Sending Unit, Temperature	427, 435	Side Marker Lamp Seal	265
Seal, Parking Lamp Housing	263	Sensor, Coolant Temperature	434	Side Marker Lens Gasket	265
Seal, Power Steering Control Valve	345	Sensor, Fan Temperature	427	Side Marker Lens, Rear	265
Seal, Quarter Panel Extension	232	Sensor, Speed	110	Side Molding Tape	245
Seal, Quarter Window U-Shape	230	Sensor, Throttle Position	541	Side Molding, Body	242-244
Seal, Quarter Window Vertical	231	Serpentine Belt	430-431	Side Panel Sets, Interior	52-57
Seal, Rear Axle Bearing	370	Serpentine Belt Pulley	475	Side Panel, Seat	41
Seal, Rear Bumper to Body	232	Serpentine Belt Tensioner	435	Side Window Glass	236
Seal, Rear Main	465	Serpentine Belt Tensioner Pulley	435	Sill Plates, Door	110
Seal, Rear Side Window	231	Service Decal	218, 221	Skf Cap	179
Seal, Rear Window	224	Service Manual, Factory	184	Skirt, Fender	293
Seal, Rocker Panel Rear (Flap)	303	Shaft Centering Sphere, Steering Column	148	Slave Cylinder, Power Steering	347
Seal, Side Marker Lamp	265	Shaft, Control Arm	352	Slave, Disc Brake Caliper Bolt	389
Seal, Steering Column	150	Shaft, Distributor Intermediate	429	Sleeve, Generator Mount	521
Seal, Steering Shaft Coupler	148	Shaft, Trunk Lock Handle	329	Sleeves, Spark Plug Wire	508
Seal, Taillamp Housing to Body	274	Shaved Doors Emergency Entry	615	Sleeves, Tie Rod	350
Seal, Transfer Tube O-Ring	543	Shaved Power Door Handle Set	615	Slip Shaft Driveline	367
Seal, Tunnel Extension	300	Sheet Metal Fastener Kit	334	Slip Check Valve	555
Seal, Wheel Bearing	394	Sheet Metal Tools	300	Smog Diverter Elbow	535
Sealant, Autobody	300	Shelf, Rear Seat	98-99	Smog Pump	555
Sealant, Gasket	478	Shield, Bellhousing Dust	586	Smog Pump Belt	555
Sealant, Caulk	231	Shield, Brake Line	383	Smog Pump Bracket	555
Sealant, Fuel Tank	533	Shield, Fuel Line	555	Smog Pump Hose Clamp	555
Sealant, Seam Exterior	301	Shield, Headlamp	259	Smog Pump Pulley	555
Seals, A-Arm	232	Shields Water, Door	70	Smog Tube Eliminator Plug	555
Seals, Door Hinge Pillar U-Shape	230	Shift Boot and Plate	593	Smog Tubes	555
Seals, Door Lock Pillar U-Shape	230	Shift Boot Bezel	171	Socket Assist	555
Seals, Oil Pan	465	Shift Boot Retaining Ring	171	Socket, Back-Up Lamp	272
Seals, Quarter Window	230	Shift Cable Bracket	583	Socket, Headlamp	259
Seals, Rear Stationary Vent	231	Shift Cable Support Bracket	583	Socket, License Plate Lamp	275
Seam Sealer, Exterior	301	Shift Detent Lever	582	Socket, Parking Lamp	264
Seam Tape	13	Shift Handle Adapter	593	Socket, Side Marker Lamp	264
Seam Adjuster Cover Fastener	37	Shift Handle/Knob	583	Socket, Taillamp	274
Seam Adjuster Spring	40	Shift Indicator Housing	151	Socket, Turn Signal	274
Seam Adjusting Knob	37	Shift Kit	571	Solenoid, Headlamp Washer Drip Valve	259
Seam Back Bumpers	40	Shift Knob Adapter	594	Solenoid, Starter	518
Seam Back Panel	41	Shift Knob, Manual	594-595	Solenoid, TC	593
Seam Back Release Button	37	Shift Lever	582	Solenoid, Trunk Lid Release	541
Seam Belt Anchor Bolt	50	Shift Lever Buttons	592	Solenoid, Trunk Lid Release	324
Seam Belt Adjuster Plate	50	Shift Lever with Button	582	Sound Dampening, Radio	127
Seam Belt Buckle Cover	50	Shift Light	122-123	Sound Deadener	13
Seam Belt Buckle Cover	47	Shift Linkage Bellcrank Bushing	591	Spacer, Air Cleaner	513
Seam Belt Emblem	46	Shift Plate Pattern Emblem	169	Spacer, Alternator	524
Seam Belt Hardware	48	Shift Plate, Console	169	Spacer, Alternator Bracket	324
Seam Belt Hardware Plate	49	Shift Rod Set, Manual Transmission	593	Spacer, Carburetor	543
Seam Belt Information	220	Shifter Arm, Manual Transmission	593	Spacer, Coil Spring	361
Seam Belt Instructions, Sun Visor Sleeve	220	Shifter Boot	170, 583	Spacer, Compressor	451
Seam Belt Retractor	46	Shifter Boot and Ring	583	Spacer, Cooling Fan	422
Seam Belts	46-49	Shifter Bracket	582	Spacer, Kick-Panel Speakers	133
Seam Brackets	43	Shifter Cable	583	Spacer, Power Steering Pump	340
Seam Cushion, Padded	40	Shifter Cable Installation Set	583	Spacer, Radio Cup	127
Seam Frame	38	Shifter Cable, Automatic	582	Spacer, Steering Wheel	160
Seam Headrest Cover	40-41	Shifter Conversion Set	579	Spacer, Thermostat	441
Seam Heater	38	Shifter Handle, Horseshoe	582	Spacer, Wheel	438
Seam Medallion	72	Shifter Lever, Manual	592-593	Spacer, Window Regulator Cam	203

Product Index

Tab, Timing	474	Throttle Assembly	175	Tool, Double Flaring	395
Tach Adapter	109	Throttle Body Base Plate	545	Tool, Electrical Connector Separator	620
Tachometer	109	Throttle Body Base Plate Linkage	545	Tool, Eliminator Rust Remover	334
Tachometer Adapter	497	Throttle Bracket Set	578	Tool, Engine Rotation Adapter	456
Tachometer Bulb	123	Throttle Cable	546	Tool, Fuel Pump Pressure Tester	534
Tachometer Gauge	120-121	Throttle Cable Bracket	546	Tool, Fuel Tank Sender Lock Ring	530
Tachometer Lens	106	Throttle Cable Spring	546	Tool, Funnel	471
Tachometer Noise Filter	120	Throttle Cable Throttle Cable Bracket	546	Tool, Glass Molding Clip Installation	255
Tachometer Wiring Harness	610	Throttle Lever Arm Pinch Bolt	172	Tool, Glove Box Lock Nut	142
Tack Strip Bow Ends, Convertible Top	305	Throttle Pedal Linkage	172	Tool, Harmonic Balancer	477
Tack Strip Bow, Convertible	305	Throttle Pedal, Drive-By-Wire	174	Tool, Headlamp Switch Nut	138
Tack Strip, Convertible Top	305	Throttle Position Sensor	541	Tool, Headliner Upholstery	92
Tag, AC Charge	214	Throttle Position Sensor Cable Bracket	541	Tool, Hose Clamp Pliers	420
Tag, Axle Postraction	218	Throttle Spring Return Set	547	Tool, Ignition Switch Bezel Nut	136
Tag, Distributor	522	Throttle Stud, Carburetor	547	Tool, IR Thermometer	456
Tag, Generator	522	Throttle Valve Cable Bracket	579	Tool, Lockstrip Insert	255
Tag, Rear Axle Lubrication ID	370	Throttle Valve Control Cable	578	Tool, Lug Wrench	330
Tag, Starter	322	Throttle Valve Control Clip	546	Tool, Lug Wrench	330
Tail Fin Corner Molding Clips	251	Tie Rod End	349	Tool, Oil Filter Wrench	471
Tail Panel	332	Tie Rod End Dust Boot	350	Tool, Oil Pressure Switch Socket	464
Tail Panel Brace	332	Tie Rod Sleeve	349-350	Tool, Oil Pump Primer	456
Tail/Lift Gate Weatherstrip	231	Tie Rod Sleeve Bolts	350	Tool, Pickle Fork	349
Tailgate Bumpers and Stops	231	Tie Rod Steering Column	146	Tool, Pitman Arm Puller	348
Tailgate Emblem	208	Tie Rod Straps, Windshield Washer Hose	297	Tool, Plug Weld Pliers	334
Tailgate Handle Cylinder Ring	318	Tilt Steering Column Rag Joint	148	Tool, Pro-Print Gauge	334
Tailgate Latch	329	Tilt Steering Rack Set	150	Tool, Pro-Crimp	509
Tailgate Molding Clip	329	Tilt Steering Tension Nut	149	Tool, Relay Puller Pliers	620
Tailgate Remote Control Clip	329	Tilt Wheel Release Lever	150	Tool, Seal Puller	334
Tailgate Run Channel End	231	Tilt Wheel Turn Signal Switch Harness	541	Tool, Seam Buster Chisel	334
Tailgate Window Channel Filler	231	Timed Cooling System Shutdown	621	Tool, Sheet Metal Fastener	394
Tailgate Window Crank Handle	329	Timing Chain	473	Tool, Side Terminal Battery Wrench	601
Tailgate Window Glass	236	Timing Cover	472-474	Tool, Socket Assist	552
Tailgate Window Regulator Cam	238	Timing Cover Bolts	474	Tool, Spanner Wrench	361
Tailgate Window Glass	236	Timing Light	500	Tool, Spark Plug Gapper	508
Tailgate Window Regulator Cam	238	Timing Light	500	Tool, Spark Plug Hole Thread Chaser	508
Tailgate Wiring Harness	606	Timing Tab	474	Tool, Spark Plug Terminal Pliers	508
Tailamps	266-271	Tire Cleaner	194	Tool, Spark Plug Wire Puller	508
Tailamp Bezel	272	Tire Dressing	194	Tool, Spot Weld Chisel	334
Tailamp Circuit Board	270-271	Tire Hanger	191	Tool, Steering Wheel Puller	159
Tailamp Housing	273	Tire Pressure Decal	217	Tool, Tailpipe Expander	334
Tailamp Housing Retainer	273	Tire Valve Stem	403	Tool, Thread Identifier	456
Tailamp Housing to Body Seal	274	Tire, Decal	216	Tool, Top Dead Center	456
Tailamp Lens Gasket	274	Tire, Spare Well	323	Tool, Trim Removal	255
Tailamp Lens Trimming Ring	274	Tires	409	Tool, Tubing Bender	395
Tailamp Mounting Gasket	274	Tissue Dispenser	105	Tool, Upholstery Installation	36
Tailamp Mounting Panel	332	Tissue Dispenser Emblem	105	Tool, Vise Grip Pliers	334
Tailamp Retainer	274	Toe Board Panel	300	Tool, Weatherstrip	255
Tailamp Sequencing System	271	Toggle Switch	621	Tool, Windshield Guide Roller Nut	239
Tailamp Socket	274	Tool - Bathtub Clip Expansion	255	Tool, Window Molding	255
Tailamp Surround Repair Panel	332	Tool, Glass Seal	445	Tool, Windshield Seal	255
Tailamp Trim Ring/Ornament	272	Tool, Air Conditioning Hose Crimper	445	Tool, Windshield Wiper Arm Remover	195
Tailamp Trim Set	272	Tool, Antenna Nut	133	Tool, Wiper Bezel Nut	240
Tailamp Wiring Harness Extension	605	Tool, Antenna Wrench	133	Tool, Wire Crimping	620
Tailight Panel Trim Moldings	249	Tool, Autoanalyzer Digital Multimeter	456	Tools, Body Dent Removal	334
Tailpipe Expander Tool	557	Tool, Battery Cable Crimping	601	Tools, Prying and Scraping	255
Tank, Radiator Overflow	415	Tool, Battery Carrying Strap	600	Tools, Sheet Metal	333
Tank, Recovery	405	Tool, Battery Charger	600	Top Box, Convertible	408
Tape, Emblem Attachment	215	Tool, Battery Post Cleaning	601	Top Dead Center Tool	456
Tape, Glass Setting	237	Tool, Battery Terminal Spreader/Cleaner	601	Top Pad, Convertible	308
Tape, Insulation	12	Tool, Bearing Packer	370	Top, Vinyl	309
Tape, Side Molding	622	Tool, Bearing Race & Seal Driver	394	Torque Arm	364
Tape, Wire Harness	622	Tool, Brake Adjustment	395	Torque Converter	570
Teddy Bear	178	Tool, Brake Bleeder	395	Torque Converter Cover	572
Tea, Distributor Vacuum	499	Tool, Brake Bleeder Wrench	395	Torque Converter Hardware	570
Tea, Spray Connector	294	Tool, Brake Cable Pliers	387	Torque Converter Lockup Control	570-571
Temperature Control Knob	446	Tool, Brake Cylinder Hole	395	Track Bar Bushings, Rear	366
Temperature Gauge	108	Tool, Brake Pad Spreader	395	Tracks, Seat	382
Temperature Gauge Sender	114	Tool, Brake Proportioning Valve Bleed	381	Traffic Viewer	182
Temperature Sending Unit	427	Tool, Brake Spring Pliers	395	Trailing Arm Bushing	366
Temperature Sending Unit Wiring Set	427	Tool, Brake Spring Removal	395	Trailing Arm Adjustable	364
Temperature Sending Wire Insulation	427	Tool, Bushing Installation/Removal	352	Trailing Arms	364-365
Temperature Sending Fan	427	Tool, Camshaft Installation	456	Transfer Tube O-Rings	543
Tension Spring, Accelerator Pedal	173	Tool, Carburetor Float Adjustment	543	Transistor Ign Amplifier Extension	505
Tensioner, Serpentine Belt	435	Tool, Crankshaft Turning Socket	456	Transistor Ign Amplifier	505
Terminal, Battery Cable	599	Tool, Degree Wheel	456	Transmission Bellhousing Bolt	506
Thermal Intake Vacuum Sensor	511	Tool, Detailing Scraper	211	Transmission Cable Bracket	543
Thermostat	441-442	Tool, Door & Quarter Window Glass Holder	237	Transmission Cable Conversion Set	579
Thermostat Gasket	441	Tool, Door Aligning Bar	334	Transmission Case Drain Plug	585
Thermostat Housing	440	Tool, Door Bushing	334	Transmission Control Cable Bracket	583
Thermostat Housing Bolt Set	439	Tool, Door Hanger Removal	334	Transmission Cover, One-Fitting	575
Thermostat Spacer	441	Tool, Door Hanger	334	Transmission Cooler Mounting Set	576
Thermostat Wire Transmission	877	Tool, Door Hinge Adjuster	334	Transmission Cooling Oil Pan	577
Thermostatic Clock Coil	545	Tool, Door Hinge Pin Popper	334	Transmission Crossmember	569
Thermostatic Oil Cooler Line Adapter	470	Tool, Door Panel	71	Transmission Crossmember Hardware	569
Third Member Gasket	369	Tool, Door Spring	334	Transmission Dipstick	574
Thread Cutting Nut	201, 205, 254				
Thread Identifier	456				

INDEX, POLICIES & ORDER FORMS

Product Index

Transmission Filter Magnet 573
 Transmission Filter, Automatic 573-576
 Transmission Fluid Cooler 573-576
 Transmission Fluid, Automatic 573
 Transmission Fluid, Manual 588-589
 Transmission Gearshift Fork 585
 Transmission Harness 607
 Transmission In-Line Thermostat 577
 Transmission Indicator Lens 107
 Transmission Kickdown Cables 578
 Transmission Kickdown Rod 579
 Transmission Kickdown Stud 547
 Transmission Lever Stud 582
 Transmission Manual 188
 Transmission Modulator Valve 577
 Transmission Mount 569
 Transmission Mount Hardware 569
 Transmission Overdrive Wiring Harness 572-573
 Transmission Pan 573
 Transmission Pan Drain Plug 573
 Transmission Pan Gasket 573
 Transmission Pan, Slam Guard 573
 Transmission Pigtail Harness 607
 Transmission Rebuild Set 571
 Transmission Reverse Lockout 582
 Transmission Shifter Bracket 582
 Transmission TKX & TKO Pigtail Connectors 607
 Transmission, Automatic 582
 Transmission, Manual 584-585
 Tray, Battery 597
 Tremec T-56 Harness 607
 Trim Board, B-Pillar 70
 Trim Panel Rails, Quarter 70
 Trim Panel, Rear Quarter Inner 92
 Trim Plate, Accelerator Pedal 173
 Trim Plate, Brake Pedal 176
 Trim Plate, Clutch Pedal 176
 Trim Plate, Park Brake Pedal 176
 Trim Removal Tool 255
 Trim Ring, Taillamp Lens 272
 Trim Ring/Ornament 272
 Trim Rings, Wheel 399, 404
 Trim Set, Headliner 92
 Trim Tool, Door Panel 71
 Trim, Bucket Seat 37
 Trim, Door Panel 71
 Trim, Kick Panel 51
 Trim, Seat Molding 37
 Tripmeter Reset Knob 109
 Truck Release Switch 140
 Trunk Carpet 330
 Trunk Emblem 207-208
 Trunk Filter Panel 323
 Trunk Floor 326-327
 Trunk Floor Cross Rail 325
 Trunk Floor Outer Panel 327
 Trunk Floor Pan 327
 Trunk Floor Pan Sections 327
 Trunk Floor Rear Panel 325
 Trunk Hinge Arms 324
 Trunk Hinges 324
 Trunk Lamp Assembly 329
 Trunk Lamp Extension Wiring Harness 606
 Trunk Latch 329
 Trunk Latch Bolt 329
 Trunk Lid Catch 329
 Trunk Lid Drain Hole Plug 324
 Trunk Lid Molding 249-250
 Trunk Lid Panel 324
 Trunk Lid Release Switch 324
 Trunk Lid Split Molding 250
 Trunk Lid Torque Rods 324
 Trunk Light Wire Harness 329
 Trunk Lock 317
 Trunk Lock Cylinder Gasket 318
 Trunk Lock Cylinder Pin 317
 Trunk Lock Handle Shaft 329
 Trunk Mats 330-331
 Trunk Mirrors 330
 Trunk Molding 248
 Trunk Molding Clips 250
 Trunk Mount Chassis Harness 317
 Trunk Paint 199, 332
 Trunk Pan Hole Plug 325
 Trunk Pan Plug 325
 Trunk Panel Protector Set 331

Trunk Rack Mounting Nut 329
 Trunk Release Wiring Harness 606
 Trunk Release Wire, Power Remote 618
 Trunk Repair Set 335
 Trunk Side Weatherstrip Channel 324
 Trunk to Wheelhouse Support 325
 Trunk Weatherstrip 231
 Trunk Well Panel 327
 Trunk Wiring Guard Clip 324
 Tube Seal, Oil Dipstick 466
 Tube, AC Muffler Hook Up 455
 Tube, Choke Heat Riser 345
 Tube, Convertible Top Rear Drain 292
 Tube, Heat Riser 353
 Tube, Power Brake Booster 379
 Tube, Smog Extension 555
 Tubing Bender 395
 Turn Signal Assembly 123
 Tunnel Extension Seal 300
 Turbo Heat Shield 567
 Turbo-Jet Horsepower Emblem 210
 Turn Signal Bushing/Rubber Pads 153
 Turn Signal Cables 152
 Turn Signal Cancel Cam Pawls 153
 Turn Signal Cancelling Cam 153
 Turn Signal Flasher 152
 Turn Signal Harness Adapter 153
 Turn Signal Hold Down Bolt 152
 Turn Signal Lever 151, 395
 Turn Signal Lever Knob 153
 Turn Signal Mechanism Ring 153
 Turn Signal Repair Set 152
 Turn Signal Socket 274
 Turn Signal Switch 153
 Turn Signal Switch Connector 153
 Turn Signal Wiring Harness 621
 Turn Signal with Cruise Lever 152
 Turndown, Exhaust 564

U

U-Bolt, Rear Axle Flange 367
 U-Joint 368
 U-Joint, Power Steering 345
 U-Joint, Steering Column 147-148
 Under Dash Courtesy Lamp 107
 Under Dash Courtesy Light Bracket 95
 Under Dash Wiring Harness 604
 Under Seat Floor Brace 329
 Undercutting Cutout 198
 Underhood Acoustic Lining 286
 Underhood Lamp Assembly 290
 Underhood Panel 198-199
 Underlay, Carpet 13
 Upholstery Cleaner 193
 Upholstery Installation Set 37
 Upholstery Installation Tool 36
 Upholstery, Piston Cover 79
 Upholstery, Rear Armrest 78-79
 Upholstery Set, Column 22-36
 Upper Arm Rear 366
 Upper Column Bearing 148
 Upper Column Bearing Set 148
 Upper Control Arm Shaft 352
 Upper Extended Ball Joint 349
 Upper Grill Ornament Set 241
 Upper Radiator Hose 418
 Upper Rear Filter Panel 323
 Urethane Weatherstrip Adhesive 255

V

V-Belt 430-431
 Vacuum Actuator 443
 Vacuum Advance Cover 499
 Vacuum Advance Lockout 498
 Vacuum Advance Retainer Clip 498
 Vacuum Advance Tube 499
 Vacuum Advance, Distributor 498
 Vacuum Canister 449
 Vacuum Cleaner 480
 Vacuum Gauge Lens 107
 Vacuum Line Filter, Headlamp 259
 Vacuum Line, Distributor 498
 Vacuum Pump Set, Electronic 378
 Vacuum Secondary Diaphragm 342

Vacuum Sensor, Thermal Intake 511
 Valance Panel, Floor Front 280
 Valance, Moldings, Lower 241
 Valve AC, Expansion 455
 Valve Core, AC Liquid Bleed 455
 Valve Cover 460, 486-489
 Valve Cover Bolts 495
 Valve Cover Breather 495
 Valve Cover Decal 212
 Valve Cover Elbow 511
 Valve Cover Gaskets 460, 494
 Valve Cover Grommet 491
 Valve Cover Hold Down Nuts 495
 Valve Cover Hold Downs 494
 Valve Cover Screw 495
 Valve Cover Seal Washer 495
 Valve Cover Spreader Bar 494
 Valve Cover Stud 489
 Valve Cover Wire Looms 494
 Valve Spring Compressor Tool 456
 Valve Springs 479
 Valve Stem Cap 403
 Valve Stem, Tire 403
 Valve Tee, AIR Injection Diverter 555
 Valve, Brake Bleeder 381
 Valve, Fuel Tank Vent 528
 Valve, Heat Riser 553
 Valve, Heater Control 442
 Valve, Oil Filter Bypass 464
 Valve, PCV 491
 Valve, Power Brake Booster Check 379
 Valve, Power Steering 345
 Valve, Proportioning 380-381
 Valve, Snose Check 555
 Valvetrain Oil Deflectors 479
 Vanity Mirror, Sun Visor 95
 Vehicle Certification Decal 218
 Vehicle Ramps 190
 Venetian Blinds, Rear Window 190
 Vent Assembly, Kick Panel 51
 Vent Ball Retainer, Dash 446
 Vent Ball Seal Set 446
 Vent Ball, AC 446
 Vent Bezel 51
 Vent Cable, Kick Panel 51
 Vent Center Air Deflector 447
 Vent Crank Handle 83-84
 Vent Glass 235
 Vent Grills, Kick Panel 51
 Vent Hood/Air Mounting Grommet 51
 Vent Pull Knob 446
 Vent Tube, Crankcase 511
 Vent Window Assembly 234
 Vent Window Cover 235
 Vent Window Frame 237
 Vent Window Run Channel 230
 Vent Window Weatherstrip 229
 Vent, AC Air Distributor Duct 447
 Vent, Door Jamb 311
 Ventilation Tag, Crankcase 219
 Ventilator, Axle 368
 Vertical Glass Channel, B-Pillar 229
 Vertical Molding, Window 228
 Vintage Flashlight 182
 Vinyl Adhesive 285
 Vinyl Top 309
 Vinyl Top Cleaner 193
 VIR Eliminator Assembly 454
 Vise, Pliers 334
 Vise, Headlamp 259
 Voltage Regulator Ground Wire 522
 Voltage Regulator Harness 522
 Voltage Regulator Nut 522
 Voltage Regulator Pigtail 522

W

Warning Tag, Generator 213
 Warranty Certificate 220
 Wash System Buckets 190
 Washer Bottle Decal 298
 Washer Bottle Retainer 298
 Washer Cupped, Fender 292
 Washer Jar, Windshield 298
 Washer Lock, Steering Gear 347
 Washer Pump Repair Set 297

Product Index

Washer Pump, Windshield	298	Window Channel, Lower	237	Wire Port, Firewall	622
Washer, AC Flange Pad	451	Window Cover, Vent	235	Wire Separators, Spark Plug	508-509
Washer, Battery Post Feet	599	Window Crank Handle	82-84	Wire Sleeve Protectors	508
Washer, Brake Hose	384	Window Crank Handle Washer	84	Wire Sleeves	622
Washer, Countershaft Gear Bearing	585	Window Crank Handle, Tailgate	329	Wire, AC Compressor Ground	607
Washer, Distributor	498	Window Crank Knob	83	Wire, Accessory	618
Washer, Door Glass Rotler	239	Window Decal	220	Wire, Coil to Distributor Lead	610
Washer, Door Striker	312	Window Deflecter	337	Wire, Convertible Top Rain Gutter	306
Washer, Intake Manifold	485	Window Felt/Anti-Rattle Set	227-228	Wire, Idle Stop Solenoid Control	610
Washer, Quarter Window Roller Guide	239	Window Glass Channel	239	Wire, Ignition Coil	513
Washer, Steering Knuckle Spindle	393	Window Glass Run Channel Tracks	239	Wire, Voltage Regulator Ground	522
Washer, Valve Cover Seal	495	Window Glass, Convertible Top	304-305	Wires, Spark Plug	505-507
Washer, Window Crank Handle	451	Window Glass, Roller Nut Tool	239	Wiring Block, Circuit Breaker	618
Washers, AC Compressor Seal	451	Window Motor, Power	617	Wiring Crimping Tool	620
Water Neck	440	Window Ornament, Rear	245	Wiring Diagrams	186
Water Neck Mounting Bolts	439	Window Pivots, Quarter	239	Wiring Extension, Transistor Ign Amp	505
Water Neck O-Ring	440	Window Plastics, Convertible Top	304-305	Wiring Harness Extension, Front Lamp	607
Water Outlet	440	Window Sticker, New Car	221	Wiring Harness Extension, Taillamp	605
Water Outlet Bolt	439	Window Switch, Power	81	Wiring Harness, J-Strap Clips	623
Water Outlet Restrictors	441	Window Vertical Molding w/Guide	228	Wiring Harness Retainer Clips	623
Water Pump	432-433	Windshield Adhesive Sealant	236	Wiring Harness with Relay, Electric Fan	428
Water Pump Backing Plate Gasket	435	Windshield Glass	234	Wiring Harness, AC Horn Relay to AC	606
Water Pump Bolt	436	Windshield Glass Support	234	Wiring Harness, AC Power Feed	607
Water Pump Bypass Hose	437	Windshield Molding	245	Wiring Harness, Air Conditioning	607
Water Pump Bypass Hose Clamp	437	Windshield Molding Clip	252	Wiring Harness, Back-Up Lamp	606
Water Pump Gasket	435	Windshield Molding Tool	255	Wiring Harness, Breaker to Power Seat	608
Water Pump Hose Outlet Fitting	437	Windshield Pillar Post Weatherstrip	224	Wiring Harness, Chassis	611-613
Water Pump Mounting Bolt	436	Windshield Removal Tool	258	Wiring Harness, Cigarette Lighter	604
Water Pump Pulley	434, 438-439	Windshield Sun Shade	190	Wiring Harness, Clock	609
Water Pump Pulley Reinforcement	438	Windshield Washer Bottle	298	Wiring Harness, Compass Lamp	609
Water Pump Rebuild Set	433	Windshield Washer Decal	213	Wiring Harness, Console	609
Water Pump to Block Gasket	435	Windshield Washer Hose Set	297	Wiring Harness, Convertible Top	608
Water Temperature Lens	106	Windshield Washer Jar	298	Wiring Harness, Courtesy Lamp	97, 609
Weatherstrip Adhesive	229	Windshield Washer Jar Bolt	298	Wiring Harness, Cruise Control	607
Weatherstrip Hook Tool	255	Windshield Washer Jar Bracket	298	Wiring Harness, Dome Lamp	97
Weatherstrip Lubricant	229	Windshield Washer Jar Cap	298	Wiring Harness, Engine	603, 612
Weatherstrip Set, Convertible	222	Windshield Washer Lid Decal	213	Wiring Harness, Front Lamp	602
Weatherstrip Set, Hardtop	223	Windshield Wash Nozzle	297	Wiring Harness, Glove Box Lamp	142
Weatherstrip, Convertible Top Frame	225	Windshield Washer Pump	296-298	Wiring Harness, Headlamp	260, 499
Weatherstrip, Door	226	Windshield Washer Pump Cover	297	Wiring Harness, HEI	149
Weatherstrip, Door J	226	Windshield Washer Screen	298	Wiring Harness, Instrument Cluster	604
Weatherstrip, Door Rail	224	Windshield Weatherstrip	224	Wiring Harness, Kickdown	607
Weatherstrip, Tail/Lift Gate	231	Wiper Arm, Windshield	140	Wiring Harness, Parking Brake Lamp	604
Weatherstrip, Trunk	231	Wiper Bezel Nut Tool	140	Wiring Harness, Power Seat	608, 616
Weatherstrip, Vent Window	229	Wiper Blades	295	Wiring Harness, Power Tailgate	606
Weatherstrip, Windshield	229	Wiper Knob Bezel	140	Wiring Harness, Power Window	608, 616
Weatherstrip, Windshield Pillar Post	224	Wiper Module, Intermittent	294	Wiring Harness, Rear Body Trunk Lid	606
Well Liner, Convertible	308	Wiper Motor Grommet	296	Wiring Harness, Rear Deck Lid	606
Wheel Bearing	394	Wiper Motor Ground Strap	296	Wiring Harness, Rear Window Defroster	608
Wheel Bearing Grease	394	Wiper Motor Relay	296	Wiring Harness, Speaker	613
Wheel Bearing Grease Cap	394	Wiper Motor Wiring Harness	608	Wiring Harness, Speed Warning	610
Wheel Bearing Seal	394	Wiper Switch Bezel Nut	140	Wiring Harness, Tachometer	610
Wheel Bolt Center Measuring Template	403	Wiper Switch Knob	140	Wiring Harness, Tailgate	606
Wheel Center Cap	396-398, 400-407	Wiper Transmission Mounting Screw	297	Wiring Harness, Transistor Ignition Extension	505
Wheel Center Cap Retainer	403	Wire Connector Terminals	623	Wiring Harness, Transmission Overdrive	607
Wheel Cover Decals	403	Wire Grommet	623	Wiring Harness, Trunk Lamp Extension	606
Wheel Cylinder Roll Washer	392	Wire Harness, Distributor	499	Wiring Harness, Turn Release	606
Wheel Cylinder Rebuild Set	392	Wire Harness, Hood Lamp	518	Wiring Harness, Turn Signal	621
Wheel Cylinder, Drum Brake	392	Wire Harness, Retainer, Starter	518	Wiring Harness, Under Dash	604
Wheel Decal	216	Wire Harness, Strap	623	Wiring Harness, Voltage Regulator	522
Wheel Hanger	191	Wire Harness Tap	623	Wiring Harness, Wiper Motor	608
Wheel Lock Instruction Decal	216	Wire Harness Tap, 2-56	607	Wiring Manual	140
Wheel Locks	399	Wire Harness, Steering Column	147	Wiring Pigtail, Blower Motor Relay	444
Wheel Lug Nuts	404-408	Wire Harness, Tremec T-56	607	Wiring Set, Temperature Sending Unit	427
Wheel Molding Service	247	Wire Harness, Trunk Light	329	Wiring, Fuse Panel	613
Wheel Opening Molding	247	Wire Looms, Spark Plug	598	Wrench, Antenna	133
Wheel Ornaments	404	Wire Looms, Valve Cover	404	Wrench, Brake Bleeder	395
Wheel Paint Mask Set	403			Wrench, Oil Filter	471
Wheel Protector	191				
Wheel Spacer	403				
Wheel Spinner Emblem	401				
Wheel Spinners	407				
Wheel Stud	403				
Wheel Trim Rings	399, 404				
Wheelhouse Access Hole Plug	325				
Wheelhouse Panel	323				
Wheelhouse to Quarter Brace	323				
Wheelhouse to Rocker Brace	323				
Wheels	396-398, 404-407				
Windage Tray	463				
Windage, Convertible Top Header Bow	305				
Windance, Door Jamb	238				
Window Adjust Plate	238				
Window Bumper	238				
Window Channel Liner	230				
Window Channel Sets	228-229				

X

X-Pipe, Exhaust	556
X-Tend Rear Suspension System	365

Y

Y-Block, Fuel Line	536
Y-Pipe, Exhaust	556

Z

Zerk Fittings	350
Zinc Anode, Cooling System	427

New Product Showcase

New!

OS2



1966-68 350 High Rise Intake Manifold

Reproduction aluminum high rise intake manifold for 1965-68 Chevrolet full size big block (396/427-375HP) models with special high-performance engines. This reproduction rectangular port, big block intake manifold is manufactured to correct factory specifications and is the manifold found on all original high-performance L78 motors. Features "snowflake" foundry mark, "firing order" casting 18436572 and part #3933163 cast into the manifold.

3933163 1966-68 cast #3933163.... 399.99 ea

OS2 AUTHORIZED



152611



B17053



152612



B17051

1958-66 Full Size Front and Rear Bumpers

OS2 Authorized front and rear bumpers for 1958-66 Chevrolet full size models. These reproduction bumper sets are manufactured to factory specifications and feature triple chrome-plating.

Note: *Except Biscayne and station wagon models.

**Except station wagon models. Shipped double over-size.

Front Bumpers

Part #	Year	Quantity	Price
152611	1958	3 piece	399.99 set
152613	1959	2 piece	499.99 set
153711	1960	3 piece	429.99 set
152921	1961	3 piece	379.99 set
14733	1962	3 piece	389.99 set
B17053	1963	3 piece	399.99 set
B17050	1964	3 piece	379.99 set
B17065	1965	3 piece	399.99 set
B17055	1966	3 piece	449.99 set

Rear Bumpers

152612	1958	3 piece	399.99 set
152922	1959	3 piece	399.99 set
152923	1960	3 piece	399.99 set
153751	1961	3 piece	349.99 set
14734	1962	3 piece	379.99 set
B17052	1963	3 piece	370.99 set
B17051	1964	3 piece	359.99 set
B17057*	1965	3 piece	379.99 set
B17054**	1966	3 piece	469.99 set



1969 Taillamp Lens Set

Reproduction taillamp and back-up lamp lens set for 1969 Impala and Caprice models. Each lens is manufactured in quality injection molded UV stable red and clear acrylic plastic to factory specifications.

Note: Replacement for Caprice models which originally featured an outer stainless steel trim ring.

Impala/Caprice - 4 Taillamps, 2 Back-Up
881271 1969 6 piece..... 126.99 set

OS2 AUTHORIZED



1970 Taillamp Lens Set

OS2 Authorized taillamp and back-up lamp lens set for 1970 Impala and Caprice models. Each lens is manufactured in quality injection molded UV stable red and clear acrylic plastic to factory specifications.

Note: Not for use on station wagon models.

153476 1970 6 piece..... 89.99 set

New!



1963-66 Brake and Clutch Pedal

Reproduction clutch and brake pedal assembly for 1963-66 Chevrolet Impala, Biscayne, and Bel Air models. These perfectly constructed brake and clutch pedal assemblies are manufactured in quality stamped steel construction replicating the original configuration. Brake and clutch pedal assembly contains the pedal assemblies, nylon bushings, spring and retainer clip. Ready-to-install.

Note: The pedal pads are available separately.

Brake and Clutch - Manual Transmission
MT12801P 1963-64 brake/clutch... 199.99 kit
MT80899P 1965-66 brake/clutch... 199.99 kit

OS2 RESTORATION

OS2



3844152

3844159

1964 Impala SS Console

OS2 complete console assemblies for 1964 Impala Super Sport models. This reproduction is designed to replace the entire console unit. Each part is injection molded or die-cast, and assembled for easier installation. Includes: the glove box, SS emblem, console lamp, console door and lock assembly. Automatic console includes the shift indicator assembly for Powerglide, 4-speed console includes the shift pattern emblem and the shifter surround assembly as shown. Fits Impala Super Sport models with bucket seats.

Note: Shipped double over-size.

3844152 1964 automatic..... 619.99 ea
3844159 1964 4-speed..... 619.99 ea

New!

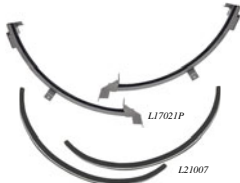
OS2 AUTHORIZED



1959-75 Convertible Header Bow Windlace

Reproduction convertible top header bow lacing for 1959-75 Impala models. Lacing runs along the edge of the convertible top header bow to prevent contact with the top material. Measures 60" long, trim as required.

E232 1959-75 black..... 14.99 ea



1959-63 Convertible Quarter Window Glass Run Channel Tracks

Reproduction quarter window glass run channel tracks for 1959-64 Impala convertible models. These reproduction channels are manufactured from a high-quality steel to factory specifications and include all mounting brackets. Replacement lower quarter window glass run channel felt liners are available separately.

Note: The channels do not include the felt lining.

Channel Tracks

L17016P 1959-60 LH and RH..... 399.99 pr
L17021P 1961-63 LH and RH..... 399.99 pr

Channel Liners

L21007 1959-63 LH and RH..... 88.99 pr



WARNING: Cancer and Reproductive Harm.
www.P65Warnings.ca.gov

CHANGE SERVICE REQUESTED

CALL TOLL-FREE OR ORDER ONLINE TODAY **1-800-854-1280 / classicindustries.com**

Diamond Blue

OEER



FREE
\$20.00



★ **Indoor Use**
★ **Single Layer**



1958-94 Diamond Blue Car Cover

⚠

Designed for indoor use, OEER's Diamond Blue covers are manufactured using an economical single layer non-woven material that offers excellent protection from dust and dirt penetration. Each cover is sewn with double stitched seams to add strength and durability to the cover and Neoprene elastic is sewn into the front and rear hems to help secure the cover. Breathable and lightweight, Diamond Blue offers basic protection from water and guards against damage from dust, dirt, over spray, and similar environmental elements. Covers feature mirror pockets on both sides of the cover when applicable and non-scratch grommets have been installed onto each side of the cover to allow the use of a tie strap or lock.

MT8501A	1958	4 door.....	79.99 ea
MT8502A	1959-60	2 door, 4 door.....	79.99 ea
MT8503A	1961-64	2 door.....	79.99 ea
MT8504A	1965-71	2 door, 4 door.....	79.99 ea
MT8517A	1991-94	2 door, 4 door.....	79.99 ea

New!



320042



320073

1963-70 Map Light Rear View Mirror

Reproduction interior day/night mirror with optional map light for 1963-70 full size models. Reproduced to factory specifications. Each mirror features a rubber cushion edge, polished stainless or black finish, map light and wiring. Mounting screw not included. For mounting screw use #565842.

320044	1963-65	8" stainless.....	84.99 ea
320042	1963-65	8" black.....	84.99 ea
320073	1963-68	10" stainless.....	84.99 ea
320046	1963-68	10" black.....	84.99 ea
320071	1969-70	12" stainless.....	93.99 ea



3917467

3917468

1968 Chevrolet Full Size Headlamp Bezel

Reproduction headlamp bezel designed for use with 1968 Impala, Caprice, Bel Air, and Biscayne models. This quality reproduction is designed to replace the original bezel exactly! Manufactured in quality die-cast zinc featuring a bright chrome-plated finish to replicating the original in quality, design, and fitment.

3917467	1968	LH.....	149.99 ea
3917468	1968	RH.....	149.99 ea

OEER AUTHORIZED



62441
(large duster)

62443
(mini duster)

Pickup Layers of Dust w/One Sweep!

⚠

An easy way of keeping your vehicle clean and free of dust, looking like it was just washed. It's specially treated cotton fibers lift dust off the surface without scratching the paint, even delicate lacquers. The more you use it, the better it works! Regular use can significantly reduce the frequency of washings.

Duster Sets			
62444	large and mini dusters.....	29.99 set	
62447	large & mini w/extra mop heads	42.99 set	

Individual Components			
62441	large duster.....	21.99 ea	
62443	mini duster.....	10.99 ea	

Replacement Mop Heads without Handle			
62445	large mop head.....	8.99 ea	
62446	mini mop head.....	4.99 ea	
62440	2 large, 2 mini mop heads.....	25.99 set	



6456802

1965-66 Speedometer

⚠

Replace the non-functioning original speedometer in your 1965-66 full size models with these. Correct in every detail, these speedometers are manufactured to factory specifications. Features original style markings, warning light indicators, turn signal indicators, odometer assembly and needle. Correctly calibrated and ready-to-install right out of the box.

6408852	1965.....	289.99 ea
6456802	1966.....	289.99 ea