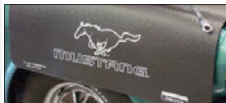


Cool Ways to Protect Your Car!



FC3



FC4



FC5



FC6



FC8



FC9

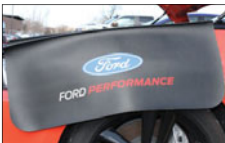
Fender Gripper Fender Cover



Manufactured using a cushion soft, non-slip material, these fender covers will not slide off or move around when in use. They are impervious to motor oil, coolant, brake fluid and will not harm the paint and are easily hand washable. Stylish protection for your Mustang!

Note: Dimensions 22" x 34".

FC3 Mustang logo.....	29.99 ea
FC4 Mach 1 logo.....	29.99 ea
FC5 Cobra logo.....	29.99 ea
FC6 Boss 302.....	29.99 ea
FC8 Bullitt.....	29.99 ea
FC9 Flaming Horse.....	29.99 ea



New! Fender Gripper Fender Cover



Ford Performance fender covers protect that beautiful paint job from scratches, chemicals and oil. These strong, slip resistant fender covers feature a handy "ridged" area in which to place small tools and parts. They measure 27" x 36" and feature the red, white, and blue "Ford Performance" logo.

M1822A7	29.99 ea
---------------	----------



82L316 - installed

1979-04 Full Front End Mask



Premium protection protects against stone chips, road tar, bug stains and other debris. Heavy-duty vinyl, soft cotton backing and non-fluttering design make this bra the finest available. Covers the forward section of hood, fenders, grill, and bumper area, but allows hood to open without removing bra.

82L302 1979-84 without spoiler	129.99 ea
82L308 1987-93 LX	120.99 ea
82L309 1987-93 GT	120.99 ea
82L300 1993 Cobra.....	129.99 ea
82L311 1994-98 Cobra.....	129.99 ea
82L317 1999-01 Cobra.....	120.99 ea
82L316 1999-04 LX, GT.....	129.99 ea
82L320 1999-04 Saleen.....	113.99 ea
82L328 2003-04 Cobra.....	129.99 ea



1994-04 Mirror Mask



Custom fit mirror bras made of grained, heavy black vinyl with soft cotton backing to match our front end bra. Securely attaches to mirrors with hidden Velcro tab and sewn-in elastic cord. Sold in pairs for all 1994-04 Mustang models.

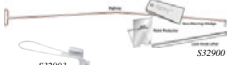
82L312 1994-04.....	77.99 pr
---------------------	----------



1999-04 Paint Protector



Die-cut static cling paint protectors will keep your Mustang show ready all the time. A perfect fit and nearly invisible. Sold in pairs. 11" tall by 17" wide. 97L312 1999-04..... 18.99 set



S32903

S32900

Lock-Out Tool Set



The BigEasy tool set will allow you to actuate the lock buttons, door handles, or lock knobs on most vehicles with no special training required! The rod measures 55" long and is powder coated in high visibility pink. Set also includes non-marring wedge, paint protector, and a lock knob lifter. We also offer the BigEasy Loop, which attaches to the BigEasy rod to provide a flexible, yet strong, noose for window cranks and door handles. Carrying case sold separately.

S32900 BigEasy tool set.....	36.99 set
S32903 BigEasy loop attachment.....	9.99 ea
S32935 BigEasy carrying case.....	29.99 ea

New!



Hidden Car Tracker Pro Plus



Track your vehicle easily with the BrickHouse Hidden Car Tracker Pro Plus, a completely covert GPS tracker.

This powerful tracker puts you in total control of individual vehicles or fleets, and drivers will never know it's there unless you tell them. Enjoy an unlimited power supply while the vehicle is running and, when the vehicle is off, the internal back-up battery continues to provide location data for up to 12 hours - ideal for recovering stolen or lost vehicles.

- Hard wired, no batteries required
- Location updates every 10 seconds
- External antenna for superb accuracy
- 12 hour continuous back-up battery

Through BrickHouse Security's easy to use GPS platform, you can receive instant speed or location based alerts via text or e-mail, based on custom parameters. View the tracker's location in real time on three customizable map views, or access detailed location history reports. All of these features can be accessed from any smartphone, tablet, or computer with an internet connection; no special apps or software are necessary. This device requires a \$29.99 per month fee for unlimited GPS tracking, billed every 30 days (billing starts 7 days after purchase).

Note: If service is inactive for 60 days or more reactivation will require a new SIM card for your device and may take up to 3 business days.

A9200103	164.99 ea
----------------	-----------

Make Sure Your Vehicle is Safe and Secure!

New!



TrackPort GPS Vehicle Tracker

The TrackPort is the easiest way to track a car or truck, and protect it against thieves. Just plug the device into your vehicle's OBD-II (On Board Diagnostic) port. Normally located under the driver side dash, this port has been standard on all vehicles sold in the United States since 1996. Use your vehicle's existing port to supply uninterrupted power to your tracking device. Unlike traditional hard-wired tracking devices, an OBD GPS tracker can be easily moved from one vehicle to another with no tools and little effort. It's completely "Plug and Play".

- No installation required, just plug in and go
- Move TrackPort instantly from vehicle to vehicle
- Location updates every 30 seconds
- Powered by your vehicle - no batteries needed
- U.S. tracking only

Know where the TrackPort is at any time, view where it's been, and run reports on the vehicle's behavior from any computer, tablet, or smartphone with a web connection. Receive customizable location or speed based alerts via text message or e-mail. Purchase of this device constitutes agreeing to the monthly service fees chosen upon sale. The TrackPort requires a \$29.99 per month fee for unlimited GPS tracking, billed every 30 days (billing starts 7 days after purchase).

Note: If service is inactive for 60 days or more, reactivation will require a new SIM card for your device and may take up to 3 business days.

A9200102	Trackport	54.99 ea
A9200113	Trackport 3.0	99.99 ea

New!



Micro GPS Hidden Car Tracker

The BrickHouse Livewire Micro is a high-performance GPS tracker that's completely invisible in any car or truck - and it's one of the most affordable GPS devices available. This completely covert GPS tracker is hard wired behind your dashboard, so the driver will only know it's there if you choose to tell him. And since it gets its power from your vehicle's electrical system, you never have to worry about running out of battery life. When the vehicle is turned off, the Micro provides location updates every hour. Detailed reports of a vehicle's travel history are also available. For the most accurate tracking available, the Livewire reports location on the Verizon network, which offers the best cellular coverage in the United States. Device supports rapid tracking, Geofence alerts, and speed alerts with select service plans.

Note: This device requires a no contract service plan, available from \$9.99 to \$39.99 per month.

A9200112		114.99 ea
----------	--	-----------

New!



LED False Alarm

Deter auto theft with a "flashing red LED" that gives the appearance of a sophisticated alarm system at a fraction of the cost. In minutes the battery operated Guardian 3000 can be installed anywhere on the dashboard.

G3000		19.99 ea
-------	--	----------



Security System w/Remote Starter



Electric Life full featured security system with remote start. Both the alarm and remote operate through the remote from as far away as 600 feet. The included 5 button remote features 2 auxiliary channels in addition to controlling the remote start, keyless entry (lock/unlock), and trunk release functions. Other features include remote controlled anti-car jack, panic with smart lock/unlock, and lighting controls. Available with or without the 2 way FM receiver option. The 2 way FM receiver can send and receive commands while monitoring alarm and engine operations.

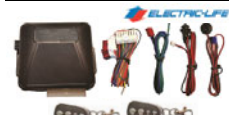
EL95700		152.99 ea
EL95730	with FM receiver	242.99 ea



Remote Alarm System

Stand alone premium alarm system from Electric Life. This kit includes two 4 channel wireless remotes with three additional auxiliary outputs. It features dual zone shock sensors, starter disable, R.F. lockout, and a 120 db 6 tone alarm.

EL95710		164.99 ea
---------	--	-----------



Remote Keyless Entry System

Remote keyless entry system from Electric Life. This simple system features two 4-button remote transmitters with designated lock and unlock buttons, and auxiliary channels for trunk release, power windows, remote start, or a multitude of other options. These systems will integrate with any vehicle equipped with factory or aftermarket power door locks.

EL95121	add-on alarm	79.99 ea
---------	--------------	----------



Remote Starter System with Keyless Entry

Stand alone remote starter kit with keyless entry from Electric Life. This kit includes two 5 button wireless remotes, a built-in parking light relay, a plug-in override switch, true RPM sensing, reliable smart engine run sensing, and a programmable cold start timer. They feature a factory transponder by-pass, a starter disable, two ignition relay outputs, and a stop feature. This system will get your engine and passenger cabin up to temperature increasing your vehicles reliability, performance, and comfort.

Note: For automatic transmissions only.

EL95600		149.99 ea
---------	--	-----------



Alarm and Remote Start Upgrades for Keyless Entry Systems

Universal add on alarm from Electric-Life. These alarms can be integrated with your current keyless entry system to create a full vehicle security system. The built-in lock/unlock outputs can be tied directly into the keyless entry system on nearly any vehicle. This is a great option for vehicles already equipped with a factory or aftermarket remote entry system.

EL95715	add-on alarm	73.99 ea
EL95720	add-on remote start	119.99 ea

Starter-Stop Anti-Theft Device

The Starter-Stop is a low cost theft protection device that disables the vehicles ignition. This works with virtually all 12V vehicles. Simply wire it into any on/off switch in your vehicle and that will become your personal kill switch. It automatically arms when the ignition is turned off. There are no batteries to wear out, no annoying siren and no transmitters to lose.

14070		21.99 ea
-------	--	----------



WARNING: Cancer and Reproductive Harm - www.P65Warnings.ca.gov

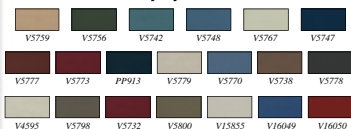
Interior Paints and Body Markers



Steel and Plastic Colors



Vinyl Dye Colors



Aerosol Interior Paint and Dye

Formulated specifically for hard plastic and metal interior components, this acrylic lacquer interior paint is packaged in 16 oz. aerosol spray cans (net wt. 12 oz.). Each color has been expertly color matched. Paints feature extra high pigment content for superior coverage, and patented fan pattern nozzle for professional results.

Note: Shipped ground only, within the continental U.S. only.

Interior Paint for Steel and Plastic

Important: Not for use on vinyl.

PP945	1965-66	light ivy gold metallic	26.99 ea
5770	1967-68	dark blue metallic	14.99 ea
PP916	1967-68	dark saddle	26.99 ea
PP930	1969-73	white	26.99 ea
PP935	1971-73	medium blue	26.99 ea

Interior Vinyl Dyes

Formulated specifically for vinyl interior components, this vinyl dye is packaged in 16 oz. aerosol spray cans (net wt. 12 oz.).

Important: Not for use on hard plastic or steel. Due to variances in factory vinyl material, paint could have up to a 10% variation color difference from original.

PP942	1964-66	palomino metallic	26.99 ea
V5756	1965-66	medium ivy gold	14.99 ea
PP940	1965-68	light turquoise metallic	26.99 ea
PP946	1965-68	light blue	26.99 ea
V5767	1965-68	white	16.99 ea
V5747	1965-70	medium blue	14.99 ea
PP912	1966	medium ember metallic	26.99 ea
PP910	1966-67	dark red metallic	26.99 ea
PP913	1966-68	dark turquoise	26.99 ea
PP922	1966-68	parchment metallic	14.99 ea
V5770	1967-68	dark blue metallic	14.99 ea
V5738	1967-68	dark saddle	14.99 ea
V5778	1967-68	light ivy gold	14.99 ea
PP918	1967-68	light parchment	26.99 ea
V5798	1968	dark nugget gold	14.99 ea
V5732	1968-69	dark red metallic	14.99 ea
PP925	1968-69	nugget gold	26.99 ea
V15855	1969-73	white	14.99 ea
V16049	1971-73	medium blue	16.99 ea
V16050	1971-73	medium vermillion	14.99 ea



Chassis Inspection Mark Paint

Restore the many colored factory marks found on your suspension, engine and driveline components. These marks are found on most vehicles, and were used for inspection, parts picking codes and alignment marks. These inspection paints are color matched to original. In many cases they're supplied with technical bulletins to help you apply them in the proper locations. Supplied in 2 oz. brush top bottles.

PM03101	dark blue	9.99 ea
PM03102	bright yellow #1	9.99 ea
PM03103	white	9.99 ea
PM03104	orange #1	9.99 ea
PM03105	green #1	9.99 ea
PM03106	dark green #2	9.99 ea
PM03107	red	9.99 ea
PM03108	spindle orange	9.99 ea
PM03109	pitman arm blue	9.99 ea
PM03110	lavender	9.99 ea
PM03111	orange #2	9.99 ea
PM03112	green #3	9.99 ea
PM03113	orange #3	9.99 ea
PM03114	yellow #2	9.99 ea
PM03115	light blue	9.99 ea
PM03116	dark blue	9.99 ea
PM03118	crossmember orange	9.99 ea
PM03120	purple	9.99 ea
PM03121	dark green	9.99 ea
PM03122	bright green	9.99 ea
PM03123	gray	9.99 ea
PM03124	blue	9.99 ea
PM03125	pink	9.99 ea



Firewall and Frame Marking Crayons

These are the correct "grease pencil style" crayons used for marking the factory inspection marks on your firewall, subframe, and other various sheet metal areas. Included are a yellow and a white marking crayon.

K0084		7.99 pr
-------	--	---------



Frame Engine and Body Marker

Automakers use these permanent markers to write codes and numbers on frames, engines and body components. Engine suffix codes were often written on the back of the cylinder heads. Job numbers were written on the firewall, frame, engine, and other components to assure the correct vehicle was being built according to the build sheet. These permanent paint markers will help you exactly duplicate the factory original marks.

PM0301	white	6.99 ea
PM0302	green	6.99 ea
PM0303	orange	6.99 ea
PM0304	red	6.99 ea
PM0305	yellow	6.99 ea

MOTHERS® – High-Performance Car Care Products



California Gold Clay Bar Set

The clay bar system has been a closely guarded secret of professional detailers for many years. Until now they have had nearly exclusive access to this technology. Now Mothers® makes it available to you so you can gain the benefits of the system, saving time and money. Everything you need is included in this box: one 80 gram Mothers® California Gold Clay Bar (clay bar) and one 4 ounce bottle of California Gold® Original Formula Liquid Carnauba Wax to provide long-lasting protection.

M07240 25.99 set

California Gold Original Formula

Paste Wax

Genuine Brazilian Carnauba wax combined with cleaners is the secret to a superb shine and incredible protection. Original formula is created with Carnauba wax, top of the line cleaners, the highest quality polishes and finish restorers. Works great on cars, trucks, motorcycles, and airplanes. Is safe for clear coats. Gives the shine you would expect from a paste wax and is easy to use.

M05500 12 fl. oz. 16.99 ea

California Gold Natural Formula

Paste Wax

This natural formula wax contains Carnauba wax and just enough modern chemistry to let you easily apply it, remove the light haze and enjoy the most spectacular shine you will ever experience. For a truly brilliant shine, accept no substitute.

M05550 12 oz. paste 21.99 ea

Mothers® Mag & Aluminum Polish

Mothers' secret formula is world renowned for providing the easiest, brightest shine for aluminum wheels, manifolds, valve covers, brass trim, all alloy parts and accessories. Tough enough to tackle the most neglected metals, yet gentle enough to use every day.

M05100 5 oz. 8.99 ea
M05101 10 oz. economy size 11.99 ea



California Gold Car Wash

Cleans and shines like only Mothers® can. This ultra sudsy car wash contains detergent strong enough to wash away dirt, road film, bugs, bird droppings, and other contaminants, yet its exclusive PH balanced formula will not remove wax and resists water spotting.

M05600 16 oz. 6.99 ea
M05632 32 oz. economy size 8.99 ea

California Gold Pre-Wax Cleaner

Cleans like only Mothers® can. See incredible results on clear coat paints, lacquers, enamels, pearls, candies, urethanes and all other paint types. Prepares paint for waxing or glazing by removing oxidation, dirt, stains, and old wax. Restore color and luster to your paint with Mothers® Pre-Wax Cleaner.

M07100 16 fl. oz. 7.99 ea

California Gold Sealer & Glaze

Enjoy the ultimate brilliance of a show car shine on all paint types and colors including clear coats, blacks, reds, and candies. Fills and hides scratches, swirl marks, and spider webbing. Formulated to achieve spectacular, professional results by hand or with a buffer. Will not streak, smear or fingerprint and may be used over existing wax.

M08100 16 fl. oz. 9.99 ea

California Gold Natural Formula Liquid Wax

This natural formula wax contains Carnauba wax and just enough modern chemistry to let you easily apply it, remove the light haze and enjoy the most spectacular shine you will ever experience. For a truly brilliant shine, accept no substitute.

M05750 16 fl. oz. 14.99 ea



California Gold Carnauba Cleaner Wax

The alternative to paste wax is this terrific liquid wax with cleaner. It contains Brazilian Carnauba for spectacular shine and state-of-the-art chemical film formers to lock in durable protection. Great for all paints. Restores color, removes oxidation and is detergent resistant. Safe for clear coats too.

M05701 16 fl. oz. 8.99 ea



Carpet & Upholstery Cleaner

Carpet & Upholstery Cleaner is a must for removing stubborn dirt and stains from velvet, vinyl, cloth, carpets, and sheepskin covers. Safe and effective on all automotive fabrics, yet works great for home use too. This special formula is designed to get out some of the toughest dirt you'll find. Even works great on grease, gum, and stains caused from mud.

M05422 22 fl. oz. 9.99 ea

Preserves Protectant

Provides preservation and protection for 30 days. This unique formula penetrates and bonds to block out the harmful effects of ultraviolet rays, ozone, smog and contaminants to protect, rubber, vinyl, plastic, and fiberglass. It beautifies and protects tires, bumpers, vinyl tops, dash boards, window trim, seats, household items, sporting goods, and just about everything else.

M05316 16 fl. oz. 11.99 ea

Regular Formula Wheel Mist

Rusty rims? Oxidized bumpers? Don't worry Mothers® will clean it up for you. The original, one step wire and mag wheel cleaner, formulated for chrome and rough cast aluminum. No scrubbing or elbow grease needed. Simply spray on and hose off dirt, oxidation, rust and brake dust for the best shine and the ultimate sparkle. Works great on chrome bumpers, side pipes or any hard to clean bright metal surface.

M05824 24 fl. oz. 7.99 ea



Mothers® PowerBall

Mothers® PowerBall is the first foam polishing tool designed to revitalize billet, diamond plate, polished aluminum, stainless steel, plastic lenses, convertible top windows, and much more. When used with Mothers® PowerMetal polish, the power ball is ideal for any uncoated, polishable metal finish. Its unique and durable construction compresses to fit tight spaces, so polishing difficult, intricate metal work to a mirrorlike finish is fast and easy.

M05140 PowerBall 31.99 ea



Chrome & Glass

Cleaner/Protector

Ideal for cleaning and protecting windows, mirrors, bumpers, wheels and chrome trim. Leaves surfaces clean and streak free. Unique protecting agents resist smears and fingerprints.

M05208 12 fl. oz. 7.99 ea



Mothers® Back-to-Black

Renews and protects all exterior trim. Perfect for all vinyl, rubber, plastic, flat finishes, yet surfaces need not be black to achieve superior results. Works incredibly well on both smooth and textured surfaces, bumpers, protective and decorative moldings, lower, air vents, window trim, and wiper arms. After applying, surfaces look new again and will be protected against further oxidation or deterioration caused by harsh elements. To get back to beauty, get Back-to-Black.

M06108 8 fl. oz. 9.99 ea



CAR CARE PRODUCTS

Professional Products For The Car Enthusiast!

Professional Products for the Car Enthusiast!

Professional grade car care detailing supplies are no longer just for professionals. We are pleased to offer our complete line of car care products for the auto detailing professional and/or classic car enthusiast. Now you can purchase industrial strength, commercial car care products in consumer friendly 16 oz. bottles, and you too can achieve the amazing results that only a detail professional using professional grade products can achieve. If you detail your vehicle often, take advantage of our bulk packaging and purchase your favorite products by the gallon! If you are tired of paying for expensive bottles with colorful labels and achieving mediocre results, then do your car's delicate finish a favor and order our professional car care products today. We offer the highest quality car care formulas at any price, without the hype of expensive advertising and high dollar packaging. No fancy bottles, labels or advertising to pay for, the product speaks for itself!



**Exclusive Formulas
Not Available In Stores!**

Secret Formula Wash and Wax Products

Super Suds High Foaming Car Wash **New!**

This super suds thick, high foaming shampoo is formulated for extra duty cleaning. Chelating agents counteract hard water mineral deposits while foam stabilizers provide longer lasting sudsing action than regular duty shampoos. Its pH balanced to gently clean surface, but not remove existing wax or polymer coatings. Concentrated 100:1 for economy. Available in grape or cherry fragrance. Biodegradable, phosphate-free, NPE-free, VOC compliant.



K89513

K89512	grape	1 gallon	18.99 ea
K89513	cherry	1 gallon	17.99 ea

Reflect-It Correction Creme and Swirl Eliminator Polish **New!**

This light cut correction creme restores depth of gloss and color while leaving a surface free of swirls or compound haze on all types of paint finishes. Formulated using an advanced blend of diminishing, micro synthetic silica abrasives, Reflect-It™ quickly removes 2000 - 3000 grit sand scratches, cobweb scratches, swirl marks, water spots, and other paint imperfections. Swirl eliminator is a ultra gloss polish uses extremely fine polishing agents to eliminate swirl marks and hairline scratches while preparing a blemish free surface for final finishing. Provides longer buffing time to create an exceptionally high gloss, glass-like appearance. Safe for all types of paint finishes.

For hand or machine use. Contains no wax.

Reflect-It Correction Creme - Final Step - Light Cut			
K89514	16 oz.		12.99 ea
K89518	1 gallon		48.99 ea
P21 Swirl Eliminator			
K89533	16 oz.		10.99 ea
K89534	1 gallon		35.99 ea

New!



K89477



K89448

OER® "Secret Formula" Clay Bar System

Clay pulls out all the contaminants you cannot see, but that you can definitely feel, like industrial fallout, rail dust, and brake dust. Though these contaminants are not visible, you can tell they are there because the paint will feel rough or gritty. These contaminants may cause patches of paint to appear dull, even after waxing. As these contaminants oxidize, they create rust spots within the paint. Once this happens, the oxidation is considerably harder to remove and will most likely take a good bit of paint with it. Clay bar will remove these contaminants and leave the surface silky smooth with a mirrorlike smooth finish. One premium professional duty bar is enough to do 8-10 vehicles. Our clay will not break or deteriorate into small particles like inferior low quality clay bars. Super elastic to remove harmful particles quickly and effectively. Acts as a magnet to foreign particles, literally pulling the paint fouling grime away from the surface of the paint. Clay lubricant is essential to the performance and safety of clay. It provides the necessary slick surface for clay to glide on. Using low quality clay lubes or cheap detail sprays will deteriorate your bar and lead to poor clay bar performance. Also beware of soapy water as a clay lube; detergent or surfactant based soaps will cause the clay to deteriorate.

Light Duty for Regular Everyday Use			
K89477	blue block	200 grams	19.99 ea
Heavy-Duty for Heavy Oxidation			
K89448	red block	200 grams	19.99 ea

New!



K89506

K89505

QUICKSPIFF Spray Wax/Clay Bar Lubricant

QUICKSPIFF is a high lubricity spray wax designed to easily remove dust, smudges, fingerprints, and dirt from an exterior surface of a vehicle. It cleans and polishes paint, glass, chrome, plastic, and rubber in one quick step. Just spray and wipe! You will be impressed with the total ease of use, and the slick shiny gloss it leaves on the paint and glass without any streaks or smears! It can be used as a quick spray wax or a clay bar lubricant. Comes in a 32 oz. bottle or 1 gallon jug.

K89505	32 oz. bottle	13.99 ea
K89506	1 gallon	19.99 ea

New!



K89508

K89507

PL23 "EcoGlo" Waterless Wash and Wax

EcoGlo is a Waterless Wash and Wax that will easily clean, shine, and protect your vehicle in one step - without water! Now wash your vehicle anywhere, anytime, without use of water (no hose, bucket, mitt, water blade). Great for washing in severe cold conditions, areas with water bans or restrictions and just to conserve water! Comes in a 32 oz. (one quart) spray bottle or 1 gallon jug.

K89507	32 oz. bottle	24.99 ea
K89508	1 gallon	54.99 ea

Professional Products For The Car Enthusiast!

New!



Black Beauty Paint Sealer and Wax

One-step color brightener and sealer, specially formulated for black and other dark color paints. Quickly and effectively removes fine swirl marks and cobweb scratches, while leaving a darker, more reflective finish. Contains amino functional silicones and Carnauba Wax for long term, high gloss protection. Safe for all types of paint finishes. For hand or machine use. Available in a 16 oz. pint bottle or 1 gallon. **VOC COMPLIANT.**

K89535 16 oz. bottle..... 9.99 ea
K89536 1 gallon..... 34.99 ea

New!

Plastic Polish and Headlight Restorer

Fantastic Plastic Polish/Headlight Restorer restores, revitalizes, and protects while removing yellow film, cloudy streaks, hairline scratches, haze and halos from clear, smooth plastics. Excellent on headlight covers, taillight lenses, bug deflectors, instrument covers, convertible top windows and motorcycle windscreens. Protects against UV rays. For hand or machine use. Available in 16 oz. pint size bottle. **VOC compliant.**

K89528 16 oz. bottle..... 12.99 ea



DER® Premium Carnauba Pre-Softened Wax

DER® Secret Formula Pre-Softened Carnauba Paste Wax is in a class all its own. A pre-softened paste wax with no cleaners, it leaves a deep, brilliant long-lasting shine. It protects and beads up with a glass like gloss that lasts up to 6 months. It works beautifully on all colors, even on blacks, reds, and burgundies, filling in swirl marks. It's also super easy on and off: just wipe on in a circular motion, and take off with a microfibre immediately. No need to wait for it to dry! Leaves no white haze at all, there is no white residue to clean out of the cracks, and no need to be careful around the exterior trim – it won't leave white marks! There's no trade-off here: the easiest application in the world, and the best result! Great grape smell. For the enthusiast who demands the highest and wettest level of shine, DER® Secret Formula Pre-Softened Carnauba Paste Wax is a premium blend of genuine Carnauba wax and natural oils that makes paint "drop off of your vehicle" with a high gloss shine and shimmer that is sure to impress even the toughest critics. The 5" round microfibre applicator pads make it easy to apply waxes or rubbing compounds without scratching paint or clear coat. Simply rinse and reuse. Microfibre applicators are highly absorbent, strong yet gentle and the fabric is machine washable.

K89622 15 oz. can..... 33.99 ea
K89623 20 oz. can..... 39.99 ea
K89828 5" microfibre applicator..... 2.99 pr

New!

P35Q Sealer Wax – Satin Creme

This connoisseur quality final finish sealer/wax combines the long-lasting protection of an acrylic polyurethane resin with the high clarity and gloss qualities of Brazilian Carnauba Wax. Formulated for easy application and removal on all types of pre-cleaned paint finishes. Apply by hand or machine. Available in 32 oz. size. **VOC Compliant.**

K89526 32 oz. bottle..... 25.99 ea

New!



Butter Wet Wax Creme Liquid Carnauba

Wax your classic with brand new technology! OUR PRO butter wet wax creme liquid Carnauba utilizes new technology in its special blend of polymers, resins, and natural carnauba. PRO Butter Wet Wax Creme Liquid Carnauba will leave your car shining like it's still wet!

- Shines and polishes with no cleaners or abrasives
- Will not stain plastic or rubber
- Easy application either in the sun or shade
- Easy to use in hot or cold climates
- Shows best on darker colors, but works great on all colors
- Offers long-lasting protection, it also brings out the deep shine and luster of all colors
- Slippery non-stick protection and gloss

Available in your choice of 16 oz. bottle or buy the professional sized gallon jug and save!

K89603 16 oz. bottle..... 9.99 ea
K89604 1 gallon..... 39.99 ea

New!



Cherry Liquid Finishing Wax

Wax your vehicle with brand new technology! PRO Cherry Finishing Wax Liquid Carnauba Creme utilizes new technology in its special blend of polymers, resins and natural Carnauba. Our PRO Cherry Wet Wax Creme Liquid Carnauba will leave your vehicle shining like it's still wet!

- Shines and polishes with no cleaners or abrasives
- Will not stain plastic or rubber
- Suitable for easy application either in the sun or shade
- Easy to use in hot or cold climates
- Polishes and protects in one operation
- Gently removes fine scratches, buffer marks and light oxidation
- Natural oils restore gloss and enhance depth
- Imported waxes and copolymers offer long term, high gloss protection
- Safe for all paint finishes with a pleasant cherry scent
- For hand or machine use
- Offers not only long-lasting protection, it also brings out the deep shine and luster of all colors
- Slippery non-stick protection and gloss

Available in your choice of 16 oz. bottle or buy the professional sized gallon jug and save!

K89624 16 oz. bottle..... 9.99 ea
K89625 1 gallon..... 39.99 ea

New!

DER® "Secret Formula" Acryli-Shine Glaze

Glaze is a polish without any cleaning properties used primarily to improve the shine and clarity of paint. Primarily used by body shops for finishing jobs or by detail shops to bring out the brilliance of paint, glazes are also commonly used on show vehicles to achieve a "high luster or wet look". It was developed for the darker finishes, using a slightly moister formulation to enhance the difficult to wax paint finishes. The application process is forgiving, smooth, and dust free. Your moldings will not turn white. Glazes do not replace polishing. If a surface has minor swirls and imperfections, to achieve the best superior results, the surface should be polished with a polish first.

K89620 32 oz. bottle..... 26.99 ea
K89621 1 gallon..... 59.99 ea



WARNING: Cancer and Reproductive Harm - www.P65Warnings.ca.gov

Professional Products For The Car Enthusiast!


Canvas Top Kit

K89457


Vinyl Top Kit

K89456

Top Secret Top Care Formula Kits

Top Secret kits are a complete system for the care of vinyl or canvas tops. Both kits include: 32 oz. bottle of cleaner, vinyl or canvas protectant, microfiber towels, applicator pads, and a soft wash brush with 18" handle.

*Note: *Ships via ground freight only and is shipped exclusively within the continental U.S., as no air shipments are permitted on aerosol spray cans.*

Vinyl Top Cleaner and Protectant Kit
Our exclusive Secret Formula Top Secret Vinyl Top Protectant Kit is a complete system for the care of vinyl tops. In the first step, the P99 HD Cleaner targets soil and dirt from, bird droppings, tree leaves, light stains from organic material and other debris to effortlessly remove them from the vinyl material. Next, the Secret Formula TNT Gel works as a sealer to repel water and detergents and help keep tops hydrated and supple as well as looking brand spanking new. Kit includes: Vinyl Top Interior/Fabric Cleaner P99 HD 32 oz. bottle, vinyl top VRT dressing 32 oz. bottle, applicator pads, gentle wash brush with 18" handle, elite microfiber towel, glass monster microfiber towel.

Top Secret Kit - Vinyl Formula
K89456 cleaner, protectant & applicator. 39.99 kit

Canvas Top Cleaner and Protectant Kit
Top Secret is a complete system for the care of canvas tops. In the first step, our incredible secret formula cleaner targets soil and dirt from, bird droppings, tree leaves, light stains from organic material and other debris to effortlessly remove them from the canvas material. Next, the Masters Touch Canvas Top Protectant seals the canvas shielding your top from grease, tar, salt, tree sap, and other debris. The amazing Canvas Top Protectant is an easy-to-use aerosol formula that seals the canvas material from moisture, causing water to bead on the surface to protect the material and substructure against any moisture damage. Kit includes: Canvas Top Interior/Fabric Cleaner P99 HD 32 oz. bottle, canvas top aerosol protectant (2 cans), applicator pads, gentle wash brush with 18" handle, glass monster microfiber towel, elite microfiber towel.

Top Secret Kit - Canvas Formula
K89457 cleaner, protectant & applicator. 39.99 kit

Top Secret Components

Top Secret kit cleaner, protectant, VRT dressing, pads, and towels can be purchased individually.

K89479	32 oz. P99 HD top cleaner	16.99 ea
K89440	5.5 oz. aerosol canvas protectant 11.99 ea	
K89616	32 oz. TNT vinyl dressing	26.99 ea
K89816	microfiber applicator pads	5.99 pr
K89835	soft wash brush w/18" handle	9.99 ea
K89819	gold elite microfiber towel	3.99 ea
K89805	glass monster microfiber towel	4.99 ea

P99 HD Interior Fabric Cleaner

The beautiful thing about P99 HD: It leaves no film. After cleaning fabric, carpet, floor mats, convertible tops, vinyl tops, seat upholstery, door panels, vinyl, plastic, aluminum, you will have a clean surface free of any residue. This strong all purpose cleaner should be diluted 30:1 for light jobs, 15:1 for medium, and 5:1 for heavy dirt. Apply with a sprayer or sponge. Agitate stubborn dirt with a brush. Our P99 HD Secret Formula Interior Exterior Multi Purpose Fabric Cleaner works quickly as a spot cleaner for all color-fast fabrics. Will not stain or leave a ring around area cleaned. Apply by hand and in a matter of seconds the specially formulated cleaning agents emulsify the stain while the surfactants work to unlock the soil from the fabric and suspend the dirt within the liquid cleaner. When you blot with a clean dry cloth, the liquid containing the stain transfers to the cloth.

K89479 32 oz. bottle spray bottle 16.99 ea
K89504 1 gallon (industrial strength) .. 19.99 ea

PS120 Ammonia Free Premium Glass Cleaner

PS120 Windows is a streak-free, tint safe, ammonia-free window cleaner that is quite possibly the best window cleaning liquid ever made. This is a concentrated formula that can be used as is, or diluted 1:1 or as needed. This powerful, biodegradable glass cleaner removes smoker's film, grime, and dirt, with an easy pass. Leaves no smears or streaks. Great on tinted glass, regular glass, chrome, and mirrors. Has a pleasant fragrance and contains no ammonia. Streak free formula for glass or plastic that sprays like water. No foam and no harsh smell. Just wipe and watch dirt, grease, water spots, smudges, fingerprints, forehead grease and just about anything else disappear. No streaks ever! It's easy to save money! Available in 32 oz. spray bottle or professional size gallon jug.

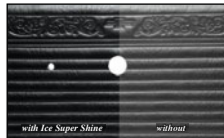
K89510 32 oz. spray bottle 13.99 ea
K89511 1 gallon 15.99 ea

Full Function Detailing Power Sprayer

Detail your classic car or truck like a pro! Featuring heavy-duty construction, this full function power atomizer and pump sprayer operates with no noise, no electricity, and no waste. Features premeasured measures in order to mix products correctly. Can be used with any and all OER's Secret Formula sprayable products including window cleaners and degreasers. Simply fill with product, tighten the head, pump it 3 times and start detailing. One full bottle will easily detail 15-20 full size vehicles with zero waste. This sprayer system will save you 40-50 minutes when compared to traditional detailing spray bottles.

K89826	atomizer/pump	31.99 ea
K89827	replacement nozzle	4.99 ea

New!

New!


with Ice Super Shine

without

Ice Super Shine High Gloss Dressing

The Ice Super Shine Dressing is a thick silicone rich dressing that leaves a super high gloss, long-lasting shine on tires, rubber molding, vinyl, and plastic. For the detailer who demands the very best in appearance and weather protection. Tires renewed with Ice will repel water through repeated washings. Ice is named for its super "wet look." It looks like a coating of ice! Contains a fruiting fragrance you'll love. This dual action premium dressing leaves surfaces 100% dry to the touch and shining better than new, while protecting the surface against dirt, dust, and harmful UV rays. Surfaces treated with Ice Super Shine Dressing look shiny longer, require less cleaning. Maintains a 100% dry, never greasy or oily, fresh texture on vinyl, leather, plastic, rubber, tires, and more!

K89521	32 oz. spray bottle	26.99 ea
K89522	1 gallon	42.99 ea



Finishing Touch Matte Finish Protectant

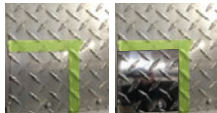
Finishing Touch is an all purpose dressing that restores the "new car" look to vinyl, rubber, leather, and plastic. It's preferred by many detailers for interiors for its "softer" look and non-greasy look and feel. Pleasant banana fragrance. Spray or wipe-on ready to use. Cleans, protects and beautifies in one easy step. Gently wipes away light traces of dirt while you apply. Patented UV absorber penetrates and acts as a protective barrier against harmful rays that cause premature aging, cracking, fading and peeling. Engineered to work like a lotion to soak into new vinyl or dry vinyl to aid in prolonging and strengthening the surface. Perfect for dashboards, vinyl tops, door panels, consoles, tires, trim, bumpers, vinyl seats, moldings, and more.

K89523	32 oz. spray bottle	27.99 ea
K89524	1 gallon	21.99 ea


New!

CAR CARE PRODUCTS

Professional Products For The Car Enthusiast!



OER® Premium Metal Polish & Sealant

OER® Extreme Shine Metal Polish & Sealant cuts through layers of dulling oxides to restore a wet mirrorlike finish that outshines chrome. This outstanding polish makes chrome, copper, brass, aluminum, stainless steel and other metalwork gleam and look their absolute best. Spreads on with ease, buffs off with little effort. Great for oxidized metals and even light rust. Can be easily applied in the shade or sun. Leaves virtually no smear, dust, or powder. The most innovative metal polish ever. A 3 step product in one, this diminishing metal polish cuts fast, cleans like no other, shines like a mirror and protects like a sealant. Utilizing friction and heat OER® Extreme Shine Metal Polish cleans, restores, revives and polishes. Friction generates heat that allows the product to break down into a micro-fine polish that leaves the surface shining like a mirror. During the final phase, it breaks down to release the durable protective sealant that bonds to metal surfaces reducing corrosion and prolonging shine. Use by hand with a polisher or with your polish ball and drill. 

K89483 16 oz. bottle..... 17.99 ea



OER® Secret Weapon Polish Ball

The Secret Weapon Polish Ball bends and compresses enabling it to fit into tight spaces and make the cleaning and polishing of difficult, hard to reach areas like wheels, rims, and other metal work much easier. Can be attached to any handheld drill or drill-like device for fast and superior cleaning and polishing. Great for cleaning and buffing small items like mirrors, headlight lenses and trim parts. Space age Dura-foam and fiber soft materials make it the most durable tool of its kind. Ideal for use with your favorite wax, polish, wheel product, or compound.

K89412 3" red foam ultra fine density.... 10.99 ea
K89413 3" yellow foam med. density.... 10.99 ea
K89490 3" wool-like fiber material..... 26.99 ea



Professional Detailing Supplies

Professional detailing supplies for the automotive enthusiast. Now you can buy your favorite products in bulk! 1 gallon sizes and refill your own professional grade heavy-duty spray bottles! Sprayers are made of Viton® for superior chemical resistance. The adjustable nozzle sprays from a fine mist to a jet stream. Long-lasting durability only available from a professional grade sprayer.

HD Bottles with Chemical Resistant Sprayers
K89493 package of three 16 oz. bottles 13.99 kit
K89494 package of three 32 oz. bottles 16.99 kit
"Ketchup" 12 oz. Bottle
K89825 12 oz. "ketchup" bottle..... 2.99 ea

"Ketchup" Top for Squeeze Bottle (38/400 Thread)
K89492 package of three..... 4.99 kit
Hand Pump for One Gallon Bottle
K89496 professional pump..... 4.99 ea
Chemical Resistant Industrial Trigger Sprayer
K89495 for 16 oz. or 32 oz. bottle..... 2.99 ea

OER® "Secret Formula" Wheel and Tire Care



Over the years, OER® has become the name that you have come to trust for quality restoration products. We are dedicated to bringing our valued customers the absolute best products our industry has to offer. When it comes to car care, our "Secret Formula" products are no exception! We know you have a lot invested in your classic car, so we have formulated products that not only perform at a level unmatched by any other brand, but a formula that keeps your investment in mind. Our formulas are engineered not only to keep your pride and joy looking good, but also to protect your vehicle's delicate surfaces from the elements without the use of harsh damaging chemicals.

OER® Acid Free Wheel and Tire Cleaner

Spray-on and rinse-off! Easily removes deposits of brake dust, grease, and road grime from wheels. Safe for clear coated, painted, and polished finishes. This strong non-acid formula is fortified with a citrus cleaning agent. This is an industrial strength 1:1 concentrate. Dilute with water as needed. Long time accumulations of brake dust may need light agitation with a soft brush. Unlike many alternative products, OER® Acid Free Wheel Cleaner dissolves grime and brake dust without damaging your chrome and alloy wheels. Non-acidic, spray-on wipe-off formula with no scrubbing necessary and no harsh scent.

K89614 32 oz. bottle..... 16.99 ea
K89615 1 gallon..... 24.99 ea

OER® Secret Formula Wheel Wax

OER® Secret Formula Wheel Wax is formulated to safely and effortlessly clean, shine, protect and prolong all types of wheels and wheel finishes. Wheel Wax delivers a high gloss, durable wet shine finish on all chrome, aluminum, stainless, powder coated, and even painted wheels. Clean, polish, shine, protect, and prolong in one easy step. Extremely easy to use and apply, utilizing accurate micro-size synthetic beads that gently and effortlessly lift and polish away oxidation and road film from wheels to guarantee a scratch free perfect surface. Wheel Wax not only enhances shine, it protects your investment. Harmful degreasers and acids can damage wheels reducing shine and causing premature oxidation and deterioration of wheel. Wheel Wax is an acrylic sealant that bonds instantly to protect against brake dust, heat, acid rain, water spots, airborne fallout, and road contaminants.

K89486 8 oz. jar..... 16.99 ea



OER® TNT Extended Life Tire & Trim Dressing

This unique formula quickly penetrates rubber trim and tires to hydrate and provide lasting protection. TNT Extended Life gel by OER® finally delivers on that promise. Simply wipe on using a pad and TNT gel restores the look of faded tires, trim, bumpers, seals and weatherstrip. What's more, OER® TNT gel lasts for many months, not days. Our exclusive, no-streak, no-run, and non-drip formula works to repel water and detergents and helps keep tire walls hydrated and supple as well as looking brand spanking new. Prepare your trim for a product unlike any other. A true premium trim restorer and protectant, that will not drip, dry out, or destroy surfaces. Provides unmatched durability, ease of application and a superior "new look" shine that lasts through numerous washes. Non-greasy, non-tacky and simply amazing.

K89616 32 oz. bottle..... 21.99 ea
K89617 1 gallon..... 34.99 ea



Professional Products For The Car Enthusiast!



Grit Guard insert keeps the wash water clean and scratch free!

Grit Guard Wash System

This unique wash bucket provides a convenient way to store or transport all of your vehicle cleaning supplies while doubling as an extremely effective finish protecting wash tool. The Grit Guard insert sits in the bottom of the pail to extract particles and contaminants from mitts and brushes. Gravity causes sand and dirt to settle below the guard so the wash water stays clean and scratch free.

Basic Wash System

The basic wash system includes a black pail with a yellow sealing lid and a Grit Guard insert.

K89740	3.5 gallon.....	28.99 ea
K89741	5 gallon.....	32.99 ea

Grit Guard Deluxe Wash Bucket Sets

This superb washing system features a Grit Guard insert, a heavy-duty bucket, a seat cushion and a dolly that turns the washing system into a rolling stool, so you can sit down and detail your car comfortably. Five heavy-duty smooth rolling casters roll over cracks without tipping. Two locking casters hold your washing system in place while working on inclines. The convenient spin-on lid creates a perfectly sealed storage compartment for all of your favorite cleaning supplies. Supports up to 250 pounds.

Deluxe Washing System

K89742	3.5 gal. black pail w/yellow top	64.99 set
K89743	5 gal. yellow pail w/black top	67.99 set

Individual Components

K89744	Grit Guard insert.....	9.99 ea
K89745	5 caster dolly.....	36.99 ea
K89746	cushion/kneeling pad.....	11.99 ea
K89750	Gamma seal lid.....	10.99 ea
K89751	5 gal. yellow pail w/black insert	29.99 ea

Dual Wash Bucket System

This system includes two dollies, two Grit Guard inserts, two sealing lids, a dual bucket connector plate and a seat cushion. The idea behind a two bucket wash is simple: two buckets means double the protection from swirl marks and scratches. With a designated rinse bucket, all the dirt and grime from your vehicle stays out of the clean, soap filled wash bucket and off your prized possessions.

K89748	5 gallon dual wash.....	119.99 set
--------	-------------------------	------------



Protection from Moisture During Storage

Sta-Dri pouches significantly reduce humidity and moisture inside of your vehicle safely and conveniently. Pouches can be regenerated up to 3 times. Use 1-2 pouches per vehicle. Depending on humidity level, one pouch can last up to a year of continuous storage, though it is recommended that you check every month and regenerate as necessary. Non-toxic and non-corrosive, remains dry to the touch even when fully saturated.

BF1001	2 lb pouch.....	14.99 ea
BF1002	two 2 lb pouches.....	21.99 pr
BF1003	four 2 lb pouches.....	43.99 set

Buffing Pad Wash Bucket

When you hand wash pads, the backing pad gets wet, oversaturating the foam. The universal pad washer keeps the backing pads dry and extends the life of your pads. No more throwing away perfectly good pads because the backing pad has torn off. Your buffing pads, buffing bonnets, polishing tools and accessories clean up so well you'll thank they're new! Condition, clean, and dry all in one system.

The universal pad washer extracts contaminants trapped deep inside your buffing pads. No cross contamination worries when switching buffing compounds. O-ring seal lid provides water tight portability. Wash and dry in under 30 seconds!

K89747	119.99 ea
--------	-------	-----------



Pickup Layers of Dust w/One Sweep!

An easy way of keeping your vehicle clean and free of dust, looking like it was just washed. It's specially treated cotton fibers lift dust off the surface without scratching the paint, even delicate lacquers. The more you use it, the better it works! Regular use can significantly reduce the frequency of washings.

62441	large duster.....	21.99 ea
62443	mini duster.....	10.99 ea
62444	buy both dusters and save!.....	25.99 set



Chenille Wash/Polish Mitts & Pad

Chenille microfiber wash mitts and pads are gentle on your paint and clean great. Chenille is a deep pile, velvety cord made of durable, woolen microfiber and are plush, absorbent, lint free, and 100% scratch free. The "scrubber side" is made from a microfiber mesh great for removing bird or bug mess from non-painted surfaces. The cotton wash mitts superior water absorption and retention qualities are combined using the right amount of durable fiber. Microfiber polish mitt pads waxing in your hands easier. This polish mitt will beautifully and protect your paint or metal surfaces when waxing.

Chenille Microfiber		
K89811	premium Chenille wash mitt.....	7.99 ea
K89812	wash mitt with scrubber side.....	6.99 ea
K89813	wash pad with scrubber side.....	6.99 ea

Cotton Microfiber		
TX9X	wash mitt.....	4.99 ea

Monster Microfiber Towel

Fattest, thickest and most absorbent microfiber towel. They are durable and silk banded for long-lasting use with streak and scratch free results every time.

K89805	16" x 16" single.....	4.99 ea
K89806	16" x 16" 3 pack.....	13.49 set
K89807	17" x 24" single.....	6.99 ea
K89808	17" x 24" 3 pack.....	18.99 set

Elite Microfiber Towel

Extra plush, super absorbent, lint free and 100% scratch free. The long fiber side works great in quick detail and waterless car wash applications. The short fiber side is great for buffing and cleaning windows.

K89819	16" x 16" single.....	3.99 ea
K89820	16" x 16" 3 pack.....	10.99 set
K89824	25" x 36" extra thick.....	12.99 ea

Premium White Cotton Towel

These thick, super absorbent, pre-shrunk combed cotton white towels are manufactured from 100% Supima cotton.

K89809	25" x 16" dozen.....	24.99 set
--------	----------------------	-----------



Waffle Weave Towel

Super absorbent, ultra plush, waffle weave towels. Its unique magnetic catch attracts lint and dirt, trapping it in the weave so it will not scratch the surface.

K89810	26" x 32" each.....	9.99 ea
K89821	26" x 32" 3 pack.....	34.99 set



Microfiber Applicator Pads

Professional grade microfiber applicator pads are the ideal choice for applying wax, sealants, glazes, dressing, or your favorite conditioners.

K89816	5.99 pr
--------	-------	---------

Microfiber Applicator Pads

These 5" round microfiber applicator pads make it easy to apply waxes or rubbing compounds. Deep penetrating fibers are lint and streak free. Won't scratch paint or clear coat. They absorb 8 times their own weight in water and hold dust, dirt, grease, and spills. Simply rinse and reuse. Machine washable. Apply dressing and begin detailing!

K89828	2.99 pr
--------	-------	---------

Professional Products For The Car Enthusiast!

13 Piece Set Includes:

- Tire Brush
- Wheel Spoke Brush
- Interior Brush
- Carpet Brush
- Ultra Soft Body Brush
- Soft Grill/Trim Brush
- Heavy-Duty Brush
- Wheel Well Brush
- 10" Handles
- 20" Handles



soft rubber edging prevents paint dings



contoured rubber handle for comfort and grip

Deluxe Professional Detailing Brushes

These deluxe professional detailing brushes are the finest on the market. They feature ergonomically, soft padded handles for hours of use with less fatigue. A soft rubber edging surrounding the edges on the bristle portion of the brush helps to prevent accidental scratches or dings to your vehicle. Sets are available to meet your needs.

Specialty Small Brush Set 29.99 set
BS201 7 piece

Body Wash Brush Set
BS202 3 piece 10" handles 26.99 set
BS203 3 piece 20" handles 33.99 set

Buy the Complete Set and Save!
BS204 13 piece complete brush set 88.99 set

AUTHORIZED



Specialty Brush

Keep your vehicle shining with these high-quality specialty brushes. Each brush is specially designed for the application indicated.

TW119 upholstery brush 6" 4.99 ea
TW117 tire brush 7" 3.99 ea
TW114 wheel/bumper brush 10" 5.99 ea
TW121 grill/spoke brush 12" 5.99 ea
TW122 grill/spoke brush 16" 6.99 ea
K89497 soft foam wheel/spoke brush 9.99 ea



10 Piece Set Includes:

- Tire Brush
- Wheel Spoke Brush
- Interior Brush
- Heavy-Duty Brush
- Soft Wash Brush
- Gentle Grill/Trim Brush
- 8" Handles
- 18" Handles

Professional Detailing Brushes

These are professional type brushes that will make detailing your classic a little easier. They feature heavy-duty, soft or gentle bristles, depending on the cleaning job on hand. Handles are made of quality hard plastic to withstand hours of use. Several sets are available to meet your needs.

Specialty Brush Set
K89852 4 piece 22.99 set

Body Wash Brush Set
K89850 3 piece 8" handles 18.99 set
K89851 3 piece 18" handles 26.99 set

Buy the Complete Set and Save!
K89853 10 piece complete brush set 68.99 set



Specialty Wash Brush

Keep your vehicle shining with these high-quality specialty brushes. Each brush is specially designed to fit the telescoping handle, sold separately.

K89840 standard head, soft bristles 14.99 ea
K89843 wrap around head, strong bristles 16.99 ea
K89844 43" - 68" telescoping handle 15.99 ea



Notched Shop Grip

The Notched Shop Grip handle provides a quick and secure hold on fasteners for polishing, grinding, or wire wheeling without damaging the threads. It also makes a great handle for holding hand tools such as countersinks, taps, and files. Handle set includes with 2 collets to fit 1/4"-3/8" hardware (#4-#10 screws). Also available separately is a 1/2" collet that fits larger 7/16"-1/2" hardware and a nut polishing attachment that fits 1/4", 5/16", and 3/8" nuts.

Notched Shop Grip
A9200108 #4-#10, 1/4"-3/8" 94.99 set

1/2" Collet Accessory
A9200109 7/16"-1/2" 37.99 ea

Nut Polishing Attachment
A9200110 1/4", 5/16", and 3/8" 37.99 set

Attaches to any standard drill.



Power Scrub Drill Brush

Use drill brush with any drill to clean carpet, fabrics, upholstery, seats, wheels, and much more. The yellow brush has soft bristles and can be used to clean carpet, upholstery, fabrics, door panels, wheels, and more. The red brush is heavy-duty with very stiff bristles and is meant for intense scrubbing of hard surfaces. Use it to remove heavy grease, grime, or loose paint.
K89817 yellow light duty 9.99 ea
K89818 red heavy-duty 9.99 ea



Auto Wash Stick

The auto wash stick is the fastest and easiest way to wash your vehicle. Cleaning solution is pulled into stick by submersing in bucket and then pulling back on handle. Dispense solution as needed by pushing forward as you wash.

C800477 19.99 ea



Industrial Grade Fire Hose Nozzle

Control your spray pattern and pressure with this industrial grade fire hose nozzle. This nozzle works just like those used by fire departments. Manufactured of heavy-duty anodized aluminum and features a protective rubber bumper.

K89815 17.99 ea



Protect Your Wheels from Over Spray

The RIM PRO® wheel protector is foldable and includes a handy pouch lending itself to easy storage and accessibility in your vehicle or out. The perfect product to help shield your wheels from tire shine over spray, allowing your wheels to stay clean and free of damage from harsh chemicals. Available in 13", 14", 16", 18", and 20" sizes.

RM1001 specify size 9.99 ea

Accessories for the Ultimate Garage!



Powerful Dual Purpose Vacuum/Blowers

The Vac 'N' Blo® is an industrial type 200 MPH indoor/outdoor Vacuum Cleaner/Blower combination together in one portable lightweight unit. The original model features a powerful 4.0 peak horsepower motor, and comes complete with two 20' extension wand, Powerizer™ Air Maximizer, permanent cloth bag, and 2-year manufacturer's limited motor warranty. The miniature Vac 'N' Blo® Jr. models include 1/2 horsepower motor, power unit, one 20' extension wand, and five extra reusable/disposable paper bags. Choose from 110 Volt (household current) or 12 Volt (cigarette lighter) power source for Jr. models. All models feature rugged steel construction, baked enamel finish, flexible hose, Pick-All nozzle, Magic Air™ inflator adapter, dust brush, crevice tool, and shoulder strap.

Vac 'N' Blo Original		
MV101	vacuum/power blower.....	269.99 ea
Vac 'N' Blo Jr. 110 Volt		
MV102A	household use.....	138.99 ea
Vac 'N' Blo Jr. 12 Volt		
MV102B	attaches to vehicle lighter.....	142.99 ea



Air Force Master Blaster Vacuum/Blower

The Air Force Master Blaster uses twin 4.0 peak HP motors (8 peak HP) to blow warm, dry, filtered air that provides safe drying without the chance of scratching your expensive paint and chrome finish. It also speeds up drying time, minimizing water spots and blowing water out of places you can't normally get to with a towel or chamois. Both feature a sturdy all steel construction, weigh 26 pounds, and are 22" x 8" x 11". The Master Blaster comes with a 10 ft. 1-1/2" flexible commercial strength hose, heavy-duty neoprene blow nozzle, with 5 additional interchangeable attachments. The Master Blaster Revolution also includes swivel front wheels, a wall mount bracket, and hose hanger.

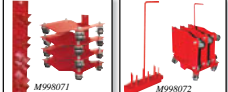
MB101	Master Blaster.....	439.99 ea
MB102	Master Blaster Revolution.....	459.99 ea
MB103	Master Blaster Revolution.....	571.99 ea
MB104	wall mount.....	314.99 ea
MB106	Blaster Sidekick.....	104.99 ea



Metropolitan Hand Vacuum/Blower

This lightweight vacuum boasts 500 watts of power, yet weighs in at just a scant 2.7 pounds. It features all steel construction with a stainless steel finish. Available in 110V powered versions, so you can use it in your garage or throughout the house, or it's also available in a 12V powered version made solely for your vehicle. Both models include the power unit, crevice tool, and dust brush. The 12V version will include an adapter and cord to plug into your vehicle. Includes: 20 inch flexible hose, Pick-All nozzle, crevice tool, upholstery tool, flexible strap, dust brush, 30 foot hose. Made in U.S.A.

MV105	hand vacuum	120V.....	96.99 ea
MV106	hand vacuum	110V.....	115.99 ea
MV107	hand vacuum	12V.....	125.99 ea



Auto Dollies

Move your project around the garage with ease! The Auto Dollies are manufactured from 1/4" steel plate, featuring zinc-plated ball bearing castors and 1-3/4" wide rollers. Each standard dolly supports up to 1500 pounds, and for larger vehicles, the heavy-duty model supports up to 2500 pounds! Storage is made simple with the wall mount Dolly Dock, or the convenient Rolling Rack! Auto Dollies measure 16" long and are available in 8", 12", and 16" widths. Sold in pairs.

Standard			
AS200100	8" x 16".....	77.99 pr	
AS200101	12" x 16".....	77.99 pr	
AS200102	16" x 16".....	88.99 pr	

Heavy-Duty			
AS200103	8" x 16".....	92.99 pr	
AS200104	12" x 16".....	109.99 pr	
AS200105	16" x 16".....	123.99 pr	

Accessories			
M998071	dolly dock.....	46.99 ea	
M998072	dolly rolling rack.....	90.99 ea	



Speed and Comfort for a Demanding Job!

This seat provides support while taking pressure off knees, ankles, and toes. The caster wheels allow you to move freely, and the attached floating kneepads allow your knees to rest. Attached to the tool is a 7" x 15" removable tray which is great for holding tools and small parts. Weighing only 8 lbs, the tool is manufactured from 1/8" thick industrial strength aluminum. The comfortable web spring seat is covered with a soft leather like cover and adjusts vertically 11-1/2" to 15-1/2" in height. Backed by a 1-year manufacturer's limited warranty.

X99115	234.99 ea
--------	-------	-----------

Stainless Steel Magnetic Parts Tray

Put an end to lost parts with these magnetic trays! Powerful rubber coated magnets keep your parts where they belong and prevent the tray from sliding on metal surfaces. Manufactured from durable stainless steel with a partial lid to keep parts in their place.

T243	circle single parts dish.....	12.99 ea
T245	rectangular double parts tray.....	24.99 ea



Wall Mounted Wheel/Tire Hanger

Free up space by getting wheels and tires off the floor! Each heavy-duty powder coated hanger is 21" x 11" and mounts at a slight angle so wheels won't slide off.

M998070	wheel/tire hanger.....	40.99 ea
---------	------------------------	----------



Track Mat

Ford Performance track mats are perfect for the race track or working in the garage or shop. These 4' x 2' folded closed cell foam mats offer comfort while kneeling or laying underneath your performance vehicle. They are constructed from 3/4" thick, 100% polypropylene fiber for maximum impact absorption and stain resistance. The "Ford Performance" logo is featured on the bottom corner.

M1822A8	track mat.....	52.99 ea
---------	----------------	----------



Protection for Your Garage Floor

The Clean Park Mat catches all of the fluids and debris that falls off your vehicle while it is parked. Made of heavy-duty 20 mil vinyl with raised plastic edging, it can prevent gallons of liquid from spreading onto the garage floor.

ACP115	7-1/2' x 16'.....	224.99 ea
ACP116	7-1/2' x 18'.....	229.99 ea
ACP117	7-1/2' x 20'.....	259.99 ea



Garage Laser Park

Laser shines onto your vehicle to precisely guide you to the correct spot. Helps prevent damage to your vehicle and your garage. Easy installation. Simply attach to your garage ceiling with included hook-and-loop tape or screws. No wiring necessary. Automatically activates when your vehicle enters the garage. Powered by 110V AC adapter (included). Park your vehicle in the garage in the same spot every time!

37310	1 Laser Park.....	29.99 ea
37312	2 Laser Park.....	34.99 ea

Accessories for the Ultimate Garage!



A9100272

A9100273

Chrome Fire Extinguisher



Ensure the safety of your vehicle while adding some shine with one of these chrome-plated dry chemical fire extinguishers. Two models to choose from: a 2-1/2 pound, A.B.C., rated extinguisher that is 3" in diameter and 16" tall and a 1 pound A.B., rated unit that is 2-3/4" diameter and 10" tall. Both extinguishers include a black powder coated steel mounting bracket.

Important: Type A extinguisher is rated for paper, wood, textiles, and plastics. Type B rated for oil, gasoline, kerosene, or paint. Type C is rated for "live" electrical equipment.

Small 1 lb Extinguisher 134.99 ea
A9100272

Large 2-1/2 lb Extinguisher 139.99 ea
A9100273



H31001B

H35001R

H32501C

Clean Agent Fire Extinguisher



H3R Performance HalGuard™ premium clean agent fire extinguisher. These compact handheld extinguishers feature a powder coated or chrome steel cylinders and all metal valve construction. They contain Halotron® 1, electrically non-conductive "clean" extinguishing agent limits danger of electric shock or damage to electrical equipment. The liquefied gas agent extinguishes hard-to-reach fires and has a discharge range of 6-8 feet.

H31001B	1.4 lb	black	227.99 ea
H31001C	1.4 lb	chrome	258.99 ea
H31001R	1.4 lb	red	212.99 ea
H32501B	2.5 lb	black	300.99 ea
H32501C	2.5 lb	chrome	375.99 ea
H32501R	2.5 lb	red	287.99 ea
H35001R	5 lb	red	314.99 ea



H31002C

H31002R



H32502B

H32502C

H32502R

Dry Chemical Fire Extinguisher



H3R Performance MaxOut™ dry chemical fire extinguishers. These ultra compact 1 lb and compact 2.5 lb extinguishers are perfect for under-dash or seat mounting and the chrome finish will not fade like anodized units on the market will. Dry chemical fire extinguishers contain a siliconized sodium bicarbonate based agent, UL listed and rated 2B:C for common combustibles like wood, paper, rubber, and some plastics. This proven design utilizes free flowing, non-caking additives to effectively smother flammable liquid fires without conducting electricity back to the operator. Protect your investment with a tried and true fire extinguisher design that effectively smotherers fires quickly and safely.

H31002C	1 lb	chrome	227.99 ea
H31002R	1 lb	red	81.99 ea
H32502B	2.5 lb	black	149.99 ea
H32502C	2.5 lb	chrome	186.99 ea
H32502R	2.5 lb	red	105.99 ea



A9100280

A9100278



Billet Fire Extinguisher Bracket



Billet fire extinguisher mounting brackets for Mustang models. Brackets are CNC-machined out of 6061-T6 aluminum and are built to mount in any position. The round mounting bracket fastens permanently to the extinguisher (sold separately) and is held on its base with a stainless aircraft quick release pin. The large brackets work with the 2-1/2 lb (3" o.d.) extinguishers. The small brackets work with the 1 lb (2-3/4" o.d.) models and both are available in black, polished or satin finishes. The small extinguisher bracket is also offered in a roll bar mount.

Small 1 lb Extinguisher Brackets

A9100276	black	94.99 ea
A9100275	polished	94.99 ea
A9100274	satin	89.99 ea

Small 1 lb Extinguisher Roll Bar Brackets

A9100282	black	148.99 ea
A9100281	polished	142.99 ea
A9100280	satin	125.99 ea

Large 2-1/2 lb Extinguisher Brackets

A9100279	black	102.99 ea
A9100278	polished	102.99 ea
A9100277	satin	89.99 ea



H3300

Quick Release Extinguisher Mount



Quick release brackets for H3R Performance fire extinguishers. Made for extreme duty, these fiberglass reinforced nylon brackets are designed to withstand inertia loads in excess of 27G in all directions. They will install an H3R extinguisher on any flat surface offering a versatile mounting solution for street, off-road, and racing enthusiasts.

Note: Extinguisher not included.
H3300 3" 1, 1.4, 2.5 lb 69.99 ea
H3425 4-1/4" 5 lb 69.99 ea

2.5 Pound Fire Extinguisher

Add a modern accessory to your classic car and be prepared! Keep this fire extinguisher in your vehicle in case of any (ABC) type of fire emergency. Includes mounting bracket.

G149179 44.99 ea



detail



H3012B

Under Seat Extinguisher Mount



Fully adjustable fire extinguisher seat mount from H3R Performance fire extinguishers. These universal brackets attach to the seat rail bolts or above the slider on most vehicles. This puts the extinguisher at the driver's fingertips in case of an emergency. Features all aluminum construction in a brushed or black powder coated finish and will accept all H3R Performance 1 lb to 2.5 lb fire extinguishers.

H3012B black 114.99 ea

Accessories for the Ultimate Garage!



Wall Guard



Hanging Door Guard

2 Ways to Prevent Costly Paint Chips

The wall guard attaches to your garage wall providing cushioned protection for both your vehicle door and your wall. Comes complete with hardware needed to attach to drywall, studs, brick, or concrete. Predrilled holes are 16 and 24" apart for fastening to stud wall. Our hanging door guard is ideal for two vehicle households. This fiber-like pad hangs from the rafters or drywall ceiling of your garage providing a protective barrier between both vehicles. You in effect protect two vehicles with one product. Hardware for hanging the device is included. Measures: 25" x 6-1/2".

ACP102	wall guard	11.99 ea
ACP103	hanging door guard	21.99 ea



Park Perfectly Every Time

The Park Smart Mat helps guide you into your garage space letting you know exactly when to stop. Perfect for getting your classic or collectible car into the correct position in a crowded garage. As you feel yourself driving over the first bump, the second bump tells you that you have driven far enough forward. Measures: 27-1/2" x 12" x 1-1/2". Includes a manufacturer's limited lifetime warranty. Buy one for each of your vehicles.

ACP101	Park Smart Mat	21.99 ea
--------	----------------	----------



Trailer Ramps

Is your trailer door too steep to get your vehicle to the race track or autocross? Are you tired of busting up your nose? Race Ramps has just the solution for you: simply place the trailer door on the notch of these specially designed trailer and decrease your angle of approach to as little as 4 degrees. These hassle free, lightweight ramps work for vehicles weighing up to 6000 pounds. Trailer ramps are ideal for low ground clearance vehicles with extra wide tires.

Note: For increased safety, use Wheel Chocks with all Race Ramp products.

RR104	5"	372.99 pr
RR105	8"	371.99 pr

Wheel Chocks

Wheel Chocks are ideal for use with all Race Ramp products, providing additional safety in the working environment. Made from solid rubber composite with an extra grip bottom, they each weigh 3 pounds. Set of 4.

Note: For increased safety, use Wheel Chocks with all Race Ramp products.

RR109	6" x 4" x 5"	67.99 set
-------	--------------	-----------



Wheel Cribs

Wheel Cribs are a safe, lightweight alternative to jack stands. They cradle the tire 10" off the ground, providing unobstructed access underneath the car. Each crib supports 1500 pounds (3000 pounds per set) and weighs only 5 pounds. Wheel Cribs also can be used for vehicle display.

Note: For increased safety, use Wheel Cribs with all Race Ramp products.

RR108	15" x 10" x 12"	151.99 pr
-------	-----------------	-----------



Roll-Ups

Designed to be used in conjunction with 56" or 67" Race Ramps, Roll-Ups raise the opposite end of the vehicle up 4", allowing even more working room under the vehicle. Roll-Ups can also raise the front or rear of the vehicle to allow the use of a standard floor jack. Roll-Ups are 14" wide work with tires up to 12" wide.

Note: For increased safety, use Wheel Chocks with all Race Ramp products.

RR106	10.79 degree incline	175.99 pr
-------	----------------------	-----------

Race Ramps

Race Ramps are ideal for vehicles with tires up to 10" wide. With an incline of only 10.75 degrees, they lift your vehicle up 8" or 10" and hold up to 3000 pounds per set while weighing only 10 pounds per ramp. Will not slide across a garage floor, dig into an asphalt driveway, or scratch or otherwise damage a cement or painted floor. They can be used on grass, dirt, or almost any other flat surface, and they will never rust. Race Ramps come complete with straps for easy carrying and storage.

*Note: For increased safety, use Wheel Chocks with all Race Ramp products. *Shipped oversized.*

56" x 12" Race Ramp with 8" Lift		6031
RR100	1 piece design	272.99 pr
RR101	2 piece design	305.99 pr
67" x 14" Race Ramp with 10" Lift		
RR102*	1 piece design	366.99 pr
RR103*	2 piece design	425.99 pr

FlatStoppers

This product helps to keep your tires from flat spotting during long periods of storage. Once the tires are set in the FlatStoppers, more of the bottom portion of the tire will be fully supported, thus dispersing the weight of the vehicle more evenly onto the tire to prevent any flattening. FlatStoppers will not conduct heat or cold to your tires despite changing floor temperatures.

RR107	4 piece	292.99 set
-------	---------	------------



Seasonal Tire Totes

Take the hassle out of changing your seasonal tires with this handy pair of Seasonal Tire Totes. Heavy-duty shell with easy to carry handles protect you and your clothes from brake and tire residue. Tires stay neatly covered and stacked until the next season. Wheel Felts slide into the Tire Tote and clip into place to protect wheels from nicks and scratches.

KG003	Tire Totes	one size fits all...	21.99 pr
KG007	Wheel Felts	20" diameter	14.99 pr



Magnetic Door Guard

The MagGuard is a custom magnetic door guard and is made for use in the vehicle owners personal garage or parking area. They are 6 inch by 12 inch and 5/8 inch thick with 4 rare earth magnets that do not touch the vehicle surface. The MagGuard is made to be modular and you can use as many as you want for any place that is steel. The MagGuard will also work over a car cover.

GF301321		22.99 ea
----------	--	----------



Rust Prevention Magic

RPM is a revolutionary breakthrough for auto restorer's who desire to keep their metal looking brand new and factory original. This product is a blend of the finest waterproofing polymers known to the automotive industry. It inhibits and protects against all forms of oxidation on bare metal components.

RP1001		35.99 ea
--------	--	----------



Automotive Degreaser

Efficiently remove tire rubber, grease and oil from your vehicle. Will not harm paint. Just spray-on and wipe-off. Works great for cleaning up shop equipment and tools as well. Professional strength formula foams away dirt, grease, and oil from all automotive parts and surfaces.

JG1310	18 oz. can	6.99 ea
JG1311	case of 12	75.99 cs



Spray-On Insulation



Buy the Complete Set & Save!

BEFORE APPLICATION



AFTER APPLICATION



Shared Benefits:

- Easy spray-on application
- Continuous protective moisture barrier
- Fast clean up with soap and water
- Environmentally friendly solution
- Applicable to interior or exterior of vehicle
- Non-toxic and class A fire rated
- Both are paintable
- Coverage is approximately 50 ft²/2 gallons

Sound Control Benefits:

- Provides non-combustible thermal insulation
- Able to withstand temperatures up to 500 degrees F
- Interior temperature reduced by 30 degrees F
- Offers a protective, seamless membrane

Ceramic Insulation Benefits:

- Protects surface from moisture and rust
- Dampens annoying rattles, vibrations and road noise
- Impressive damping to weight ratio
- Coating can withstand temperatures up to 300 degrees F

Sound Control and Ceramic Insulation



Get the comfort of premium grade insulation without the extra weight! These environmentally safe formulas from LizardSkins can be used as one part coating or as a two stage system for a cooler, quieter driving experience. The Sound Control formula dampens unwanted engine and road noise, while the Ceramic Insulation formula cools your vehicle up to 30 degree F or more creating a more comfortable ride. Designed for floors, roofs, firewalls, fenders, transmission tunnels, door panels, trunks, and more, all at a combined cured weight of 52 lbs for four gallons. Insulating a vehicle has never been this easy, thanks to a custom designed application gun made specifically to handle the thick density of the coatings with ease. Order the individual components or buy a complete kit and save!

Important: For two stage applications, Sound Control coating should be used as the base. Four gallons of each coating are required to encapsulate a typical interior and trunk area of 1 vehicle, and 1 gallon of Sound Control when applied as undercoating.

Sound Control		
152984	1 gallon pail	93.99 ea
152985	2 gallon pail	175.99 ea
Ceramic Insulation		
152986	1 gallon pail	90.99 ea
152987	2 gallon pail	175.99 ea
SuperPro Gun		
152988	SuperPro gun and stir paddle	112.99 ea
Mini Kits		
R8091	4 gallons of Sound Control with SuperPro gun	441.99 kit
R8092	4 gallons of Ceramic Insulation with SuperPro gun	441.99 kit
Complete Kit		
R8093	4 gallons of each formula with a SuperPro gun	776.99 kit

PX2006 Master Tech Set Includes:



PX2006

- 1 ea. 30g powder — white
- 1 ea. 30g powder — black
- 1 ea. 30g powder — clear
- 1 ea. 50ml liquid
- 2 ea. molding bar
- 2 ea. applicator bottle
- 4 ea. applicator needle
- 3 ea. powder dish
- 1 ea. pipet
- 1 ea. fiber reinforcement cloth
- 1 ea. applicator reusable case
- 1 ea. instruction CD

PX1901 Shop Set Includes:



PX1901

- 1 ea. 250g powder — white
- 1 ea. 300ml liquid
- 3 ea. molding bar
- 1 ea. applicator bottle
- 2 ea. applicator needle
- 1 ea. powder dish
- 1 ea. pipet
- 1 ea. video CD

PLASTEX Master/Shop Plastic Repair Set



Plastex plastic repair sets are just what you need to repair those small plastic parts that can still be used on the vehicle instead of replacement. Each set includes all the necessary components required to repair plastic parts.

PX2006	master tech set — 30g ea. powder, 50ml liquid with case	79.99 ea
PX1901	shop set — white 250g powder, 300ml liquid	124.99 ea
PX1902	shop set — black 250g powder, 300ml liquid	124.99 ea
PX1903	shop set — clear 250g powder, 300ml liquid	124.99 ea



PX1805

PLASTEX Plastic Repair Set



Plastex plastic repair sets are just what you need to repair those small plastic parts that can still be used on the vehicle instead of replacement. Each set includes all the necessary components required to repair plastic parts. Available in white, black, or clear. All sets include: molding bar, bottle, needle, and pipet.

PX2001	standard set, white-30g powder, 50ml liquid	29.99 ea
PX2002	standard set, black-30g powder, 50ml liquid	29.99 ea
PX2003	standard set, clear-30g powder, 50ml liquid	29.99 ea
PX1801	small set white-5g powder, 10ml liquid	16.99 ea
PX1802	small set black-5g powder, 10ml liquid	16.99 ea
PX1803	small set clear-5g powder, 10ml liquid	16.99 ea
PX1805	mini master set 5g ea. wht, blk & clear powder, 10ml liquid	19.99 ea

PLASTEX Plastic Repair Set Refill



Individual refills for all the components of the repair sets to replenish your stock.		
PX2101	30g powder	white 12.99 ea
PX2102	30g powder	black 12.99 ea
PX2103	30g powder	clear 9.99 ea
PX2110	50ml liquid	9.99 ea
PX2115	molding bars	set of 3 9.99 set
PX2120	applicator needles	set of 4 3.99 set
PX2121	applicator bottles	set of 2 3.99 set
PX2122	mixing cups	set of 2 3.99 set
PX2123	pipets99 ea
PX2124	fiberglass cloth	approximately 1 sq. ft. 2.49 ea
PX1002	instruction CD 2.49 ea

OER® Rust Removal & Prevention

Remove Rust

OER® Dissolve Rust

OER® Chemical Restoration Dissolve Rust returns rusted surfaces to bare metal without harming the integrity of the metal. The viscous formula is reusable and will not harm plastic, rubber, seal, soft metals, or non-oxide coatings such as paint and chrome. OER® Chemical Restoration Dissolve Rust works like an acid, but is safe for you and the environment. OER® Chemical Restoration Dissolve Rust is ideal for removing rust from any part or surface that can remain damp with the product until the rust is gone!

K86110 quart..... 19.99 ea



Dissolve

■ **OER® Dissolve Rust** removes rust leaving a bare metal surface.



Treat Rust

OER® Etch Metal

OER® Chemical Restoration Etch Metal inhibits rust and promotes paint adhesion for bare metal surfaces. This specially formulated liquid gently etches the metal, then leaves a zinc coating that helps chemically bind paint to the surface. OER® Chemical Restoration Etch Metal is non-toxic, non-flammable and reusable. Ideal for application on bare metal parts after sandblasting or using OER® Chemical Restoration Dissolve Rust.

K86114 quart..... 16.99 ea



Etch

■ **OER® Etch Metal** removes light surface rust and leaves a coating that bonds paint to the metal surface.



Convert Rust

OER® Convert Rust

OER® Chemical Restoration Convert Rust instantly neutralizes rust and converts the rusted surface, leaving a protective dark polymer coating. The inert coating provides an excellent primer base that seals out moisture to prevent future rust and corrosion. Protected surface can then be top coated with most paints. OER® Chemical Restoration Convert Rust can be applied with a brush, trigger bottle or a spray gun. Brush - A common household paint brush or foam applicator. Spray Gun - HVLP or conventional spray gun using a 1.0-1.4 nozzle at low pressure. Available in quart bottles.

K86112 quart..... 35.99 ea



Convert

■ **OER® Convert Rust** turns rust into a black, paintable polymeric coating that's ready for primer or top coat.



Seal Rust



thinner



one gallon



one quart



one pint



8 ounces



apply over bare metal



apply over rusty metal



01 gloss black 02 satin black 03 silver 05 gray 06 oxide red 08 off-white 15 galvanized steel

OER AUTHORIZED

RustSeal® Corrosion Barrier Coating



OER® Authorized RustSeal is a superior one part, ready-to-use, high-solids content, rust preventive, corrosion barrier coating, that is actually hardened by exposure to moisture. It is impervious to road salts and most every chemical. RustSeal flows out to a beautiful, rock-hard, tough ceramic-like coating that is tough to chip or scratch, and will not crack or peel. RustSeal is an incredible, single component, ready-to-use, high solids content, rust preventive coating with exceptional sealing properties. RustSeal is the most permanent cost effective solution for stopping rust and corrosion anywhere where it is a problem: home, automotive, industry, fleet, farm, and more! RustSeal is an enhancement that lasts. Water and air are locked out, therefore oxidation, the precursor to rust, cannot take hold. RustSeal is not intended for use as a final finish. To protect against unwanted cosmetic changes, top coat RustSeal with any opaque (solid color) paint system. After removing or treating rust on floors, subframes, or other under vehicle components, RustSeal Corrosion Barrier Coating works by isolating the surface from moisture and oxygen. This single component, high solids, rust stopping coating seals out the ultimate causes of rust, creating a rock hard non-porous barrier between the metal and rust promoting elements. Will not crack, chip, flake, or peel, and no hardeners or activators are needed. RustSeal is completely unaffected by salt, gasoline, oils, battery acids, hydraulic fluids, solvents, chemicals, or corrosives.

RustSeal® Coating

Available in your choice of a wide variety of colors and sizes. Select the part number for the size of the can you need, then add the 2-digit numerical color code to the end of the part number to specify your desired color when ordering.

KB42	eight ounces	specify color	19.99 ea
KB43	one pint	specify color	30.99 ea
KB44	one quart	specify color	43.99 ea
KB45	one gallon	specify color	143.99 ea

RustSeal® Thinner

Available in a wide variety of sizes. This product is designed specifically to thin our rust preventative coatings for cleanup purposes or for thinning the coating for use in a spray gun.

KB6200	eight ounces	thinner	9.99 ea
KB6400	one quart	thinner	17.99 ea
KB6500	one gallon	thinner	41.99 ea



Rust Removal & Prevention



BlackTop® Top Coat

BlackTop is a permanent, moisture cured, UV stable coating primarily used for top coating surfaces previously sealed with RustSeal® or any other paint/primer application. BlackTop is a high-performance protective coating specifically formulated to withstand dulling and fading caused by prolonged sunlight exposure. BlackTop may be used alone as a resilient coating but offers the ultimate rust protection when used in combination with the RustSeal® corrosion barrier coating as step 1. For the best top rust and ultraviolet protection, first apply RustSeal to permanently seal the surface and then top coat with BlackTop for an incredibly tough and professional looking finish. Like RustSeal®, BlackTop dries to a rock hard yet flexible coating that can be readily applied to chassis, coil springs, and lightweight panels. BlackTop also has high heat resistance and can be applied to almost all automotive applications except exhaust systems. BlackTop is intended as a final finish for parts that have been coated with RustSeal®. BlackTop will retain its color and sheen even after repeated or prolonged exposure to direct UV light and will not degrade.

Gloss Black

KB8101	12 oz. aerosol	gloss black	25.99 ea
KB8301	one pint	gloss black	33.99 ea
KB8401	one quart	gloss black	52.99 ea
KB8501	one gallon	gloss black	194.99 ea

Satin Black

KB8102	12 oz. aerosol	satin black	25.99 ea
KB8302	one pint	satin black	33.99 ea
KB8402	one quart	satin black	52.99 ea
KB8502	one gallon	satin black	194.99 ea

Flat Black

KB8112	12 oz. aerosol	flat black	25.99 ea
KB8312	one pint	flat black	33.99 ea
KB8412	one quart	flat black	52.99 ea
KB8512	one gallon	flat black	194.99 ea



DiamondFinish® Clear Coat

with Diamond Finish

DiamondFinish® Gloss Clear Top Coat is a permanent, moisture cured, UV stable coating primarily used for top coating surfaces previously sealed with RustSeal®, for top coating direct to metal, or to coat over any other paint/primer application. The clear coat formula can be applied direct to metal or over other coatings. This high gloss clear coat remains permanently flexible and is able to perform in the toughest environments without yellowing, cracking, or peeling. Apply directly to painted surfaces with minimal surface prep. Incredibly tough and hard like no other clear coat on the market. Can be applied with a brush (without leaving any brush marks), roller and conventional spray gun. Unlike two part coatings, no hardener is needed with DiamondFinish®, just stir and go. DiamondFinish® clear coat will cure without heat or UV lights in temperatures from 50 to 86 degrees Fahrenheit. Able to withstand the harshest of chemicals including fuels, solvents, battery acid, brake fluid, Ethanol, Methanol, MEK, Hydrochloric Acid, fertilizers, and Acetone. Graffiti resistant: because of its chemical resistance, graffiti just won't stick and can be removed simply with a solvent soaked rag. Great for high temperature automotive applications including the use on cylinder heads, engine blocks, brake components and even inlet manifolds, without yellowing up to 300 degree Fahrenheit.

KB8114	15 oz. aerosol	gloss clear coat	23.99 ea
KB8304	one pint	gloss clear coat	42.99 ea
KB8404	one quart	gloss clear coat	63.99 ea
KB8504	one gallon	gloss clear coat	209.99 ea



Frame and Chassis Coater Set

The KBS Frame Coater Set is a quart sized, 3 step set that includes enough products to Klean, Blast and Seal a full size car or truck frame, or any 50 sq. ft. area with 2 coats of paint coverage. Each set includes: 1 qt. of KBS Klean (an industrial strength water based cleaner/degreaser), 1 qt. of KBS RustBlast (a powerful rust remover/metal etch), 1 qt. of RustSeal® (chemically bonds to bare metal to form a permanent, moisture resistant finish that is flexible, yet won't crack, chip, or peel), 1 pair of gloves, 2 brushes, and a stir stick. Detailed instructions included.

KBS Frame Coater Set

KB57001	3 step set	gloss black	65.99 set
KB57002	3 step set	satin black	65.99 set

KBS All-In-One Chassis Coater Set

This complete set takes our popular Frame Coater Set to the next level with the addition of a pint of BlackTop top coat for a permanent final finish which withstands dulling and fading caused by prolonged sunlight exposure and 8 oz. of our #1 thinner. Set includes: the KBS 3 step Frame Coater Set, plus 1 pint of BlackTop top coat, 8 oz. #1 thinner, 1 pair of gloves, 2 brushes, and 2 stir sticks.

KB575101	all-in-one set	gloss black	104.99 set
KB575102	all-in-one set	satin black	104.99 set



Water Based and Solvent Based Undercoating

Whether you choose our water based or solvent based undercoat formulas, each produces a very tough, yet flexible film with excellent adhesion, and helps prevent road salt from eating away at your vehicle's metal and/or fiberglass. Offers excellent adhesion to metal or painted surfaces. Provides economical paintable durability, plus moisture resistance and corrosion resistance, all in a matte black finish. Also provides sound deadening by reducing road noise and vibration. You can attach the quart size can directly to a Schuitz applicator type spray gun or contents may be poured into a clean container pot that fits the applicator gun of your choice. Part #20018 undercoat gun is offered separately.

Water Based Asphalt Undercoat - Non-Paintable

Our VOC friendly, water based undercoating provides protection in wheel wells, gas tanks, frames, and floor pans. Being an asphalt base, it is not designed to be painted over. Dry to touch in one hour, fully cures in 24 hours. Excess coating may be removed with soap and water.

KB78400	one quart	covers up to 25 square feet	22.99 ea
KB78500	one gallon	covers up to 100 square feet	66.99 ea

Solvent Based Asphalt Undercoat - Non-Paintable

Being an asphalt base, it is not designed to be painted over. Dry to touch in one hour, fully cures in 24 hours. Excess coating may be removed with KBS #1 thinner.

KB76400	one quart	covers up to 30 square feet	22.99 ea
KB76500	one gallon	covers up to 120 square feet	66.99 ea

Solvent Based Rubberized Undercoat - Paintable

This formula is a superior solvent based rubberized undercoating that is paintable when dry. Formula dries to touch in one-hour, can be handled in 2 hours. Excess coating may be removed with KBS #1 thinner.

KB89570	16 oz. aerosol	covers up to 20 square feet	21.99 ea
KB77400	one quart	covers up to 30 square feet	22.99 ea
KB77500	one gallon	covers up to 120 square feet	66.99 ea

OER® Aerosol Coatings

OER

Interior Paint for 1965-73 Models!
Color Matched to Original Upholstery!



All new quart cans now available!

- Vinyl or Leather
- ABS Plastic or Urethane
- Acrylic or Lexan
- Steel or Aluminum
- Fiberglass and More!!!

PP910	PP911	PP912	PP913	PP914	PP915	PP916
PP917	PP918	PP919	PP920	PP921	PP922	PP923
PP924	PP925	PP926	PP927	PP928	PP929	PP930
PP931	PP932	PP933	PP934	PP935	PP936	PP937
PP938	PP939	PP940	PP941	PP942	PP943	PP944
PP945	PP946	PP947	PP948			



OER® Premium Quality Aerosol Interior Paint



OER's revolutionary formula provides 40% more coverage than standard dyes and lacquers, and actually penetrates and molecularly bonds to the surface to permanently seal in the color. Dries to the touch in 45 seconds, forms a complete bond in just 10 minutes. UV stable and color fast, it will not crack, flake, or peel. For use on vinyl, leather, plastic, metal, polycarbonate, polypropylene, polyurethane, acrylic, lexan, fiberglass, and recycled plastics. One formula does it all to save you time and money! When only the best will do, use OER's Premium Quality Interior Paint.

Important: Due to variances in factory vinyl material, paint could have up to a 10% variation color difference from original.

Note: Shipped within the continental U.S. only. Shipped ground only.

PP910	1966-67	dark red metallic	26.99 ea
PP911	1966-68	light turquoise metallic	26.99 ea
PP912	1966	medium embergo metallic	26.99 ea
PP913	1966-68	dark turquoise	26.99 ea
PP914	1967-68	dark blue metallic	26.99 ea
PP916	1967-68	dark saddle	26.99 ea
PP917	1967-68	light ivy gold	26.99 ea
PP918	1967-68	light parchment	26.99 ea
PP919	1967-68	saddle	26.99 ea
PP920	1967-73	charcoal ebony metallic	26.99 ea
PP921	1968	dark nugget gold	26.99 ea
PP922	1966-68	parchment metallic	26.99 ea
PP923	1968	dark red	26.99 ea
PP924	1968-69	dark red med	26.99 ea
PP925	1968-69	nugget gold	26.99 ea
PP926	1967-69	dark ivy gold	26.99 ea
PP927	1969	dark ivy metallic	26.99 ea
PP928	1969	dark red	26.99 ea
PP929	1969	dark red metallic	26.99 ea
PP930	1969-73	white	26.99 ea
PP931	1970-73	dark ginger	26.99 ea
PP932	1970	medium ivy green	26.99 ea
PP933	1970-73	medium ginger	26.99 ea
PP934	1970	vermillion	26.99 ea
PP935	1971-73	medium blue	26.99 ea
PP936	1971-73	medium vermillion	26.99 ea
PP937	1973	semi-gloss light avocado	26.99 ea
PP938	1973	semi-gloss medium avocado	26.99 ea
PP939	1965-73	satén clear coat	26.99 ea
PP940	1965-68	light turquoise metallic	26.99 ea
PP941	1965-70	medium blue	26.99 ea
PP942	1964-66	palomino metallic	26.99 ea
PP943	1965	red	26.99 ea
PP944	1965-66	light ivy gold metallic	26.99 ea
PP945	1965-66	medium ivy gold	26.99 ea
PP946	1965-68	light blue	26.99 ea
PP947	1965-68	white	26.99 ea
PP948	1965-73	black	26.99 ea

OER



OER® Interior/Exterior Plastics Surface Preparation Formulas

OER® manufactures a variety of surface preparation products to ready reproduction dash pads, headrests, door panels, padded pillar moldings, plastic parts, metal components, and other parts for the application of the top coat. Our item #PP1009 prep cleaner is a fast drying multi-surface cleaner that will remove any buildup of dirt, grease, or chemicals. Item #PP215 is a fast drying, clear adhesive promoter that is completely flexible and recommended for preparing metal, TPO, PP, and other interior and exterior parts for top coat. The item #PP618 metal and plastic primer is a self-leveling flexible light gray primer that adheres to most plastic and metal surfaces. It is compatible with many top coats, is heat resistant and requires no catalyst. It is great for filling small nicks and scrapes on a variety interior and exterior surfaces including TPO bumpers.

Note: Shipped within the continental U.S. only. Shipped ground only.

PP1009	colorbond prep cleaner	net wt. 4 oz.	13.99 ea
PP215	paint adhesion promoter	16 oz. aerosol can (net wt. 12 oz.)	31.99 ea

OER

OER® Carpet Restoration Formula



Formulated to enhance and restore faded, worn or stained surfaces, our OER® carpet dyes molecularly bond to carpeting for a finished result that will not wear off. A great product for restoring carpet or for spraying carpeted trim panels on consoles, door panels, and other carpeted trim. An easy way to renew worn or stained carpeted floor mats as well. Available in a convenient user friendly aerosol spray that dries in minutes. Available in a variety of colors to match or accent your interior. Order each color individually in a 16 oz. aerosol can (net wt. 12 oz.) or buy the case of six cans and save!

Note: Shipped within the continental U.S. only. Shipped ground only.

Individual 16 oz. Aerosol Can (Net Weight 12 oz.)

PP900	black	32.99 ea
PP901	taupe	16.99 ea
PP902	gray	32.99 ea
PP903	dark gray	32.99 ea
PP904	crimson red	32.99 ea

Case of Six Cans

PP905	black	178.99 cs
PP907	gray	178.99 cs
PP908	dark gray	178.99 cs
PP909	crimson red	178.99 cs



OER

OER



OER® Aerosol Coatings



K89260
gray primer



K89265
clear



K89543
factory black

- Correct Original Colors
- Simple to Use Spray Can
- Cost Effective/No Waste
- Heat Resistant to 400 Degrees F
- High Hiding Formulation
- Manufactured in the USA!



OER® Classic Blend Engine Paint



Classic Industries® is proud to present OER® Classic Blend Engine Paints for your classic vehicle restoration. Each product offers maximum coverage and adhesion to air cleaners, engine blocks, heads, intake manifolds, valve covers, water pumps, oil pans, transmission cases, and more. Effective against rust, gas, oil, grease, salt, humidity, and intermittent temperatures up to 400 degrees F. Spray gun results without the mess and hassle associated with mixing paint and cleaning the equipment. Available individually in a 16 oz. aerosol can (net wt. 12 oz.).

Note: Shipped within the continental U.S. only. Shipped ground only.

K89260	gray primer	16 oz. aerosol can (net wt. 12 oz.)	19.99 ea
K89265	gloss clear	16 oz. aerosol can (net wt. 12 oz.)	19.99 ea
K89543	factory high gloss black	16 oz. aerosol can (net wt. 12 oz.)	19.99 ea



Motor Coater® Engine Refinishing Kit



KBS Motor Coater engine paint set has everything you need to do a superior job when you paint your engine, and even includes the step-by-step instructions needed to help you do it right. Motor Coater is easy to apply, offers superb coverage, and yields a self-leveling professional looking finish brushed or sprayed. These engine enamels provide deep, rich pigmented colors for excellent coverage. Your engine will be a show stopper at this DIY price... too bad it's kept under the hood! First, KBS special engine cleaner and degreaser eliminates all dirt, grease, and oil. Next, use the RustBlast to dissolve rust and prep the metal. Then, rustproof and top coat your engine with KBS Motor Coater. All of this comes in one convenient set with thinner, gloves, a brush, and a stir stick.

RE1036	all years	universal Gloss Black	64.99 set
RE1057	all years	universal Aluminum	64.99 set
RE1056	all years	universal Daytona Yellow	64.99 set
RE1065	1967-up	Ford Corporate Blue	64.99 set

OER® Metal Mimic FX Coating



OER® Metal Mimic FX high-performance coatings were developed to mimic the appearance of bare metal so that you can refinish and protect all of the components that were originally left unpainted by the factory. Items such as cast iron housings, aluminum housings, stainless steel parts, galvanized parts and even chrome can now be coated with a "factory correct" looking finish that is extremely durable and amazingly close to the original color.

Note: Ships ground only. No air shipment.



Individual 16 oz. Aerosol Can (Net Weight 12 oz.)

K89500	Aluminum Blast Coating	16.99 ea
K89502	Cast Blast Cast Iron Gray Coating	14.99 ea
K89501	Galv Blast Zinc Coating	18.99 ea
K89091	Stainless Steel Coating	19.99 ea
K0090	Cast Iron Gray - High Temp	19.99 ea



OER® Factory Black Coatings



OER® factory black coatings are available in a variety of sheen levels to help you achieve the correct factory look for your restoration. Our Ultra Flat sheen is an extremely flat non-glare finish. The next level up is our low gloss formula followed by the semi-gloss and finally our exclusive high gloss formulation. Whatever you are spraying, we have the correct sheen for an original factory black look.



Note: Ships ground only. No air shipment.



Factory Black Set - Contains All Four Formulations

Buy the complete OER® Factory Black set and you will have all the necessary sheen levels for a correct factory look no matter what component you are spraying. K89550 4 can set, all four sheens..... 59.99 set

Ultra Flat Factory Black

Extremely flat non-glare finish that is perfect for a variety of uses including underhood items like hood hinges, latches, carburetor parts, seat adjusters, pulleys, linkage, nuts, bolts, washers, screws, clips, brackets, and more. Provides a durable flat black zinc phosphate look without the high cost of black zinc phosphate plating.

K89540	16 oz. aerosol can (net wt. 12 oz.)	19.99 ea
K89590	case of six cans	89.99 ea

Low Gloss Factory Black

A durable low gloss coating that provides a factory fresh appearance on the frame, transmission crossmember, leaf spring shackles, control arms, firewall, cowl, brake components, AC compressor, or anywhere else a low gloss, but not quite flat black finish is desired.

K89541	16 oz. aerosol can (net wt. 12 oz.)	19.99 ea
K89592	case of six cans	89.99 ea

Semi-Gloss Factory Black

A durable low gloss coating that provides a factory fresh appearance on the underside of the hood or on inner fender skirts, battery tray, radiator support, master cylinder, front control arms, brackets, pulleys, fan blade, smog pump tail housing, starter, power steering assembly, horns, sway bars, wiper motor assembly, and suspension components or anywhere else a semi-gloss black finish is desired.

K89542	16 oz. aerosol can (net wt. 12 oz.)	19.99 ea
K89593	case of six cans	89.99 ea

High Gloss Factory Black

A high gloss coating that is perfect for restoration of engine assemblies, valve cover, radiator tanks and brackets, ignition coils, voltage regulator covers, suspension springs, wheel inserts, shock absorbers, rear axle housings, differential tubes, brake backing plates, and any other parts where a durable gloss black finish is desired.

K89543	16 oz. aerosol can (net wt. 12 oz.)	19.99 ea
K89594	case of six cans	89.99 ea



WARNING: Cancer and Reproductive Harm - www.P63Warnings.gov

OER® Aerosol Coatings

OER® Rubberized Undercoating

A black, rubberized undercoating for all automobile under surfaces. Sprays evenly and dries completely to a smooth consistency. Can be top coated with any type of automotive finish. Prevents rust, reduces road noise, seals out water, flames, road chemicals, and dust. Special formula greatly reduces lingering odor associated with most other brands of undercoating. No "bleed through" when top coated. Use on undersides of panels, hoods and deck lids, trunk interiors, section repairs, weld joints, rust holes, or on chassis parts. 20 oz. aerosol can (net wt. 18 oz.) or buy a case and save!

Note: Ships ground only.

No air shipment.

K89570 20 oz. can 21.99 ea
K89669 case of six cans 86.99 cs



OER® Original Hue Paint

OER® Original Hue paints are specially formulated to perfectly match the factory colors of specific components installed on your vehicle at the factory. Unique shades are available so you can duplicate the OE finishes on a variety of parts including Saginaw steering boxes and Delco shock absorbers from the 60's and 70's. 16 oz. aerosol can (net wt. 12 oz.).

Note: Ships ground only. No air shipment.

Saginaw Steering Box Blue/Gray
K89531 16 oz. can 19.99 ea

OER® Black Wrinkle Finish

A durable and long-lasting finish which has a unique wrinkled texture. Excellent hiding qualities provides an excellent finish for hiding surface imperfections such as pitting, scratches, or chips. Extremely durable formula resists oil, gas, and grease. Can be used where harsh conditions break down conventional coatings. Comes in 12 oz. net wt. aerosol can. Great for valve covers, air cleaners, dash components, and more. 16 oz. aerosol can (net wt. 12 oz.) or buy a case and save!

Note: Ships ground only. No air shipment.

K89548 16 oz. can 16.99 ea
K89549 case of six 69.99 cs



Hi-Temp Exhaust Coat

A fast drying coating designed to withstand temperatures up to 1200 degrees F on a continuous basis. Forms a porcelain like bond after curing. Resists blistering, peeling, discoloration, or loss of adhesion. Excellent for headers, manifolds, mufflers, pipes, and more.

Note: Ships ground only.

No air shipment.

16 oz. Aerosol Can (Net Wt. 12 oz.)
K89555 silver 16.99 ea
K89556 black 19.99 ea
K89559 cast iron gray 19.99 ea

Case of Six Cans

K89557 silver 79.99 cs
K89558 black 79.99 cs
K89559 cast iron gray 79.99 cs



OER® High Solids Detail Coating

A superior professional grade coating formulated for restorations where maximum performance is required. These high solid paints do not run or sag, and provide twice the coverage of conventional aerosol emulsions. Each 20 oz. (net weight 16 oz.) can offers the highest solid content (40%) of any aerosol paint on the market for maximum coverage.

Note: Ships ground only. No air shipment.

Individual 20 oz. Aerosol Can (Net Weight 16 oz.)

K89577 gloss black 15.99 ea
K89578 flat black 15.99 ea
K89579 aluminum 18.99 ea
K89580 stainless steel 14.99 ea
K89581 dark gray 15.99 ea

Case of Six Cans

K89677 gloss black 69.99 cs
K89678 flat black 69.99 cs
K89679 aluminum 69.99 cs
K89680 stainless steel 69.99 cs
K89681 dark gray 69.99 cs



OER® Professional Grade PBE Primer

OER® is pleased to offer our professional grade primers specifically formulated to meet the performance needs of body shop personnel but conveniently packaged for the automotive enthusiast. Tough and dependable, these primers adhere extremely well, prevent rust and corrosion and enhance the quality and appearance of the finished product. Large fan spray head gives a professional looking application. Eliminates the need for a spray gun for small repairs, reduces cleanup time.

OER® Self-Etching Sanding Primers

Manufactured with a modified acrylic resin to give you excellent adhesion to all types of metal, aluminum and prepared surfaces. Dries to the touch in 10 minutes. Dry to sand or top coat in 15 minutes. Available individually in 20 oz. (net weight 15 oz.) cans or in case of six.

K89560 gray 15.99 ea
K89561 black 16.99 ea
K89562 red oxide 19.99 ea

OER® High Solids Sanding Primers

A superior professional grade primer formulated with 40% solids to provide twice the coverage of conventional aerosol primers. Fewer cans needed to complete the job to save you time and money. Protects against rust and corrosion. Provides excellent adhesion with single coat hiding capability and minimum over spray. Available individually in 20 oz. (net weight 15 oz.) cans or in case of six.

Note: Shipped within the continental U.S. only. Shipped ground only.

K89575 red oxide 19.99 ea
K89576 gray 14.99 ea

OER® Zinc Phosphate Primers

Specially formulated primer that is chromate free and chemically bonds with iron, steel and aluminum to form a hard, highly adherent coating. It has exceptional corrosion resistance. Ideal for spot repair of damaged coatings. Provides exceptional protection against rust and corrosion. Compatible under two component coatings. Forms a hard, highly adherent, water resistant coating that can be painted or left as is. Dries to the touch in 10 minutes. Available individually in 20 oz. (net weight 17 oz.) cans or in case of six.

Note: Shipped within the continental U.S. only. Shipped ground only.

K89565 green 15.99 ea
K89566 yellow 14.99 ea

OER® Spray Galvanized Weld-Thru™ Coating

A smooth, cold galvanizing compound that chemically fuses to bare steel and forms an extremely rust resistant barrier. Perfect for application on the inside of newly installed panels where rust prevention of new metal is important, but where the part treated will not be painted. Fast dry, sag free spray that is abrasion resistant. Stops rust creep, resists chemicals and is rust inhibitive. Apply it to sheet metal pieces before installation, then weld as usual. The coating will not affect the quality of the weld, and will remain rust preventative properties. Available individually in 16 oz. (net weight 12 oz.) cans or in case of six.

Note: Shipped within the continental U.S. only. Shipped ground only.

K89567 gray 19.99 ea



Experience Spray Gun Control!

Transform your aerosol container into a versatile spray gun. Using it's unique "lock-on" device, simply snap it on and spray! You'll experience better control for applying steady even coats, easy handling and comfort, all adding up to reduced fatigue. Use with paints, lubricants, cleaners, craft sprays, and more! Universal fit for most aerosols.

K81005 can gun 7.99 ea

OER® Aerosol Coatings



OER® Factory Wheel Coatings

OER® Factory Wheel Coatings are available in a variety of original colors so you can achieve the correct factory look on the restoration of your wheels. Eliminates the need for expensive custom paint mixing and greatly simplifies the restoration process by providing spray gun results without the hassle and mess of a spray gun or the need for an air compressor.

Note: Shipped within the continental U.S. only. Shipped ground only.

Argent Silver

Correct color and sheen for the restoration of Ford wheels. Makes your wheels look like they just rolled out of the factory.

K89320 16 oz. aerosol can (net wt. 12 oz.) 19.99 ea

Low Luster Gray Coating

Correct color and sheen for the restoration of mag wheels that call for a unique shade of gray. This gray was used on the backside and in some cases both sides of steel factory wheels. Can also be used on jack mechanism and jack base on some models.

K89410 16 oz. aerosol can (net wt. 12 oz.) 19.99 ea

Wheel Insert Paint - Charcoal Gray Metallic

Charcoal gray metallic luster for the restoration of the wheel insert area on wheels. Correct color, tone and luster for a factory fresh appearance.

K89330 16 oz. aerosol can (net wt. 12 oz.) 19.99 ea

OER® Trunk Spatter Paint



Restoration grade spatter paint for the discriminating restorer who wants to accurately replicate the original texture and finish in their trunk. Produced by the original manufacturer for an authentic texture and color match. These water soluble paints are designed to be applied with a paint gun and do not require a clear coat. One quart required per vehicle. Includes instructions.

Important: Originally applied trunk spatter paint with a Binks 2100 gun with a 200 tip and a 66 fluid nozzle with an internal mix air cup.

K86130 quart black and aqua 109.99 ea
K86131 quart gray and white 109.99 ea



K86130

OER® Underhood Detail Paint

The perfect alternative to expensive zinc phosphate plating.

A variety of choices are available to correctly refinish underhood items such as hood hinges, hood latch and safety catch, carbs, pulleys, linkage, nuts, bolts, brackets, clips, screws, and more with a durable flat or non-gloss finish that mimics the appearance of zinc phosphate plating.

16 oz. aerosol can (net wt. 12 oz.) 19.99 ea

Note: Ships ground only. No air shipment.

K89540 factory black 19.99 ea
K89520 dark gray 19.99 ea



OER® Clear Enamel

Provide extra durability and color depth on a variety of surfaces. OER® Clear Enamel will enhance the appearance of engine components, wheels, suspension components, and other painted and unpainted surfaces where a gloss clear top coat is desired. Withstands rust, gas, oil grease, salt and intermittent temperatures up to 400 degrees F. 16 oz. aerosol can (net wt. 12 oz.)

Note: Ships ground only. No air shipment.

K89265 gloss clear 19.99 ea



OER® Trunk Refinish Kit



Restore the trunk area of your classic car to a factory original appearance and provide the ultimate protection from the elements. First prime the area to be painted. On bare metal, you should use a self-etching primer. Next, spray your base coat. Then spray your spatter coat and let dry thoroughly. Finally, coat the entire surface with our clear topcoat to seal the surface. Contains everything you need to refinish the trunk of your classic vehicle including 2 cans of primer, 3 cans of spatter paint, and 2 cans of clear top coat. Buy the kit and save!

Note: Ships ground only. No air shipment.

Kit with Standard Gray Primer

K51490 black and gray 104.99 kit
K51491 black and aqua 104.99 kit
K51492 gray and white 109.99 kit

Kit with Self-Etching Gray Primer

K51493 black and gray 109.99 kit
K51494 black and aqua 109.99 kit
K51495 gray and white 109.99 kit

Spatter Coat Only - 16 oz. Aerosol Can (net wt. 12 oz.)

K51496 black and gray 12.99 ea
K51497 clear top coat 15.99 ea
K51498 gray and white 12.99 ea
K51499 black and aqua 12.99 ea



black/gray



black/aqua



gray/white



Central Pneumatic General Purpose Spray Gun

This general purpose paint spray gun is designed with a rugged lightweight body that makes it easier to keep a steady hand while you paint. The spray gun sprays all light to medium viscosity materials including lacquer, enamel, urethane, polyurethane, and primer. This is a great paint spray gun for a wide range of uses in any home garage or professional auto shop. Made from aluminum.

- Conventional material transfer
- Average air consumption 9.5 cfm @ 50 psi
- Lightweight, durable Nylon pistol and lid construction with spun aluminum cup
- Siphon feed
- Working pressure 50 to 70 psi
- Fluid and pattern control: 1-1/2 in. to 9-1/2 in. fan spread

A9250105 34.99 ea



A9250101

A9250102

Binks 2100 Spray Gun

This is the style gun that was used at the factory to apply the trunk spatter paint in the correct consistency and pattern. Includes the correct fluid nozzle, needle, and air nozzle. Will spray all conventional coatings, including those with high solids. Features a forged aluminum body that has been precision machined, and brass air nozzles and knobs that are nickel-plated.

Note: Pressure pot required & not included.

A9250101 spray gun 369.99 set
A9250102 2 qt. pot 399.99 set
A9250103 5' air hose 45.99 ea
A9250104 5' fluid hose 65.99 ea