

Chevy II/ Nova V.I.N. Information

V.I.N. Plate Location

1962-67 Models have the Vehicle Identification Number located on a steel plate riveted to the left door jamb on the hinge pillar.

1962-64 Models

CHEVROLET							
2	0	1	6	9	W	1	00001
Year	Series	Assembly Plant	Sequential Production Number				

1962-64 1st Digit: Model Year:	
2	= 1962
3	= 1963
4	= 1964

1962-64 2nd through 5th Digits: Model Series:				
Series	4 Cyl.	6 Cyl.	Model	
1962				
100	01	02	11, 69, 35	
300	03	04	11, 69, 45	
Nova	---	04	41, 37, 67, 49, 35	

1963				
Model	4 Cyl.	6 Cyl.	Model	
100	01	02	11, 69, 35	
300	03	04	11, 69, 45	
Nova	---	04	37, 67, 49, 35	

1964 - V8 engines were an option and are coded as a 6 Cylinder Series				
Model	4 Cyl.	6 Cyl.	Model	
Chevy II	01	02	11, 69, 35	
Nova	---	04	11, 37, 47, 69, 35	

Model	Body Style
11	2 Door Sedan
35	4 Door Station Wagon - 6 Passenger
37	2 Door Sport Coupe
41	2 Door Sedan (1962 Only)
45	4 Door Station Wagon - 9 Passenger (1963 Only)
47	2 Door Sport Coupe Super Sport (1964 Only)
49	4 Door Sedan
67	2 Door Convertible
69	4 Door Sedan

1962-64 6th Digit: Assembly Plant:	
G	= Framingham, Massachusetts
K	= Kansas City, Missouri
N	= Norwood, Ohio
O	= Oakland, California
W	= Willow Run, Michigan

V.I.N. Plate Location

1968-1979 Models have the Vehicle Identification Number located on a steel plate riveted to the upper dash panel, visible through the windshield.

1965-71 Models

CHEVROLET							
1	1	1	6	9	5	W	100001
Series	Model	Year	Sequential Production Number				

1965-71 1st Through 5th Digits: Model Series:					
Series	4 Cyl.	6 Cyl.	8 Cyl.	Model	

1965					
Chevy II	111	113	114	11, 69, 35	
Nova	---	115	116	37, 69, 35	
Super Sport	---	117	118	37	
1966					
Chevy II	111	113	114	11, 69, 35	
Nova	---	115	116	37, 69, 35	
Super Sport	---	117	118	37	

1967					
Series	4 Cyl.	6 Cyl.	8 Cyl.	Model	
Chevy II	111	113	114	11, 69, 35	
Nova	---	115	116	37, 69, 35	
Super Sport	---	117	118	37	

1968					
Series	4 Cyl.	6 Cyl.	8 Cyl.	Model	
Chevy II	111	113	114	27, 69	
Nova	---	115	116	37, 69, 35	
Super Sport	---	117	118	37	

1969					
Series	4 Cyl.	6 Cyl.	8 Cyl.	Model	
Nova	---	115	116	37, 69, 35	
1970					
Nova	111	113	114	27, 69	
1971					
Nova	---	113	114	27, 69	

Model	Body Style
11	2 Door Sedan
27	2 Door Coupe
35	4 Door Station Wagon - 6 Passenger
37	2 Door Sport Coupe
69	4 Door Sedan

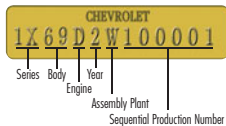
1965-71 6th Digit: Model Year:	
5	= 1965
6	= 1966
7	= 1967
8	= 1968
9	= 1969
0	= 1970
1	= 1971

1965-71 7th Digit: Assembly Plant:	
N	= Norwood, Ohio
O	= Oshawa, Ontario, Canada
W	= Willow Run, Michigan



Chevy II/ Nova V.I.N. Information

1972-79 Models



1972-79 1st Through 4th Digits: Model Series:			
Model	Series	Body	Style
1972			
Nova	1X	27	2 Door Coupe
Nova	1X	69	4 Door Sedan
1973-74			
Nova	1X	27	2 Door Coupe
Nova	1X	17	2 Door Hatchback
Nova	1X	69	4 Door Sedan
Custom	1Y	27	2 Door Coupe
Custom	1Y	17	2 Door Hatchback
Custom	1Y	69	4 Door Sedan
1975			
Nova / S	1X	27	2 Door Coupe
Nova	1X	17	2 Door Hatchback
Nova	1X	69	4 Door Sedan
Custom / LN	1Y	27	2 Door Coupe
Custom / LN	1Y	17	2 Door Hatchback
Custom / LN	1Y	69	4 Door Sedan
1976-77			
Nova	1X	27	2 Door Coupe
Nova	1X	17	2 Door Hatchback
Nova	1X	69	4 Door Sedan
Concours	1Y	27	2 Door Coupe
Concours	1Y	17	2 Door Hatchback
Concours	1Y	69	4 Door Sedan
1978-79			
Nova	1X	27	2 Door Coupe
Nova	1X	17	2 Door Hatchback
Nova	1X	69	4 Door Sedan
Custom	1Y	27	2 Door Coupe
Custom	1Y	69	4 Door Sedan

1972-79 5th Digit: Engine Code			
Year	Code	C.I. / Litre	Induction
1972-79	D	250	1 bbl.
1972-73	F	307	2 bbl.
1975-76	G	262	2 bbl.
1979	G	305	2 bbl.
1972-75	H	350	2 bbl.
1972	J	350	4 bbl.
1973-74	K	350	4 bbl.
1976-79	L	350	4 bbl.
1976	Q	305	2 bbl.
1977-78	U	305	2 bbl.

1972-79 6th Digit: Model Year:	
2	= 1972
3	= 1973
4	= 1974
5	= 1975
6	= 1976
7	= 1977
8	= 1978
9	= 1979

1972-79 7th Digit: Assembly Plant:	
K	= Kansas City, Missouri
L	= Van Nuys, California
N	= Norwood, Ohio
T	= Tarrytown, New York
W	= Willow Run, Michigan

Model Year Production

Note: These numbers are not exact. They were compiled from reliable resources, but, even Chevrolet, or GM, does not know exactly how many Chevy II/Novas were delivered to the public.

1962	=	326,607
1963	=	372,626
1964	=	191,691
1965	=	118,000
1966	=	133,400
1967	=	106,500
1968	=	147,570
1969	=	251,903
1970	=	315,122
1971	=	194,878
1972	=	349,733
1973	=	369,511
1974	=	390,537
1975	=	273,014
1976	=	334,728
1977	=	365,264
1978	=	288,109
1979	=	94,721



Classic
INDUSTRIES
 Parts & Accessories

INNOVATION **SS**

'66 NOVA



This 1966 Nova proves that a little bit of work and the right choice in parts can make a really exciting hot rod. From the 2006 SEMA show to a feature in Chevy High-Performance, this car received a lot of attention.

These cars have been built to demonstrate how the Classic Industries catalog can be used to make any project car stand out from the crowd.

Whether you're returning your car to showroom condition, building the ultimate resto-mod, or simply keeping your classic in fighting shape. Classic Industries® leads the way with an unparalleled selection of parts from the most trusted names in the field.

CHEVY
 HIGH PERFORMANCE



Join host Dan Woods for the complete story on some of the most outrageous and illustrious restored and resto-mod classics! See the Classic Industries "Sweet Motion" Impala and '53 Shop Truck and other projects from start to finish.

CCR04	1964 Impala/1975 Bricklin.....	12.99 ea
CCR05	1953 Pickup/1970 'Cuda.....	12.99 ea
CCR06	1969 Yenko Tribute/1940 Mercury Coupe.....	12.99 ea



Powerplant

GM Performance Parts 350 H.O. Crate Motor

Transmission

B&M Turbo-350

Cooling System

AFCO Racing Products

Rear Axle

12 Bolt Posi with 3.42 gears

Brakes

Willwood Engineering

Front Suspension

Heidt's Hot Rod and Muscle Car Parts

Rear Suspension

Calvert Suspension

Interior

Parts Unlimited, Inc.

Gauges

OER® / AutoMeter

Wiring Harness

American Autowire – Factory Fit



See the Classic Industries® showcase restorations come to life on Chop, Cut, Rebuild!



VISIT OUR NEW SHOWROOM!

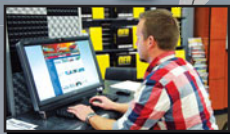
Conveniently Located in Huntington Beach, CA!

- 10 minutes from the beach
- 20 minutes from Knott's Berry Farm
- 20 minutes from John Wayne Airport
- 30 minutes from World-Famous Disneyland



Bring the Family!

Step past the featured display car and take a seat in front of our entertainment center, designed to create a comfortable atmosphere for enthusiasts, their children, and their significant others.



Discover Our Products

Browse our unparalleled selection of restoration, performance parts and accessories at these convenient computer terminals. Discover the latest products from Classic Industries® for your project.

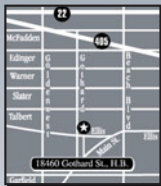


Save on Shipping with Will Call

Want to pickup your order at the showroom and save the shipping costs? With our immense inventory of parts, we are SoCal's biggest parts store for classic GM and Mopar models.

Automotive enthusiasts seeking personal service have always been invited and encouraged to visit our location in Huntington Beach, California. We have recently expanded our showroom facility to make the experience worth the trip for our customers and their families.

More than mere parts counter, our new showroom has something for everyone. A rotation of show cars is on display, including award-winning Classic Industries restorations such as the "TWISTED" Duster, "CAMOTION" Camaro, and "INNOVATION" Nova. Information kiosks let you browse electronically while our entertainment center keeps spouses and younger enthusiasts occupied. Naturally, the latest gift and apparel items are presented along with the newest reproduction parts. Our friendly, knowledgeable staff is ready and able to help with questions and ideas to make your restoration project smooth and easy.



18460 Gothard Street
Huntington Beach, CA 92648

Showroom Hours

Monday thru Friday
8:00 a.m. - 5:00 p.m.

Saturday
10:00 a.m. - 3:00 p.m.

Sundays and Holidays
Closed

THE ALL NEW www.classicindustries.com



Improved Account Management!

Managing your account couldn't be simpler! Update your information, track your orders, buildup and modify your wish list, and more, all at your convenience.



All New Shopping Experience!

Our redesigned website is much more than just a sleek new look. Improved usability and a streamlined checkout process eliminate the hassle of ordering parts for your project!



More Product Detail!

Multiple product views give you the full picture of what you're ordering. "Also Fits" information and the "Ask a Tech" feature ensure that you get the right part for your project!



Improved Product Search!

New search capabilities make it easier than ever to browse our product line! "Shop by Brand" lets you check out the latest from the names you know and the brands you trust!



Social Media Integration!

Social media updates, news, videos and articles are easily accessible right from the main page! See posts from our upcoming Classic Industries® blog site blog.classicindustries.com/



At A Glance!

Scroll through the most popular items Classic Industries® has to offer using our new *Most Popular*, *Top Sellers* and *Most Viewed* tabs!



SOCIAL MEDIA



Your All-Access Pass to Classic Industries®

Receive special sales codes, promotions and product updates on our Facebook, Google + and Twitter pages!



Follow us on Facebook, Google + and Twitter! Receive special sales codes, promotions and product updates. Stay informed on special events and interact with other automotive enthusiasts, staff and fans of Classic Industries®!

www.facebook.com/classicind

Cruise on over to Classic Industries' new video media website where you can access a library of *Overhaul'n*, *Chop 'n' Rebuild*, and *My Classic Car* episodes, Classic Industries® television commercials and how-to videos to guide you through installation processes.

www.classicindustries.tv



Watch up-to-date instructional videos, television commercials and interact with our community of automotive enthusiasts!

Four Ways to Order!



ORDERING BY PHONE TOLL FREE 800-854-1280

In the continental United States, Hawaii and Alaska. Outside the U.S. call 714.847.6887.

Mon-Fri 8:00-5:00 Sat 10:00-3:00, P.S.T.
(Closed Sundays and holidays)

Information you'll need when ordering by Phone:

Customer Number

Found on back cover of your catalog above your name, this number allows Classic Industries® to quickly access your information. If you do not have a customer number, a new one will be given to you when placing your order.

Billing and Shipping Address

Please have the billing and shipping address available. Credit card orders are verified by name and address before shipping. Your order can be shipped to a different address, provided the cardholder's name and address match the credit card used. You may be asked to contact your credit card company to have the shipping address added to your account.

Year and Model of Vehicle

To provide the best possible service, we may require the year and model of your vehicle. This helps verify that the parts you order are correct for your car.

Part Numbers

All Classic Industries® products are listed with a part number. If possible, please have the part numbers of the products you're ordering available before calling to make the ordering process faster and more convenient.



ONLINE ORDERING www.classicindustries.com

Classic Industries® offers online ordering directly through our website. Log on to classicindustries.com and order on-line. Online ordering is available 24 hours a day 7 days a week for your convenience.



ORDERING BY MAIL Mail Your Completed Order Form To:

Classic Industries®
18460 Gothard St.
Huntington Beach, CA 92648
Attention: Order Dept.



ORDERING BY FAX TOLL FREE 800-300-3081

In the continental United States, Hawaii and Alaska. Outside the U.S. call 714.847.6887.

Important: For assistance with your order form, see page entitled "How To Fill Out Your Order Form".

Service Excellence From the Restoration Leaders!



You No Longer Have To:

- ✗ Pay excessive fees to protect your merchandise
- ✗ Contact the carrier yourself
- ✗ File a damage claim yourself to have the carrier inspect the damaged items
- ✗ Send the damaged items back at your expense

With Classic Industries® the worry is eliminated!

PROCEDURE FOR RETURNING SHIPPING DAMAGES

We handle the claim so you don't have to! If any part you receive is damaged during shipping and handling, simply contact our customer service department toll-free at 800.854.1280 within two business days.

After verifying the damage, Classic Industries will issue a pickup call tag through the carrier that shipped the products. The carrier will pickup the damaged goods from your address and return them to us at no expense to you. After the product has been inspected, our customer service department will send a replacement part.

In order to ensure replacement of damaged products, please return items in their original box and packaging. Failure to do so may result in the claim being denied. Someone must be available at the pickup address to supply the damaged products when the carrier arrives. If the carrier is unable to pickup the products for any reason, the customer may be required to return the products at their expense.

Note: Some products are excluded from damage call tag pickup. Call a customer service representative for information about products that are not eligible.

ENJOY THE BENEFITS!

Money Back Guarantee



At Classic Industries®, we take pride in the quality of the products we offer and back it up with a 100% Money Back Guarantee. If for any reason you are not satisfied with a product or purchase, you can return the product within 30 days of receipt for a full refund, credit or exchange.

Not all restoration parts are created equal. But at Classic Industries®, we research each and every product we sell to make sure our customers are getting the highest quality products in the market. We have decades of experience in product selection and we painstakingly scrutinize every product we offer for quality manufacturing, materials, and craftsmanship before we will offer it in any of our catalogs. Many of our employees are automotive enthusiasts themselves. In fact, many were customers prior to becoming employees, so we understand the needs of the modern classic car enthusiast. Our product procurement specialists have made it their goal to select restoration products that have been manufactured using modern technology and materials with an emphasis on originality, longevity, and attention to detail. What else would you expect from the company that started it all? Classic Industries® is the name you can trust, and we'd like for you to consider us as your partner in restoration. When a company

continually offers a quality product for a reasonable price and backs up every sale with the best customer service in the industry, people come back! That's why Classic Industries® has been the leader in restoration for almost four decades. So, if you haven't already decided for yourself that Classic Industries® is the most logical choice as your restoration parts supplier, then check out our Money Back Guarantee. If for any reason you are not 100% satisfied with a product or purchase, you can return the product within 30 days of receipt for a full refund, credit, or exchange.

- ✓ **Lowest Prices Guaranteed!**
- ✓ **The Finest Quality Reproductions!**
- ✓ **No Fault Product Protection Offer!**
- ✓ **100% Satisfaction or Your Money Back!**



Price Match Guarantee



If you find it for less we'll match the price!

Classic Industries® will match any competitor's current advertised price for an identical product. Simply send us a copy of the competitor's current advertised price from a catalog, advertisement or website (with URL) and we'll match the price. The price match guarantee is available at the time the order is placed and for in-stock merchandise only. Price matching will be determined by a competitor's most current retail published price and is limited to competitors within the Restoration Industry.

Important: In an effort to provide our retail customers with the most competitive pricing available, we will match our current competitor's pricing. Price matching will be determined by a competitor's most current retail-published price and is limited to competitors within the "Restoration Industry". Performance parts and special orders are exempt from price matching policy. Classic Industries® reserves the right to decline price matching if

pricing is deemed to be a special offer, a sale or closeout price, or a non-current price. Competitors sale pricing, inventory reductions, close outs, special promotional offers, etc. may be exempt from the "price match" guarantee. The guarantee is subject to the terms and conditions of Classic Industries® current policies.

Classic Industries® will generally contact competitors to confirm that the published price is current due to market changes, demand or availability. Price matching supersedes all other promotional offers and on sale pricing. If Classic Industries® matches a price from a competitor, additional discounts on that product or products may not apply. If the standard retail price of a product is higher than the competitor's price and an applied discount reduces the price below the competitor's pricing, the now discounted or sale pricing will prevail. We reserve the right to change or revoke this offer at any time without notice. Classic Industries® reserves the right to decline price matching.

Think Of Us As Your Partner In Restoration!

A restoration can take years! We understand the complications and problems that can occur when ordering precious parts for your project car. If you are like most people, you want perfection. The many different elements that make up a restoration isn't just limited to the parts you install. You sometimes need to rely on other outside elements such as body shops, painters, upholstery specialists and parts suppliers. That's where we come in. We offer the quality parts you want without all the guesswork. We carry one of the largest inventories of restoration products and accessories the market has to offer. What's more, you can rely on our nearly

40 years of experience to help you through the rough spots when you need it. Our tech advisors are always ready and willing to discuss any problem you may have concerning the parts for your vehicle and your restoration. Unlike other companies, we give you knowledgeable sales representatives, one of the largest inventories in the business, quick and efficient delivery, Toll Free ordering, and the experience to back it up. If you're not absolutely 100% satisfied with the products you receive. We'll refund 100% of your money! Classic Industries® - your partner in restoration!

Form of Payment How to Order



CREDIT CARDS

Classic Industries® accepts Visa, MasterCard, American Express, Optima, and Discover for your convenience. When placing your order, be sure to indicate the card holder's name, address, home phone, business phone, credit card number and expiration date and billing address (if different from person placing order). A security code is required for credit card purchases. Please have your credit card readily available when placing your order. Minimum order is \$20.00. New or 1st time customers who are paying by credit card must have the order shipped to the cardholders billing address for the first order. Invalid or non-matching billing addresses could delay your shipment.

CERTIFIED CHECKS

Classic Industries® will accept certified checks for your mail order. Be sure to include customer number and/or reference invoice number. Contact your bank to issue a certified check in the amount due for your order. All orders paid by certified check are held up to 15 days pending clearance.

PERSONAL CHECKS

To use personal checks or business checks on prepaid orders, the name, address, and check number must be pre-printed on the check. Be sure to include customer number and/or reference invoice number. Only first party checks will be accepted. All orders paid by personal check are held up to 15 days pending clearance.

MONEY ORDERS/CASHIERS CHECKS

To use money orders or cashiers checks on pre-paid orders be sure to include customer number and/or reference invoice number. All orders paid by money order are held up to 15 days pending clearance. Once released the order will leave within 24 hours of clearance.

Make Personal Checks or Money Orders payable to:
Classic Industries®

PAYPAL

Classic Industries® now accepts payments via PayPal! Simply complete your order over the phone with a customer service representative, get your invoice number and then send your payment to paypal@classicindustries.com through PayPal's "Send Money" feature and select "Goods and Services" for payment reason. Be sure to include your invoice number in the "Special Instructions" tab at checkout for fastest service. Orders are generally shipped within 72 hours or less of payment receipt. Contact your customer service department for additional details.



MAIL ORDERS

Fill out the order form located in the back section of this catalog. For quick service use your credit card, money order, or cashiers check. Personal checks are held for 15 days from date of receipt pending clearance. All mail orders must be prepaid including freight (when applicable). COD orders through the mail will not be accepted. If you have any questions regarding product information or availability, contact our sales representatives during regular business hours at 800.854.1280.



ORDER BY PHONE

Classic Industries® employs knowledgeable sales representatives to assist you when placing your order. Our sales representatives are trained to answer your questions regarding restoration and the parts listed in this catalog. Call during regular business hours Mon-Fri 8:00-5:00, Sat 10:00-3:00, P.S.T. Closed Sundays and holidays. Our convenient Toll Free number allows you to place your order with confidence to assure you get exactly what you want when you want it! Inter-continental U.S. 800.854.1280. Outside U.S. country code + 1.714.847.6887



TOLL FREE 800-854-1280

FAX YOUR ORDER

Classic Industries® offers a convenient FAX line for customers who have access to a FAX machine. Our FAX is available 24 hours a day 7 days a week for your convenience. Fill out the order form completely and FAX your order. Within U.S. phone 800.300.3081. Outside U.S. country code + 1.714.848.9501



TOLL FREE 800-300-3081

ONLINE ORDERING

Classic Industries® offers online ordering directly through our website. Log on to classicindustries.com and order on-line. Online ordering is available 24 hours a day 7 days a week for your convenience.



WWW.CLASSICINDUSTRIES.COM

FOREIGN ORDERS

All foreign orders must be prepaid before the products can be shipped. The Classic Industries® staff will check with the various freight companies that deliver to your country and area to determine the best possible rates available for your order. Once your order is rated, you'll be contacted by e-mail or phone to approve the rate. After approval and payment is received, the order will be shipped. The Shipping & Handling fee for foreign orders will state "TBD" (To Be Determined). Rates are subject to change once the order has been packed and is ready to ship. Rates are calculated based on estimations of weight, dimensions and other factors. Should changes in freight costs occur once the order is packed and ready to ship, Classic Industries® will notify the customer immediately before the shipment is sent. If you have any questions or concerns, please direct your inquiries to info-desk@classicindustries.com

Color Matches

Due to multiple manufacturers of products Classic Industries® provides, color variations may occur. Slight color variations are common especially among interior products and do not constitute a defect. These products are not eligible for return for this reason.

Pricing

Prices in this catalog were in effect at the time of printing and supersede all prices in any previous publication. Classic Industries® makes every effort to honor the prices contained herein. However, due to increased costs of manufacturing, materials, etc., prices can change. We reserve the right to change prices without notice. For current pricing please contact a Classic Industries® sales representative during normal business hours. Eligibility of products for discounts are subject to change without notice.

Trademark and Copyright

Classic Industries® Parts and Accessories catalog is copyrighted. No part of this publication including text, photos or illustrations may be reproduced without the prior written permission of Classic Industries®. The following names and/or symbols: *Mopar, Dodge, Plymouth, Barracuda, Belvedere, Coronet, Challenger, Charger, Cobra, Dart, Duster, Fury, GTX, Hornet, Polara, Road Runner, Six Pack, Super Bee, Scamp, Valiant* are registered trademarks of Chrysler Group, LLC and are used for reference purposes only unless specified otherwise.

Product Availability

Availability of all items in this catalog are subject to change without notice. We reserve the right to discontinue products, services or accessories without notice.

Shortages

Always check the contents of your delivery to assure all the parts ordered were received. If you are missing any item(s) be sure to check for back orders noted on your invoice before calling our customer service department (see back orders). If a shortage has occurred, contact our customer service department within 2 working days of delivery to assure a prompt replacement. Classic Industries® assumes no liability after this period.

General Information

Sales Tax Information

Classic Industries® collects and remits sales tax based on state and local requirements. The sales tax laws have changed due to a Supreme Court ruling in 2018. The appropriate sales tax will be applied to your order and remitted based on your state's requirements. If your order is shipped, or picked up in a specific state that requires sales tax, the appropriate amount will be added to your order.

Accuracy Of Descriptions

Classic Industries® makes every effort to verify the accuracy of all information published in this catalog. Each item is represented with information that is accurate to the best of our knowledge at the time the catalog is printed. Classic Industries® is not responsible or liable for mistakes, print errors or inaccurate information that may lead to, or result in labor costs or damages to any vehicle under any circumstances.

Kit Products

All Classic Industries® Parts and Accessories catalogs include kits which contain a variety of products. On occasion we may run out of an item supplied with a kit. If this happens we will generally ship what is in stock and back order the item(s) which are not in stock. You may contact our sales department by phone to verify which items are not in stock at the time the order is placed. The customer may decide whether to accept the partial kit or have the entire kit back ordered until the kit is completed and all the items can be shipped at the same time. If the customer decides to accept partial delivery of the kit, then the full price of the kit will be charged to the customer and the back ordered items will be shipped no charge when they arrive at our warehouse. Customers will be charged the appropriate freight fees when applicable. Cancellation of products from a kit will be accepted at 25% below the actual current retail price of the item. On COD orders the price of the kit is charged in full and the back ordered items are shipped on a COD freight only basis.

Rights and Lefts

Some items in this catalog are presented as left or right hand products. (left side-driver) (right side-passenger). Left hand or right hand sides are determined by sitting in the vehicle, not standing in front of the vehicle.

Shipping Information

ALASKA, HAWAII, GUAM & PUERTO RICO

Orders being shipped to Alaska, Hawaii, Guam or Puerto Rico, are shipped via Ground, Overnight or 2 Day delivery whenever possible. All orders must be prepaid with credit card, money order, or check. No COD orders are accepted. Rates depend on the items being shipped. Contact our sales department for exact rates.

Important: Promotional shipping offers do not apply to Alaska, Hawaii, Guam, Puerto Rico, Canada or any foreign destination.



APO/FPO

Parcel post is the only means of shipping to an APO or FPO address. Due to size restrictions the maximum shipping box can be no larger than 72" width and girth combined. All military personnel must write or call to determine what size box will be used for the shipment. Once this is determined, Classic Industries® will call or write to let you know if the order can be shipped by Parcel Post, and the correct amount required. All orders that exceed these limitations will be shipped in accordance with customer approval.

INSURANCE

Each order is charged an insurance fee of \$3.50. This fee will insure the entire order and protect you completely from damages or loss. The order forms located in the rear of this catalog include this fee in the indicated column when your order is being totaled.

COD ORDERS

COD orders are gladly accepted on all normal ground shipments, excluding truck freight orders. COD orders will require cash only upon delivery of your order. All COD orders are shipped by FedEx®. Personal checks, business checks, money orders and certified checks are not accepted. COD orders are not accepted through the mail. COD orders must be placed by phone during regular business hours. The appropriate shipping fees will be added. COD orders are exempt from discounts and free shipping promotion. The customer will pay all appropriate fees in accordance with current policies and freight rates. A fee of \$11.95 per box will be added to all COD orders. Oversize and/or overweight boxes will be charged in accordance with the rate chart located on the order blank. Classic Industries® reserves the right to change shipping rates in accordance with rate increases by freight companies. COD orders are limited to \$999.00. If the COD order should be returned to Classic Industries® for a non-acceptance/ non-payment, the customer will be responsible to reimburse Classic Industries® for any and all freight charges related to the order. In addition, a 25% restocking fee will be applied to the returned products. All outstanding charges must be paid before any additional orders will be accepted.

SPECIAL RATE SHIPPING FEES/DROP SHIP FEES

Some items we offer may require a mandatory shipping or drop ship fee. This fee may also apply to products sold over the counter at Classic Industries® Showroom location. Contact our sales department for actual additional shipping fees.



Important: Products with special rate shipping fees or drop ship fees are excluded from promotional shipping offers.

General Information

Back Orders

The invoice located in the packing slip of your order will note any items that were out of stock at the time of shipping. The unavailable items will be back ordered unless otherwise specified on your order form or verbally to a sales representative when placing your order by phone. Back orders are usually shipped when the products arrive at our warehouse without prior notification. Classic Industries® will make an effort to contact the customer if the backorder is more than 90 days old. If you wish to cancel a back order, please notify our customer service department immediately. The customer will be responsible for a 25% restocking fee and freight charges if the back order is cancelled or returned after the items are shipped.

Damage Claims

Always check the contents of your shipment in the presence of the person delivering the merchandise. Should any damage occur, immediately notify Classic Industries® customer service dept, so that all steps necessary will be taken to ensure a prompt replacement of any damaged goods. Accurate instructions will be given on damaged goods replacement. Classic Industries® is not responsible for notification is given within 2 working days of receipt of goods (excluding Sundays and Holidays). Classic Industries® will file a claim with the carrier in most cases. If the customer files a claim with the carrier, Classic Industries® will not be responsible for replacing damaged products and the customer will be responsible to pay for any replacements until the carrier pays the claim. Any replacement parts due to sales errors or customer errors in ordering will be sent using the same shipping method as the original order when possible. Please follow these instructions to avoid any problems or misunderstandings associated with damaged products and freight claims.

Refusals

All refused COD orders will be subject to a 25% restocking fee. Classic Industries® will consider the entire order cancelled and void with no notification to the customer. The customer will be billed 25% plus all freight charges to and from the destination. Contact our customer service department for more information.

Policies

All policies in Classic Industries® current catalog supersede any and all policies in any previous catalog or publication.

EXPRESS SHIPPING

Classic Industries® offers Overnight and 2 Day air delivery service in the Continental U.S., Alaska, Hawaii, Guam and Puerto Rico. Pre-payment with a credit card is required before shipments can be sent. Simply call in your order before 2:00 p.m. Pacific Time, Monday-Friday during regular business hours and your Overnight order will arrive the following business day (pending availability). Saturday delivery is available only on Overnight service. A \$16.95 fee will be added to Overnight fees for Saturday delivery. 2 Day orders will arrive within 2 business days (pending availability). 3 Day service is available within the contiguous 48 states. Your order will usually leave within 24 hours and will arrive within 3 business days of ship date (pending availability). A \$9.95 service fee for any of these options will be added in addition to shipping fees. Contact our sales department for rates regarding air service delivery. Rates depend on the items being shipped. Some products are charged at dimensional weight as opposed to actual weight.

Important: Air service does not guarantee your order will arrive on the expected date of delivery. Under normal circumstances, air service is guaranteed. However, due to adverse weather conditions, natural disasters or unforeseen circumstances, there may be delays. Classic Industries® is not responsible for deliveries that are delayed. Air service orders are excluded from promotional shipping offers.

TRUCK FREIGHT

Products in this catalog that require truck freight are usually indicated below the product "Shipped truck freight". This indicates that the product is too large for ground delivery and must be shipped by motor freight. There may be items listed herein that are not indicated as truck freight. These items must be prepaid, including freight charges, before the shipment can be sent. Classic Industries® requires a minimum \$125.00 fee for all California orders and minimum \$175.00 fee for all out of state truck shipments. Truck freight rates could be higher depending on products being ordered and the destination. Residential deliveries require an additional \$40.00 fee. Should the customer's delivery require special handling (lift gate service, re-routing, additional freight charges, etc.), any and all additional fees will be billed to the customer's credit card. Acceptance of truck freight shipment is acknowledgment that additional charges will be incurred. Please include a commercial business address whenever possible. For additional information contact our customer service department during regular business hours.

Important: Truck freight items are excluded from promotional shipping offers.



OVERSIZE-OVERWEIGHT

These are the designations for Ground Standard packages that meet one of the following specifications for billing purposes: Oversize 1 (O1) designates a combined length and girth exceeding 84", but less than 108". Actual weight is less than 30 lbs, and is billed at 30 lbs. Oversize 2 (O2) designates a combined length and girth exceeding 108" but less than 130". Actual weight is less than 70 lbs, and is billed at 70 lbs. Oversize 3 (O3) designates a combined length and girth exceeding 130" but less than 165". A \$40.00 handling fee will be added to all (O3) orders. Actual weight is less than 90 lbs, and is billed at 90 lbs. We reserve the right to charge Oversize fees on any order containing oversize products, even if it is not indicated in the catalog.

Important: Oversize, overweight and dimensional weight items are excluded from promotional shipping offers.



Sales Errors/Ordering Errors

Classic Industries® is not responsible for customer errors or employee sales errors. Every effort is made to insure that the products you are ordering are accurate. Should an error occur, we will make every effort to resolve the issue. Replacement products will be shipped the same method as the original order whenever possible. Classic Industries® assumes no responsibility or liability for damages, fees, storage charges, or any other inconvenience that may be associated with sales errors or customer ordering errors.

Returns

Products may be returned for a full refund on the credit, or exchange within 30 days of receipt. All returns are subject to a 25% restocking fee after 30 days. Should you need to return a part for refund, exchange or credit, please contact our customer service department for a return authorization number and instructions. Classic Industries® will not accept returned goods without prior authorization. Customer will pay freight on all return orders. Allow up to 3 weeks to process refund or credit.

Important: Gift certificates have no cash value and must be redeemed for merchandise only. Literature, CDs, videos, printed materials, stencil kits, stripes, electrical parts, gauges, wiring harnesses, switches, etc. are non-returnable. All special order products must be pre-paid in full and are non-returnable. No returns on partial kits or sets. There is no restocking fee on returning parts such as engines, transmissions, rear ends, steering gears, water pumps, distributors, wiper motors, etc. If any product is modified, altered, painted, installed or disassembled in any way without Classic Industries® expressed written permission, the item is non-returnable. Classic Industries® always recommends professional installation on all products. Any item which has been altered, painted, installed or deemed non-resalable by Classic Industries® will be returned to the customer at the customer's expense. Classic Industries® is not responsible or liable for labor fees associated with the installation, removal, modification, painting or repair of any product purchased regardless of the circumstances. Classic Industries® is not responsible for any damage or discoloration incurred in relation to chemical products being used including cleaners, waxes, polishes, paints, etc.

How to FILL OUT YOUR ORDER FORM

Billing Information:

If paying by credit card, fill in the card holder's name and billing address (where the credit card statements are received).

Shipping Information:

If different than the billing address, please fill in the name and address where the order will be sent.

Page Number:

The page # of the product being ordered.

Quantity:

How many of each item you are ordering.

LH/RH:

LH (driver side) or RH (pass. side) if applicable.

Oversize/Overweight:

Enter correct amount if applicable.

Part Number:

Enter part number as it appears in this catalog.

Product Description:

The name of the product as it is listed in this catalog.

Method of Payment:

Check the appropriate box for payment. If you are paying by credit card, fill in the card number, expiration date, security code, and card holder's signature.

Vehicle Information:

Complete information about your vehicle.

Customer Number:

Usually located on the back of your catalog, above your name.

Catalog Number:

Located on the front upper right corner of the catalog cover.

E-mail Address:

Enter your E-mail address.

Date of Order:

Enter the date of your order.

Number of Pages:

Enter the number of pages you are sending.

Discount/Promotional Code:

Enter the discount or promotional code.

Unit Price:

The unit price of each item.

Total Price:

The individual price of each product multiplied by the quantity being ordered.

Subtotal:

The total amount of products ordered.

California Sales Tax:

Orders shipped within California add 8%.

Shipping Fee:

See note*

Canadian Orders:

Add 25% of your subtotal or a minimum of \$10.00 U.S. funds, whichever is higher.

Oversize/Overweight and Double Oversize:

Check the quantity of items and add the appropriate amount based on the chart.

Foreign Orders/Rush Fees:

Contact Classic Industries* for current shipping rates to your country.

APD/EPD:

Add 20% of your subtotal or a minimum of \$10.00 U.S. funds, whichever is higher.

Total:

Total of all items including tax and shipping.

Classic Industries

INDUSTRIES

Parts & Accessories

Thank You For Choosing Classic Industries®

- If you have questions, please call and a sales representative will help you with completing the order form.
- Classic Industries® will notify you if any price changes need to be made to your order form.
- Classic Industries® will notify you if any products are on back order.
- Go to www.classicindustries.com to use our convenient online order form

How to READ

Your Invoice

Invoice Number

Each order is assigned an individual invoice number.

Account Number

Your customer number.

Billing Information

Customer mailing address or where the credit card statements are received.

Vehicle Information

Shows your vehicle's year, model, etc.

Quantity Ordered

The number of each part that you've ordered.

Unit of Measure

Indicates if an item is sold individually, as a pair, kit or set.

Part Number

Part number as it's listed in the catalog.

Sale Item

"S" indicates sale item not eligible for discounts.

Product Description

Description of the part ordered.

Quantity Shipped

Number of items shipped.

Quantity Back Ordered

Number of items out of stock.

Payment Information

This shows the type of payment (cash, credit card, etc.) and the amount total.

Printed By: [Redacted]
 Prepared By: [Redacted]
 Shipped By: [Redacted]
 Fax To: [Redacted]

1234567
 000000

Starting 3rd Order in Old Inventory Parts and Accessories

Within U.S. 1-800-854-1280
 International 1-714-847-6887
 Email: sales@classindustries.com
 On-Line Ordering: www.classindustries.com

3883 Eastern Blvd. Huntington Beach, CA 92648-1278
 Page: 1 of 1

Date of Order: MODIFIED:03/02/2004
 CREDIT:03/02/2004

Subsequence Count: 0000
 00000001234567-3,95

Billing Address		Shipping Address	
Name:	PARKER, LARRY	Name:	PARKER, LARRY
Address:	18460 GOWARD ST.	Address:	18460 GOWARD ST.
City:	HUNTINGTON BEACH	City:	HUNTINGTON BEACH
State:	CA	State:	CA
Zip/Postal:	92648	Zip/Postal:	92648
Country:	UNITED STATES	Country:	UNITED STATES
Attention:		Attention:	
Phone:	(714)847-6887	Phone:	(714)847-6887

Qty	UOM	Part Number	Description	Year/Make	Unit Price	Total Price
1	EA	08846	ONE LENS KIT OONE LENS KIT		8.94	8.94
			LINE ITEM SUBTOTAL:			13.44
			20.0% VOLUME DISCOUNT:			3.49
			DISCOUNT SUBTOTAL:			13.96
			***CREDIT #00000 APPLIED TO INVOICE			3.00
			Product Temporarily Out of Stock			
			Please allow ample time for delivery of back orders			
			THANK YOU.			
			XXXXXXXXXXXX1234 06/01/2005 \$18.41			
			VISA			
			MasterCard			
			Discover			
			PayPal			
			AMERICAN EXPRESS			
			DEBIT			
			Product Protection Plan			
			Shipping and Handling		7.95	
			COO Fee		0.00	
			Multi-International Fee		0.00	
			California Sales Tax		0.00	
			Package Insurance		1.50	
			Product Protection Plan		0.00	
			Invoice Total			18.41

Date of Order

This is the date your order was originally placed.

Sales Person

The person that took your order.

Shipping Information

The address your order was shipped to.

Unit Price

The cost of each individual part.

Total Price

The total price of each part multiplied by the quantity ordered.

Sub Total Price

The total of all parts.

Discounts

The total of discounts applied.

Sub Total Price

The total of all parts and discounts applied if applicable.

Credits

The total of credits applied.

Sub Total Price:

The total of all parts, discounts and credits if applicable.

Misc. Fees:

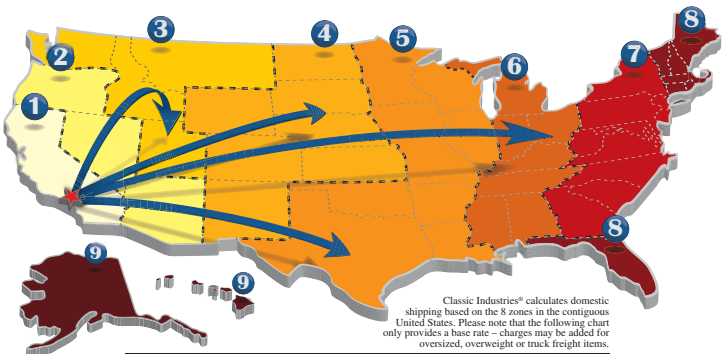
This includes shipping and handling, rush charges, insurance and sales tax if applicable.

Invoice Total:

The total of all parts shipped and fees for your complete order.

If you have any questions regarding your invoice please contact us at 800-854-1280 during regular business hours and a customer service representative will gladly assist you.

Shipping Information



Classic Industries® calculates domestic shipping based on the 8 zones in the contiguous United States. Please note that the following chart only provides a base rate – charges may be added for oversized, overweight or truck freight items.

Zones	1	2	3	4	5	6	7	8	9
Estimated Delivery	2-4 Days			3-6 Days		4-8 Days		7-10 Days	

ALASKA, HAWAII, GUAM & PUERTO RICO

Orders being shipped to Alaska, Hawaii, Guam or Puerto Rico, are shipped via Ground, Overnight or 2 Day delivery whenever possible. All orders must be prepaid with credit card, money order, or check. No COD orders are accepted. Rates depend on the items being shipped. Contact our sales department for exact rates.

Important: Promotional shipping offers do not apply to Alaska, Hawaii, Guam, Puerto Rico, Canada or any foreign destination.

APO/FPO

Parcel post is the only means of shipping to an APO or FPO address. Due to size restrictions the maximum shipping box can be no larger than 72" width and girth combined. All military personnel must write or call to determine what size box will be used for the shipment. Once this is determined, Classic Industries® will call or write to let you know if the order that exceeds these limitations will be shipped in accordance with customer approval.

HANDLING

Each order is charged a handling fee of up to \$3.50. This fee will insure the entire order and protect you completely from damages or loss. The order forms located in the rear of this catalog include this fee in the indicated column when your order is being totaled.

COD ORDERS

COD orders are gladly accepted on all normal ground shipments, excluding truck freight orders. COD orders will require cash only upon delivery of your order. All COD orders are shipped by FedEx. Personal checks, business checks, money orders and certified checks are not accepted. COD orders are not accepted through the mail. COD orders must be placed by phone during regular business hours. The appropriate shipping fees will be added. COD orders are exempt from discounts and free shipping promotion. The customer will pay all appropriate fees in accordance with current policies and freight rates. A fee of \$11.95 per box will be added to all COD orders. Oversize and/or overweight boxes will be charged in accordance with the rate chart located on the order blank. Classic Industries® reserves the right to change shipping rates in accordance with rate increases by freight companies. COD orders are limited to \$999.00. If the COD order should be returned to Classic Industries® for non acceptance/non payment, the customer will be responsible to reimburse Classic Industries® for any and all freight charges related to the order. In addition, a 25% restocking fee will be applied to the returned goods. All outstanding charges must be paid before any additional orders will be accepted.

SPECIAL RATE SHIPPING FEES/DROP SHIP FEES

Some items we offer may require a mandatory shipping or drop ship fee. This fee may also apply to products sold over the counter at Classic Industries® Showroom location. Contact our sales department for actual additional shipping fees.

Important: Products with special rate shipping fees or drop ship fees are excluded from promotional shipping offers.

ZONE 9
ALASKA & HAWAII

Orders to Alaska and Hawaii ship by air and therefore ground rates do not apply.

EXPRESS SHIPPING

Classic Industries® offers Overnight and 2 Day air delivery service in the Continental U.S., Alaska, Hawaii, Guam and Puerto Rico. Pre-payment with a credit card is required before shipments can be sent. Simply call your order before 2:00 p.m. Pacific Time, Monday-Friday during regular business hours and your Overnight order will arrive the following business day (pending availability). Saturday delivery is available only on Overnight service. A \$16.95 fee will be added to Overnight fees for Saturday delivery. 2 Day orders will arrive within 2 business days (pending availability). 3 Day service is available within the contiguous 48 states. Your order will usually leave within 24 hours and will arrive within 3 business days of ship date (pending availability). A \$99.95 service fee for any of these options will be added in addition to shipping fees. Contact our sales department for rates regarding air service delivery. Rates depend on the items being shipped. Some products are charged at dimensional weight as opposed to actual weight.

Important: Air service does not guarantee your order will arrive on the expected date of delivery. Under normal circumstances, air service is guaranteed. However, due to adverse weather conditions, natural disasters or unforeseen circumstances, there may be delays. Classic Industries® is not responsible for deliveries that are delayed. Air service orders are excluded from promotional shipping offers.

TRUCK FREIGHT

Products in this catalog that indicate truck freight are usually indicated below the product "Shipped truck freight". This indicates that the product is too large for ground delivery and must be shipped by motor freight. There may be items listed herein that are not indicated as truck freight. These items must be prepaid, including freight charges, before the shipment can be sent. Classic Industries® requires a minimum \$125.00 fee for all California orders and minimum \$175.00 fee for all out of state truck shipments. Truck freight rates could be higher depending on products being ordered and the destination. Residential deliveries require an additional \$40.00 fee. Should the customer's delivery require special handling (lift gate service, re-routing, additional freight charges, etc.), any and all additional fees will be billed to the customer's credit card. Acceptance of truck freight shipment is acknowledgment that additional charges will be incurred. Please include a commercial business address whenever possible. For additional information contact our customer service department during regular business hours.

Important: Truck freight items are excluded from promotional shipping offers.

OVERSIZE-OVERWEIGHT

These are the designations for Ground or Standard packages that meet one of the following specifications for billing purposes: Oversize 1 (OS1) designates a combined length and girth exceeding 84", but less than 108". Actual weight is less than 30 lbs, and is billed at 30 lbs. Oversize 2 (OS2) designates a combined length and girth exceeding 108" but less than 130". Actual weight is less than 70 lbs, and is billed at 70 lbs. Oversize 3 (OS3) designates a combined length and girth exceeding 130" but less than 165". A \$40.00 handling fee will be added to all (OS3) orders. Actual weight is less than 90 lbs, and is billed at 90 lbs. We reserve the right to charge Oversize fees on any order containing oversize products, even if it is not indicated in the catalog.

Important: Oversize, overweight and dimensional weight items are excluded from promotional shipping offers.



Product Index

A

A-Arm 297, 301

A-Arm Bushing 297, 303

A-Arm Shaft Bolt 302

AC Air Distributor Duct Vent 399

AC Belt 388

AC Blower Motor Resistor 397

AC Box Cover Hardware 402

AC Clutch Switch 401

AC Compressor 401

AC Compressor Bracket 402

AC Compressor Manifold 401

AC Compressor Mounting Hardware 402

AC Condenser 403

AC Condenser Check Valve Clip 402

AC Condenser Mounting Bracket 402

AC Decal 190, 193-194

AC Delete Cover 396

AC Evaporator Core 403

AC Evaporator Core Orifice Tube 403

AC Evaporator Core Outlet Case 403

AC Expansion Valve 403

AC Hose Clamp 402

AC Hose Grommet 402

AC Liquid Bled Valve Core 403

AC Manifold 402

AC Mounting Hardware 402

AC Muffler 403

AC Outlet Assembly 399

AC POA Update Set 403

AC POA Valve Fitting 403

AC Receiver Bracket 402

AC Receiver/Dryer 403

AC Tube Foam Seal 402

AC Vacuum Canister 398

AC Wire Harness 574

Accelerator Cable Retainer 123

Accelerator Lever Cable 507

Accelerator Pedal 122, 127

Accelerator Pedal Bolt Stud 122

Accelerator Pedal Mounting Pin 122

Accelerator Pedal Pad 122

Accelerator Pedal Rod 122, 507

Accelerator Pedal Rod Support 122

Accelerator Pedal Spring 122

Accelerator Pump Cam Set 506

Accelerator Pump Squirters 503

Accelerator Return Spring 506

Accelerator Rod Grommet / Sleeve 122

Accelerator Spring Bracket 506

Accelerator Throttle Arm 123

Accelerator Throttle Lever 123

Accelerator Throttle Rod 123, 507

Accessory Connector Pack 578

Accessory Drive System 417

Accessory Wire 580

Accessory, Automotive 129-147

Actuator Rod, Shift 546

Actuator, Ignition Switch 94

Actuator, Neutral Safety Switch 94

Adapter, Air Cleaner 431

Adapter, Alternator Conversion 484

Adapter, Battery Post 567

Adapter, Bucket Seat Mounting 27

Adapter, Carburetor 504-505

Adapter, EFI Fuel Return 510

Adapter, Key Start Wiring 421

Adapter, Motor Mount 421

Adapter, Oil Filter 459

Adapter, Shift Knob 562

Adapter, Steering Column Wire Harness 113

Adapter, Steering Wheel 112

Adapter, Drag Link 297

Adapter, Steering Column 313

Adhesive, Emblem 183

Adhesive, Rear View Mirror 51

Adhesive, Spray 12

Adhesive, Trim 57

Adhesive, Weatherstrip 207

Adjustable Electric Fan Thermostat 385

Adjustable Foot Rest 127

Adjuster Knob, Seat 32

Adjuster, Drum Brake 351

Adjuster, Headlamp 221

Adjuster, Worm Bearing 295

Advance Lockout, Tie Rod 297-298

Advance Lockout, Vacuum 478

Advance Tube, Vacuum 478

Advance, Distributor 478

Aerosol Coating 176, 178

Air Cleaner 425, 430-435, 437-439, 441

Air Cleaner Adaptor 431

Air Cleaner Base 430, 510

Air Cleaner Base Gasket 436

Air Cleaner Decals 186

Air Cleaner Emblem 430

Air Cleaner Hose 436

Air Cleaner Lid Seal 436

Air Cleaner PreCharger 435

Air Cleaner Sleeve, Tie Rod 436

Air Cleaner Spacer 436

Air Cleaner Wing Nut 436

Air Compressor, Suspension 317

Air Conditioning Hose Crimper Tool 403

Air Conditioning Line Clamp 387

Air Dam, Front 186

Air Deflector Duct 398

Air Filter 430, 434-435, 437

Air Filter Cleaner/Degreaser 434, 437

Air Filter Sealing Grease 435

Air Filter Service Instructions Decal 189

Air Flow Control Cable 398

Air Flow Sensor, Mass 437

AIR Injection / Smog Extension Tube 518

AIR Injection / Smog Hose 518

AIR Injection Diverter Valve Tee 518

Air Intake Heat Shield 437

Air Out Deflector 399

Air Ride Suspension 317

Air Shift Lockout 196

Alignment Lock Out Set 302

Alternator 482-483

Alternator Adapter Plug 421

Alternator Belt 388, 483

Alternator Bolt 484

Alternator Boot 484

Alternator Spacer 485

Alternator Case 484

Alternator Charge Wire 579

Alternator Fan/Pulley 484

Alternator Mounting Set 421

Alternator Pigtail 484

Alternator Shut-Down Relay Set 579

Alternator Spacer 485

Alternator Terminal Cap 484

Alternator Terminal Cap Retainer 484

AM/FM Radio Aux-In Adapter 86

AM/FM Stereo Instructions 198

Amplifier 86-87

Amplifier, Transistor Ignition 479

AN Hex Wrench 93

Anchor Bolt, Seat Belt 35

Anchor Plate, Leaf Spring 324

Anchor Plate, Spare Tire 275

Anchor Plate, Sway Bar 304

Antenna 90

Antenna Bezel Nut 91

Antenna Bracket 91

Antenna Cable 91

Antenna Gasket 91

Antenna Ground Plate 91

Antenna Ground Strap 91

Antenna Location Template 91

Antenna Mast 90

Antenna Nut 91

Anti-Freeze Tag 190

Anti-Roll Bar 304

Anti-Theft System 160

Apparel 129-137

Applicator, Decal 199

Apron, Fender 247

Arm, Back-Up Lamp 550

Arm, Door Hinge 258

Arm, Shifter 561

Arm, Steering 299

Armrest Base 44-45

Armrest, Molding 44-45

Armrest Pad 44-45

Ashtary 147

Assembly Manual 199

Astro Ventilation Window Decal 193

Audio 82-91

Auto Dolly 170

Auto Off Headlamp Relay 92

Auto Shift Lens Backing Plate 120

Auto Trans Control Cable Bracket 542

Auto Transmission Shift Linkage 546

Automatic Gearshift Knob 563

Automatic Transmission 532-533

Automatic Transmission Drain Plug Kit 536

Automatic Transmission Filter 538

Automatic Transmission Pan Bolt 539

Automotive DVDs 155

Automotive Literature 148-159

Auxiliary Lamp Relay Set 220, 579

Axle & Differential Manual 155

Axle Bumper, Rear 328

Axle Housing Fill Plug 328

Axle Shaft Lock 328

Axle Tube Perch 324

Axle, Rear 326, 328

B

Back Glass Molding Tool 217

Back Glass Weatherstrip 201

Back Panel, Seat 33

Back Window Glass 308

Back-Up Lamp Arm 550

Back-Up Lamp Lens 228-229

Back-Up Lamp Pigtail 230

Back-Up Lamp Switch 550

Back-Up Lamp Wire Harness 573

Back-Up Lens/Tail Lamp Gasket 205, 229

Back-Up Switch Mounting Set 550

Backing Plate, Auto Shift Lens 120

Backing Plate, Brake 350

Backfill, Oil Pan 458-459

Balancer, Crankshaft 421

Ball Joint 297

Ball Joint Boot 128

Ball Stud, Accelerator Pedal 292

Bar, Traction 32

Base Molding, Armrest 45

Base, Air Cleaner 510

Base, Armrest 44-45

Base, Console Gauge 118

Battery 564

Battery Cable 566-567

Battery Cable Clip, Oil Pan 459, 567

Battery Cable Insulator 567

Battery Cable Retainer 567

Battery Cable Terminal 567

Battery Cable Terminal Protector 567

Battery Charger 568

Battery Clamp Retainer Bolt 565

Battery Cut-Off Switch 569

Battery Decal 190

Battery Disconnect Switch 578

Battery Mat 568

Battery Owners Certificate 195

Battery Post Adapter 567

Battery Post Felt Washer 567

Battery Relocation Kit 565

Battery Side Terminal Adapter 567

Battery Terminal Protector 567

Battery Tool 567-569

Battery Topper/Top Cover 568

Battery Tray 564-565

Battery Tray Bolts 284, 565

Battery Tray Clamp 565

Bearing Pack 326

Bearing Race and Seal Driver 300

O INDEX, POLICIES & ORDER FORMS

Product Index

Bearing Ring, Drive Gear	551	Bolt Set, Transmission Pan	539	Bracket, Idler Arm Frame	298
Bearing Set, Rear Axle	229	Bolt Set, Valve Cover	443, 446	Bracket, Ignition Coil	479
Bearing, Idler Arm	298	Bolt Set, Water Outlet	394-395	Bracket, Kickdown	509, 542
Bearing, Lower Steering Shaft	112	Bolt Set, Water Pump	392	Bracket, License Plate	239, 488
Bearing, Pilot	551	Bolt, A-Arm Shaft	302	Bracket, Manual Choke Cable Mount	507
Bearing, Rear Axle	328, 299	Bolt, Alternator	484	Bracket, Morse Cable	501
Bearing, Steering Column Bowl Lever	112	Bolt, Battery Clamp Retainer	426	Bracket, Oil Pressure Wiring	456
Bearing, Wheel	300	Bolt, Battery Tray	565	Bracket, Outer Mirror	267
Bellcrank Mount, Clutch	559	Bolt, Brake Caliper	349	Bracket, Park Brake Cable	346-347
Bellcrank Pivot Ball	559	Bolt, Brake Caliper Hose	349	Bracket, Power Brake Booster Hose	343
Bellcrank Pivot Ball Bracket	559	Bolt, Brake Line	345	Bracket, Power Steering Hose	293
Bellcrank Seal	559	Bolt, Distributor	475	Bracket, Power Steering Pump	291
Bellcrank Clutch	559	Bolt, Harmonic Balancer	426	Bracket, Radiator Fan Shroud	379
Bellhousing Bolt Set	551	Bolt, Ignition Coil	479	Bracket, Radio Support	85
Bellhousing Dowel Pin	551	Bolt, Leaf Spring	325	Bracket, Rear View Mirror	51
Bellhousing Dust Shield	551	Bolt, Main Cap	456	Bracket, Remote Mirror	266
Bellhousing for Fork Boot	557	Bolt, Seat Belt Anchor	35	Bracket, Return Spring Extension	557
Bellhousing, Transmission	552	Bolt, Shock	321	Bracket, Seal	29, 31
Belt Buckle	140	Bolt, Shock Tower	321	Bracket, Shift Cable	542
Belt Conversion, Serpentine	424	Bolt, Steering Gear Mounting	295	Bracket, Smog Pump	518
Belt, AC	388, 401	Bolt, Sway Bar	304	Bracket, Speed Warning Cable	78
Belt, Alternator	388, 483	Bolt, Turn Signal Hold Down	114	Bracket, Sun Visor	58
Belt, Power Steering	292, 388	Bolt, U-Joint	326	Bracket, Sway Bar	305
Belt, Smog Pump	518	Bolts and Fasteners	225, 284-289	Bracket, Throttle Cable	508-509, 542
Bezel Extension Molding, Park Lamp	218	Bolts, Stud Mount	481	Bracket, Tire Inflator	275
Bezel Lens, Dash	63	Bolts, Tie Rod Sleeve	298	Bracket, Transmission Cable	505
Bezel Nut Tool, Ignition Switch	94	Books	148-159	Bracket, Transmission Shifter	546
Bezel Nut, Ignition Switch	94	Boost Gauge	72	Bracket, Windshield Washer Jar	279
Bezel, Console Gauge	118	Boot and Ring, Floor Shifter	544	Brackets, Grill	235
Bezel, Dash	62, 96	Boot Retainer, Shift	121	Brake / Clutch Pedal Assembly	126
Bezel, Defogger Switch	92	Boot, Alternator	484	Brake Adjusting Hole Cover	351
Bezel, Fiber Optic Lamp Housing	724	Boot, Ball Joint	298	Brake Adjustment Tool	352
Bezel, Headlamp	221-222	Boot, Bellhousing to Fork	557	Brake Backing Plate	348
Bezel, Headlamp Dimmer Switch	93	Boot, Clutch Fork	557	Brake Backing Plate Gasket	348
Bezel, Ignition Switch	94	Boot, Clutch Push Rod	558	Brake Bleeder Screw Dust Cap	352
Bezel, Park Lamp	224	Boot, Convertible Top	255	Brake Bleeder Tool	352
Bezel, Radio	824	Boot, Park Lamp Socket	225	Brake Bleeder Valve	352
Bezel, Remote Mounting Door Panel	267	Brake, Crosser Power	338, 349	Brake Caliper	349
Bezel, Side Marker	227	Boot, Shift	120-121	Brake Cable Clip	345
Bezel, Wheel Insert	362	Boots, Tie Rod End	298	Brake Cable Guide	347
Blade, Windshield Wiper	278	Bottle, Radiator Overflow	377	Brake Cable Mounting Bracket, Park	347
Bleeder Set, Hydraulic System	256	Box, Tool	140	Brake Cable Pliers	353
Blower Motor	397	Brace, AC Compressor Mounting	402	Brake Cable Retainer, Park	347
Blower Motor Fan	397	Brace, Firewall	248	Brace Caliper	349
Blower Motor Mounting Screw Set	397	Brace, Firewall to Floor	252	Brace Caliper Hose Bolt	349
Blower Motor Resistor	397-398	Brace, Floor	252-253	Brace Caliper Mounting Bracket	349
Blower Relay	398	Brace, Frame Rail	271	Brace Caliper Mounting Hardware	349
Blower Switch, Heater	398	Brace, Rear Frame Rail Floor	252	Brace Caliper O-Ring	350
Bluetooth Interface	86	Brace, Rear Under-Seal Floor	253	Brace Caliper Paint	353
Body Alignment Shim	236, 249	Brace, Roof Panel	254	Brace Caliper Piston	350
Body Bolt Set	249	Brace, Stair	481	Brace Caliper Rebuild Kit	349
Body Manual, Fisher	148-149	Brace, Trunk Floor	276	Brace Clips	345
Body Markers and Paint	162	Brace, Trunk Gutter	276	Brace Combination Valve	338
Body Mount Bushing	307	Bracket, AC Compressor	401-402	Brace Combination Valve Bracket	341
Body Mount Hardware	307	Bracket, AC Condenser Mounting	402	Brace Conversion Combo Valve Set	338
Body Shims	284	Bracket, AC Receiver	402	Brace Conversion, Disc	315, 331-336
Body Side Molding	212-213	Bracket, AC Relocation	402	Brace Cylinder Hose	402
Body Side Molding Clip	213	Bracket, Accelerator Spring	406	Brace Distribution Block	343
Body Side Molding Retainer Screw	213	Bracket, Alternator	585	Brace Drums	350
Body Tool	282	Bracket, Auto Trans Control Cable	542	Brace Fluid	353
Bodywork Manual	157-158	Bracket, Bellcrank Pivot Ball	559	Brace Fluid	353
Bolt Set, Bellhousing	551	Bracket, Brake Combination Valve	341	Brace Fluid Reservoir	343
Bolt Set, Bumper	239	Bracket, Brake Hose	345	Brace Hardware	351
Bolt Set, Chassis	347	Bracket, Brake Line	345	Brace Hold-Off Valve	343
Bolt Set, Cylinder Head	447	Bracket, Bucket Seat	253	Brace Hose	345
Bolt Set, Differential Cover	329	Bracket, Bucket Seat Headrest	32	Brace Lamp Relay Set	379
Bolt Set, Door Hinge	259	Bracket, Bumper	238	Brace Lamp Switch	93
Bolt Set, Engine	447-448	Bracket, Carburetor Mount Linkage	506	Brace Lamp Switch Retaining Clip	93
Bolt Set, Exhaust Manifold	517	Bracket, Carburetor Return Spring	506	Brace Lamp, LED	544
Bolt Set, Fan Clutch to Water Pump	381	Bracket, Clutch Conversion	559	Brake Line	313, 335, 344
Bolt Set, Fan Spacer	381	Bracket, Console Mount	121	Brake Line Bolt	345
Bolt Set, Flexplate to Crankshaft	535	Bracket, Console To Floor Mounting	121	Brake Line Bracket	345
Bolt Set, Flywheel to Crankshaft	553	Bracket, Courtesy Lamp	59	Brake Line Fitting	335
Bolt Set, Fuel Pump	492	Bracket, Electric Fan	384	Brake Manual	155
Bolt Set, Header	514	Bracket, Engine Frame	411	Brake Master Cylinder	332, 338-339
Bolt Set, Hood Hinge	245	Bracket, Engine Pulley	415	Brake Master Cylinder Clevis Pin	230
Bolt Set, Intake Manifold	448	Bracket, Fuel Filter	492	Brake Master Cylinder Cover	339, 342
Bolt Set, License Plate	145, 239	Bracket, Gas Line Support	496	Brake Master Cylinder Rebuild Kit	342
Bolt Set, Motor Mount	411	Bracket, Grill	235	Brake Pad Retainer Spring	348
Bolt Set, Oil Pan	458, 460	Bracket, Grill Mounting	235	Brake Pad Spreader Tool	352-353
Bolt Set, Thermostat Housing	395	Bracket, Header-Adapter Alternator	485	Brake Pad Trim Plate	125
Bolt Set, Timing Cover	429	Bracket, Heater Hose	387	Brake Pads	335, 349
		Bracket, Hood Lower	244		

Product Index

- Brake Pedal Assembly126
- Brake Pedal Bushing126
- Brake Pedal Pad125, 254
- Brake Pedal, Park126
- Brake Pipe Clip345
- Brake Release, Park347
- Brake Rod Grommet, Park346
- Brake Rotors348
- Brake Shoe Guide Plate351
- Brake Shoe Retaining Pin351
- Brake Shoes350
- Brake Spindle299
- Brake Spring351
- Brake Spring Pliers352
- Brake Spring Tool352
- Brake Tube Bending Tool353
- Brake Tube, Power343
- Brake Warning Switch Socket & Wiring343
- Brake Wheel Cylinder, Drum351
- Brake/Clutch Pedal Pin126
- Brakes & Parts Cleaner353
- Braze Tie Wiring Retainer481
- Breather Cap, Oil445
- Breather, Valve Cover439
- Brochure, Sales150
- Brodie Knob, Steering Wheel144
- Brushes, Starter481
- Bucket Seat Bracket253
- Bucket Seat Conversion Bracket29, 31
- Bucket Seat Frame Support252
- Bucket Seat Headrest Bracket32
- Bucket Seat Headrest Lock32
- Bucket Seat Molding32
- Bucket Seat Mounting Adapter27
- Bucket Seat Support253
- Bucket Seats26-29
- Bucket, Headlamp Mounting722
- Buckle Cover, Seat Belt35
- Buckle, Belt140
- Bulb Covers, Light81
- Bulb, Console Gauge119
- Bulb, Dome Lamp59
- Bulb, Gauge Lamp81
- Bulb, Headlamp218, 220
- Bulb, Instrument Panel Lamp63
- Bulb, Trunk Lamp273
- Bulbs, Lamp232-233
- Bulbs, Replacement Lamp232
- Bullet Outer Door Mirror267
- Bumper237
- Bumper Bolt239
- Bumper Bracket238
- Bumper Filler237
- Bumper Filler Panel237
- Bumper Guard238
- Bumper Guard Cushion238
- Bumper Jack275
- Bumper Sticker142
- Bumper to Body Seal204
- Bumper, Control Arm203
- Bumper, Door360
- Bumper, Fuel Door207, 239, 488
- Bumper, Glove Box Door206
- Bumper, Hood206, 245
- Bumper, Rear Axle328
- Bumper, Rear Seat Filler Panel33, 207
- Bumper, Seat Back33, 207
- Bumper, Truncation Bar322
- Bumper, Trunk Lid206, 272
- Bumper, Upper Control Arm302
- Bumper, Window263
- Bushing / Tip Kit, Sun Visor58
- Bushing & Hardware, Radiator Support236, 379
- Bushing, Grease306
- Bushing Installation/Removal Tool303
- Bushing Set, Polyurethane298, 303, 307, 325
- Bushing, Body Mount307
- Bushing, Brake Pedal126
- Bushing, Carburetor & Throttle Arm Linkage509
- Bushing, Clutch Pedal126
- Bushing, Clutch Pivot58
- Bushing, Control Arm297, 302-303
- Bushing, Convertible Top256

- Bushing, Door Hinge259
- Bushing, Idler Arm297
- Bushing, Ignition Vibration465
- Bushing, Leaf Spring325
- Bushing, Mirror Mount51
- Bushing, Pilot51
- Bushing, Shifter546
- Bushing, Sway Bar305
- Button, Seat Back Lock32
- Button, Shift547

C

- C-Clip Eliminator Kit, Axle328
- Cable Bracket, Transmission Control542
- Cable Clip, Kick Panel Vent43
- Cable Equalizer, Parking Brake347
- Cable Insulator, Battery567
- Cable Mounting Bracket, Park Brake347
- Cable Retainer, Park Brake346
- Cable, Accelerator Lever507
- Cable, Antenna91
- Cable, Battery566
- Cable, Piston, Brake256
- Cable, Heater Control398
- Cable, Kick Panel Vent43
- Cable, Park Brake346
- Cable, Parking Brake346
- Cable, Speed Warning Control78
- Cable, Speedometer119
- Cable, Throttle**508
- Cable, Trans Throttle Valve Control542
- Cable, Transmission Shifter542
- Caliper O-Ring, Brake350
- Caliper Paint, Brake353
- Caliper Piston, Brake350
- Caliper Rebuild Kit, Brake349
- Caliper Repair Set349
- Caliper, Brake349
- Cam Bearing Installation Tool415
- Cam Bolt Set302
- Cam Set, Accelerator Pump506
- Cam Spacer, Window Regulator263
- Cam, Turn Signal Cancelling114-115
- Camshaft452-453
- Camshaft Gear Drive429
- Camshaft Installation Tool414
- Camshaft, Accelerator Pump506
- Camshaft Roller Lifters453
- Canvas Bag, Bow Tie Logo138
- Cap / Hat129-131, 134-136
- Cap / Rotor, Distributor466, 477
- Cap Mounting Kit, Horn110
- Cap, Wheel354-357, 359-364, 367, 369-370
- Cap, Distributor464, 466, 469, 477
- Cap, Front Wheel Bearing Grease300
- Cap, Fuel489
- Cap, Horn107
- Cap, Hub356
- Cap, Oil445
- Cap, Oil Breather356
- Cap, Power Steering Pump291
- Cap, Radiator378
- Cap, Shock Absorber321
- Cap, Vacuum504
- Cap, Valve Stem356
- Car Wheel354-357, 359-364, 367, 369-370
- Car Windshield Washer Jar279
- Cap, Windshield Wiper Arm278
- Car Care Products**163-169
- Car Cover4-5
- Car Cover Gust Guard5
- Car Window Sticker198
- Carburetor**497-501
- Carburetor & Throttle Arm Linkage Bushing509
- Carburetor Accelerator Pump Squirters503
- Carburetor Adapter504
- Carburetor Adjustment Set503
- Carburetor Air Cleaner Stud506
- Carburetor Ball Stud Set506
- Carburetor Cable Brackets509
- Carburetor Calibration Set503
- Carburetor Choke Set507

- Carburetor Cover435, 505
- Carburetor Float Bowl Screw506
- Carburetor Fuel Line504
- Carburetor Gasket502
- Carburetor Jet Shield504-505
- Carburetor Jet503
- Carburetor Linkage Plate505
- Carburetor Main Body499
- Carburetor Manuals154
- Carburetor Mount Linkage Bracket506
- Carburetor Needle and Seat505
- Carburetor Power Valve503
- Carburetor Rebuild Kit502-503
- Carburetor Return Spring506
- Carburetor Return Spring Bracket506
- Carburetor Rod Clip**505
- Carburetor Secondary Spring Housing506
- Carburetor Spacer505
- Carburetor Stud Kit**506
- Carburetor Throttle Stud**509
- Carburetor to Manifold Adapter**505
- Carburetor Wedge Plate505
- Card, Rally Wheel Instruction193
- Card, Seat Belt Instruction191
- Card, Spare Wheel Lock Instruction193
- Cargo Area Carpet, Wagon8
- Cargo Cover, Wagon8
- Carpet6-8
- Carpet Dye176
- Carpet, Firewall9
- Carpet Insulation9
- Carpet Sound Deadener10
- Carpet, Molded6
- Carpet, Trunk8
- Carpet, Wagon Cargo Area403
- Case, AC Evaporator484
- Case, Alternator484
- Case, Heater397
- Cast Iron Manifold Dressing516
- Catalytic Converter Decal192
- Catch Tank, Oil464
- Catch, Trunk Lid273
- Center AC Outlet399
- Center Cap, Wheel 354-357, 359-364, 367, 369-370
- Center Console117
- Center Drag Link297
- Center Outlet, AC Control399
- Certificate, Warranty195, 198
- Channel Liner, Window207
- Charcoal Canister, Fuel Vapor495
- Chassis & Suspension Manual157, 159
- Chassis Bolt Set347
- Chassis Wiring Harness576-577
- Check Valve, Power Steering Booster340
- Chip, Hypertech Power413
- Chocks, Wheel172
- Choke Cable, Manual507
- Choke Rod507
- Choke Set, Carburetor507
- Choke Thermostat507
- Choke Thermostat Mounting Screw507
- Chrome Shift Knob563
- Cigarette Lighter96
- Cigarette Lighter Housing96
- Cigarette Lighter Retainer96
- Circuit Add-On Isolators578
- Circuit Board, Printed63
- Clamp, AC Hose387, 402
- Clamp, Battery Tray565
- Clamp, Car Cover5
- Clamp, Distributor Hold Down475
- Clamp, Evaporator Core Outlet Tube402
- Clamp, Exhaust516, 520
- Clamp, Heater Hose387
- Clamp, Leaf Spring Rebuild Kit325
- Clamp, Metal Line345
- Clamp, PCV Valve Hose444
- Clamp, Power Steering Hose283
- Clamp, Snog Pump Hose Tower518
- Clamp, Steering Column111
- Clamp, Wire Harness581
- Clean Park Mat170

Product Index

Cleaner, Brakes & Parts	353	Clutch Top	558	Convertible Top Motor	256
Cleaner, Upholstery	166	Clutch/Flywheel Housing Cover	553	Convertible Top Motor Grommet	256
Cleaner, Wheel & Tire	167	Coat Hanger Hook	58	Convertible Top Pad	255
Clevis Pin, Brake Master Cylinder	126	Coil Cover, Ignition	418, 479	Convertible Well Liner	255
Clip, AC Condenser Check Valve	402	Coil Over Shock	310	Coolant	377
Clip, Body Side Molding	213	Coil Over System	319	Coolant Additive	377
Clip, Brake Cable	345	Coil Pack Shield	417	Coolant Filter	376
Clip, Brake Lamp Switch Retaining	93	Coil Spring Decal	196	Coolant Hose Adapter	80
Clip, Carburetor Rod	505	Coil Spring Insulator	322	Coolant System Protector	377
Clip, Clutch Push Rod Retainer	558	Coil Spring Perch	322	Cooling Fan Blade, Radiator	380-383
Clip, Console Gauge Mounting	119	Coil Spring Seat	322	Cooling Fan Control	385
Clip, Console Seat Belt	85	Coil Spring Spacer, Front	322	Cooling System Component Set	377
Clip, Convertible Top Binding End	255	Coil Spring, Door Panel	49	Cooling System Decal	188
Clip, Convertible Top Hose	256	Coil Springs	322	Cooling System Thermostat	395
Clip, Convertible Top Molding	255	Coil Wires	465	Cooling System Zinc Anode	384
Clip, Door Handle	49	Coil-Over Shock Absorber	313, 321	Core, AC Evaporator	403
Clip, Door Inside Locking Rod	260	Coil, Ignition	464, 466-469, 478	Countershaft Gear Bearing Washer	551
Clip, Door Jam Windlace	46	Coil, Thermostatic Choke	507	Coupler, Steering	111, 295-296
Clip, Door Latch Rod	259	Color Bar, Radio	85	Courtesy Lamp	59
Clip, Door Latch Rod Center	259	Column Shift Knob	113	Courtesy Lamp Bracket	59
Clip, Door Ledge Molding	213	Column Shift Linkage Set	544-545	Courtesy Lamp Set	95
Clip, Door Lock Rod Retaining	260	Column, Steering	111-112	Courtesy Lamp Wire Harness	574
Clip, Fuel Line	496	Combination Valve	338, 341	Cove Molding	216
Clip, Glove Box	95	Comfort-Grip Steering Wheel	39	Cover, AC Delete	396
Clip, Headliner Bow	57	Complete Door Pan Halves	251	Cover, Brake Adjusting Hole	351
Clip, Heater Control Lens	399	Compression Tester	413	Cover, Brake Master Cylinder	342
Clip, Heater Core Mounting	396	Compressor Ground Wire, AC	401	Cover, Car	435
Clip, Heater Hose	387	Compressor Tool, Valve Spring	414	Cover, Carburetor	4-5
Clip, Kickdown Rod	542	Compressor, AC	401	Cover, Cargo	8
Clip, Lower Fan Shroud	379	Condenser Check Valve Clip, AC	402	Cover, Clutch Housing	553
Clip, Oil Line	119	Condenser, AC	403	Cover, Differential	329
Clip, Oil Pan Battery Cable	459, 567	Condenser, Distributor	466, 476	Cover, Engine	416
Clip, Park Brake Cable Retainer	346	Conduit, Wiring	479	Cover, Flywheel Housing	553
Clip, Park Brake Lamp Switch	363	Connector, Park Brake Cable	347	Cover, Harmonic Balancer	426
Clip, PCV Valve	444	Connector, Subframe	322, 314	Cover, Ignition Coil	418
Clip, Power Window Switch	293	Console	116	Cover, Kick Panel Vacuum Actuator	43
Clip, Rear Window Molding	211	Console Emblem	121	Cover, Lock Plate	113
Clip, Reveal Molding	211	Console Gauge Bezel	118	Cover, Master Cylinder	342
Clip, Rocker Panel Molding	215	Console Gauge Bulb	119	Cover, Oil Filter	462
Clip, Shift Knob	546	Console Gauge Hardware	119	Cover, Oil Pump	456
Clip, Speedometer Cable	78	Console Gauge Lens	118	Cover, Oil Tank	428
Clip, Tailgate Remote Control	273	Console Gauge Mounting Plate	118	Cover, Pedal	124
Clip, Throttle Rod Retainer	123	Console Gauge Oil Pressure Line	119	Cover, Rear End	329
Clip, Windshield Molding	211	Console Gauge Pod	118	Cover, Rear Radio Speaker	87
Clip, Wire Harness Retainer	581	Console Gauges	118-119	Cover, Seat Belt Buckle	35
Clips, Brake	345	Console Mounting Bracket	121	Cover, Seat Belt Retractor	35
Clips, Fuel	345	Console Plate	116	Cover, Seat Headrest	31
Clips, Windshield Molding	211	Console Seat Belt Clip	35	Cover, Shifter	545
Clock	65, 80	Console Shift Plate	120	Cover, Spare Tire	274
Clock Plate	65	Console Shift Plate Screw	120	Cover, Steering Column	111-112
Clock Wiring Harness	574	Console Shifter Swivel	546	Cover, Steering Wheel	99
Clock, Wall	141	Console To Floor Mounting Bracket	121	Cover, Timing	428
Clock/Thermometer	140	Contacts, Horn Button	110, 114	Cover, Torque Converter	418-419, 438-443
Clutch Adjustment Rod	558	Control Arm Bushing	297, 301-302	Cover, Valve	418-419, 438-443
Clutch Assembly	554-556	Control Arm Bumper	302-303	Cover, Vinyl Floor	558
Clutch Bellcrank	559	Control Arm Bushing	297, 302-303	Cover/Seal, Clutch Rod	558
Clutch Bellcrank Mount	559	Control Arm Shaft	302	Covers, Pedal	122
Clutch Conversion Bracket	559	Control, Air Flow	398	Cowl Hood Scoop	242
Clutch Disc	554	Controller, Electric Fan	385	Cowl Hood Screen	240
Clutch Fluid Reservoir	556	Conversion Kit, 6-cyl to V8	457	Cowl Induction Hood	240
Clutch Fork Pivot Ball	557	Conversion Kit, Mechanical Speedometer	538	Cowl Panel	249
Clutch Fork Return Spring	557	Conversion Set, Power Door Lock	264	Cowl Top Vent Grill Panel	249
Clutch Fork Stud	557	Conversion, Disc Brake	330-331, 337	Crank Handle, Inner Window	48-49
Clutch Housing Cover	553	Conversion, Electric Kickdown	544	Crankcase Evacuation System	436
Clutch Installation Set	550	Conversion, Leaf Spring	323	Crankcase Vent Filter	436
Clutch Linkage	557	Conversion, Manual Transmission	549	Crankcase Vent Tube	436
Clutch Master Cylinder	556	Converter Cover, Torque	536	Crankcase Vent Valve Service Tag	190
Clutch Pedal Assembly	126	Converter, Torque	534	Crankshaft Balancer	421
Clutch Pedal Bushing	126	Converter, Torque	534	Crankshaft Pulley	425-426
Clutch Pedal Pad	125	Convertible Top	255	Crankshaft Tool	414
Clutch Pedal Pad Trim Plate	125	Convertible Top Binding End Clip	255	Crate Engines	466-416
Clutch Pedal Rubber Stopper	126	Convertible Top Bolt	255	Crimp Tool	465
Clutch Pivot Ball	558-559	Convertible Top Bushing	256	Cross Rail, Rear	271
Clutch Pivot Bushing	558	Convertible Top Cable	256	Crossmember, Transmission	313, 541, 550
Clutch Push Rod	557	Convertible Top Cylinder	256	Cruise Control Decal	193
Clutch Push Rod Boot	558	Convertible Top Cylinder	256	Cruise Control Unit	113
Clutch Push Rod Return Clip	558	Convertible Top Frame Weatherstrip	201	Cruise Control Unit	113
Clutch Release Fork	556	Convertible Top Hose Clip	256	Cruise Control Unit	113
Clutch Reservoir	558	Convertible Top Hose Clip	256	Cup Holder, Center Console	118
Clutch Rod Cover/Seal	558	Convertible Top Knuckle Hook	256	Cup, Door Handle	48
Clutch Set	555	Convertible Top Latch	256	Curb Feelers	363
Clutch Slave Cylinder	556	Convertible Top Latch Screw	256	Cushion, Bumper Guard	238
Clutch Throwout Bearing	556, 558	Convertible Top Manual	149	Cushion, Seat	30
		Convertible Top Molding Clip	255	Cutout Switch, Battery	569

Product Index

Cutout, Exhaust	528
Cylinder Head	451
Cylinder Head Bolts	447

D

Damper Pad, Insulation	11
Damper, Harmonic	427
Dash Ashtray	97
Dash Bezel	62, 96
Dash Clock	35, 65
Dash Gauge Lens	63
Dash Gauges	69
Dash Insert	63
Dash Knob Set	92
Dash Pad	62
Dash Pad Protector	62
Dash Panel	250
Dash Panel Emblem	185
Dash Panel Light Dimmer	81
Dash Panel Wiring Harness	80
Dash to Back-Up Switch Wiring Harness	573
Dash Trim Molding	62
Dash Vent Outlet	399
Dash Vent Screw	398
Date-coded Spark Plug Wires	470
Dealer Accessory Price List	150-151
Dealer Service Tag Decal	190
Decal	129
Decal Applicator	199
Decal, AC	190, 193-194
Decal, Air Cleaner	186
Decal, Air Filter Service Instructions	189
Decal, Air Shock	196
Decal, Astro Ventilation Window	193
Decal, Battery	190
Decal, Battery Disconnect Position	569
Decal, Berger Chevrolet	190
Decal, Catalytic Converter	194
Decal, Coil Spring	196
Decal, Cooling System	188
Decal, Crossed Flags Valve Cover	187
Decal, Cruise Control	193
Decal, Dealer Add-On Accessory	195
Decal, Disc Brake Shield	196
Decal, Emissions System	189
Decal, Fan Shroud	188
Decal, Fuel Recommendation	196-197
Decal, GM Door Jamb	195
Decal, Hood	197
Decal, Jacking Instruction	192
Decal, Leaf Spring	196
Decal, Mirror	142
Decal, Oil Filter	190
Decal, Push Start Warning	196
Decal, Rear Panel	199
Decal, Shock	196
Decal, Spare Tire	191
Decal, Steering Box	196
Decal, Tire Pressure	192
Decal, Valve Cover	187
Decal, Vehicle Maintenance	195
Decal, Washer Bottle	191, 299
Decal, Wheel Ornament	362
Decal, Window	193
Decal, Yenko	188, 197
Decals	187-199
Deep Tub Inner Wheel Housing	315
Deflector Deck, Air	398
Deflector, Air Outlet	399
Defogger Switch Bezel	92
Defroster Vent Assembly	398
Degreaser	172
Degree Wheel Tool	414
Delete Cover, AC	396

Delete Plate, Radio	84
Diagram, Wiring	150
Dial Indicator Tool	414
Diaphragm, Master Cylinder Cover	342
Diaphragm, Vacuum Secondary	504
Dielectric Grease	465
Differential Cover	329
Differential Cover Bolt Set	329
Differential Cover Filter/Mag	329
Differential, 3rd Member	327
Differential, Manual	155
Digital Gauges	68-69
Digital Ignition Points Conversion	466
Dimmer Switch, Headlamp	93, 113
Dimmer, Dash Panel Light	81
Dip Stick, Engine Oil	461
Dip Stick/Tube, Engine Oil	461
Dipstick Tube Seal, Oil	460
Dipstick, Oil	461
Dipstick, Transmission	539
Disc Brake Conversion	330-333, 336-337
Disc Brake Shield Decal	196
Disc, Clutch	554
Disconnect Switch, Battery	578
Distributor, Advance Curve	464, 469, 474-475
Distributor Advance Curve Set	469
Distributor Bolt	475
Distributor Cap / Rotor	464, 466, 469, 477
Distributor Condenser	476
Distributor Drive Gear	464
Distributor Gasket	477
Distributor Gear Assembly	475
Distributor Head Down Clamp	475
Distributor Lead	476
Distributor Points	466, 468, 476
Distributor Shims	475
Distributor Tool	475
Distributor Tune-Up Set	477
Distributor Vacuum Advance	478
Distributor Vacuum Line	476
Distributor Vacuum Tee, 3-way	476
Distributor Washer	475
Distributor Wire Grommet	475
Divider, Trunk	272
Doghouse, Front End	249
Dome Lamp	59
Dome Lamp Bulb	59
Dome Lamp Dimmer	59
Dome Lamp Screw	59
Dome Lamp Switch	59
Dome Lamp Wire Harness	59, 574
Door & Trunk Lock Set	262
Door Alignment Wedge	259
Door Bumper	172
Door Edge Guard	201
Door Frame Weatherstrip	201
Door Glass	208
Door Glass Channel	202
Door Glass Frame	209
Door Glass Weatherstrip	203
Door Handle Clip	288
Door Handle Clip Pliers	217
Door Handle Cup	48
Door Handle Gasket, Outer	205
Door Handle Mechanism, Inner	49
Door Handle O-Ring	261
Door Handle Push Button, Outer	261
Door Handle Spring	259
Door Handle, Inner	48
Door Handle, Outer	261, 264-265
Door Hinge	258
Door Hinge Arm	258
Door Hinge Bolt	259
Door Hinge Bushing	259
Door Hinge Pin	259

Door Hinge Repair Set	259
Door Hinge Roller Detent Repair Set, Lower	259
Door Inside Locking Rod Clip	160
Door Jamb Decal	290
Door Jamb Seal, U-Shape	203
Door Jamb Switch	59
Door Jamb w/ Quarter Panel Skin	269
Door Jamb Windlace	46
Door Jamb Windlace Clip	46
Door Latch	259
Door Latch Clips	288
Door Latch Rod Clip	259
Door Latch Screws	259, 287
Door Ledge Molding Clip	213
Door Lock	262, 264
Door Lock Cylinder Gasket	260
Door Lock Cylinder Retainer	260
Door Lock Ferrule	47
Door Lock Knobs	47
Door Lock Pawl	260
Door Lock Rod	260
Door Lock Rod Retaining Clip	260
Door Lock Set, Glove Box & Trunk	262
Door Lock Striker	260
Door Lock Striker Washer	260
Door Mechanism Return Spring	49
Door Mirror, Outer	266-267
Door Opener, Remote	264
Door Panel Clips	288
Door Panel Coil Spring	49
Door Panel Emblem	46
Door Panel Installation Clip	46
Door Panel Molding, Interior	46
Door Panel Plug	288
Door Panel Remote Mirror Bezel	267
Door Panel Tool	49
Door Panel, Interior	36-42
Door Patch Panel	258
Door Pull Handle	45
Door Shell / Skin	258
Door Sill Plate	9
Door Striker Bolt Washer	260
Door Weatherstrip Fastener	204
Door Window Crank Handle	48-49
Door Window Frame Molding	210
Door Window Guide Stabilizer	380, 490
Door Window Roller	263
Door Window Track	209, 263
Door, Fuel	239
Door, Glove Box	59
Down Pipe, Exhaust Manifold	519
Drag Link	297
Drag Link Adaptor	297
Drain Plug Gasket, Oil Pan	459
Drain Plug, Oil Pan	459
Drain Plug, Transmission Case	550
Drier / Receiver, AC	403
Drip Rail Support	254
Drive Gear Bearing Ring, 4-Speed	551
Drive Gear, Distributor	464
Drive Shaft, Oil Pump	458
Driver, Bearing Race and Seal	326
Driveshaft Safety Loop	326
Driveshaft U-Joint	326
Drivetrain Manual	155
Drop Spindles, Brake Rotor	299, 331
Drum Brake Adjuster	351
Drum Brake Kit	328, 350
Drum Brake Spindle	299
Drum Brake Wheel Cylinder	351
Dual Battery Control System	578
Deck, Heater	398
Duffel Bag	138
Dust Boot, Tie Rod	298
Dust Cap, Brake Bleeder Screw	392

Product Index

Dust Seal, Power Steering Control Valve	295
Dust Shield, Bellhousing	551
DVD, Automotive	155

E

Eccentric Eliminator Set	303
Eccentric Lock-Out Set	303
EFI Conversion Kits	511
EFI Fuel Return Adapter	510
EFI Harness	511, 575
Electric Cooling Fan	382
Electric Fan Bracket	384
Electric Fan Controller	385
Electric Fan Relay	385
Electric Fan Spacer	381
Electric Fan Wiring Harness	382, 384
Electric Fuel Pump	494
Electric Kickdown Conversion	544
Electric Trunk Release	273
Electric Vacuum Pump	340
Electric Water Pump	391
Electric Water Pump Drive Set	391
Electric Water Pump Relay	391, 579
Electrical Manual	156
Electrical Surge Protector	484
Electrical Tool	573
Electronic Distributor	475
Electronic Speed Sensor Lead	538
Element, Air Filter	435
Emblem Adhesive	183
Emblem Nut	185
Emblem Template	185
Emblem, Air Cleaner	430
Emblem, Console	121
Emblem, Dash Panel	185
Emblem, Fender	129, 181, 183
Emblem, Glove Box	95
Emblem, Grill	180
Emblem, Hood	180, 183
Emblem, Horn Cap	109
Emblem, Interior Door Panel	46, 185
Emblem, Quarter Panel	184
Emblem, Rear Panel	184-185
Emblem, Seat Back	32
Emblem, Seat Belt	35
Emblem, Steering Wheel	109
Emblem, Trunk Lid	184-185
Emblem, Wheel Cap	361-362
Emergency Brake Cable	346
Emissions System Decal	189
End Cap, Seat Molding	32
End Cap, Windlace	46
End Link, Sway Bar	305
Engine	406-407
Engine Air Cleaner	425
Engine Assembly Grease	412
Engine Bolt Set	447-448
Engine Controller Set	417
Engine Cooling Fan Blade	380
Engine Cover	416
Engine Distributor	474
Engine Dress-Up Sets	438-443
Engine Frame Bracket	411
Engine Frame Mount	314, 411
Engine Gaskets	454
Engine Grease	412
Engine Manuals	152-153
Engine Mount	421, 540
Engine Oil	463
Engine Oil Cooler	462
Engine Oil Dip Stick/Tube	461
Engine Paint	177
Engine Piston	451
Engine Pull Bracket	415

Engine Push Rod	455
Engine Refinishing	415
Engine Rocker Arm	455
Engine Rocker Arm Lock	455
Engine Rocker Arm Stud	455
Engine Rocker Arm Stud Girdle	455
Engine Rotation Adapter Tool	414
Engine Tilter Tool (Hoist)	415
Engine Valve Spring	455
Engine Wiring Harness	575
Engine, Crate	404-409, 416
Epoxy Putty	283
Epoxy, Metal Weld	217, 488, 529
Epoxy, Plastic Weld	283
Evaporator Box Seal	402
Evaporator Case Drain Hose	403
Evaporator Core Housing Seal	402
Evaporator Core Outlet Tube Clamp	402
Evaporator Core Pipe Seal	402
Exhaust Balance Pipe	519
Exhaust Clamp	516, 520
Exhaust Collector Gasket	514
Exhaust Cut-Out	528
Exhaust Cut-Out Controller	528
Exhaust Cut-Out Pipe	528
Exhaust Flange	516
Exhaust Hanger	520
Exhaust Headers	449, 512, 515
Exhaust Heat Shoe Stud	516
Exhaust Manifold	421, 515
Exhaust Manifold Bolt Lock	517
Exhaust Manifold Bolt Set	514, 517
Exhaust Manifold Down Pipe	519
Exhaust Manifold Front Pipes	519
Exhaust Manifold Heat Shoe	516
Exhaust Manifold Stud Set	517
Exhaust Manifold Tube Extension	516
Exhaust Manual	156
Exhaust Pain	528
Exhaust Pipe	516
Exhaust Pipe Gasket	516
Exhaust Repair Kit	520
Exhaust System	519, 526-527
Exhaust Tips	529
Exhaust Turn Down	528
Exhaust Wrap	530
Exhaust X-Pipe	519
Exhaust Y-Pipe	519
Expansion Valve, AC	403
Extended Wheel Well Opening	271
Extension Harness, Transistor Ign Amplifier	479
Extension Molding, Park Lamp Bezel	214
Extension, Floor Pan to Firewall	252
Extension, Horn Wire	115
Extension, Sill Plate	9
Exterior Screw Set	236
Extinguisher Mounts	171
Eye Brow Molding	214

F

Fact & Feature Manual	151
Factory Manual	149
Fan Bracket, Electric	384
Fan Clutch to Water Pump Bolt Set	381
Fan Controller	385
Fan Mounting Gasket	384
Fan Shroud, Radiator	379, 382
Fan Spacer	381
Fan Spacer Bolt Set	381
Fan Switch	382, 385
Fan Switch, Heater / AC Blower	398
Fan Temperature Sending Unit	384
Fan Thermostat, Electric	385
Fan, Radiator	380-383
Fan/Pulley, Alternator	484

Fastener Bolt Set	236
Fastener, Door Weatherstrip	236
Fasteners and Bolts	225, 284-289
Fasteners, Front End	236
Fasteners, LED Accessory	146
Fasteners, Under Hood And Trunk	239
Feed Wire, Power Tailgate Window	573
Feeler Gauges	479
Felt Washer, Battery Post	567
Felt, Fuel Tank Anti-Squeak	487
Fender	247
Fender Apron	247
Fender Brace	248
Fender Cover	160
Fender Emblem	129, 181-183
Fender Eyebrow Molding	214
Fender Ornament	248
Fender Panel, Inner	247
Fender Patch Panel	248
Fender Skirt Bolt	284
Fender Skirt Brace	247
Fender to Cowl Bolts	236, 284
Fender Well Splash Apron Set	204
Fender Well, Inner	247
Fender Wiring Harness Strap	247, 574
Ferrule, Door Lock	47
Fiber Optic Lamp Housing Bezel	224
Fiberglass Door Skin	258
Fiberglass Front Bumper	237
Fiberglass Hood Scoop	242-243
Fiberglass Rear Bumper	237
Fiberglass Trunk Lid	272
Filler Panel Bumper, Rear Seat	33
Filler Panel, Bumper	237
Filler Panel, Radiator	376
Filler Panel, Trunk Floor to Quarter	276
Filler Spout	463
Filler Tube, Oil	461
Filler, Rear Cross Rail	271
Filter Adapter, Oil	459
Filter Cleaner/Degreaser, Air	457
Filter Connector, Oil	459
Filter Cover, Oil	462
Filter Magnet, Transmission	538
Filter Sealing Grease, Air	435
Filter, Air	434
Filter, Automatic Transmission	538
Filter, Fuel	492
Filter, Ignition Noise	465
Filter, Oil	462
Filter, Tachometer Noise	80
Fire Extinguisher	171
Fire Extinguisher Mounts	171
Firewall Carpet Guard	9
Firewall Heater Delete Plate	397
Firewall Insulation	9-13
Firewall Pad Retainer Clip	9
Firewall Panel	250
Firewall Plug, Master Cylinder	343
Firewall Relay Cover	265
Firewall Retainer Clips	289
Firewall To Floor Brace	252
Firewall Wire Port	581
Fitting, AC POA Valve	403
Fitting, Brake Line	335
Fitting, Heater Hose	387, 392
Fitting, Intake Manifold	449
Fitting, Oil Line Block	119
Fitting, Oxygen Sensor	517
Fitting, Power Brake Inlet Manifold	343
Fitting, Water Pump Hose Outlet	392
Fittings, Zerk	298
Flange, Exhaust	516
Flange, Header Collector Ball	514
Flaring Tool	353

Product Index

Flasher, Hazard Lamp	93, 231	Fuel Pump Block Off Plate	491	Gauge Assembly, Console	118	
Flexi-Rod, Shift Actuator	546	Fuel Pump Bolt	492	Gauge Base, Console	118	
Flexplate	535	Fuel Pump Mounting Plate	491	Gauge Bulb, Console	118	
Flexplate To Crankshaft Bolt	535	Fuel Pump Push Rod	491	Gauge Conversion Set	69	
Floor Brace	252-253	Fuel Pump Relay	579	Gauge Hardware, Console	69	
Floor Cover, Vinyl	8	Fuel Pump Safety Switch	495	Gauge Kit, Digital	118	
Floor Heat Shield	531	Fuel Pump Vacuum/Pressure Tester	493	Gauge Lamp Bulbs	81	
Floor Insulation	531	Fuel Recommendation Decal	196-197	Gauge Lens, Console	118	
Floor Mats	14-17	Fuel Return Adapter, EFI	510	Gauge Lens, Dash	63	
Floor Mount, Steering Column	111	Fuel Return Line	496	Gauge Mount Angle Ring	81	
Floor Pan	250-252	Fuel Sending Unit	79, 490	Gauge Mount Pedestal	81	
Floor Pan & Trunk Restoration Set	250	Fuel Sending Unit Float	490	Gauge Oil Line, Console	119	
Floor Pan Plug	252	Fuel Sending Unit Screen	488	Gauge Panel	81	
Floor Pan Repair Set	283	Fuel Tank	486	Gauge Pod, Console	118	
Floor Pan to Firewall Extension	252	Fuel Tank Anti-Squeak Felt	487	Gauge Resistor	80	
Floor Shifter	542-545	Fuel Tank Mounting Strap	487	Gauges	64-77	
Flywheel	553	Fuel Tank Mounting Strap Bolt	487	Gear Assembly, Distributor	475	
Flywheel Cover	536	Fuel Tank Sealer	488	Gear Indicator	113, 544	
Flywheel Ring Gear	553	Fuel Tank Sender Wire Harness	490, 574	Gear Indicator Sending Unit	80	
Flywheel to Crankshaft Bolt	553	Fuel Tank Sending Unit Gasket	490	Gear Indicator, Transmission	544	
Flywheel Tool	415	Fuel Tank Sending Unit Lock Ring	490	Gear Oil, Synthetic	329	
Flywheel/Clutch Housing Cover	553	Fuel Vapor Charcoal Canister	495	Gear, Distributor Drive	464	
Foam, Seat	30	Fuel Vapor Line	496	Gear, Speedometer Driven	79	
Fork, Clutch Release	556	Fuse Block	578	Gear, Timing	428-429	
Forward Console Plate Hardware Set	121	Fuse Block Screws	287	Gearbox	294	
Frame Bracket, Idler Arm	298	Fuse Tap/Fuse Holder	578	Gearshift Fork, Transmission	551	
Frame Mount, Engine	314	Fuses	578	Generator	483	
Frame Rail	138	Fuzzy Dice	138	Generator Warning Tag	190	
Frame Rail Brace	271	G			Girdle, Rocker Arm Stud	455
Frame, Door Glass	209	Garage Art	141	Glass	208-209	
Frame, License Plate	137, 145, 147	Gas Cap	489	Glass Channel, Tailgate	205	
Frame, Seat	30	Gas Line Support Bracket	496	Glass Frame, Quarter	209	
Frame, Vent Window	209	Gas Pedal Mounting Pin	122	Glass Holder Tool	209	
Freeze Plugs	448	Gas Pedal Pad	122, 254	Glass Installation Tape	201	
Front Air Dam	186	Gas Pedal Rod	122	Glass Molding Clip Installation Tool	217	
Front Bumper	237	Gas Pedal Rod Support	123	Glass Rul Channel, Door	202	
Front Disc Brake Conversion	330	Gas Pedal Spring	122	Glass Seal Rope Tool	217	
Front Disc Caliper Inlet Line	344	Gas Tank	486	Glass Support, Windshield	209	
Front End	249	Gas Tank Vent Valve	488	Glasspack Muffler	522	
Front End Doghouse	249	Gasket Set, Manual Transmission	549	Glove Box	95	
Front Frame Rail Support	252	Gasket Set, Paint Seal	206	Glove Box & Trunk Lock Set	262	
Front Lamp Wiring Harness	570	Gasket, Air Cleaner To Carburetor	502	Glove Box Clips	95, 288	
Front Runner Drive	417, 424	Gasket, Antenna	91	Glove Box Door	95	
Front Side Marker Lamp	120	Gasket, Brake Backing Plate	348	Glove Box Door Bumper	95, 206	
Front Spoiler	186	Gasket, Carburetor	502	Glove Box Emblem	95	
Front Sump Oil Pan, V8 Conversion	457	Gasket, Distributor	477	Glove Box Lamp Harness	573	
Front Wheel Bearing Grease Cap	300	Gasket, Door Handle	205	Glove Box Latch Striker	95	
Fuel Additive	488	Gasket, Door Lock Cylinder	260	Glove Box Lock Retainer	95	
Fuel Bypass Regulator	495	Gasket, Engine Overhaul	454	Glove Box Locks	95	
Fuel Cap	489	Gasket, Exhaust Collector	514	Glove Box Rubber Stopper	95	
Fuel Clips	345	Gasket, Exhaust Pipe	516	Glove Box Screws	95, 288	
Fuel Door Bumper	207, 239, 488	Gasket, Fan Mounting	384	Glove, Headliner	307	
Fuel Door/License Plate Bracket	239, 488	Gasket, Fan Filler Neck to Body	488	Grease Cup, Wheel Bearing	50	
Fuel Feed Line	496	Gasket, Fuel Tank Sending Unit	490	Grease, Air Filter Sealing	435	
Fuel Filler Assembly	489	Gasket, Head	454	Grease, Bushing	306-307	
Fuel Filler Neck	488	Gasket, Header	514	Grease, Dielectric	465	
Fuel Filler Neck to Body Gasket	488	Gasket, Intake Manifold	454	Grease, Engine	412	
Fuel Filter	492	Gasket, License Lamp	232	Grill	234-235	
Fuel Filter Bracket	492	Gasket, Master Cylinder	342	Grill Emblem	180	
Fuel Filter Spring	492	Gasket, Oil Pan	459	Grill Guard	235	
Fuel Gauge	64	Gasket, Oil Pan Drain Plug	459	Grill Molding	214, 235	
Fuel Hose	493	Gasket, Outer Door Mirror	267	Grill Mounting Bracket	235	
Fuel Hose Clamps	289	Gasket, Park Lens	225	Grill Nut	235	
Fuel Hose Stamp	489	Gasket, Side Marker	227	Grill Reinforcement	235	
Fuel Injection Manual	156	Gasket, Tail Lamp	205, 229	Grill Rivet	235	
Fuel Injection System	510	Gasket, Thermostat	395	Grill, Kick Panel Speaker	89	
Fuel Inlet Nut	504	Gasket, Timing Cover	454	Grommet / Sleeve, Accelerator Rod	122	
Fuel Line	493, 496	Gasket, Transmission Pan	537	Grommet, AC Hose	402	
Fuel Line Clamp	496	Gasket, Trunk Lock Cylinder	273	Grommet, Convertible Top Motor	756	
Fuel Line Disconnect Set	496	Gasket, Valve Cover	418, 454	Grommet, Core Support	581	
Fuel Line Y-Block	493	Gasket, Water Pump	390	Grommet, Distributor Wire	475	
Fuel Pressure Gauge	493	Gaskets, Hood Louver	244	Grommet, Heater Core	396	
Fuel Pressure Regulator	495	Gated Transmission Shifter	545	Grommet, Park Brake Rod	346	
Fuel Pressure Tester	413			Grommet, Speedometer Cable	448	
Fuel Pump	491, 494, 510			Grommet, Valve Cover	77	

Product Index

Grommet, Wiper Motor	280	Headlamp Bezel Anchor Nut	221, 235	Hidden Wipers	280
Grommet, Wire	581	Headlamp Bezel Screw	221	Hinge, Door	258
Ground Plate, Antenna	91	Headlamp Bucket Housing	222	Hinge, Hood	244
Ground Strap Set	565	Headlamp Dimmer Switch	93, 113	Hinge, Trunk Lid	272
Ground Strap, Antenna	91	Headlamp Dimmer Switch Bezel	93	Hoist, Engine Tilter Tool	415
Ground Wire, AC Compressor	401	Headlamp Filler Panel	222	Hold Down, Valve Cover	446
Ground Wire, Instrument Cluster	63	Headlamp Instruction Tag	193	Hood	240
Ground Wire, Voltage Regulator	484	Headlamp Molding	214	Hood Adjuster	245
GT-Sport Front Clip	306	Headlamp Mounting Bucket	222	Hood Adjuster Screw	245
Guard, Bumper	238	Headlamp Relay & Fuse	220	Hood Bumper	206, 245
Guard, Grill	235	Headlamp Retaining Ring	220-221	Hood Decal	197
Guide Plate, Brake Shoe	351	Headlamp Retaining Ring Screw	221	Hood Emblem	180
Guide, Brake Cable	347	Headlamp Shield	220	Hood Hinge	244
Guide, Front Window	263	Headlamp Socket & Wiring	220	Hood Hinge Bolt	245, 284
Guide, Shoulder Belt	35	Headlamp Switch	92	Hood Hinge Spring	245
Guides, Trunk Lid	272	Headlamp Switch Knob	92	Hood Insulation	241
H		Headlamp Switch Nut	92	Hood Insulation Retainer	241
Halogen Headlamp Harness	220	Headlamp Switch Nut Tool	92	Hood Lamp Wire Harness	273, 570
Halogen Headlamps with Adjustment Knobs	218	Headlamp Washer Nozzle	221	Hood Latch	235, 246
Handle Cup, Door	48	Headlamp Washer Nozzle Nut	221	Hood Latch Pilot Bolt	246
Handle Mechanism, Inner Door	49	Headlamp Wiring Harness	220, 570	Hood Latch Pin	246
Handle Washer Plate, Window	49	Headliner	53-56	Hood Latch Support	246
Handle, Door Pull	45	Headliner Bow	57	Hood Louver Bracket	244
Handle, Inner Door	48	Headliner Bow Clip	57	Hood Louver Gaskets	244
Handle, Outer Door	261	Headliner Glue	57	Hood Louvers	244
Handle, Park Brake Release	347	Headliner Molding	57	Hood Molding	214
Handle, Vent Window	48-49	Headliner Retainer	57	Hood Pin	160, 246
Handle, Window Crank	48-49	Headliner Tool	57	Hood Prop	245
Handle/Knob, Shifter	547, 563	Headliner Trim	57	Hood Release Cable	245
Hanger Hook, Coat	58	Headrest	31	Hood Scoop	243-244, 433
Hanger, Muffler	520	Headrest Bracket, Bucket Seat	32	Hood to Cow Seal	204
Hanger, Tailpipe	520	Headrest Cover	31	Hook, Coat Hanger	58
Hanger/Resonator, Tailpipe	520	Headrest Lock, Bucket Seat	32	Hook, Rear Seat Floor	253
Hardware Kit, Brake	351	Heat Riser Valve	516	Horn	115
Hardware, Body Mount	307	Heat Shield, Air Intake	437	Horn Button Cap Retainer	109
Hardware, Console Gauge	119	Heat Shield, Carburetor	504-505	Horn Button Contacts	110, 114
Hardware, Shock Absorber Mounting	320	Heat Shield, Floor	531	Horn Button, Steering Wheel	98, 104, 109-110
Harmonic Balancer	427	Heat Shield, Hose	531	Horn Cap	107, 109
Harmonic Balancer Cover	426	Heat Shield, Muffler	522, 531	Horn Cap Emblem	109
Harmonic Balancer Puller	426	Heat Shield, Spark Plug Wire	472-473	Horn Cap Mounting Kit	110
Harmonic Balancer Tool	426	Heat Shield, Starter	480-481	Horn Cap Mounting Ring	110, 114
Harmonic Balancer Woodruff Key	426	Heat Shield, Turbo	531	Horn Relay	115
Harmonic Damper	427	Heat Shield, Wire	531	Horn Relay Pigtail	115
Harness, AC	574	Heat Sleeves	530	Horn Relay Switch	115
Harness, Chassis	575, 577	Heat Stove Stud, Exhaust	516	Horn Wire Extension	115
Harness, Courtesy Lamp Wire	574	Heat Stove, Exhaust Manifold	516	Hose Adapter, Coolant	80
Harness, Gauge	80, 119	Heater Box / Case	396-397	Hose Clamp Pliers	387
Harness, Glove Box Lamp	573	Heater Box Cover Mounting Kit	396	Hose Clamps	289, 387, 444
Harness, Headlamp	80, 220	Heater Box Resistor Screw	397	Hose Clip, PCV	444
Harness, Heater	479	Heater Box Seal	397	Hose Crimper Tool, Air Conditioning	403
Harness, Ignition Amplifier Extension	574	Heater Box Wire Retainer	396	Hose Marking Ink	489
Harness, Speed Warning	574	Heater Control Cable	398	Hose Stamps	489
Harness, Tachometer	574	Heater Control Knob	399	Hose The Straps, Washer	278
Harness, Wire	571, 575	Heater Control Lens Clip	399	Hose, Air Cleaner	436
Hat / Cap	129-131, 134-136	Heater Control Lever	399	Hose, AIR Injection / Smog Hose	518
Hat / Lapel Pin	130	Heater Control Valve	397	Hose, Brake	345
Hatchback Weatherstrip	204	Heater Control Valve Mounting Rivet	397	Hose, Fuel	495
Hazard Lamp Flasher	93	Heater Core	396	Hose, Heater	386
Hazard Switch Knob	92	Heater Core Grommet	396	Hose, HVAC	398
Head Bolt Set	447	Heater Core Mounting Clip	396	Hose, PCV Valve	444
Head Gasket	454	Heater Core Mounting Strap	396	Hose, Power Steering	293, 296
Head, Cylinder	451	Heater Core Seal	396	Hose, Rack and Pinion Conversion Set	296
Header Bolt Set	514	Heater Core Tube Retainer	397	Hose, Radiator	386
Header Collector Ball Flange	514	Heater Delete Plate Hardware	396	Hose, Radiator Overflow	386
Header Collector Reducer	512	Heater Duct	398	Hose, Steering Control Valve	293
Header Gasket	514	Heater Fan Switch	398	Hose, Steering Control Valve	293
Header Wrap	530-531	Heater Harness	574	Hose, Water Pump Bypass	390
Header-Adapter Alternator Bracket	485	Heater Hose	386	Hose, Windshield Washer	278
Heads, Exhaust	420, 512-513, 515	Heater Hose Bracket	387	Housing Cover, Flywheel/Clutch	553
Headlamp	218-220	Heater Hose Clamp	387	Housing, Carburetor Second Spring	506
Headlamp Adjusters	221	Heater Hose Clip	387	Housing, Headlamp Bucket	222
Headlamp Adjusting Spring	221	Heater Hose Collar	387	Housing, Rear Axle	327
Headlamp Bezel	221-222	Heater Hose Fitting	387, 392	Housing, Tail Lamp	229
		HEI Battery/Tach Pigtail	475	Hub Cap	356-357, 359, 361-364, 367, 369-370
		HEI/F Distributor	474	Hub, Steering Wheel	110
		Hi Temp Coating	530	Hurst Roll/Control	340

Product Index

Hurst Throttle Rebuild Set	561
Hurst T-Handle Shifter	545
Hydraulic Brake Assembly Fluid	353
Hydraulic Clutch Assembly	556
Hydraulic Release Bearing	556
Hydraulic System Bleeder Set	256

I

Idle Stop Solenoid Control Wire	574
Idler Arm	297
Idler Arm Bearing	298
Idler Arm Bushing	297
Idler Arm Frame Bracket	298
Ignition Amplifier Wire Harness	479
Ignition Amplifier, Transistor	479
Ignition and Door Lock Set	262
Ignition Box	468
Ignition Coil	464, 466-469, 478
Ignition Coil Bolt	479
Ignition Coil Bracket	479
Ignition Coil Cover	418, 479
Ignition Coil Relocation Set	419
Ignition Coil Resistor	478
Ignition Coil Wire	465
Ignition Condenser	466, 476
Ignition Control Module	464, 466, 468-469, 478
Ignition Distributor	474
Ignition Distributor Bolt	475
Ignition Distributor Tool	475
Ignition Distributor Washer	475
Ignition Lock	262
Ignition Noise Filter	465
Ignition Points	466, 468, 476
Ignition Power Grid	464
Ignition Rotor	464, 466, 469, 477
Ignition Starting Instruction Sleeve	194
Ignition Switch	94
Ignition Switch Actuator	94
Ignition Switch Bezel	94
Ignition Switch Bezel Nut	94
Ignition Switch Bezel Nut Tool	94
Ignition System, TSP Power Pack	466
Ignition Tester	479
Ignition Vibration Bushing	465
Ignition Wire Separators	473
Ignition Wires	465, 467, 470-471
Indicator Lamp	573
Indicator, Shift	113
Inner Door Handle	48
Inner Rear View Mirror	50-51
Input Shaft Gear Roller	550
Insert, Dash	63
Insert, Rear Ashtray	97
Inspection Sheet, Pre-Delivery	197
Inspection Stamp	162, 489
Installation Kit, Upholstery	33
Installation Tape, Glass	201
Instructions, AM/FM Stereo	198
Instrument Cluster Gauge	64
Instrument Cluster Ground Wire	63
Instrument Cluster Lamp Socket	63
Instrument Cluster LED Upgrade	63
Instrument Cluster Lens Plug	80
Instrument Lamp Bulbs, LED	63
Instrument Panel	68, 81
Instrument Panel J-Clip	63
Instrument Panel Lamp Bulb	63
Insulation	9-13, 173
Insulation Retainer, Hood	241
Insulation Wrap	531
Insulation, Hood	241
Insulation, Muffler	531
Insulation, Seat Shelf	61
Insulation, Wire	384

Intake Manifold	419, 449-450, 501
Intake Manifold Bolt Set	417, 421, 448
Intake Manifold Fitting	449
Intake Manifold Gasket	454
Intake Manifold Heat Plate	449
Intake Screen, Oil Pump	456
Interchange Manual	151
Interior Door Panel	36-42
Interior Door Panel Emblem	185
Interior Door Lock Knob	47
Interior Manuals	158
Interior Paint	176
Interior Quarter Side Panel	36-42
Interior Rear View Mirror	51
Interior Screw Set	10
Interior Upholstery	18-25
Intermediate Oil Pump To Distributor Shaft	475

J

J-Clip, Instrument Panel	63
J-Type Clip Nut	284
Jack Base	275
Jack Storage Bag	275
Jack Wrench	275
Jack Wrench Storage Sleeve	275
Jack, Bumper	275
Jacket	134
Jacking Instruction Decal	192
Jet, Carburetor	503
Joint, Rag	111
Joint, Steering Coupling	295
Joint, Tilt Column	111
Junction Block	581
Jute Padding Insulation	241

K

Key Column Wiring Adapter	113
Key Cover	263
Key Set, Ignition & Trunk	263
Keychain	129-130, 138
Keyless Entry System	265
Kick Panel	43
Kick Panel Seal	43
Kick Panel Speaker	89
Kick Panel Speaker Baffles	87
Kick Panel Speaker Grill	89
Kick Panel Vacuum Actuator Cover	43
Kick Panel Vent Cable	43
Kick Panel Vent Cable Clip	43
Kick Panel Vent Cable Knob	43
Kickdown Bracket	509, 545
Kickdown Linkage Rod	546
Kickdown Wiring Harness	571
Knob Set, Dash	92
Knob, Automatic Gearshift	563
Knob, Column Shifter	113
Knob, Door Lock	47
Knob, Hazard Switch	92
Knob, Headlamp Switch	92
Knob, Heater Control	399
Knob, Kick Panel Vent Cable	43
Knob, Manual Transmission Shifter	547, 563
Knob, Radio	84-85
Knob, Seat Adjuster	32
Knob, Shift	547, 562-563
Knob, Turn Signal Lever	114
Knob, Vent Pull	399
Knob, Windshield Wiper Switch	94
Knukehook, Convertible Top	256

L

Lamp Assembly, Trunk	273
----------------------------	-----

Lamp Bracket, Courtesy Lamp	59
Lamp Bulb, Dome	59
Lamp Bulbs	232-233
Lamp Flasher	93
Lamp Screw, Dome	59
Lamp Socket, Instrument Cluster	63
Lamp, Courtesy	59
Lamp, Dome	59
Lamp, License Plate	232
Lamp, Park	223-225
Lamp, Side Marker	226-227
Lamp, Tail	228-231
Lamp, Underhood	245
Latch, Convertible Top	256
Latch, Door	259
Latch, Hood	246
Lead Cable, Antenna	291
Lead Wire, Starter Motor Power	574
LED Distributor	476
LED, Electronic Speed Sensor	538
LED, Oil Pressure Sending Unit	456
LED Spring	323-324
Leaf Spring Anchor Plate	324
Leaf Spring Bolt	325
Leaf Spring Bushing	325
Leaf Spring Clamp Rebuild Kit	325
Leaf Spring Conversion	323
Leaf Spring Decal	196
Leaf Spring Nut	325
Leaf Spring Pad	325
Leaf Spring Shackle	324
Leaf Spring Shackle Bushing	325
Leaf Spring U-Bolt	324
Leaf Spring Washer/Bolt	325
LED Clearance/Marker Light	227
LED Flasher	231
LED Headlamps	218
LED Lamp	230
Lens Plug, Instrument Cluster	80
Lens, Back-Up Lamp	228-229
Lens, Column Shift Gear Indicator	113
Lens, Dash Gauge	113
Lens, License Lamp	232
Lens, Park Lamp	224
Lens, Radio	84
Lens, Shift	113, 120
Lens, Side Marker	226, 227
Lens, Tail Lamp	228-230
Lever, Accelerator Throttle	123
Lever, Heater Control	399
Lever, Shift Detent	546
Lever, Steering Column	114
Lever, Tilt Wheel	113-114
Lever, Turn Signal	114
License Lamp Gasket	232
License Lamp Lens	232
License Lamp Socket & Wiring	232
License Plate	129-130, 145-146
License Plate Bracket/Fuel Door	239, 488
License Plate Bumper	207, 239
License Plate Frame	129, 137, 145, 147
License Plate Lamp	232, 430, 436, 578
License Plate Lamp Bumper	206
License Plate Transport	145
License Plate, Fasteners	145, 239, 287
Lifter, Camshaft	455
Light Bulb Covers	81
Light, LED Clearance/Marker	227
Light, Shift	81
Lighter Housing, Cigarette	96
Lighter Retainer, Cigarette	96
Lighter, Cigarette	96
Limited Slip Axle Lubricant Additive	327
Limited Slip Differential	327
Line, Brake	344

Product Index

Line, Console Gauge Oil	119
Line, Front Disc Caliper Inlet	344
Line, Fuel	493, 496
Line, Transmission Modulator Vacuum	540
Liner, Window Channel	207
Link Arm, Wiper Motor	280
Linkage Rod, Shift	546
Linkage, Clutch	557
Linkage, Column Shift	544-545
Literature, Automotive	148-159
Location Template, Antenna	91
Lock Button, Seat Back	32
Lock Cylinder Gasket, Trunk	273
Lock Cylinders	262
Lock Knob, Door	47
Lock Out Set, Alignment	302
Lock Plate Cover	113
Lock Ring, Fuel Tank Sending Unit	490
Lock Rod Clips	288
Lock-Up Kit, Torque Converter	534
Lock, Axle Shaft	328
Lock, Bucket Seat Headrest	32
Lock, Engine Rocker Arm	455
Locking Differential	327
Lockout, Vacuum Advance	478
Locks, Glove Box	95
Locks, Wheel	358
Louver, Hood	244
Low Fuel Warning Module	79
Low Pressure Hydraulic Brake Switch	343
Lower Control Arm	302
Lower Control Arm Hardware	302
Lower Control Arm, Tubular	301
Lower Door Hinge Roller Detent Repair Set	259
Lower Fan Shroud Clip	379
Lowering Spring	323
LS Conversion Kit	420
LS Engine Cover	419
LS Valley Cover	418
LS Valve Cover Adapters	418
LS Valve Cover Conversion Kit	418
LS Engine Exhaust Manifolds	515
Lug Nuts	356, 358-359, 361, 364-365, 368-370
Luggage Rack Instruction Tag	191

M

Magnetic Door Guard	172
Main Cap Bolt	456
Manifold Adapter, Carburetor	505
Manifold Bolt Lock, Exhaust	517
Manifold Bolt, Exhaust	517
Manifold Bolt, Intake	454
Manifold Gasket, Intake	448
Manifold Tube Extension, Exhaust	516
Manifold, AC Compressor	401-402
Manifold, Exhaust	421, 515
Manifold, Intake	417, 449-450
Manual Choke Cable	507
Manual Choke Cable Mount Bracket	507
Manual Trans Safety Housing	552
Manual Transmission	548-549
Manual Transmission Fluid	551
Manual Transmission Gasket Knob	549
Manual Transmission Shift Knob	547, 563
Manual Transmission TCS Switch	561
Manual, Axle & Differential	155
Manual, Bodywork	157
Manual, Brake	155
Manual, Chassis & Suspension	157, 159
Manual, Drivetrain	155
Manual, Engine	153
Manual, Exhaust	155
Manual, Fact & Feature	151
Manual, Factory	149

Manual, Fuel Injection	156
Manual, Owner's	149
Manual, Service	148
Manual, Shop	149
Manual, Transmission	154
Manual, Turbocharging	156
Manual, Welding	157
Manual, Wiring	156
Manuials, Carburetor	158
Manuials, Interior	158
Manuials, Paint & Body	158
Mass Air Flow Sensor	437
Mast, Antenna	90
Master Cylinder	332, 338-339
Master Cylinder Cover	342
Master Cylinder Cover Bail	342
Master Cylinder Diaphragm	342
Master Cylinder Firewall Plug	343
Master Cylinder Push Rod	343
Master/Slave Cylinder, Clutch	56
Mat Tape	152
Mat, Trunk	274
Mats, Floor	14-17
Mechanical Speedometer Conversion	538
Mechanics Set	170
Metal Line Clamp	345
Metal Signs	144
Met Weld Epoxy	217, 488, 529
Mini Sub Frame Set	306
Mini-Tub Fuel Tank Set	315
Mini-Tub Rear Shock	315
Mini-Tub Set	315
Mirror Bracket, Outer Door	267
Mirror Bracket, Rear View	261
Mirror Gasket, Outer Door	267
Mirror Hardware, Interior	289
Mirror Mounting Bushing	51
Mirror, Inner Rear View	50-51
Mirror, Outer Door	266-267
Mirror, Rear View	50-51
Modular Valve Transmission	538
Module, Ignition Control	464, 466, 468-469, 478
Module, Low Fuel Warning	79, 119
Module, Programmer	413
Molded Carpet	6-8
Molding	210-216
Molding Clip Nuts	285-286
Molding Clips	211, 213, 285
Molding End Cap, Seat	32
Molding Location Template	216
Molding Release Tool	217
Molding Screw, Rocker Panel	215
Molding Screw, Wheel Opening	215
Molding Tool, Windshield	217
Molding Trim, Seat	217
Molding, Armrest Base	45
Molding, Bucket Seat	32
Molding, Dash Trim	62
Molding, Door Panel	46
Molding, Door Window Frame	210
Molding, Fender Eyebrow	214
Molding, Grill	214, 235
Molding, Headliner	57
Molding, Hood	214
Molding, Park Lamp Bezel	214, 224
Molding, Quarter Window Trim	210
Molding, Rear Cove	216
Molding, Rear Panel	216
Molding, Rear Window	210
Molding, Rear Window Trim	57
Molding, Rocker Panel	215
Molding, Roof Drip	212
Molding, Trunk Lid	216
Molding, Vinyl Top	212, 257
Molding, Wheel Opening	215

Molding, Windshield	57, 210
Moldings, Inner Trim	58
Morse Cable Bracket	505
Motor Arm, Wiper	280
Motor Grommet, Wiper	280
Motor Mount Adapter	421
Motor Mount Bolt Set	411
Motor Mount Insert	410
Motor Mount Shims	411
Motor Mounts	314, 410-411, 540
Motor Oil, Break-In	419, 463
Motor, Convertible Top	256
Motor, Power Window	265
Motor, Windshield Wiper	280
Mount Set, Power Cylinder	295
Mount, Transmission	540
Mounting Adapter, Bucket Seat	27
Mounting Bracket, Park Brake Cable	347
Mounting Ring, Horn Cap	347
Mounting Screw, Rear View Mirror	51
Mounting Screw, Steering Wheel	110
Mounting Set, Back-Up Switch	550
Mounting Strap, Heater Core	396
Muffler	521-525
Muffler Assembly, AC	403
Muffler Hanger	80
Muffler Heat Shield	522, 531
Mug, Tumbler	138
Multi-Meter Tool	412

N

Neck, Fuel Filler	488
Neon Clock	141
Neon Sign	140-141
Neutral Safety Switch Actuator	93
Neutral Safety Switch Wire Harness	573
Neutral Safety/Back-Up Lamp Switch	93, 560
Noise Filter, Tachometer	80
Noise Suppressor, Radio	85
Nozzle, Headlamp Washer	221
Nozzle, Windshield Washer	278
Nut & Washer, Pitman Arm	295
Nut, Antenna Bezel	91
Nut, Emblem	185
Nut, Fuel Inlet	504
Nut, Grill	235
Nut, Headlamp Bezel Anchor	221, 235
Nut, Headlamp Switch	92
Nut, Headlamp Washer Nozzle	221
Nut, Pitman Arm	295
Nut, Power Steering Pulley	82
Nut, Radio Shaft	91
Nut, Rear Antenna Top	91
Nut, Shifter	561
Nut, Wheel Lug	356-359, 361, 364-365, 368-370

O

O-Ring, Brake Caliper	350
O-Ring, Door Handle	261
Oil	463
Oil Baffle, Lifter Valley	455
Oil Breather Cap	445
Oil Bypass Eliminator	462
Oil Cap	445
Oil Catch Tank	462
Oil Cooler Line, Transmission	540
Oil Cooler, Engine	462
Oil Deflector, Valve Train	455
Oil Dipstick	461
Oil Dipstick Tube Seal	460
Oil Filler Tube/Breather	461
Oil Filter	462
Oil Filter Adapter	459

Product Index

Oil Filter Connector	459	Paint, Undercoating	175	Pedal Rod, Accelerator	122
Oil Filter Cover	462	Paint, Underhood	179	Pedal Spring, Accelerator	122
Oil Filter Decal	190	Paint, Wrinkle Finish	178	Pedestal, Gauge Mount	81
Oil Filter Magnets	462	Pan, Floor	250-251	Perch, Axle Tube	324
Oil Filter Pre-screen	462	Pan, Transmission	537	Petcock, Radiator	376
Oil Filter Wrench	463	Pan, Trunk	276	Pickle Fork Set, Ball Joint	298
Oil Line Block Fitting	119	Panel Retainer Clips	289	Pigtail, Alternator	484
Oil Line Clip	119	Panel, Cow/Top Vent Grill	249	Pigtail, Back-Up Lamp	230
Oil Pan	419, 457-458	Panel, Fender Patch	248	Pigtail, Park/Turn Signal	225
Oil Pan Baffle	458, 459	Panel, Firewall	250	Pigtail, Radio	89
Oil Pan Battery Cable Clip	459, 567	Panel, Inner Sail	58	Pigtail, Speaker	89
Oil Pan Bolts	458, 460	Panel, Interior Door	36-42	Pigtail, Stop, Tail & Turn	230
Oil Pan Drain Plug	459	Panel, Interior Quarter Side	36-42	Pilot Bearing	551
Oil Pan Drain Plug Gasket	459	Panel, Kick	43	Pilot Bushing	551
Oil Pan Gasket	459	Panel, Outer Cow/ Side	248	Pin, Accelerator Pedal Mounting	123
Oil Pan Seals	459	Panel, Outer Rear Body	277	Pin, Door Hinge	259
Oil Pan Splash Shield	459	Panel, Quarter	269	Pin, Hat / Lapel	130
Oil Pressure Sending Unit	456	Panel, Rear Window to Trunk	277	Pin, Hood	246
Oil Pressure Sending Unit Lead	456	Panel, Sail	53-55	Pin, Hood Latch	246
Oil Pressure Switch Tool	456	Panel, Seat Back	33	Pinion Bumper, Rear Axle	328
Oil Pressure Wiring Bracket	456	Panel, Seat Side	33	Pinion Gear Crush Sleeve	328
Oil Pump	456	Panel, Shock Tower	321	Pinion Shim Set	328
Oil Pump Cover	456	Panel, Tail	277	Pinion Wedge	324
Oil Pump Drive Shaft	458	Panel, Trunk	274	Pipe, Vacuum Booster	449
Oil Pump Intake Screen	456	Panel, Wheelhouse	270-271	Piston, Engine	451
Oil Pump Primer	458	Park Brake Adjustment Nuts	346	Pitman Arm	297
Oil Pump Primer Tool	414	Park Brake Assembly	126	Pitman Arm Nut	295
Oil Pump To Distributor Shaft, Intermediate	475	Park Brake Cable	346	Pitman Arm Tool	298
Oil Return Screen	449	Park Brake Cable Bracket	346-347	Pivot Ball, Bellcrank	559
Oil Supply Adapter Plate	420	Park Brake Cable Connector	347	Pivot Ball, Clutch	557-559
Ornament, Wheel	362	Park Brake Cable Retainer	346	Plastic Repair Kit	173
Outer Cow/ Side Panel	248	Park Brake Cable Retainer Clip	346	Plastic Weld Epoxy	283
Outer Door Handle	265	Park Brake Guide Bar Spring	347	Plate, Brake Backing	348, 350
Outer Door Handle Push Button	261	Park Brake Lamp Switch	93	Plate, Carburetor Linkage	505
Outer Door Mirror	266-267	Park Brake Lamp Switch Clip	93	Plate, Console	116
Outer Rear Body Panel	277	Park Brake Release Handle	347	Plate, Console Gauge Mounting	118
Outer Rocker Panel	253	Park Brake Rod Grommet	346	Plate, Firewall Heater Delete	397
Outlet, Water	394	Park Brake, Push Button	346	Plate, Fuel Pump Block Off	491
Outside Mirror Mounting Set	67	Park Lamp	223-225	Plate, Fuel Pump Mounting	491
Oval Antenna Mast	90	Park Lamp Bezel	224	Plate, License	146
Overflow Bottle, Radiator	377	Park Lamp Bezel Extension Molding	214	Plate, Oil Supply Adapter	120
Owner's Manual	149	Park Lamp Bezel Molding	224	Plate, Remote Mirror Pivot	267
Owner's Manual Storage Bag	149	Park Lamp Lens	224	Plate, Shift Boot	121
Oxygen Sensor Bung	510	Park Lamp Socket & Wiring	225	Plate, Subframe Mounting	410
Oxygen Sensor Fitting	517	Park Lamp Socket Boot	225	Pliers, Brake Cable	353
Oxygen Sensor Plug	517	Park Lens Gasket	225	Pliers, Door Handle Clip	217
Oxygen Sensor Socket	517	Park Lens Screw	225	Pliers, Hose Clamp	387
Oxygen Sensor Wrench	517	Park Mat	172	Pliers, Spark Plug Terminal	472
P				Pliers, Windshield Molding Clip	217
Package Tray	60-61	Park/Neutral Relay Set	579	Plug Wire Heat Shield, Spark	473
Package Tray Insulation	61	Park/Turn Signal Pigtail	225	Plug, AIR/Smog Tube Eliminator	518
Package Tray Protector	61	Parking Brake Assembly	127	Plug, Alternator Adapter	421
Pad, Convertible Top	255	Parking Brake Cable	346	Plug, Axle Housing Fill	328
Pad, Leaf Spring	325	Parking Brake Cable Equalizer	347	Plug, Floor Pan	252, 278
Pad, Park Brake Pedal	125	Parking Brake Light Jumper Wire	573	Plug, Oxygen Sensor	517
Pads, Brake	335, 349	Parking Brake Pedal Pad	125	Plug, Positraction Differential Fill	327
Paint	176, 178	Parking Brake Trim Plate	125	Plug, Weatherstrip	204
Paint & Body Manuals	158	Parking Guide System, Laser	170	Points, Ignition	466, 468, 476
Paint and Body Markers	162	Partition, Seat to Trunk	61	Polish/Wax	163
Paint Mask Set, Wheel	362	Parts Tray	170	Polyurethane Bushing Set	303, 305, 307, 325
Paint Seal Gasket Set	206	Patch Panel, Fender	248	Positraction Decal	191
Paint Spray Gun	178-179	Patch, Repair	283	Positraction Differential Fill Plug	327
Paint, Brake Caliper	353	Pawl, Door Lock	260	Positraction Tag, Rear End	328
Paint, Clear Gloss	179	PCV Hose Clip	444	Positraction Unit	327
Paint, Coating	175, 178	PCV Valve	444	Poster	142
Paint, Exhaust	178	PCV Valve Hose	444	Power Brake Booster	338, 340
Paint, Factory Black	177	PCV Valve Hose Clamp	444	Power Brake Booster Check Valve	340
Paint, Metal-Mimic	177	Pedal Adjuster System	556	Power Brake Booster Hose	343
Paint, Primer	178	Pedal Assembly	122, 126-127	Power Brake Booster Hose Bracket	343
Paint, Rubber Undercoating	178	Pedal Bumper, Clutch	126	Power Brake Booster Tube	343
Paint, Rust Prevention	174	Pedal Bushing, Brake	126	Power Brake Inlet Manifold Fitting	343
Paint, Trunk	179	Pedal Bushing, Clutch	126	Power Brake Tube	344
Paint, Trunk Spatter	275	Pedal Mounting Pin, Accelerator	122	Power Brake Tube Shield	343
		Pedal Pads	122, 124-125, 127	Power Chip	414
		Pedal Pin, Brake/Clutch	126	Power Cylinder Mount Set	295
		Pedal Rod Support, Accelerator	123	Power Delay, Radio	85

Product Index

Power Disc Brake Identifier Tag	193
Power Door Lock Switch	264-265
Power Feed Wire, AC	574
Power Programmer	412-413
Power Steering Belt	292, 388
Power Steering Bracket	291
Power Steering Cap	291
Power Steering Control Valve Dust Seal	295
Power Steering Conversion Set	294
Power Steering Fluid	292
Power Steering Fluid Reservoir	290
Power Steering Gearbox	294
Power Steering Hose	293, 296
Power Steering Hose Bracket	293
Power Steering Hose Clamp	293
Power Steering Hose Retainer	293
Power Steering Hose Stamp	293
Power Steering Pulley	292, 426
Power Steering Pulley Nut	292
Power Steering Pump	290
Power Steering Pump Belt	288
Power Steering Pump Bracket	291
Power Steering Pump Cap	291
Power Steering Pump Mounting Stud	295
Power Steering Pump Rebuild Kit	291, 293
Power Steering Pump Spacer	290
Power Steering Reservoir	290
Power Steering Slave Cylinder	295
Power Steering Valve	295
Power Tailgate Window Feed Wire	573
Power Valve, Carburetor	503
Power Window Harness Boot	265
Power Window Motor	265
Power Window Relay	265
Power Window Set	265
Power Window Switch	265
Power Window Switch Clip	265
Power Window Wiring Harness	265
Powerglide Shifter Rod	546
Pre-Delivery Inspection Sheet	197
Pre-Filter Screen, Oil	462
Pre-Charger, Air Cleaner	435
Pressure Gauge Tubing	80
Pressure Tester, Fuel Pump Vacuum	493
Printed Circuit Board	63
Proportioning Valve	338, 341
Proportioning Valve Brackets	341
Prying & Scraping Tools	217
Pulley Nut, Power Steering	292
Pulley System	422-426
Pulley, Crankshaft	425-426
Pulley, Power Steering	292, 426
Pulley, Smog Pump	518
Pulley, Water Pump	393
Pump Intake Screen, Oil	456
Pump, Fuel	491, 494
Pump, Intercooler Fluid	417
Pump, Oil	456
Pump, Power Steering	290
Pump, Smog	518
Pump, Water	389-390
Pump, Windshield Washer	280
Push Button Parking Brake	346
Push Rod Tool	414
Push Rod, Clutch	557
Push Rod, Engine	455
Push Rod, Fuel Pump	491
Push Rod, Manual Brake	343
Push Rod, Master Cylinder	343
Push Start Warning Decal	196

Q	
Quarter Ashtray	97
Quarter Glass	209

Quarter Panel	269-270
Quarter Panel Emblem	184
Quarter Sail Panel Fastener	58
Quarter Side Panel, Interior	36-42
Quarter Window Sash	210
Quarter Window Trim Molding	210
Quarter Window Vertical Weatherstrip	202

R

Rack and Pinion Steering System	296
Radiator	374-375
Radiator Cap	378
Radiator Fan	380-383
Radiator Fan Shroud	379
Radiator Fan Shroud Bracket	379
Radiator Hose	386
Radiator Hose Reducers	387
Radiator Mounting Bolts	287
Radiator Mounting Nut	287
Radiator Overflow Bottle	377
Radiator Overflow Hose Retainer	386
Radiator Overflow Tank	387
Radiator Petcock	376
Radiator Retainer Pad	376
Radiator Support	236
Radiator Support Bushing & Hardware	236, 376
Radiator Tag	376
Radio	82-83
Radio Antenna	90
Radio Antenna Body	91
Radio Bezel	84
Radio Color Bar	85
Radio Connector	89
Radio Delete Plate	84
Radio Knob	84-85
Radio Lens	84
Radio Module	86
Radio Mount	85
Radio Power Delay	85
Radio Receiver	86
Radio Shaft Nut	85
Radio Support Bracket	85
Radio Tone Control Knob	85
Radio, SiriusXM Tuner	86
Rag Joint	111
Rag Joint, Steering	295
Rally Stripe Set	199
Rally Wheel	354-356, 359
Rally Wheel Instruction Card	193
Ramps, Vehicle	172
Rear Arm Rest	97
Rear Armrest Ashtray	97
Rear Axle	326, 328
Rear Axle Bearing	328-329
Rear Axle Bearing Seal	328
Rear Axle Housing Kit	327
Rear Axle Lubrication ID Tag	328
Rear Axle Pinion Bumper	328
Rear Body Lamp Wiring Harness	575
Rear Brake Hose Tee Fitting	342
Rear Brake Regulator Valve	343
Rear Bumper	237
Rear Cove Molding	216
Rear Disc Brake Conversion	330
Rear Door Fixed Window Weatherstrip	204
Rear Drum Brake Spring	351
Rear End Cover	329
Rear End Main Cap Stud	329
Rear Frame Rail Floor Brace	252
Rear Panel Decal	199
Rear Panel Emblem	184-185
Rear Panel Molding	216
Rear Park Brake Cable	346

Rear Radio Speaker Cover	87
Rear Seal Adapter	459
Rear Seat Floor Hook	253
Rear Seat Floor Pan	252
Rear Speaker Enclosure Retainer	87
Rear Spoiler	186
Rear Suspension, QUADRA-Link	315
Rear Under-Seat Floor Brace	253
Rear View Mirror	50-51
Rear View Mirror Adhesive	51
Rear View Mirror Mount	51
Rear View Mirror Mounting Screw	51
Rear Window Defogger Wiring Harness	572
Rear Window Molding	210
Rear Window Molding Clip	211
Rear Window to Trunk Panel	277
Rear Window Trim Molding	57
Rebuild Kit, Brake Master Cylinder	342
Rebuild Kit, Carburetor	502
Rebuild Kit, Power Steering Pump	291, 293
Rebuild Kit, Transmission	535
Rebuild/Repair Kit, Carburetor	503
Receiver Bracket, AC	402
Receiver, Radio	86
Receiver/Dryer, AC	403
Reducer, Header Collector	512
Registration Holder	113
Regulator, Fuel Bypass	495
Regulator, Fuel Pressure	495
Regulator, Voltage	484
Regulator, Window	263
Reinforcement Ring, Shift Hole	254
Relay & Fuse, Headlamp	220
Relay Cover, Firewall	265
Relay Tester	568
Relay, Auxiliary Lamp	220
Relay, Blower Motor Cutout	398
Relay, Electric Fan	385
Relay, Electric Water Pump	391, 579
Relay, Headlamp Auto Off	92
Relay, Horn	115
Relay, Power Window	265
Relay, Transmission Control Spark	538
Release Handle, Hydraulic	556
Release Bearing, Park Brake	347
Relocation Set, Ignition Coil	419
Remote Control Battery Disconnect	578
Remote Door Mirror	266-267
Remote Door Opener	264
Remote Mirror Bracket	266-267
Remote Mirror Pivot Plate	267
Remote Starter Switch Tool	512
Repair Kit, Exhaust	283
Repair Patch	283
Repair Set, Floor Pan	283
Repair Set, Trunk	283
Repair Set, Washer Pump	280
Reservoir, Clutch Fluid	556, 558
Reservoir, Power Steering	290
Residual Pressure Valve	341
Resistor, Blower Motor	397-398
Resistor, Gauge	80
Resistor, Ignition Coil	478
Retainer Clip, Speedometer Cable	78
Retainer Clip, Throttle Rod	123
Retainer Clip, Wire Harness	581
Retainer Clips	289
Retainer Nut, Tail Lamp	228
Retainer Spring, Brake Pad	348
Retainer, Accelerator Cable	123
Retainer, Cigarette Lighter	96
Retainer, Door Jamb Windlace	46
Retainer, Door Lock Cylinder	260
Retainer, Glove Box Lock	95
Retainer, Headliner	57

Product Index

Retainer, Heater Box Wire	396
Retainer, Heater Core Tube	396
Retainer, Hood Insulation	241
Retainer, Horn Button Cap	109
Retainer, Park Brake Cable	346
Retainer, Power Steering Hose	293
Retainer, Rear Speaker Enclosure	87
Retainer, Seat Belt	35
Retainer, Shift Boot	121
Retainer, Shift Slider	120
Retainer, Shifter Plate Bulb	120
Retainer, Shoulder Harness Strap	35
Retainer, Spark Plug Wire	473
Retainer, Starter Wire Harness	481
Retainer, Steering Box Hose	293
Retainer, TCS Wire	561
Retainer, Trunk Lock	273
Retainer, Wheel Ornament	362
Retaining Pin, Brake Shoe	351
Retaining Ring, Headlamp	220-221
Retractor Cover, Seat Belt	35
Retractor, Seat Belt	34
Return Spring Extension Bracket	557
Return Spring Extension Rod	557
Return Spring, Clutch Fork	557
Return Spring, Door Mechanism	49
Return Spring, Steering Column Lock Shoe	112
Return Spring, Throttle	510
Return, Throttle Spring	509
Reveal Molding Clip	211
Reverse Lamp Switch	550
Reverse Lock Out Assembly	557
Ring & Pinion Set	329
Ring & Pinion Shim Set	328
Ring Gear, Flywheel	553
Ring, Gauge Mount Angle	81
Rivet, Grill	255
Road Draft Tube Mounting Set	436, 461
Rocker Arm Lock, Engine	455
Rocker Arm Stud, Guide	455
Rocker Arm Stud, Engine	455
Rocker Arm, Engine	455
Rocker Molding Screw	215
Rocker Panel	253
Rocker Panel Flap	253
Rocker Panel Molding	215
Rocker Panel Molding Clip	215
Rocker Reinforcement Panel	253
Rocker Stud Removal Tool	414
Rocket Racing Wheels	367
Rod Clips	288
Rod, Accelerator	122
Rod, Clutch	507
Rod, Clutch	558
Rod, Door Lock	260
Rod, Shift	546
Rod, Spare Tire Hold Down	275
Rod, Strut	303
Rod/Bracket, Shift Linkage	546
Roller Lifter, Camshaft	453
Roller, Door Window	263
Roller, Input Shaft Gear	550
Roof Drip Molding	212
Roof Panel	254
Roof Panel Brace	254
Roof Rail Weatherstrip	201
Roof Rail Mounting Screws	286
Rotor / Cap, Distributor	466, 477
Rotor, Brake	348
Rotor, Ignition	464, 466, 469, 477
Rubber Bumper, Glove Box Door	206
Rubber Bumper, Seat Back	33, 207
Rubber Stopper Set	206-207
Rubber Stopper, Clutch Pedal	126
Rubber Stopper, Seat/Hood	33, 207

Rubber Undercoating Paint	178
Rust Prevention	172, 174

S	
Safety Housing, Manual Trans	552
Safety Loop, Driveshaft	326
Sail Panel	53-55, 58
Sail Panel Fanner, Quarter	58
Sales Brochure	150
Sash, Quarter Window	210
Scoop, Hood	242, 244, 433
Scraping Tool	217
Screen, Oil Pump Intake	456
Screen, Washer Jar Fluid	279
Screw & Nut, License Plate	239
Screw Rocker Molding	215
Screw Set, Exterior	236
Screw Set, Interior	10
Screw, Blower Motor Mounting	397
Screw, Carburetor Float Bowl	506
Screw, Valve Thermostat Mounting	507
Screw, Console Shift Plate	120
Screw, Convertible Top Latch	256
Screw, Dash Vent	398
Screw, Dome Lamp	59
Screw, Glove Box	95
Screw, Headlamp Bezel	221
Screw, Headlamp Retaining Ring	221
Screw, Heater Box Resistor	397
Screw, Park Lens	225
Screw, Rear View Mirror Mounting	51
Screw, Sill Plate	9
Screw, Steering Wheel Mounting	110
Screw, Sun Visor Support	218
Screw, Wheel Opening Molding	55
Screw, Wiper Transmission Mounting	240
Screws, Sheet Metal	10
Screws, Windshield/Back Glass Molding Clip	211
Seal, AC Tube Foam	402
Seal, Air Cleaner Lid	436
Seal, Bellcrank	559
Seal, Blower Motor Firewall	397
Seal, Bumper to Body	204
Seal, Door Jamb U-Shape	203
Seal, Epoxy Putty	283
Seal, Evaporator Box	402
Seal, Evaporator Core Housing	402
Seal, Evaporator Core Pipe	402
Seal, Firewall to Cowl	204
Seal, Glass Installation	201
Seal, Heater Box	397
Seal, Hood to Cowl	204
Seal, Kick Panel	43
Seal, Oil Dipstick Tube	460
Seal, Radiator Support to Fan Shroud	379
Seal, Rear Axle Bearing	328
Seal, Shift Slider	120
Seal, Shifter Lever	121
Seal, Steering Column to Firewall	206
Seal, Steering Gear End Plug	295
Seal, Steering Shaft Coupler	112
Seal, Tailgate	205
Seal, Tailgate Glass End	205
Seal, Tailgate Top	205
Seal, Wheel Bearing	300
Seal, Windshield Wiper to Firewall	280
Seal, Wiring Harness to Firewall	206
Sealant, Threadlocker	283
Sealing Grease, Air Filter	435
Seals, Oil Pan	459
Seam Tape	12
Seat Adjuster Knob	32
Seat Back Emblem	32
Seat Back Lock Button	32

Seat Back Panel	33
Seat Back Rubber Bumper	207
Seat Back Stopper	33
Seat Belt	34
Seat Belt Bolt Cover	35
Seat Belt Bolts	35, 287
Seat Belt Buckle Cover	35
Seat Belt Emblem	35
Seat Belt Instruction Card	191
Seat Belt Operation Sun Visor Sleeve	191
Seat Belt Retainer	35
Seat Belt Retractor	34
Seat Belt Retractor Cover	35
Seat Belt Style Belts	140
Seat Bracket	31
Seat Filler Panel Stopper	33
Seat Foam	30
Seat Frame	30
Seat Frame Support	31
Seat Headrest	31
Seat Headrest Bracket, Bucket	32
Seat Headrest Cover	31
Seat Headrest Lock, Bucket	32
Seat Molding End Cap	32
Seat Molding Trim	32
Seat Mounting Adapter, Bucket	27
Seat Shelf	60-61
Seat Shelf Corner Trim	61
Seat Shelf Insulation	61
Seat Shelf Protector	61
Seat Side Panel	33
Seat Support Spring	30
Seat to Trunk Partition	61, 274
Seat Track	31
Seat Upholstery	18-25
Seat/Shoulder Belt Guide Escutcheon	35
Seats, Bucket	27-28
Security, Auto	160, 579
Sending Unit, Fuel	488
Sending Unit Screen, Fuel	488
Sending Unit, Fuel	79, 490
Sending Unit, Gear Indicator	80
Sending Unit, Oil Pressure	456
Sending Unit, Speedometer	78
Sending Unit, Temperature	119, 376, 384
Sensor Bung, Oxygen	510
Sensor, Fan Temperature	384
Sensor, Mass Air Flow	437
Sensor, Speed	79
Sensor, Temperature	119
Sensor, Throttle Position	503
Serpentine Belt Pulley	325
Service Manual	148, 149
Shackle Bushing, Leaf Spring	325
Shackle Set, Leaf Spring	324
Shaft, Control Arm	302
Shaft, Steering	112
Shaft, Trunk Lock Handle	273
Shaved Door Handle Set	264
Sheet, Factory Build	197
Shield, Bellhousing Dust	551
Shield, Headlamp	220, 222
Shield, Power Brake Tube	344
Shift Arm Mounting Stud	561
Shift Arm, Transmission	545
Shift Boot	120-121, 561
Shift Boot Plate	121, 561
Shift Button Spring	547
Shift Cable Bracket	542
Shift Detent Lever	546
Shift Hole Reinforcement Ring	254
Shift Hump	254
Shift Indicator	113
Shift Kit	535
Shift Knob	547, 562-563

Product Index

Shift Knob Adapter	562	Solenoid, TCS	538-561	Stabilizer, Door Window Guide	380, 490
Shift Knob Clip	546	Solenoid, Throttle	503	Stamp, Fuel Hose	489
Shift Lens	113, 120	Solenoid, Transmission Control Spark	538	Stamp, Inspection	162
Shift Light	81, 465	Sound Decender	9-13	Stamp, Power Steering Hose	293
Shift Linkage Rod	546	Spacer, Air Cleaner	436	Stamps, Hose	489
Shift Linkage, Auto Transmission	546	Spacer, Alternator	485	Starter	480
Shift Plate	120	Spacer, Carburetor	505	Starter Brushes	481
Shift Plate Bulb Retainer	120	Spacer, Fan	381	Starter Button	481
Shift Slider Retainer	120	Spacer, Front Coil Spring	322	Starter Heat Shield	480-481
Shift Slider Seal	120, 20	Spacer, Steering Wheel	103	Starter Motor Bracket	481
Shifter Arm	561	Spacer, Valve Cover	446	Starter Motor Power Lead Wire	574
Shifter Boot and Ring	544	Spanner Wrench	321	Starter Mounting Bolts	481
Shifter Bushing	546	Spare Tire Anchor Plate	275	Starter Mounting Hardware	481
Shifter Cover	545	Spare Tire Cover	274	Starter Shims	481
Shifter Handle	547	Spare Tire Decal	191	Starter Solenoid	481
Shifter Lever	561	Spare Tire Hold Down Rod	275	Starter Wire Harness Retainer	481
Shifter Lever Seal	121	Spare Wheel Lock Instruction Card	193	Steel Garage Art	142-143
Shifter Nut	561	Spark Plug	476	Steering / Suspension Components	306
Shifter Rod, Powerglide	546	Spark Plug Gap Tool	472	Steering Arm	299
Shifter Stabilizer Rod	561	Spark Plug Terminal Pliers	472	Steering Box Decal	196
Shifter Swivel, Console	546	Spark Plug Thread Chaser	472	Steering Box Hose Retainer	293
Shifter, Transmission	542-545, 560	Spark Plug Wire Heat Shield	472-473	Steering Column	111-112
Shim Set, Ring & Pinion	328	Spark Plug Wire Puller	472	Steering Column Adaptor	313
Shim, Body Alignment	236, 249	Spark Plug Wire Separators	472-473	Steering Column Bowl Lever Bearing	112
Shim, Motor Mounts	411	Spark Plug Wires	465, 467, 470-471	Steering Column Clamp	111
Shims, Starter	481	Speaker Pigtail	89	Steering Column Cover	112
Shock Absorber	320-321	Speaker Wire Harness	89	Steering Column Floor Mount	111
Shock Absorber Cap	321	Speaker, Grill	89	Steering Column Lever	114
Shock Absorber Mounting Hardware	320	Speakers	87-89	Steering Column Lock Shoe Return Spring	112
Shock Bolt	321	Speed Sensor	79	Steering Column Shaft Sphere	112
Shock Decal	196	Speed Warning Cable Bracket	78	Steering Column to Floor Cover	111
Shock Tower	321	Speed Warning Control Cable	78, 119	Steering Column U-Joint	111
Shock Tower Bolt	321	Speed Warning Wire Harness	574	Steering Column Wedge	112
Shock Tower Panel	321	Speedometer	64	Steering Control Valve Hose	293
Shoulder Harness Strap Retainer	35	Speedometer Cable	78	Steering Coupler Hardware	295
Shroud, Air Cleaner	436	Speedometer Cable Grommet	78	Steering Gear End Plug Seal	295
Shroud, Fan	379	Speedometer Calibrator	412	Steering Gear Mounting Bolt	295
Shroud, Steering Wheel Center	98	Speedometer Drive Converter	78	Steering Knuckle Spindle Washer	300
Side Marker Bezel	227	Speedometer Drive Gear Clip	78	Steering Nut Set	300
Side Marker Gasket	227	Speedometer Driven Gear	79	Steering Rag Joint	295-296
Side Marker Lamp	226-227	Speedometer Sending Unit	78-79	Steering Shaft	112
Side Marker Lamp Socket	227	Sphere, Steering Column Shaft	112	Steering Shaft Bearing Set	112
Side Marker Lens	226-227	Spindle Nut & Cotter Pin Set	300	Steering Shaft Coupler Seal	112
Side Panel, Interior Quarter	36-37, 40-42	Spindles	299	Steering Shaft, Rack and Pinion	296
Side Panel, Seat	33	Spinner, Wire Wheel Cover	362	Steering Stabilizer	298
Sill Plate Extension	9	Splash Apron Set, Fender Well	204	Steering System	316
Sill Plate Screw, Door	9	Splash Shield, Oil Pan	459	Steering System, Rack and Pinion	296
Sill Plate, Door	9	Spotweld Cutter	281	Steering Wheel	98-108
Skin, Quarter Panel	269-270	Spray Adhesive	10, 12	Steering Wheel Adapter	103, 106, 108, 112
Slave Cylinder, Power Steering	295	Spray Connector Tee	278	Steering Wheel Brodie Knob	144
Sleeve / Grommet, Accelerator Rod	192	Spray Gun, Paint	178-179	Steering Wheel Center Shroud	98
Sleeve Bracket, Sway Bar	304	Spray-On Acoustic Insulation	12	Steering Wheel Cover	99
Sleeve, Ignition Starting Instruction	104	Spray-On Brake Brake Plate	504	Steering Wheel Hardware	103
Sleeve, Seat Belt Operation Sun Visor	191	Spring Bracket, Accelerator	506	Steering Wheel Horn Button	98, 104, 110
Sleeve, Tie Rod Adjusting	298	Spring Compressor Tool, Valve	414	Steering Wheel Hub	103
Sleeve, Wiring Protective	472	Spring, Accelerator Pedal	122	Steering Wheel Lock	103
Sleeves, Spark Plug Wire	472	Spring, Accelerator Return	506	Steering Wheel Mounting Kit	104, 110
Smog Check Valve	518	Spring, Carburetor Return	506	Steering Wheel Nut	110
Smog Diverter Elbow	518	Spring, Coil	322	Steering Wheel Puller Tool	101
Smog Pump	518	Spring, Door Handle	259	Steering Wheel Quicker Release	103
Smog Pump Belt	388, 518	Spring, Engine Valve	455	Steering Wheel Spacer	103
Smog Pump Bracket	518	Spring, Fuel Filter	492	Stencil, Fuel Tank	489
Smog Pump Hose Tower Clamp	518	Spring, Headlamp Adjusting	221	Stencil, Muffler	489
Smog Pump Pulley	518	Spring, Hood Hinge	245	Stencil, Valve Cover	443
Smog Tube	518	Spring, Leaf	323-324	Stereo	82-83
Smog Tube Eliminator Plug	518	Spring, Lowering	323	Stereo Antenna	90
Socket & Wiring, Brake Warning Switch	343	Spring, Park Brake Guide Bar	343	Stereo Converter	84
Socket & Wiring, Headlamp	220	Spring, Rear Drum Brake	351	Stereo Connector	89
Socket & Wiring, License Lamp	232	Spring, Seat Support	330	Stereo Delete Plate	84
Socket & Wiring, Park Lamp	225	Spring, Shift Button	547	Stereo Knob	84-85
Socket Assist	514	Spring, Throttle Cable	508	Stereo Power Delay	85
Socket, License Lamp	232	Spring, Throttle Return	510	Stereo Support Bracket	85
Socket, Oxygen Sensor	517	Squirters, Accelerator Pump	503	Sticker, New Car Window	198
Solenoid Control Wire, Idle Stop	574	Stabilizer Bar	304	Stool, Counter	139
Solenoid, Starter	481	Stabilizer Rod, Shifter	561	Stop, Tail and Turn Pigtail	230

Product Index

Stopper Set, Rubber206-207
 Stopper, Glove Box95
 Stopper, Rear Seat Filler Panel33
 Stopper, Trunk Lid206
 Stopper, Vent Window203
 Storage Bag, Convertible Top Boot255
 Storage Bag, Jack275
 Storage Sleeve, Jack Wrench275
 Strap, Fender Wiring Harness247, 574
 Striker, Door Lock260
 Striker, Glove Box Latch95
 Striker/Anchor, Trunk Latch273
 Stripe Set, Rally199
 Stripe Set, SS199
 Stripes, Yenko199
 Strut Rod303
 Stud Girdle, Rocker Arm455
 Stud Set, Exhaust Manifold517
 Stud, AC Compressor Mounting402
 Stud, Carburetor Air Cleaner431, 506
 Stud, Clutch Fork557
 Stud, Distributor475
 Stud, Engine Rocker Arm455
 Stud, Fan Clutch to Water Pump381
 Stud, Power Steering Pump Mounting295
 Stud, Rear End Main Cap329
 Stud, Shift Arm Mounting561
 Stud, Transmission Lever546
 Stud, Wheel356
 Subframe306, 313-314
 Subframe Connector314, 322
 Subframe Mount Hole Repair Set307
 Subframe Mounting Plate410
 Subwoofer86
 Sun Visor Tip / Bushing Kit58
 Sun Shade160
Sun Visor53-55
 Sun Visor Bracket58
 Sun Visor Support Screw58
 Sun Visor Vanity Mirror50
Supercharger416
 Support Bracket, Radio85
 Support Spring, Seat30
 Support, Accelerator Pedal Rod123
 Support, Bucket Seat252-253
 Support, Drip Rail254
 Support, Front Frame Rail252
 Support, Hood Latch246
 Support, Radiator236
 Support, Seat Frame31
 Support, Sun Visor58
 Surge Protector484, 578
 Suspension & Chassis Manual157, 159
 Suspension System299, 308-313, 316, 323
 Sway Bar299, 313, 304
 Sway Bar Bolt304
 Sway Bar Bracket305
 Sway Bar Bushing305
 Sway Bar End Link305
 Sway Bar Sleeve Bracket304
 Switch, AC Clutch401
 Switch, AC Pressure402
 Switch, Back-Up Lamp550
 Switch, Battery Cutout569, 578
 Switch, Brake Lamp93
 Switch, Door Jamb59
Switch, Fan382, 384-385
 Switch, Fuel Pump Safety495
 Switch, Headlamp92
 Switch, Heater Fan398
 Switch, Horn Relay115
 Switch, Ignition94
 Switch, Low Pressure Hydraulic343
 Switch, Manual Transmission561
 Switch, Neutral Safety/Back-Up Lamp93, 550

Switch, Park Brake Lamp93
 Switch, Power Door Lock265
 Switch, Power Window265
 Switch, Toggle573
 Switch, Turn Signal114
 Switch, Windshield Wiper94
 Synthetic Gear Oil329

T

T-Clip, Wiring Harness581
 T-Handle Shifter547
T-Shirt129-133, 136-137
 Tab, Timing429
 Tach Adapter80
 Tachometer65
 Tachometer Adapter465
 Tachometer Gauge65
 Tachometer Harness574
 Tachometer Noise Filter80
 Tag Decal, Dealer Service190
 Tag, Anti-Freeze190
 Tag, Crankcase Vent Valve Service190
 Tag, Generator Warning190
 Tag, Headlight Instruction193
 Tag, Luggage Rack Instruction191
 Tag, Power Disc Brake Identifier193
 Tag, Radiator376
 Tag, Rear Axle Lubrication ID328
 Tail Lamp228-231
 Tail Lamp Gasket229
 Tail Lamp Housing229
 Tail Lamp Lens228-230
 Tail Lamp Panel277
 Tail Lamp Retainer Nut228
 Tailgate Glass Channel205
 Tailgate Glass End Seals205
 Tailgate Remote Control Clip273
 Tailgate Seal205
 Tailgate Vertical Window Seal205
 Tailpipe527
 Tailpipe Cutter Tool520
 Tailpipe Expander Tool520
 Tailpipe Hanger520
 Tank, Fuel486
 Tank, Oil Catch462
 Tank, Radiator Overflow377
 Tape, Wire Harness580-581
 TCS Solenoid538
 TCS Switch Wire Harness571
 TCS Wire Retainer571
 Teddy Bear136
 Tee Fitting, Rear Brake Hose345
 Tee, Distributor Vacuum476
 Tee, Spray Connector278
 Temperature Sending Unit376, 384
 Temperature Sending Unit Wiring Set384
 Temperature Sensor, Fan384
 Template, Antenna Location91
 Template, Emblem185
 Template, Molding Location216
 Tension Spring, Accelerator Pedal122
 Terminal Fins, Spark Plug472
 Terminal Protector, Battery567
 Terminal, Battery Cable567
 Thermometer, Infrared412
 Thermostat395
 Thermostat Gasket395
Thermostat Housing395
 Thermostat Housing Bolt Set395
 Thermostatic Choke Coil507
 Thread Identifier415
Threadlocker Sealant283
 Throttle Arm, Accelerator123
 Throttle Assembly122, 127

Throttle Bracket542
Throttle Cable508
Throttle Cable Bracket508
Throttle Cable Spring508
 Throttle Position Sensor503
Throttle Return Spring510
 Throttle Rod Retainer Clip123
 Throttle Rod, Accelerator123
 Throttle Solenoid503
 Throttle Spring Return Set509
Throttle Stud, Carburetor509
 Throttle Valve Cable Bracket542
 Throttle Valve Carburetor Bracket542
 Throwout Bearing, Clutch558
 Tie Rod Adjusters298
 Tie Rod Adjusting Sleeve297-298
 Tie Rod Dust Boot298
 Tie Rod End297
 Tie Rod Sleeve Bolts298
 Tie Rod Sleeves298
 Tie Strap, Wiring Harness581
 Tilt Column Steering Wheel Adapter112-113
 Tilt Column Joint111
 Tilt Steering Column111
 Tilt Wheel Release Lever113-114
 Timing Belt Conversion Set429
 Timing Chain428
 Timing Chain Cover420
 Timing Cover428
 Timing Cover Bolts429
 Timing Cover Gasket454
 Timing Gear428-429
 Timing Light412, 465
 Timing Tab429
 Tip / Bushing Kit, Sun Visor58
 Tip, Exhaust529
 Tire Cleaner167
 Tire Dressing167
 Tire Hanger170
 Tire Inflator Bracket275
 Tire Pressure Decal192
 Tire Pressure Gauge367
 Tire Storage System172
 Tires372-373
 Toggle Switch573
 Tool Box140
 Tool Set, Valve Lash Wrench414
 Tool, Air Conditioning Hose Crimper403
 Tool, Antenna91
 Tool, Battery567-569
Tool, Bearing Packer326
 Tool, Body282
 Tool, Brake Adjustment352, 556
 Tool, Brake Bleeder352
 Tool, Brake Cable Pliers353
 Tool, Brake Cylinder Hone352
 Tool, Brake Pad Spreader352-353
 Tool, Brake Proportioning Valve Bleed341
 Tool, Brake Spring352
 Tool, Brake Spring Pliers352
 Tool, Brake Tube Bending353
 Tool, Bushing Installation/Removal303
 Tool, Carburetor Float Adjustment506
 Tool, Clutch558
 Tool, Compression Tester413
 Tool, Crimp465
 Tool, Degree Wheel414
 Tool, Dial Indicator414
 Tool, Distributor475
 Tool, Door Panel49
 Tool, Electrical573
 Tool, Engine454
 Tool, Engine Rotation Adapter414
Tool, Flaring353
 Tool, Fuel Tank Sending Unit Lock Ring490

Product Index

Vent Pull Knob	399	Welding Manual	157	Wire Connector Terminals	581
Vent Tube, Crankcase	436	Well Liner, Convertible	255	Wire Grommet	581
Vent Window Frame	209	Wheel Bearing	300	Wire Gutter	574
Vent Window Handle	48-49	Wheel Bearing Grease	300	Wire Harness	570-577
Vent Window Stopper	203	Wheel Bearing Grease Cap	300	Wire Harness Retainer Clip	288, 581
Vent Window Weatherstrip	203	Wheel Bearing Seal	300	Wire Harness Tape	580
Vent, AC Air Distributor Duct	399	Wheel Cap Emblem	361-362	Wire Harness, Back-Up Lamp	573
Vent, Defroster	398	Wheel Center Cap 356-359, 361-364, 367, 369-370		Wire Harness, Console	573
Vibration Bushing, Ignition	465	Wheel Chocks	172	Wire Harness, Dome Lamp	59, 574
Vinyl Floor Cover	8	Wheel Cylinder Rebuild Kit	351	Wire Harness, Fuel Tank Sender	490, 574
Vinyl Top	257	Wheel Cylinder, Drum Brake	351	Wire Harness, Gauge	119
Vinyl Top Molding	212, 257	Wheel Hanger	170	Wire Harness, Hood Lamp	273, 570
VIR Eliminator Assembly	403	Wheel Inset Bezel	362	Wire Harness, Neutral Safety Switch	573
Visor Bracket, Sun	58	Wheel Locks	358	Wire Harness, Speaker	89
Visor, Sun	53-55	Wheel Lug Nut	361	Wire Harness, TCS Switch	571
Visor, Tip / Bushing Kit	58	Wheel Opening Molding	215	Wire Harness, Transmission	571
Voltage Regulator	484	Wheel Opening Molding Screw	215	Wire Harness, Trunk Lamp	273, 570
Voltage Regulator Bolts	287	Wheel Ornament	362	Wire Harness, Wiper	574
Voltage Regulator Ground Wire	484	Wheel Ornament Decal	362	Wire Looms, Spark Plug	446, 472, 580
Voltage Regulator Nut	287	Wheel Ornament Retainer	362	Wire Port, Firewall	581
W		Wheel Paint Mask Set	362	Wire Retainer, Spark Plug	473
Wagon Cargo Area Carpet	8	Wheel Stud	356	Wire Separators, Spark Plug	472-473
Warning Module, Low Fuel	79, 119	Wheel Trim Ring	358-359, 361-362	Wire Set, Spark Plug	465, 467, 471
Warranty Certificate	195, 198	Wheel Wax	167	Wire Sleeves	580
Wash Stick	169	Wheel Well Opening, Extended	271	Wire Wheel Cover Spinner	362
Washer Bottle / Jar, Windshield	279	Wheel Well, Inner Fender	271	Wire, Accessory	580
Washer Bottle Decal	191, 279	Wheel, Steering	98-108	Wire, Ignition Coil	465
Washer Hose Tie Straps	278	Wheelhouse Assembly	271	Wiring Conduit	574
Washer Jar Fluid Screen	279	Wheelhouse Panel	270-271	Wiring Crimping Tool	574
Washer Pump Repair Set	280	Wheels	354-356, 359-360, 364-371	Wiring Diagram	150
Washer, Countershaft Gear Bearing	551	Windage Tray	456, 458-459	Wiring Hardware	479
Washer, Distributor	475	Windlace Clip, Door Jamb	46	Wiring Harness Clips	288
Washer, Door Glass	263	Windlace End Cap	46	Wiring Harness T-Clip	581
Washer, Door Lock Striker	260	Windlace, Door Jamb	46	Wiring Harness Tape	581
Washer, Door Striker Bolt	260	Window Bumper	263	Wiring Harness Tie Strap	581
Washer, Harmonic Balancer	426	Window Channel Liner	207	Wiring Harness, Clock	574
Washer, Pitman Arm	295	Window Crank Handle, Inner	48-49	Wiring Harness, Dash Panel	80
Washer, Steering Knuckle Spindle	300	Window Decal	193	Wiring Harness, Dash to Back-Up Switch	573
Washer/Bolt, Leaf Spring	325	Window Felt Clips	286	Wiring Harness, Electric Fan	382, 384
Water Outlet	394	Window Frame Molding, Door	210	Wiring Harness, Engine	575
Water Outlet Bolt	394-395	Window Guide	263	Wiring Harness, Front Lamp	570
Water Outlet Restrictors	395	Window Handle Clip	288	Wiring Harness, Headlamp	220, 570
Water Pump	389-391	Window Handle Washer Plate	49	Wiring Harness, HEI	469
Water Pump Bolts	392	Window Handle, Door	49	Wiring Harness, Kickdown	571
Water Pump Bypass Hose Set	390	Window Harness Boot, Power	265	Wiring Harness, Rear Body Lamp	572-573
Water Pump Drive Set	391	Window Regulator	263	Wiring Harness, Rear Window Defogger	572
Water Pump Gasket	390	Window Regulator Cam Spacer	263	Wiring Harness, Underdash	572
Water Pump Hose Outlet Fitting	392	Window Relay, Power	265	Wiring Insulation	384
Water Pump Pulley	393	Windshield Glass Support	209	Wiring Manual	156
Water Pump Rebuild Set	391	Windshield Molding	57, 210	Wiring Protective Sleeve	472
Water Pump Spacers	390	Windshield Molding Clip Pliers	217	Wiring Retainer, Brass Tie	581
Wax/Polish	163	Windshield Molding Clips	217	Wiring Set, Temperature Sending Unit	384
Weatherstrip	200-205	Windshield Molding Tool	217	Wood Wheel Horn Cap Mount/Contacts	110, 114
Weatherstrip Adhesive	207, 217	Windshield Removal Tool	217	Worm Bearing Adjuster	295
Weatherstrip Clips	288-289	Windshield Washer Hose	278	Wrench, AN Hex	413
Weatherstrip Hook Tool	217	Windshield Washer Jar	279	Wrench, Lug / Jack	275
Weatherstrip Lubricant	207	Windshield Washer Jar Bracket	279	Wrench, Oil Filter	463
Weatherstrip Plug	204	Windshield Washer Jar Cap	279	Wrench, Oxygen Sensor	517
Weatherstrip, Back Glass	201	Windshield Washer Nozzle	278		
Weatherstrip, Door Frame	201	Windshield Washer Pump	279-280	X	
Weatherstrip, Door Glass	203	Windshield Weatherstrip	201	X-Pipe Crossover	519
Weatherstrip, Hatchback Window Vertical	204	Windshield Wiper Arm Remover Tool	278	X-Pipe, Exhaust	519
Weatherstrip, Quarter Window Vertical	202	Windshield Wiper Blade	278		
Weatherstrip, Rear Door Fixed Window	204	Windshield Wiper Bullet Caps	278	Y	
Weatherstrip, Roof Rail	201	Windshield Wiper Motor	280	Y-Pipe, Exhaust	519
Weatherstrip, Trunk	204	Windshield Wiper Switch	94	Yenko Decals	188, 197
Weatherstrip, Vent Frame	203	Windshield Wiper Switch Knob	94	Yenko License Plate	137
Weatherstrip, Vent Window	203	Windshield Wiper Transmission	280	Yenko Stripes	199
Weatherstrip, Window Channel	202	Windshield Back Glass Molding Clip Screws	217		
Weatherstrip, Windshield	201	Wing Nut, Air Cleaner	436	Z	
Wedge, Door Alignment	259	Wiper Module	94	Zerk Fittings	298
Wedge, Pinion	324	Wiper Motor Ground Strap	280	Zinc Anode, Cooling System	384
Wedge, Steering Column	112	Wiper Motor Link	280		
		Wiper Motor Mounting Screw	574		
		Wiper Wire Harness	280		

New Product Showcase

New!



color options for multi-color halos

multi-color halo kit shown



without halo ring

with turn signals

Black Illusion

Round Headlamps with LED Halo

RedLine LumTriX headlamps allow 50% more light to shine through thanks to their crystal clear lenses and a special side lens that extends past the retaining ring. This side lens is a true safety innovation and was designed to provide additional side light and increase visibility. Each headlamp features a Euro style diamond cut reflective base, diamond crystal glass, and a heat resistant composite housing. Even though no paint or tint is applied to the glass or reflector, the Black Illusion headlamps look blacked out when off thanks to the halo and lamp shields that are painted black. Headlamps are available with or without a halo, either single color halo (white) or multi-color halo (with 16 selectable colors plus the ability to adjust brightness), with or without turn signals and your choice of clear or blue H4 halogen bulbs or H4 LED bulbs. The halo or "Angel Eyes" can also be wired as a daytime running lamp and features 23 low tech LEDs with a 100,000+ hour life, along with "fade," "flash," "strobe," and "smooth" modes that you can choose with the included wireless remote. Headlamps plug directly into your stock harness for a simple and easy installation. Each pair includes: 2 headlights, 2 bulbs, dust boots, ceramic tip pigtail harness adapter, and instructions. Multi-color halo sets also include the RGB harness and wireless remote.

Important: Will fit most vehicles (cars, trucks, motorcycles and motor homes) made from 1936 to 1979, as well as many vehicles made after 1979 that use a universal round style headlight.

Note: Blue Halogen bulbs are blue in color when off, and bright white when on (no blue tint). Clear Halogen bulbs are clear in color when off and bright white when on. LED bulbs include colored film to change the look and temperature color of your lights.

7" Round White Diamond Headlamps

Without Halo Ring		
H4100101	7"	with blue H4 Halogen bulbs..... 89.99 pr
H4100102	7"	with H4 NovaStar LED bulbs..... 249.99 pr
With Single Color (White) Halo Ring		
H4103201	7"	with blue H4 Halogen bulbs..... 194.99 pr
H4103202	7"	with H4 NovaStar LED bulbs..... 334.99 pr
With Single Color (White) Halo Ring and Turn Signals		
H4103204	7"	with blue H4 Halogen bulbs..... 244.99 pr
With Multi-Color Halo Ring		
H4103001	7"	with blue H4 Halogen bulbs..... 249.99 pr
H4103002	7"	with H4 NovaStar LED bulbs..... 389.99 pr
With Multi-Color Halo Ring and Turn Signals		
H4103004	7"	with blue H4 Halogen bulbs..... 299.99 pr
Black Illusion White Diamond Headlamps w/Single Color (White) Halo Ring		
H4103203	7"	with clear H4 Halogen bulbs..... 244.99 pr
Black Illusion White Diamond Headlamps w/Multi-Color Halo Ring		
H4103003	7"	with clear H4 Halogen bulbs..... 299.99 pr



MOD Drift

MOD .07

MOD .08



black suede finish
M36020



black suede finish
M36022



smooth black leather finish
M36023

Track Steering Wheels

MOMO track steering wheels have a reputation for performance, craftsmanship, and safety, earned over 50 years of competition at the highest levels of racing. Their ergonomic construction features a Italian made suede anatomic grips with hand sewn seams, surrounding aircraft aluminum hubs. There are models available with or without yellow centering stripe and everything is topped off with the legendary yellow MOMO nameplate. Installs with standard 6 bolt adapters.

Part#	Model	Diameter/Dish	Grip	Hub	Price
M36020	MOD Drift	330mm/88mm	suede	gray	248.99 ea
M36022	MOD .07	350mm/72mm	suede	black	248.99 ea
M36021	MOD .07	350mm/72mm	leather	black	248.99 ea
M36024	MOD .08	350mm/72mm	suede	black	248.99 ea
M36023	MOD .08	350mm/72mm	leather	black	248.99 ea

New!



A700223 - installed



A700225

LS Engine Cover Kit

Take your engine bay to the next level with this customizable LS engine cover kit. Made in the USA from special temperature resistant automotive polycarbonate and features 6061 aluminum inserts. This kit is compatible with any automotive paint or hydro dipping for endless customizing options. The LS engine cover kit is engineered to fit LS1, LS2, and LS3 passenger car intakes and coil packs only. Kit includes: valve covers, intake cover, cover inserts, ARP mounting hardware, billet oil filler, and aluminum stand-offs.

Note: Some trimming may be required. Must install aftermarket fuel rail HC2123.

A700221	LS1	899.99 kit
A700222	LS2	949.99 kit
A700223	LS3	949.99 kit
A700224	LS1 with oval inserts	899.99 kit
A700225	LS2/LS3 with oval inserts	949.99 kit



WARNING: Cancer and Reproductive Harm.
www.P65Warnings.ca.gov

CHANGE SERVICE REQUESTED

CALL TOLL-FREE OR ORDER ONLINE TODAY **1-800-854-1280** / **classicindustries.com**



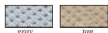
Pickup Layers of Dust with One Sweep!

An easy way of keeping your vehicle clean and free of dust, looking like it was just washed. It's specially treated cotton fibers lift dust off the surface without scratching the paint, even delicate lacquers. The more you use it, the better it works! Regular use maintains your vehicle's appearance while significantly reducing frequency of washings.

62441	large duster.....	19.99 ea
62443	mini duster.....	10.99 ea
62444	buy both dusters and save!.....	25.99 set

FREE
Look Kit and Storage Bag
with every purchase
A \$30.00 Value!

OEI AUTHORIZED



WeatherBlocker™ Plus
Our exclusive soft cotton lining provides added protection against dings and scratches.

★ **Outdoor Use** ⚠️
★ **Four Layers of Protection** ⚠️

Designed for outdoor use, OER's® WeatherBlocker Plus covers are manufactured using a durable 4 layer non-woven material that provides a high level of protection from the elements and features a soft cotton backing which helps protect against scratches and dings. Each cover is sewn with double stitched seams to add strength and durability to the cover and Neoprene elastic is sewn into the front and rear hems to help secure the cover. Breathable and lightweight, WeatherBlocker Plus covers offer excellent water resistance and protection from the sun's UV rays. Covers feature mirror pockets on both sides of the cover when applicable and non-scratch grommets have been installed onto each side of the cover to allow the use of a tie strap or lock. Specify gray or tan.

MT2760G	1962-67	coupe and sedan models.....	149.99 ea
MT2763G	1968-79	coupe and sedan models.....	149.99 ea

1962-79 Aluminum Radiators

Improve the cooling capacity of your engine with Cold-Case performance radiators for 1962-79 Nova models.

Feature an all aluminum construction that is good at dissipating heat and saving energy, with 2 oversized cooling rows, and polished stamped tanks. All Cold-Case radiators are 100% TIG welded, pressure tested, and includes OE style fittings for both automatic and manual applications. All radiators manufactured by Cold Case are guaranteed to be free from material and workmanship defects for the life of your installation. Does not include the cap, sold separately.



CC46130	1962-67	MT.....	359.99 ea
CC46131	1962-67	AT.....	369.99 ea
CC46132	1968-79	small block MT.....	359.99 ea
CC46133	1968-79	small block AT.....	369.99 ea
CC46134	1968-79	big block MT.....	369.99 ea
CC46135	1968-79	big block AT.....	359.99 ea
CC46116	1962-79	Cold-Case radiator cap.....	24.99 ea

The Glen Wheel

This aluminum The Glen wheel puts you back in the day of the Trans Am era, Pony car racing! These wheels are currently used in the Australian Trans Am Series and have shown not only their beauty but their strength and durability.



These are a high-quality gravity cast aluminum and processed to the T6 specification. The wheel is over 1 pound lighter than the original The Glen wheel and 15% stronger in the spokes and core than the original. It is powder coated. The Glen gray with a clear powder coated finish. Wheel has a diamond finished outside edge. Includes cap. Lug nuts are sold separately. ⚠️

Item #	Size	Bolt Pattern	Offset	Bkup	Price
TAR157240	15" x 7"	5 x 4-3/4"	0 mm	4"	214.99 ea
TAR158245	15" x 8"	5 x 4-3/4"	0 mm	4-1/2"	264.99 ea

Lug Nuts		
WK555	7/16"-20 x 1.88" bulged with 3/4" head	set of 5..... 9.99 set
WK55	7/16"-20 x 1.88" bulged with 3/4" head	set of 20..... 39.99 set
WK56	1/2"-20 x 1.88" bulged with 3/4" head	set of 20..... 39.99 set