

Cool Ways To Protect Your Truck!



Fender Gripper Fender Cover

Manufactured using a cushion soft, non-slip material, Fender Gripper fender covers will not slide off or move around when in use. They are impervious to motor oil, coolant, brake fluid and will not harm the paint and are easily hand washable. Stylish protection for your classic Chevrolet or GMC truck. Dimensions 22" x 34".

FG2021	TRUCK	25.99 ea
FG2041	GMC	25.99 ea
14492	Chevrolet Bow Tie w/blue fill	25.99 ea
FG2007	Genuine Chevrolet	25.99 ea
FG2007	Chevrolet Racing	25.99 ea
FG2005	Heartbeat of America	25.99 ea
FG2042	General Motors	25.99 ea
FG2307	The Money Pit	25.99 ea
FG2302	blue/silver flames	25.99 ea



UV100 CUSTOM SUNSCREEN



UV100 Custom Sunscreen

Covercraft UV100 Sunscreens are made to fit your exact windshield specific to the Year/Make/Model of your vehicle. With a perfect fit to your windshield, you get maximum interior protection from harmful UV rays and damaging heat. These sunscreens use a thick foam core with a triple laminate construction and a soft felt backing. Their unique design allows them to be easily folded up when not in use perfect for compact storage.

Note: LDWS = Lane Departure Warning System. Please add 2 digit color code when ordering.

Chevrolet/GMC Truck		
UV10557	1955	89.99 ea
UV10594	1995-98	89.99 ea
Silverado/Sierra Truck		
UV10705	1999-06	89.99 ea
UV10966	2007-13	89.99 ea
UV11310	2014-19	with LDWS 89.99 ea
UV11312	2014-19	without LDWS 89.99 ea



EC - chrome camo GS - galaxy silver WH - white

UVS100 Premier Custom Sunscreen

Covercraft UVS100 Premier Series Sunscreens are made to fit your exact windshield specific to the Year/Make/Model of your vehicle. With a perfect fit to your windshield, you get maximum interior protection from harmful UV rays and damaging heat. These sunscreens use a thick foam core with a triple laminate construction and a soft felt backing. Their unique design allows them to be easily folded up when not in use perfect for compact storage. These custom sun shades also have an elegant black backing, 3 new unique outer layer reflective stylized options.

Note: LDWS = Lane Departure Warning System. Please add 2 digit color code when ordering.

Chevrolet/GMC Truck		
UV10557	1955	99.99 ea
UV10594	1995-98	99.99 ea
Silverado/Sierra Truck		
UV10705	1999-06	99.99 ea
UV10966	2007-13	99.99 ea
UV11310	2014-19	with LDWS 99.99 ea
UV11312	2014-19	without LDWS 99.99 ea



UV100 Carhartt Custom Sunscreen

Covercraft Carhartt UVS100 Sunscreens are made to fit your exact windshield specific to the Year/Make/Model of your vehicle. With a perfect fit to your windshield, you get maximum interior protection from harmful UV rays and damaging heat. These sunscreens use a thick foam core with a triple laminate construction and a soft felt backing. Features: custom Patterned for a Perfect Fit, Foam core center acts as an insulator, and Helps reflect damaging UV. Available in brown.

Note: LDWS = Lane Departure Warning System.

Chevrolet/GMC Truck		
UV10090BN	1953-54	109.99 ea
UV10557BN	1955	109.99 ea
UV10087BN	1967-72	109.99 ea
UV10068BN	1975-86	109.99 ea
UV10088BN	1988-94	109.99 ea
UV10594BN	1995-98	109.99 ea
Silverado/Sierra Truck		
UV10705BN	1999-06	109.99 ea
UV10966BN	2007-13	109.99 ea
UV11310BN	2014-19	with LDWS 109.99 ea
UV11312BN	2014-19	w/o LDWS 109.99 ea

LED False Alarm

Deter auto theft with a "flashing red LED" that gives the appearance of a sophisticated alarm system at a fraction of the cost. In minutes the battery operated Guardian 3000 can be installed anywhere on the dashboard. G3000 false alarm 19.99 ea

Starter-Stop Anti-Theft Device

The Starter-Stop is a low cost theft protection device that disables the vehicles ignition. This works with virtually all 12V vehicles. Simply wire it into any on/off switch in your vehicle and that will become your personal kill switch. If automatically arms when the ignition is turned off. There are no batteries to wear out, no annoying sirens and no transmitters to lose. 14070 theft protection 21.99 ea

Protection from Moisture During Storage

Sta-Dri pouches significantly reduce humidity and moisture inside of your vehicle safely and conveniently. Pouches can be regenerated up to 3 times. Use 1-2 pouches per vehicle. Depending on humidity level, one pouch can last up to a year of continuous storage, though it is recommended that you check every month and regenerate as necessary. Non-toxic and non-corrosive, remains dry to the touch even when fully saturated.

BF1001	2 lb pouch.....	16.99 ea
BF1002	two 2 lb pouches.....	32.99 pr
BF1003	four 2 lb pouches.....	64.99 set



Grit Guard Wash System

This unique wash bucket provides a convenient way to store or transport all of your car cleaning supplies while doubling as an extremely effective finish protecting wash tool. The Grit Guard insert sits in the bottom of the pail to extract particles and contaminants from mitts and brushes. Gravity causes sand and dirt to settle below the guard so the wash water stays clean and scratch free.

Basic Wash System

The basic wash system includes a black pail with a yellow sealing lid and a Grit Guard insert.

K89740	3.5 gallon.....	28.99 ea
K89741	5 gallon.....	32.99 ea

Grit Guard Deluxe Wash Bracket Sets

This superb washing system features a Grit Guard insert, a heavy-duty bucket, a seat cushion and a dolly that turns the washing system into a rolling stool, so you can sit down and detail your vehicle comfortably. Supports up to 250 pounds.

Deluxe Washing System		
K89743	3 gal., yellow pail w/black top.....	67.99 set
Individual Components		
K89744	Grit Guard insert.....	9.99 ea
K89745	5 crater dolly.....	36.99 ea

Accessories for the Ultimate Garage!



A9100272

A9100273

Portable Fire Extinguisher



Amerex portable fire extinguishers have been the industry standard for more than 50 years. ABC Dry Chemical is rated to extinguish: (A) paper, wood, and textiles, (B) flammable liquids and, (C) energized electrical hazards. Purple-K dry agent is superior for flammable liquid fires over ABC units. Halotron "clean agent" units are also effective for Class B and C fires but leaves no residue after discharge.

Dry Chemical Fire Extinguishers

Multi-Purpose ABC

G149179	2.5 lb	red	59.99 ea
A9100273	2.5 lb	chrome	189.99 ea

Purple K

A9100272	1 lb	red	129.99 ea
A9100293	1 lb	chrome	189.99 ea
A9100294	2.5 lb	red	169.99 ea
A9100295	2.5 lb	chrome	229.99 ea

Clean Agent Fire Extinguishers

Halotron I

A9100296	1.4 lb	red	169.99 ea
A9100297	1.4 lb	chrome	249.99 ea
A9100298	2.5 lb	red	239.99 ea
A9100299	2.5 lb	chrome	299.99 ea

HIR Performance



Performance Fire Extinguisher



HalGuard and MaxOut fire extinguishers are effective on flammable liquid fires and do not conduct electricity. HalGuard "clean agent" extinguishers do not leave a messy residue. MaxOut is a reliable line of dry chemical extinguishers. The high-quality steel cylinders include rechargeable all metal valves and are available in a variety of sizes and colors. Flat mount, aviation quality mounting bracket included.

MaxOut Dry Chemical

H31002B	1 lb	black	169.99 ea
H31002C	1 lb	chrome	239.99 ea
H31002R	1 lb	red	139.99 ea
H32502B	2.5 lb	black	164.99 ea
H32502C	2.5 lb	chrome	264.99 ea
H32502R	2.5 lb	red	144.99 ea

Halguard Clean Agent

H31001B	1.4 lb	black	293.32 ea
H31001C	1.4 lb	chrome	329.99 ea
H31001R	1.4 lb	red	254.99 ea
H32501B	2.5 lb	black	399.99 ea
H32501C	2.5 lb	chrome	489.99 ea
H32501R	2.5 lb	red	384.99 ea



Chevrolet Bow Tie Garage Utility Mat



This heavy-duty utility mat can be used in a variety of ways around the garage. Each rugged rubber mat will look great on the workbench or the floor. Mat measures 17" x 14" for maximum coverage.

15768 Chevrolet with gold Bow Tie... 20.99 ea



Park Smart Wall Guard



The Park Smart wall guard attaches to your garage wall, providing cushioned protection for both your car door and your wall. Includes all the hardware needed to attach it to drywall, studs, brick or even concrete. Pre-drilled holes are included 16" and 24" apart, making it easy to fasten to a stud wall. Designed and engineered in the USA. Measures: 25" x 6-1/2".

ACP102 wall guard... 11.99 ea



Park Perfectly Every Time



The Park Smart Mat helps guide you into your garage space letting you know exactly when to stop. Perfect for getting your classic or collectible car into the correct position in a crowded garage. As you feel yourself driving over the first bump, the second bump tells you that you have driven far enough forward. Measures: 27-1/2" x 12" x 1-1/2". Includes a manufacturer's limited lifetime warranty. Buy one for each of your vehicles.

ACP101 Park Smart Mat... 21.99 ea

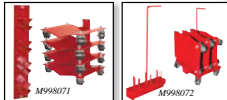
Wheel Cribs

Wheel Cribs are a safe, lightweight alternative to jack stands. They cradle the tire 10" off the ground, providing unobstructed access underneath the vehicle. Each crib

supports 1500 pounds (3000 pounds per set) and weighs only 5 pounds. Wheel Cribs also can be used for vehicle display.

Note: For increased safety, use Wheel Cribs with all Race Ramp products.

RR108 15" x 10" x 12"..... 179.99 pr



MF998071

MF998072

Wall Mount

Rolling Rack

shown with dollies stored - not included

Auto Dollies

Move your project around the garage with ease! The Auto Dollies are manufactured from 1/4" steel plate, featuring zinc-plated ball bearing casters and 1-3/4" wide rollers. Each standard dolly supports up to 1500 pounds, and for larger vehicles, the heavy-duty model supports up to 2500 pounds. Auto Dollies measure 16" long and are available in 8", 12", and 16" widths. Sold in pairs.

Standard

AS200100	8" x 16"	136.99 pr
AS200101	12" x 16"	129.99 pr
AS200102	16" x 16"	130.99 pr

Heavy-Duty

AS200103	8" x 16"	110.99 pr
AS200104	12" x 16"	117.99 pr
AS200105	16" x 16"	123.99 pr

Accessories

MF998071	dolly dock	74.99 ea
MF998072	dolly rolling rack	92.99 ea



Wall Mounted Wheel/Tire Hanger



Free up space by getting wheels and tires off the floor! Each heavy-duty powder coated hanger is approx. 21" long and mounts at a slight angle so wheels won't slide off.

Note: Each hanger will hold 2 wheels with tires mounted.

MF998070 wheel/tire hanger... 44.99 ea



Protect Your Wheels from Harmful Over Spray

The RIM PRO™ wheel protector is foldable and includes a handy pouch lending itself to easy storage and accessibility in your vehicle or out. The perfect product to help shield your wheels from tire shine over spray, allowing your wheels to stay clean and free of damage from harsh chemicals. This device will help you to save time by virtually eliminating the need to wipe the wheels after applying tire shine products to your tires. Hand washable. Available in 13", 14", 16", 18", and 20" sizes.

RM1001 specify size..... 9.99 ea

Professional Products For The Truck Enthusiast!

New!



Fantastic Finish Carnauba Pre-Softened Wax

For the enthusiast who demands the highest and wettest level of shine, our PDP PW1 Fantastic Finish Pre-Softened Carnauba Paste Wax is a premium blend of genuine carnauba wax and natural oils that makes paint "drip off of your vehicle" with a high gloss shine and shimmer that insure to impress even the toughest of critics. PW1 Fantastic Finish Pre-Softened Carnauba Paste Wax is in a class all its own: Pre-softened paste wax with no cleaners, it leaves a deep, brilliant long-lasting shine. Protects and beads up with a glass like gloss that lasts up to 6 months. Works beautifully on all colors, even on blacks, reds, and burgundies, filling in swirl marks. Super easy on and off: just wipe-up in a circular motion, and take off with a microfibre towel immediately. No need to wait for it to dry. Leaves no white haze at all - there is no white residue to clean out of the cracks, and no need to be careful around the exterior trim- it won't leave white marks.

K89623 20 oz. can 39.99 kit

Super Suds High Foaming Car Wash

This super suds thick, high foaming shampoo is formulated for extra duty cleaning. Chelating agents counteract hard water mineral deposits while foam stabilizers provide longer lasting sudsing action than regular duty shampoos. Its pH balanced to gently clean surface, but not remove existing wax or polymer coatings. Concentrated 100:1 for economy. Biodegradable, phosphate-free, NPE-free, VOC compliant.

K89512 grape 1 gallon 19.99 ea
K89513 cherry 1 gallon 19.99 ea



Reflect-It Correction Creme and Swirl Eliminator Polish

This light cut correction creme restores depth of gloss and color while leaving a surface free of swirls or compound haze on all types of paint finishes. Formulated using an advanced blend of diminishing, micro synthetic silica abrasives, Reflect-It™ quickly removes 2000 - 3000 grit sand scratches, cobweb scratches, swirl marks, water spots, and other paint imperfections. Swirl eliminator is a ultra gloss polish uses extremely fine polishing agents to eliminate swirl marks and hairline scratches while preparing a blemish free surface for final finishing. Provides longer buffing time to create an exceptionally high gloss, glass-like appearance. Safe for all types of paint finishes. For hand or machine use. Contains no wax.

Reflect-It Correction Creme - Final Step - Light Cut
K89517 16 oz. 14.99 ea

P21 Swirl Eliminator
K89533 16 oz. 11.99 ea



PL23 "EcoGlo" Waterless Wash and Wax

EcoGlo is a waterless wash and wax that will easily clean, shine, and protect your vehicle in one step - without water! No wash your vehicle anywhere, anytime, without use of water (no hose, bucket, mitt, water bucket). Great for washing in severe cold conditions, areas with water bans or restrictions and just to conserve water! Available in a 32 oz. (one quart) spray bottle or 1 gallon jug.

K89508 32 oz. bottle 24.99 ea
K89508 1 gallon 54.99 ea



Cherry Liquid Finishing Wax

PRO Cherry Finishing Wax Liquid Carnauba Cream utilizes new technology in its special blend of polymers, resins and natural Carnauba. Polishes and protects in one operation. Gently removes fine scratches, buffer marks and light oxidation. Available in your choice of 16 oz. bottle or buy the professional sized gallon jug and save!

K89624 16 oz. bottle 11.99 ea
K89625 1 gallon 44.99 ea



Butter Wet Wax Creme Liquid Carnauba

PRO Butter Wet Wax Creme Liquid Carnauba will leave your car shining like it's still wet! Shines and polishes with no cleaners or abrasives. Will not stain plastic or rubber. Easy application either in the sun or shade. Offers long-lasting protection. It also brings out the deep shine and luster of all colors.

Available in your choice of 16 oz. bottle or buy the professional sized gallon jug and save!
K89603 16 oz. bottle 9.99 ea
K89604 1 gallon 39.99 ea



Black Beauty Paint Sealer and Wax

One-step color brightener and sealer, specially formulated for black and other dark color paints. Quickly and effectively removes fine swirl marks and cobweb scratches, while leaving a darker, more reflective finish. Contains amino functional silicones and Carnauba Wax for long term, high gloss protection. Safe for all types of paint finishes. For hand or machine use. VOC COMPLIANT.

K89535 16 oz. bottle 12.99 ea
K89536 1 gallon 46.99 ea



OER® "Secret Formula" Clay Bar System

Clay pulls out all the contaminants you cannot see, but that you can definitely feel, like industrial fallout, rust dust, and brake dust. These contaminants may cause patches of paint to appear dull, even after waxing. As these contaminants oxidize, they create rust spots within the paint. Clay bar will remove these contaminants and leave the surface silky smooth with a mirrorlike smooth finish. Our clay will not break or deteriorate into small particles like inferior low quality clay bars. Acts as a magnet for foreign particles, literally pulling the paint fouling grime away from the surface of the paint. Clay lubricant is essential to the performance and safety of clay. It provides the necessary slick surface for clay to glide on.

200 Grams - Package of 4-50 Gram Bars per Package
K89446 green block light oxidation 14.99 ea
K89447 gray block moderate oxidation 14.99 ea
K89448 red block heavy oxidation 14.99 ea
200 Grams - 200 Gram Bar with Plastic Case
K89477 blue block moderate oxidation 14.99 ea
K89478 purple block heavy oxidation 14.99 ea



QUICKSPIFF Spray Wax/Clay Bar Lubricant

QUICKSPIFF is a high lubricity spray wax designed to easily remove dust, smudges, fingerprints, and dirt from any exterior surface of a vehicle. It cleans and polishes paint, glass, chrome, plastic, and rubber in one quick step. Just spray and wipe! You will be impressed with the total ease of use, and the slick shiny gloss it leaves on the paint and glass without any streaks or smears! It can be used as a quick spray wax or a clay bar lubricant. Available in a 32 oz. bottle or 1 gallon jug.

K89505 32 oz. bottle 13.99 ea
K89506 1 gallon 19.99 ea

P35Q Sealer Wax - Satin Creme

This connoisseur quality final finish sealer wax combines the long-lasting protection of an acrylic polymer resin with the high clarity and gloss qualities of Brazilian Carnauba wax. Formulated for easy application and removal on all types of pre-cleaned paint finishes. Apply by hand or machine. Available in 32 oz. size. VOC COMPLIANT.

K89526 32 oz. bottle 25.99 ea



Professional Products For The Truck Enthusiast!

Vinyl Kit



K89456

Canvas Kit



K89457

Soft Top and Tonneau Cover Care Kits

Top Secret kits are a complete system for the care of vinyl and canvas tops and tonneau covers. Both kits include: cleaner, vinyl or canvas protectant, microfiber towels, applicators, and a brush with 18" handle.

Vinyl Cleaner and Protectant Kit

Our exclusive Secret Formula Top and Tonneau Protectant Kit is a complete system for the care of vinyl tops and tonneau covers. In the first step, the P99 HD Cleaner targets soil and dirt from, bird droppings, tree leaves, light stains from organic material and other debris to effortlessly remove them from the vinyl material. Next, the Secret Formula TNT Gel works as a sealer to repel water and detergents and help keep tops hydrated and supple as well as looking brand spanking new. Kit includes: Vinyl Cleaner P99 HD 32 oz. bottle, vinyl VRT Dressing 32 oz. bottle, applicator pads, gentle wash brush with 18" handle, elite microfiber towel, blue monster microfiber towel.

Vinyl Top and Tonneau Cover Formula

K89456 cleaner, protectant & applicator 39.99 kit

Canvas Cleaner and Protectant Kit

Top Secret top and tonneau is a complete system for the care of canvas soft tops and tonneau covers. In the first step, our incredible secret formula cleaner targets soil and dirt from, bird droppings, tree leaves, light stains from organic material and other debris to effortlessly remove them from the canvas material. Next, the Canvas Protectant seals the canvas, shielding your top or tonneau cover from grease, air, salt, tree sap, and other debris. The amazing Canvas Protectant is an easy to use formula that seals the canvas material from moisture, causing water to bead on the surface to protect the material and substructure against any moisture damage. Kit includes: Canvas Cleaner P99 HD 32 oz. bottle, canvas top 16 oz. OER® protectant, applicator pads, gentle wash brush with 18" handle, blue monster microfiber towel, elite microfiber towel.

Canvas Top and Tonneau Cover Formula

K89457 cleaner, protectant & applicator 39.99 kit

Components

Cleaner, protectant, VRT dressing, pads, brush, and towels can be purchased individually.

K89479	32 oz. P99 HD top cleaner	14.99
K89430	16 oz. fabric protectant	14.99
K89616	32 oz. TNT vinyl dressing	26.99
K89816	microfiber applicator pad	6.99
K89835	soft wash brush w/18" handle	12.99
K89819	gold elite microfiber towel	4.99
K89805	blue monster microfiber towel	5.99

P99 HD Interior Fabric Cleaner

The beautiful thing about P99 HD: It leaves no film. After cleaning fabric, carpet, floor mats, convertible tops, vinyl tops, seat upholstery, door panels, vinyl, plastic, aluminum, you will have a clean surface free of any residue. This strong all purpose cleaner should be diluted 30:1 for light jobs, 15:1 for medium, and 5:1 for heavy dirt. Apply with a sprayer or sponge. Agitate stubborn dirt with a brush. Our P99 HD Secret Formula Interior Exterior Multi-Purpose Fabric Cleaner works quickly as a spot cleaner for all color fast fabrics. Will not stain or leave a ring around area cleaned. When you blot with a clean dry cloth, the liquid containing the stain transfers to the cloth.

K89479 32 oz. bottle spray bottle..... 14.99 ea
K89504 1 gallon (industrial strength).. 19.99 ea



OER® Premium Metal Polish & Sealant

OER® Extreme Shine Metal Polish & Sealant cuts through layers of dulling oxides to restore a wet mirrorlike finish that outshines chrome. This outstanding polish makes chrome, copper, brass, aluminum, stainless steel and other metalwork gleam and look their absolute best. Spreads on easy, buffs off with little effort. Great for oxidized metals and even light rust. Can be easily applied in the shade or sun. Leaves virtually no smear, dust, or powder. Utilizing friction and heat OER® Extreme Shine Metal Polish cleans, restores, revives and polishes. Friction generates heat that allows the product to break down into a micro-fine polish that leaves the surface shining like a mirror. During the final phase, it breaks down to release the durable protective shield that bonds to metal surfaces, reducing corrosion and prolonging shine. Use by hand with a polisher or with your polish ball and drill.

K89483 16 oz. bottle..... 17.99 ea

OER® "Secret Formula" OER

Acryli-Shine Glaze

Glaze is a polish without any cleaning properties used primarily to improve the shine and clarity of paint. Primarily used by body shops for finishing jobs or by detail shops to bring out the brilliance of paint, glazes are also commonly used on show vehicles to achieve a "high luster or wet look." Your moldings will not turn white. Glazes do not replace polishing. If a surface has minor swirls and imperfections, to achieve the best superior results, the surface should be polished with a polish first.

K89620 32 oz. bottle..... 24.99 ea
K89621 1 gallon..... 59.99 ea



K89479

K89479

K89479

K89479

K89479

K89479

K89479

K89479

K89479

K89479

K89479

K89479

K89479

K89479

K89479

K89479

K89479

K89479

K89479

K89479

K89479

K89479

K89479

K89479

K89479

K89479

K89479

K89479

K89479

K89479

K89479

K89479

K89479

K89479

K89479

K89479

K89479

K89479

K89479

K89479

K89479

K89479

K89479

K89479

K89479

K89479

K89479

K89479

K89479

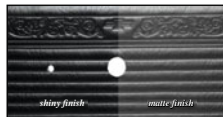
K89479

K89479

K89479

K89479

K89479



shiny finish

matte finish

Ice Super Shine High Gloss Dressing

The Ice Super Shine Dressing is a thick silicone rich dressing that leaves a super high gloss, long-lasting shine on tires, rubber molding, vinyl, and plastic. This dual action premium dressing leaves surfaces 100% dry to the touch and shining better than new, while protecting the surface against dirt, dust and harmful UV rays.

K89521 32 oz. spray bottle..... 26.99 ea
K89522 1 gallon..... 42.99 ea



K89521

K89522

Finishing Touch Matte Finish Protectant

Finishing Touch is an all purpose dressing that restores the "new car look" to vinyl, rubber, leather, and plastic. It cleans, beautifies, and protects. It is preferred by many detailers for interiors for its "softer" look and non-greasy banana fragrance. Patented UV absorber penetrates and acts as a protective barrier against harmful rays that cause premature aging, cracking, fading, and peeling. Perfect for dashboards, vinyl tops, door panels, consoles, tires, trim, bumpers, vinyl seats, moldings, and more.

K89523 32 oz. spray bottle..... 27.99 ea
K89524 1 gallon..... 27.99 ea



K89523

K89524

PS120 Ammonia Free Premium Glass Cleaner

PS120 Windows is a streak-free, tint safe, ammonia free window cleaner that is quite possibly the best window cleaning liquid ever made. This is a concentrated formula that can be used as is, or diluted 1:1 or as needed. This powerful, biodegradable glass cleaner removes smoker's film, grime, and dirt, with an easy pass. Leaves no smear or streaks. Great on tinted glass, regular glass, chrome, and mirrors. No foam and no harsh smell. Just wipe and watch dirt, grease, water spots, smudges, fingerprints, forehead gear, and just about anything else disappear. No streaks ever!

K89510 32 oz. spray bottle..... 13.99 ea
K89511 1 gallon..... 15.99 ea



K89510

K89511

Professional Products For The Truck Enthusiast!

OER® Acid Free Wheel and Tire Cleaner

Spray-on and rinse-off!
Easily removes deposits of brake dust, grease, and road grime from wheels. Safe for clear coated, painted, and polished finishes. This strong non-acid formula is fortified with a citrus cleaning agent. This is an industrial strength 1:1 concentrate. Dilute with water as needed. Unlike many alternative products, OER® Acid Free Wheel Cleaner dissolves grime and brake dust without damaging your chrome and alloy wheels.



K89614	32 oz. bottle.....	14.99 ea
K89615	1 gallon.....	21.99 ea

OER® TNT Extended Life Tire & Trim Dressing

This unique formula quickly penetrates rubber trim and tires to hydrate and provide lasting protection. TNT Extended Life gel by OER® finally delivers on that promise. Simply wipe on using a pad and TNT gel restores the look of faded tires, trim, bumpers, seals, and weatherstrips. What's more, OER® TNT gel lasts for many months, not days. Our exclusive no-streak, no-run, and no-slip formula works to repel water and detergents and helps keep tire walls hydrated and supple as well as looking brand spanking new. Prepare your trim for a product unlike any other. A true premium trim restorer and protectant, that will not drip, dry out, or destroy surfaces. Provides unmatched durability, ease of application and a superior "new look" shine that lasts through numerous washes. Non-greasy, non-tacky and simply amazing.



K89616	32 oz. bottle.....	21.99 ea
K89617	1 gallon.....	34.99 ea

OER AUTHORIZED



Professional Detailing Brushes

These are professional type brushes that will make detailing your classic a little easier. They feature heavy-duty, soft or gentle bristles, depending on the cleaning job on hand.

8" Handle - Soft Bristles Wash Brushes		
K89832	green.....	9.99 ea
K89834	gray/white.....	9.99 ea
K89836	blue.....	9.99 ea
18" Handle - Strong Bristles Scrub Brushes		
K89833	green.....	12.99 ea
K89835	gray/white.....	12.99 ea
K89837	blue.....	12.99 ea

Plastic Polish and Headlight Restorer

Fantastic Plastic Polish/Headlight Restorer restores, revitalizes, and protects while removing yellow film, cloudy streaks, hairline scratches, haze and halos from clear, smooth plastics. Excellent on headlight covers, taillight lenses, bug deflectors, instrument covers, convertible top windows and motorcycle windcreens. Protects against UV rays. For hand or machine use. Available in 16 oz. pint size bottle. VOC compliant.



K89528	16 oz. bottle.....	11.99 ea
--------	--------------------	----------



OER AUTHORIZED Secret Weapon Polish Ball

The Secret Weapon Polish Ball bends and compresses enabling it to fit into tight spaces and make the cleaning and polishing of difficult, hard to reach areas like wheels, rims, and other metal work much easier. Can be attached to any handheld drill or drill-like device for fast and superior cleaning and polishing. Great for cleaning and buffing small items like mirrors, headlight lenses and trim parts. Space age Dura-foam and fiber soft materials make it the most durable tool of its kind. Ideal for use with your favorite wax, polish, wheel product, or compound.

K89412	3" red foam ultra fine density.....	10.99 ea
K89413	3" yellow foam med. density.....	10.99 ea
K89490	3" wool-like fiber material.....	19.99 ea

OER AUTHORIZED



Pickup Layers of Dust w/One Sweep!

An easy way of keeping your vehicle clean and free of dust, looking like it was just washed. It's specially treated cotton fibers lift dust off the surface without scratching the paint, even delicate lacquers. The more you use it, the better it works! Regular use can significantly reduce the frequency of washings.

Duster Sets		
62444	large and mini dusters.....	29.99 set
62447	large & mini w/extra mop heads.....	42.99 set
Individual Components		
62441	large duster.....	21.99 ea
62443	mini duster.....	10.99 ea
Replacement Mop Heads without Handle		
62445	large mop head.....	8.99 ea
62446	mini mop head.....	4.99 ea
62440	2 large, 2 mini mop heads.....	25.99 set

Microfiber Wash/Polish Mitt & Pad

OER® Authorized Chenille microfiber wash mitt is gentle on your paint and cleans great. Chenille is a deep pile, velvety cord made of durable, woven microfiber. This plush, absorbent, lint-free and 100% scratch-free mitt is the highest quality wash mitt available.

K89811	premium Chenille wash mitt.....	10.99 ea
--------	---------------------------------	----------

OER AUTHORIZED



Specialty Brush

Keep your vehicle shining with these high-quality specialty brushes. Each brush is specially designed for the application indicated.

TW119	upholstery brush 6".....	7.99 ea
TW117	tire brush 7".....	3.99 ea
TW114	wheel/bumper brush 10".....	5.99 ea
TW121	grill/spoke brush 12".....	5.99 ea
TW122	grill/spoke brush 16".....	12.99 ea
K89497	soft foam wheel/spoke brush.....	9.99 ea



Microfiber Applicator Pads

Microfiber applicator pads are the ideal choice for applying wax, sealants, glazes, dressing, or your favorite conditioners. Won't scratch paint or clear coat. They absorb 8 times their own weight in water and hold dust, dirt, grease, and spills. Simply rinse and reuse.

K89828	5" round.....	4.99 pr
K89816	professional grade.....	6.99 pr

Monster Microfiber Towel

Fattest, thickest and most absorbent microfiber towel. They are durable and silk banded for long-lasting use with streak and scratch free results every time.

K89805	16" x 16" individual.....	5.99 ea
K89806	16" x 16" 3 pack.....	15.99 set
K89807	17" x 24" single.....	6.99 ea
K89808	17" x 24" 3 pack.....	21.99 set

Elite Microfiber Towel

Extra plush, super absorbent, lint free and 100% scratch free. The long fiber side works great in quick detail and waterless car wash applications. The short fiber side is great for buffing and cleaning windows.

K89819	16" x 16" individual.....	4.99 ea
K89820	16" x 16" 3 pack.....	11.99 set
K89824	25" x 36" extra thick.....	12.99 ea

Rust Removal and Prevention



OER® Rust Treatments

OER® Chemical Restoration Dissolve Rust returns rusted surfaces to bare metal without harming the integrity of the metal. OER® Etch Metal inhibits rust and promotes paint adhesion for bare metal surfaces.

OER® Convert Rust instantly neutralizes rust and converts the rusted surface, leaving a protective dark polymer coating.

OER® Dissolve Rust
K86110 quart..... 19.99 ea

OER® Etch Metal
K86114 quart..... 16.99 ea

OER® Convert Rust
K86112 quart..... 35.99 ea



DiamondFinish® Clear Coat

DiamondFinish Gloss Clear Top Coat is a permanent, moisture cured, UV stable coating primarily used for top coating surfaces previously sealed with RustSeal®, for top coating direct to metal, or to coat over any other paint/primer application. The clear coat formula can be applied direct to metal or over other coatings. This high gloss clear coat remains permanently flexible and is able to perform in the toughest environments without yellowing, cracking, or peeling. Apply directly to painted surfaces with minimal surface prep. Incredibly tough and hard like no other clear coat on the market. Can be applied with a brush (without leaving any brush marks), roller and conventional spray gun. Unlike two part coatings, no hardener is needed with DiamondFinish. Just stir and go. DiamondFinish clear coat will cure without heat or UV lights in temperatures from 50 to 86 degrees Fahrenheit. Able to withstand the harshest of chemicals including fuels, solvents, battery acid, brake fluid, Ethanol, Methanol, MEK, Hydrochloric Acid, fertilizers, and Acetone. Graffiti resistant: because of its chemical resistance, graffiti just won't stick and can be removed simply with a solvent soaked rag. Great for high temperature automotive applications including the use on cylinder heads, engine blocks, brake components and even inlet manifolds, without yellowing up to 300 degree Fahrenheit.

K88114 15 oz. net wt. aerosol..... 25.99 ea
K88304 one pint..... 42.99 ea
K88404 one quart..... 63.99 ea
K88504 one gallon..... 209.99 ea



thinner

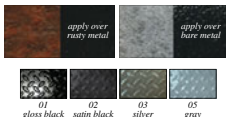
KB45 - one gallon



one quart

one pint

8 ounces



apply over rusty metal

apply over bare metal

01

02

03

05

gloss black

satin black

silver

gray

06

08

15

oxide red

off-white

galv. steel

RustSeal® Corrosion Barrier Coating

RustSeal is a superior one part, ready-to-use, high solids content, rust preventive, corrosion barrier coating. RustSeal flows out to a beautiful, rock-hard, tough ceramic-like coating that is tough to chip or scratch, and will not crack or peel. RustSeal is an incredible, single component, ready-to-use, high solids content, rust preventive coating with exceptional sealing properties. RustSeal is the most permanent cost effective solution for stopping rust and corrosion anywhere where it is a problem: home, automotive, industry, fleet, farm, and more! RustSeal is an enhancement that lasts. Water and air are locked out, therefore oxidation, the precursor to rust, cannot take hold. RustSeal is not intended for use as a final finish. After removing or treating rust on floors, subframes, or other under vehicle components, RustSeal Corrosion Barrier Coating works by isolating the surface from moisture and oxygen. This single component, high solids, rust stopping coating seals out the ultimate causes of rust, creating a rock hard non-porous barrier between the metal and rust promoting elements. Will not crack, chip, flake, or peel, and no hardeners or activators are needed. RustSeal is completely unaffected by salt, gasoline, oils, battery acids, hydraulic fluids, solvents, chemicals, or corrosives.

RustSeal® Coating

Note: add the 2 digit numerical color code to the end of the part number to specify your desired color when ordering.

KB42 eight ounces..... 21.99 ea
KB43 one pint..... 33.99 ea
KB44 one quart..... 49.99 ea
KB45 one gallon..... 159.99 ea

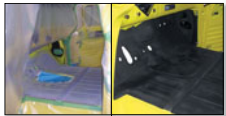
RustSeal® Thinner

Note: This product is designed specifically to thin our rust preventive coatings for cleanup purposes or for thinning the coating for use in a spray gun.

KB6200 eight ounces..... 9.99 ea
KB6400 one quart..... 18.99 ea
KB6500 one gallon..... 45.99 ea



Buy the Complete Kit & Save!



BEFORE APPLICATION AFTER APPLICATION

Shovel Benefits:

- Easy spray-on application
- Continuous protective moisture barrier
- Fast clean up with soap and water
- Environmentally friendly solution
- Applicable to interior or exterior of vehicle
- Non-toxic and class A fire rated
- Both are paintable
- Coverage is approximately 50 ft² gallons

Sound Control Benefits:

- Provides non-combustible thermal insulation
- Able to withstand temperatures up to 500 degrees F
- Interior temperature reduced by 30 degrees F
- Offers a protective, seamless membrane

Ceramic Insulation Benefits:

- Protects surface from moisture and rust
- Dampens annoying rattles and road noise
- Impressive damping to weight ratio
- Coating can withstand temperatures up to 300 degrees F

Sound Control and Ceramic Insulation

Get the comfort of premium grade insulation without the extra weight! These environmentally safe formulas from LizardSkin can be used as a one part coating or as a two stage system for a cooler, quieter driving experience. The Sound Control formula dampens unwanted engine and road noise, while the Ceramic Insulation formula cools your vehicle up to 30 degree F or more creating a more comfortable ride. Designed for floors, roofs, firewalls, fenders, transmission tunnels, door panels, trunks, and more, all at a combined curb weight of 52 lbs for four gallons. Insulating a vehicle has never been this easy, thanks to a custom designed application gun made specifically to handle the thick density of the coatings with ease. Order the individual components or buy a complete kit and save!

Important: For two stage applications, Sound Control coating should be used as the base. Four gallons of each coating are required to encapsulate a typical interior and trunk area of 1 vehicle, and 1 gallon of Sound Control when applied as undercoating.

Sound Control

152984 1 gallon pail..... 99.99 ea
152985 2 gallon pail..... 189.99 ea

Ceramic Insulation

152986 1 gallon pail..... 99.99 ea
152987 2 gallon pail..... 189.99 ea

SuperPro Gun

152988 with stir paddle..... 129.99 ea

Mini Kits - Includes SuperPro Gun

R8091 4 gallons of Sound Control..... 484.99 kit

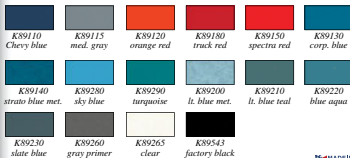
R8092 4 gallons of Ceramic Insulation..... 484.99 kit

Complete Kit - Includes SuperPro Gun
R8093 4 gallons of each formula..... 845.99 kit

OER® Aerosol Coatings



- Correct Original Colors
- Simple to Use Spray Can
- Cost Effective/No Waste
- Heat Resistant to 400 degrees F
- High Hiding Formulation
- Manufactured in the USA!

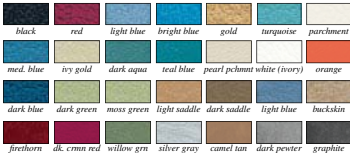


OER® Classic Blend Engine Paint

Classic Industries® is proud to present OER® Classic Blend engine paints for your classic vehicle restoration. Each product offers maximum coverage and adhesion to air cleaners, engine blocks, heads, intake manifolds, valve covers, water pumps, oil pans, transmission cases, and more. Effective against rust, gas, oil, grease, salt, humidity, and intermittent temperatures up to 400 degrees F. Extensive factory correct color selection is available with high hiding capability. Spray gun results without the mess and hassle associated with mixing paint and cleaning the equipment. Available individually in a 16 oz. aerosol can (net wt. 12 oz.) or buy a case of 6 and save!

Note: Ships ground only. No air shipment.

Retail Pricing		Aerosol \$19.99 ea	Case of 6 \$89.99
Chevrolet			
1951-62	Chevy blue	K89110	K89111
1962-prior	medium gray	K89115	K89116
1977-prior	orange red	K89120	K89121
GM			
1963-79	truck engine red	K89180	K89181
1966-prior	spectra red	K89150	K89151
1977-82	corporate blue	K89130	K89131
1975-77	strato blue metallic	K89140	K89141
Pontiac			
1959-60	sky blue	K89280	K89281
1961-65	turquoise	K89290	K89291
1966-70	light blue metallic	K89200	K89201
1971-73	light blue teal	K89210	K89211
1973	blue aqua	K89220	K89221
1973-74	slate blue	K89230	K89231
All Vehicles			
all	gray primer	K89260	K89261
all	gloss clear	K89265	K89266
all	factory black high gloss	K89543	K89594



OER® Premium Quality Aerosol Interior Paint

OER's revolutionary formula provides 40% more coverage than standard dyes and lacquers, and actually penetrates and molecularly bonds to the surface to permanently seal in the color. Dries to the touch in 45 seconds, forms a complete bond in just 10 minutes. UV stable and color fast, it will not crack, flake, or peel. For use on vinyl, leather, ABS plastic, polycarbonate, polypropylene, polyurethane, acrylic, lexan, fiberglass, and recycled plastics. When only the best will do, use OER® Premium Quality Interior Paint. Available in your choice of a convenient 16 oz. aerosol can (net wt. 12 oz.) or for bigger jobs where a spray gun is required.

Note: Shipped within the continental U.S. only. Shipped ground only.

Retail Pricing

		Aerosol \$19.99 ea
1962-79	black	PP801
1962-69	red	PP802
1965-67	light blue	PP803
1966-67	bright blue	PP804
1967-70	gold	PP805
1967-68	turquoise	PP806
1967	parchment	PP807
1968	medium blue	PP808
1968	ivy gold	PP809
1968	dark aqua	PP857
1968	teal blue	PP858
1968	pearl parchment	PP825B
1968	clear top coat	N/A
1969	white	PP810
1969	Hugger Orange	PP811
1969	dark blue	PP812
1969	dark green	PP813
1969	moss green	PP814
1970-76	light saddle	PP817
1970-76	dark saddle	PP818
1975-77	light blue	PP822
1976-77	buckskin	PP837
1976-79	firethorn red	PP829
1977-79	dark carmine red	PP830
1977-79	dark willow green	PP835
1977-79	silver gray	PP836
1978-79	camel tan	PP820
1998-07	dark pewter	PP883
2007	graphite	PP883

OER® Aerosol Coatings



Interior Surface Preparation Formulas

Before spraying, be sure to properly prepare the surface for top coat. We offer a variety of surface preparation products to ready reproduction dash pads, headrests, door panels, padded pillar moldings, plastic parts, metal components and other parts for the application of the top coat.

Note: Shipped within the continental U.S. only. Shipped ground only.

Colorbond Prep Cleaner

PP1009 net wt. 4 oz. 6.99 ea

Paint Adhesion Promoter

PP215 16 oz. aerosol can (net wt. 12 oz.) 19.99 ea



black taupe gray dark gray crimson red

OER® Carpet Restoration Formula

Formulated to enhance and restore faded, worn or stained surfaces, our OER® carpet dyes molecularly bond to carpeting for a finished result that will not wear off. A great product for restoring carpet or for spraying carpeted trim panels on consoles, door panels, and other carpeted trim. An easy way to renew worn or stained carpeted floor mats as well. Available in a convenient user friendly aerosol spray that dries in minutes. Available in a variety of colors to match or accent your interior. Order each color individually in a 16 oz. aerosol can (net wt. 12 oz.) or buy the case of six cans and save!

Note: Shipped within the continental U.S. only. Shipped ground only.

Individual 16 oz. Aerosol Can (Net Weight 12 oz.)

PP900 black 19.99 ea
PP901 taupe 16.99 ea
PP902 gray 19.99 ea
PP903 dark gray 19.99 ea
PP904 crimson red 19.99 ea

Case of Six Cans

PP905 black 178.99 cs
PP907 gray 178.99 cs
PP908 dark gray 178.99 cs
PP909 crimson red 178.99 cs

OER® Metal Mimic FX Coating

OER® Metal Mimic FX high-performance coatings were developed to mimic the appearance of bare metal so that you can refinish and protect all of the components that were originally left unpainted by the factory. Items such as cast iron housings, aluminum housings, stainless steel parts, galvanized parts and even chrome can now be coated with a "factory correct" looking finish that is extremely durable and amazingly close to the original color.

Note: Ships ground only. No air shipment.

Individual 16 oz. Aerosol Can (Net Weight 12 oz.)

K89500 Aluminum Blast Coating 16.99 ea
K89502 Cast Blast Cast Iron Gray Coating 14.99 ea
K89501 Galv Blast Zinc Coating 18.99 ea
K89091 Stainless Steel Coating 19.99 ea
K0090 Cast Iron Gray - High Temp. 19.99 ea

OER® Factory Black Coatings

OER® factory black coatings are available in a variety of sheen levels to help you achieve the correct factory look for your restoration. Our Ultra Flat sheen is an extremely flat non-glare finish. The next level up is our low gloss formula followed by the semi-gloss and finally our exclusive high gloss formulation. Whatever you are spraying, we have the correct sheen for an original factory black look.

Note: Ships ground only. No air shipment.

Factory Black Set

Buy the complete OER® Factory Black set and you will have all the necessary sheen levels for a correct factory look no matter what component you are spraying.

K89550 4 can set - all four sheens 59.99 set

Ultra Flat Factory Black

Extremely flat non-glare finish that is perfect for a variety of uses including underhood items. Provides a durable flat black zinc phosphate look without the high cost of black zinc phosphate plating.

K89540 16 oz. aerosol can (net wt. 12 oz.) 19.99 ea
K89590 case of six cans 89.99 cs

Low Gloss Factory Black

A durable low gloss coating that provides a factory fresh appearance on the frame, transmission crossmember, or anywhere else a low gloss, but not quite flat black finish is desired.

K89541 16 oz. aerosol can (net wt. 12 oz.) 19.99 ea
K89592 case of six cans 89.99 cs

Semi-Gloss Factory Black

A durable low gloss coating that provides a factory fresh appearance on the underside of the hood and suspension components or anywhere else a semi-gloss black finish is desired.

K89542 16 oz. aerosol can (net wt. 12 oz.) 19.99 ea
K89593 case of six cans 89.99 cs

High Gloss Factory Black

A high gloss coating that is perfect for restoration of air cleaner assemblies, valve covers, and any other parts where a durable gloss black finish is desired.

K89543 16 oz. aerosol can (net wt. 12 oz.) 19.99 ea
K89594 case of six cans 89.99 cs



Chassis Inspection Mark Paint

Restore the many colored factory marks found on your suspension, engine and driveline components. These marks are found on most cars, and were used for inspection, parts picking codes and alignment marks. These inspection paints are color matched to original. In many cases they're supplied with technical bulletins to help you apply them in the proper locations. Supplied in 2 oz. brush top bottles.

PM03101	dark blue	11.99 ea
PM03102	bright yellow #1	11.99 ea
PM03103	white	11.99 ea
PM03104	orange #1	11.99 ea
PM03105	green #1	11.99 ea
PM03106	dark green #2	11.99 ea
PM03107	red	11.99 ea
PM03108	spinnaker orange	11.99 ea
PM03109	pitman arm blue	11.99 ea
PM03110	lavender	11.99 ea
PM03111	orange #2	11.99 ea
PM03112	orange #3	11.99 ea
PM03113	green #3	11.99 ea
PM03114	yellow #2	11.99 ea
PM03115	light blue	11.99 ea
PM03116	dark blue	11.99 ea
PM03118	crossmember orange	11.99 ea
PM03120	purple	11.99 ea
PM03121	dark green	11.99 ea
PM03122	bright green	11.99 ea
PM03123	gray	11.99 ea
PM03124	pink	11.99 ea
PM03125	pink	11.99 ea



Firewall and Frame Marking Crayons

These are the correct "grease pencil style" crayons used for marking the factory inspection marks on your firewall, subframe, and other various sheet metal areas. Included are a yellow and a white marking crayon.

K0084 2 piece 8.99 pr



Frame, Engine, and Body Marker

Auto makers use these permanent markers to write codes and numbers on frames, engines and body components. Engine suffix codes were often written on the back of the cylinder heads. Job numbers were written on the firewall, frame, engine and other components to assure the correct vehicle was being built according to the build sheet. These permanent paint markers will help you exactly duplicate the factory original marks.

PM0301	white	8.99 ea
PM0302	green	8.99 ea
PM0303	orange	8.99 ea
PM0304	red	8.99 ea
PM0305	yellow	8.99 ea

OER® Aerosol Coatings

OER® Rubberized Undercoating

A black, rubberized undercoating for all automobile under surfaces. Sprays evenly and dries completely to a smooth consistency. Can be top coated with any type of automotive finish. Prevents rust, reduces road noise, seals out water, fumes, road chemicals, and dust. Special formula greatly reduces lingering odor associated with most other brands of undercoating. No "bleed through" when top coated. Use on undersides of panels, hoods and deck lids, trunk interiors, section repairs, weld joints, rust holes, or on chassis parts. 20 oz. aerosol can (net wt. 18 oz.) or buy a case and save!



Note: Ships ground only. No air shipment.

K89570 20 oz. can..... 24.99 ea
 K89669 case of six cans 119.99 cs

OER® Black Wrinkle Finish

A durable and long-lasting finish which has a unique wrinkled texture. Excellent hiding qualities provides an excellent finish for hiding surface imperfections such as pitting, scratches, or chips. Extremely durable formula resists oil, gas, and grease. Can be used where harsh conditions break down conventional coatings. Comes in 12 oz. net wt. aerosol can. Great for valve covers, air cleaners, dash components, and more. 16 oz. aerosol can (net wt. 12 oz.) or buy a case and save!



Note: Ships ground only. No air shipment.

K89548 16 oz. can..... 17.99 ea
 K89549 case of six 69.99 cs

OER® High Solids Detail Coatings

A superior professional grade coating formulated for restorations where maximum performance is required. These high solid paints do not run or sag, and provide twice the coverage of conventional aerosol enamels. Each 20 oz. (net weight 16 oz.) can offers the highest solid content (40%) of any aerosol paint on the market for maximum coverage.

Note: Ships ground only. No air shipment.

Individual 20 oz. Aerosol Can (Net Weight 16 oz.)

K89577	gloss black	19.99 ea
K89578	flat black	19.99 ea
K89579	aluminum	19.99 ea
K89580	stainless steel	19.99 ea
K89581	dark gray	19.99 ea

Case of Six Cans

K89677	gloss black	107.99 cs
K89678	flat black	107.99 cs
K89679	aluminum	69.99 cs
K89680	stainless steel	80.99 cs
K89681	dark gray	86.99 cs



OER® Original Hue Paint

OER® Original Hue paints are specially formulated to perfectly match the factory colors of specific components installed on your vehicle at the factory. Unique shades are available so you can duplicate the OE finishes on a variety of parts including Saginaw steering boxes and Delco shock absorbers from the 60's and 70's. 16 oz. aerosol can (net wt. 12 oz.).

Note: Ships ground only. No air shipment.

Saginaw Steering Box Blue/Gray
 K89531 16 oz. can 19.99 ea

Hi-Temp Exhaust Coat

A fast drying coating to withstand temperatures up to 1200 degrees F on a continuous basis. Forms a porcelain like bond after curing. Resists blistering, peeling, discoloration, or loss of adhesion. Excellent for headers, manifolds, mufflers, pipes, and more.



Note: Ships ground only. No air shipment.

16 oz. Aerosol Can (Net Wt. 12 oz.)
 K89555 silver 17.99 ea
 K89556 black 19.99 ea
 K0090 cast iron gray ... 19.99 ea

Case of Six Cans

K89557	silver	79.99 cs
K89558	black	79.99 cs
K89559	cast iron gray	79.99 cs



OER® Professional Grade PBE Primers

OER® is pleased to offer our professional grade primers specifically formulated to meet the performance needs of body shop personnel but conveniently packaged for the automotive enthusiast. Tough and dependable, these primers adhere extremely well, prevent rust and corrosion and enhance the quality and appearance of the finished product. Large fan spray head gives a professional looking application. Eliminates the need for a spray gun for small repairs, reduces cleanup time.

Note: Ships ground only. No air shipment.

OER® Self-Etching Sanding Primers

Manufactured with a modified acrylic resin to give you excellent adhesion to all types of metal, aluminum and prepared surfaces. Dries to the touch in 10 minutes. Dry to sand or top coat in 15 minutes. Available individually in 20 oz. cans or in case of six.

Individual 20 oz. Aerosol Can (Net Weight 15 oz.)

K89560	gray	17.99 ea
K89561	black	17.99 ea
K89562	red oxide	19.99 ea

Case of Six Cans

K89660	gray	69.99 cs
K89661	black	69.99 cs
K89662	red oxide	69.99 cs

OER® High Solids Sanding Primers

A superior professional grade primer formulated with 40% solids to provide twice the coverage of conventional aerosol primers. Fewer cans needed to complete the job to save you time and money. Protects against rust and corrosion. Provides excellent adhesion with single coat hiding capability and minimum over spray. Available individually in 20 oz. cans or in case of six.

Individual 20 oz. Aerosol Can (Net Weight 17 oz.)

K89573	red oxide	19.99 ea
K89579	gray	19.99 ea

Case of Six Cans

K89664	red oxide	107.99 cs
K89665	gray	107.99 cs

OER® Zinc Phosphate Primers

Specially formulated primer that is chromate free and chemically bonds with iron, steel and aluminum to form a hard, highly adherent coating. It has exceptional corrosion resistance. Ideal for spot repair of damaged coatings. Exceptional protection against rust and corrosion. Compatible under two component coatings. Forms a hard, highly adherent, water resistant coating that can be painted or left as is. Dries to the touch in 10 minutes. Available individually in 12 oz. cans or in case of six.

Individual 16 oz. Aerosol Can (Net Weight 12 oz.)

K89565	green	17.99 ea
K89566	yellow	17.99 ea

Case of Six Cans

K89666	green	79.99 cs
K89667	yellow	79.99 cs

OER® Spray Galvanizing Weld-Thru™ Coating

A smooth, cold galvanizing compound that chemically fuses to bare steel and forms a extremely rust resistant barrier. Perfect for application on the inside of newly installed panels where rust prevention of new metal is important, but where the part treated will not be painted. Fast dry, spray free spray that is abrasion resistant. Stops rust creepage, resists chemicals and is rust inhibitive. Apply it to sheet metal pieces before installation, then weld as usual. The coating will not affect the quality of the weld, and will retain its rust preventative properties. Available individually in 12 oz. cans or in case of six.

Individual 16 oz. Aerosol Can (Net Weight 12 oz.)

K89567	gray	21.99 ea
--------	------	----------

Case of Six Cans

K89668	gray	89.99 cs
--------	------	----------

OER® Aerosol Coatings



K89320

OER® Factory Wheel Coating

OER



OER® factory wheel coatings are available in a variety of original colors so you can achieve the correct factory look on the restoration of your wheels. Make your wheels look like they just rolled out of the factory with this spray wheel coating. Eliminates the need for expensive custom paint mixing and greatly simplifies the restoration process by providing spray gun results without the hassle and mess of a spray gun or the need for an air compressor. Available individually in 16 oz. (net weight 12 oz.) cans or in case of six.

Note: Ships via ground freight only and is shipped exclusively within the continental U.S. as no air shipments are permitted on aerosol spray cans.

Rally Wheel Argent Silver

Correct color and sheen for the restoration of Rally I, Rally II, and Super Sport wheels. Makes your wheels look like they just rolled out of the factory.

K89320 16 oz. can 19.99 ea
 K89321 case of six 16 oz. cans 89.99 cs

Rally Wheel Argent Silver/Green

Correct color and sheen for the restoration of 1968-74 Rally wheels that call for Argent Silver with a slight green hue.

K89325 16 oz. can 19.99 ea
 K89326 case of six 16 oz. cans 89.99 cs

OER



K89310

K89330

Z28 5-Spoke Mag Wheel Paint

Correct color, sheen and texture for the restoration of 1970-81 Z28 5-spoke mag wheels also known as "Trans Am", "high-performance" or "5-spoke Rally" wheels. Correct for 1970-72 Chevelle and El Camino 5-spoke factory wheels as well.

Shadow Gray
 K89310 16 oz. can 19.99 ea
 K89311 case of six 16 oz. cans 89.99 cs

Rally II Wheel Insert Paint

Charcoal gray metallic paint for the restoration of the pie-shaped wheel insert area on Rally II wheels. Correct color, tone and luster for a factory fresh appearance.

Charcoal Gray Metallic
 K89330 16 oz. can 19.99 ea
 K89331 case of six 16 oz. cans 89.99 cs



K89540

OER

OER® Underhood Detail Paint



The perfect alternative to expensive zinc phosphate plating. A variety of choices are available to correctly refinish underhood items such as hood hinges, hood latch and safety catch, pulleys, nuts, bolts, brackets, clips, and more with a durable flat or non-gloss finish that mimics the appearance of zinc phosphate plating. 16 oz. aerosol can (net wt. 12 oz.).

Note: Ships ground only. No air shipment.

K89540 factory black 19.99 ea
 K89520 dark gray 19.99 ea

OER® Clear Enamel

OER

This specially formulated engine paint is unaffected by rust, gasoline, oil, grease, salt and extreme humidity, is resistant to temperatures of up to 400 degrees Fahrenheit, offers excellent hiding ability and delivers spray-gun quality results without the mess or hassle of mixing paint or cleaning equipment. Provide extra durability and color depth on a variety of surfaces. OER® Clear Enamel will enhance the appearance of engine components, wheels, suspension components, and other painted and unpainted surfaces where a gloss clear top coat is desired.

16 oz. aerosol can (net wt. 12 oz.).

Note: Ships ground only. No air shipment.

K89265 gloss clear 19.99 ea



Experience Spray Gun Control!



Transform your aerosol container into a versatile spray gun. Using it's unique "lock-on" device, simply snap it on and spray! You'll experience better control for applying steady even coats, easy handling and comfort, all adding up to reduced fatigue. Use with paints, lubricants, cleaners, craft sprays, and more! Universal fit for most aerosols.

81005 can gun 7.99 ea

Binks 2100 Spray Gun

OER AUTHORIZED

This is the style gun that was used at the factory to apply the trunk splatter paint in the correct consistency and pattern. Includes the correct fluid nozzle, needle, and air nozzle. Will spray all conventional coatings, including those with high solids. Features a forged aluminum body that has been precision machined, and brass air nozzles and knobs that are nickel-plated.

Note: Pressure pot required and not included.

A9250101 spray gun... 369.99 set
 A9250102 2 qt. pot..... 399.99 ea
 A9250103 5' air hose... 45.99 ea



A9250101