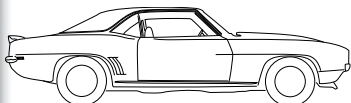


# Camaro Model Information



**First Generation: 1967-69**

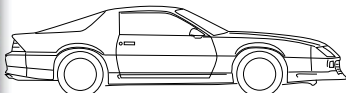
2 door Sport Coupe

2 door Convertible

Standard  
Z28

Super Sport  
ZL1 (1969 only)

Rally Sport



**Third Generation: 1982-92**

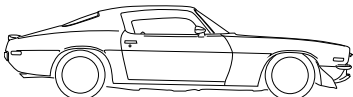
2 door Sport Coupe

2 door Sport Coupe Convertible

Berlinetta  
IROC  
IROC-Z

Z28  
Type LT

Z50 Indy Edition  
RS



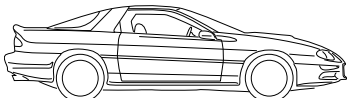
**Second Generation: 1970-81**

2 door Sport Coupe

Standard  
Z28

Super Sport  
Type LT

Rally Sport  
Berlinetta



**Fourth Generation: 1993-2002**

2 door Coupe

2 door Convertible

Standard  
Super Sport  
30th Anniversary Z28

Z28  
Police  
35th Anniversary

RS  
Super Sport

# Model Year Production Numbers

*Note: These numbers are not exact. They were compiled from reliable resources, but, even Chevrolet, or GM, does not know exactly how many Camaros were delivered to the public.*

1967	220,906
1968	235,147
1969	243,085
1970	124,901
1971	114,630
1972	68,651
1973	96,751
1974	151,008
1975	145,770
1976	182,959
1977	218,853
1978	272,631

1979	282,582
1980	152,005
1981	126,138
1982	189,735
1983	154,381
1984	261,591
1985	180,018
1986	192,219
1987	137,760
1988	96,275
1989	110,739
1990	35,000

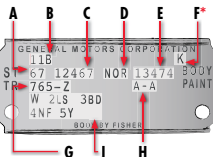
1991	100,838
1992	70,007
1993	40,224
1994	125,244
1995	122,725
1996	61,362
1997	54,972
1998	49,218
1999	42,098
2000	45,461
2001	29,009
2002	41,776

# Cowl Trim Plate Identification

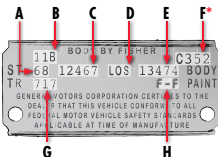
Chevrolet cowl tags or trim plates were attached various locations on the body of Camaro models from their inception in 1967 until 1985. The plates represented a vehicle's most basic body characteristics to Fisher Body, the coachworks for Chevrolet Motor Division. Codes listed included Model Year, Model Description (including model and body style), Assembly Plant, Body Sequence Number, Trim, Body Paint Color, Build Date, and Accessory Code. In 1967, option codes were also listed on the cowl tag. For most model years, the cowl tag was riveted to the body, except in few cases including 1973 and 1974, where it was screwed to the body with sheet metal screws. From 1967 to 1969, the tag was located on the firewall next to the brake booster. From 1970 to 1981, the tag was attached to the cowl next to the windshield, facing up toward the hood. From 1982 to the end of their use in 1985, the tag was affixed to the radiator support.



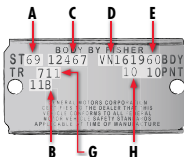
## 1967 Models



## 1968 Models



## 1969 and Later Models



### A. Model Year Code

Last two digits of the model year. For example, the code for a vehicle body manufactured in 1967 would be "67".

### B. Body Build Date Code

Comprised of three digits, 01 through 12 represent each month of the year and A through E represent alphabetically each week of the month. For example, 11B would represent a body build date of the second week of November.

### C. Body Style Code

First two digits represent the Camaro model code ("12") and the last two are the body code. Coupes possess the code "37" while convertibles have the code "67" instead. In 1967, the middle digit was set to "4" for standard interior and "6" for custom interior. From 1968-69, the middle digit had no significance and was set to "4" for all vehicles.

### D. Assembly Plant Code

Three letters indicate the assembly plant code; the Fisher Body plant where the vehicle underwent primary assembly. Between 1967 and 1969, only two plants assembled Camaro models: Norwood, Ohio ("NOR") and Van Nuys, California ("LOS"). In mid-December 1968, the "LOS" code for the Van Nuys plant was changed to "VN".

### E. Fisher Body Number

Up to six digits follow the assembly plant code and represent the Fisher sequential body number. Not to be confused with the V.I.N. sequence, this number was approximately sequential, but was for Fisher Body's tracking purposes only. In 1969, the number was assigned when the order was accepted, not when the body was built. This meant that body numbers were not necessarily sequential.

### F. Fisher Body LOS Scheduling Code

The Los Angeles ("LOS") body scheduling code consists of a letter followed by one to three digits. The letter indicates the production day of the month for the beginning of that vehicle's assembly. The letter "A" indicates the first production day of the month, and was reset the first production day of the next month. The three digits represent the vehicle's approximate production number each day. At the start of the next day, the code was reset to "1". This number is exempt from body style, thus a full size vehicle could be serially located just before a Camaro or Nova. This code was not used on Norwood built vehicles.

\*For 1967 Norwood built cars only, the code was shortened to only one letter and represented the interior paint color code for vehicles built at the Norwood, Ohio plant. Los Angeles ("LOS") cars would retain the common one letter one to three digit code.

### G. Interior Trim Code

The three digits of the TR (trim) code are unique for each year. The combination indicates the color as well as standard or custom interior style. In 1967, a hyphenated letter suffix indicates seat and headrest type. For example, "765-Z" represents the interior trim of standard A50 Strato bucket seats without headrests, trimmed in black custom upholstery.

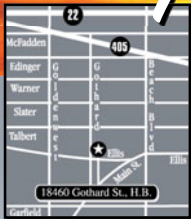
### H. Exterior Paint Code

The exterior paint code indicates body paint color and top color. It included vinyl or convertible top if equipped. For cars without vinyl or convertible top, the body color was stamped on the tag twice. Paint codes had alphabetic codes in 1967-68 and numeric codes in 1969. Vinyl and convertible top codes were numeric in 1967-68 and alphabetic in 1969. Two-tone paint was only offered in 1969, thus the paint code could have two different numeric codes in 1969.

### I. 1967 Body Related Option Codes

This list of option codes was used until 1967 for Chevrolet models and indicated body related options that would be relevant to Fisher Body. The information was eliminated in 1968.

*Concept...*



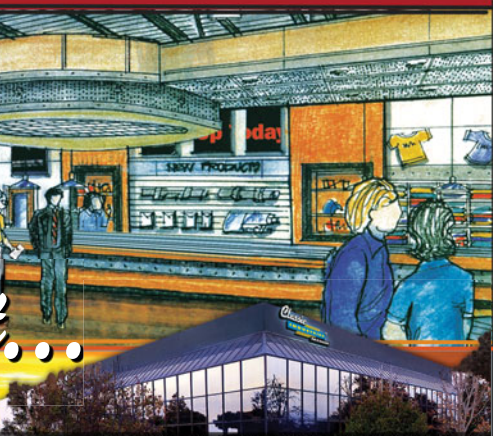
18460 Gothard Street  
Huntington Beach, CA 92648

### Showroom Hours

Monday thru Friday  
8:00 a.m. - 5:00 p.m.

Saturday  
10:00 a.m. - 3:00 p.m.

Sundays and Holidays  
Closed



AMERICA'S FIRST CHOICE IN RESTORATION AND PERFORMANCE PARTS AND ACCESSORIES

### Conveniently Located in Huntington Beach, CA!

- 10 minutes from the beach
- 20 minutes from Knott's Berry Farm
- 20 minutes from John Wayne Airport
- 30 minutes from World-Famous Disneyland

Automotive enthusiasts seeking personal service have always been invited and encouraged to visit our location in Huntington Beach, California. We have recently expanded our showroom facility to make the experience worth the trip for our customers and their families.

More than mere parts counter, our new showroom has something for everyone. A rotation of show cars is on display, including award-winning Classic Industries restorations such as the "TWISTED" Duster, "CAMOTION" Camaro, and "INNOVATION" Nova. Information kiosks let you browse electronically while our entertainment center keeps spouses and younger enthusiasts occupied. Naturally, the latest gift and apparel items are presented along with the newest reproduction parts. Our friendly, knowledgeable staff is ready and able to help with questions and ideas to make your restoration project smooth and easy.



# NEW SHOWROOM!



## **Bring the Family!**

Step past the featured display car and take a seat in front of our entertainment center, designed to create a comfortable atmosphere for enthusiasts, their children, and their significant others. Let the stream of interesting automotive content hold their attention while you check out our unparalleled product line.



## **Discover Our Products**

Browse our unparalleled selection of restoration and performance parts and accessories at these convenient computer terminals. Discover more about the latest great products available for your automotive project from Classic Industries®.



...to Reality



# Your All-Access Pass to Classic Industries®

Receive special sales codes, promotions and product updates on our Facebook, Google+, and Twitter pages!



[www.facebook.com/classicind](http://www.facebook.com/classicind)

Follow us on Facebook and Twitter! Receive special sales codes, promotions and product updates. Stay informed on special events and interact with other automotive enthusiasts, staff and fans of Classic Industries®!

Cruise on over to Classic Industries' new video media website where you can access a library of *Overhaulin'*, *Chop Cut Rebuild*, and *My Classic Car* episodes, Classic Industries® television commercials and how-to videos to guide you through installation processes.

[www.classicindustries.tv](http://www.classicindustries.tv)



Watch up-to-date instructional videos, television commercials and interact with our community of automotive enthusiasts!





# THE ALL NEW

## www.classicindustries.com



**▶ Improved Account Management!**  
Managing your account couldn't be simpler! Update your information, track your orders, build up and modify your wish list, and more, all at your convenience.

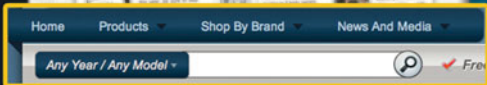
**▶ All New Shopping Experience!**  
Our redesigned website is much more than just a sleek new look. Improved usability and a streamlined checkout process eliminate the hassle of ordering parts for your project!

**▶ More Product Detail!**  
Multiple product views give you the full picture of what you're ordering. "Also Fits" information and the "Ask a Tech" feature ensure that you get the right part for your project!

**▶ Improved Product Search!**  
New search capabilities make it easier than ever to browse our product line! "Shop by Brand" lets you check out the latest from the names you know and the brands you trust!

**▶ Social Media Integration!**  
Social media updates, news, videos and articles are easily accessible right from the main page! See posts from our upcoming Classic Industries® blog site [blog.classicindustries.com/](http://blog.classicindustries.com/)!

**▶ At A Glance!**  
Scroll through the most popular items Classic Industries® has to offer using our new *Most Popular*, *Top Sellers* and *Most Viewed* tabs!



# Four Ways to Order!



## ORDERING BY PHONE TOLL FREE 800-854-1280

In the continental United States, Hawaii and Alaska.  
Outside the U.S. call 714.847.6887.

**Mon-Fri 8:00-5:00 Sat 10:00-3:00, P.S.T.**  
(Closed Sundays and holidays)

### Information you'll need when ordering by Phone:

#### Customer Number

Found on back cover of your catalog above your name, this number allows Classic Industries® to quickly access your information. If you do not have a customer number, a new one will be given to you when placing your order.

#### Billing and Shipping Address

Please have the billing and shipping address available. Credit card orders are verified by name and address before shipping. Your order can be shipped to a different address, provided the cardholder's name and address match the credit card used. You may be asked to contact your credit card company to have the shipping address added to your account.

#### Year and Model of Vehicle

To provide the best possible service, we may require the year and model of your vehicle. This helps verify that the parts you order are correct for your car.

#### Part Numbers

All Classic Industries® products are listed with a part number. If possible, please have the part numbers of the products you're ordering available before calling to make the ordering process faster and more convenient.



## ON-LINE ORDERING

[www.classicindustries.com](http://www.classicindustries.com)

Classic Industries® offers on-line ordering directly through our website. Log on to [classicindustries.com](http://classicindustries.com) and order on-line. On-line ordering is available 24 hours a day 7 days a week for your convenience.



## ORDERING BY MAIL

Mail Your Completed Order Form to:

Classic Industries®  
18460 Gothard St.  
Huntington Beach, CA 92648  
Attention: Order Dept.



## ORDERING BY FAX

TOLL FREE 800-300-3081

In the continental United States, Hawaii and Alaska.  
Outside the U.S call 714.847.6887.

Important: For assistance with your order form, see page entitled "How To Fill Out Your Order Form".

## Service Excellence from the Restoration Leaders!



## You No Longer Have To:

- ✗ Pay excessive fees to protect your merchandise
- ✗ Contact the carrier yourself
- ✗ File a damage claim yourself to have the carrier inspect the damaged items
- ✗ Send the damaged items back at your expense

With Classic Industries® the worry is eliminated!

## PROCEDURE FOR RETURNING SHIPPING DAMAGES

We handle the claim so you don't have to! If any part you receive is damaged during shipping and handling, simply contact our customer service department toll-free at 800.854.1280 within two business days.

After verifying the damage, Classic Industries® will issue a pickup call tag through the carrier that shipped the products. The carrier will pickup the damaged goods from your address and return them to us at no expense to you. After the product has been inspected, our customer service department will send a replacement part.

In order to ensure replacement of damaged products, please return items in their original box and packaging. Failure to do so may result in the claim being denied. Someone must be available at the pickup address to supply the damaged products when the carrier arrives. If the carrier is unable to pickup the products for any reason, the customer may be required to return the products at their expense.

*Note: Some products are excluded from damage call tag pickup. Call a customer service representative for information about products that are not eligible.*

# ENJOY THE BENEFITS!

## Money Back Guarantee



*At Classic Industries®, we take pride in the quality of the products we offer and back it up with a 100% Money Back Guarantee. If for any reason you are not satisfied with a product or purchase, you can return the product within 30 days of receipt for a full refund, credit or exchange.*

Not all restoration parts are created equal. But at Classic Industries®, we research each and every product we sell to make sure our customers are getting the highest quality products in the market. We have decades of experience in product selection and we painstakingly scrutinize every product we offer for quality manufacturing, materials, and craftsmanship before we will offer it in any of our catalogs. Many of our employees are automotive enthusiasts themselves. In fact, many were customers prior to becoming employees, so we understand the needs of the modern classic car enthusiast. Our product procurement specialists have made it their goal to select restoration products that have been manufactured using modern technology and materials with an emphasis on originality, longevity, and attention to detail. What else would you expect from the company that started it all? Classic Industries® is the name you can trust, and we'd like for you to consider us as your partner in restoration. When a company

continually offers a quality product for a reasonable price and backs up every sale with the best customer service in the industry, people come back! That's why Classic Industries® has been the leader in restoration for almost four decades. So, if you haven't already decided for yourself that Classic Industries® is the most logical choice as your restoration parts supplier, then check out our Money Back Guarantee. If for any reason you are not 100% satisfied with a product or purchase, you can return the product within 30 days of receipt for a full refund, credit, or exchange.

- ✓ **Lowest Prices Guaranteed!**
- ✓ **The Finest Quality Reproductions!**
- ✓ **No Fault Product Protection Offer!**
- ✓ **100% Satisfaction or Your Money Back!**



## Price Match Guarantee



**If you find it for less we'll match the price!**

Classic Industries® will match any competitors current advertised price for an identical product. Simply send us a copy of the competitor's current advertised price from a catalog, advertisement or website (with URL) and we'll match the price. The price match guarantee is available at the time the order is placed and for in-stock merchandise only. Price matching will be determined by a competitor's most current retail published price and is limited to competitors within the Restoration Industry.

**Important:** In an effort to provide our retail customers with the most competitive pricing available, we will match our current competitor's pricing. Price matching will be determined by a competitor's most current retail published price and is limited to competitors within the "Restoration Industry". Performance parts and special orders are exempt from price matching policy. Classic Industries® reserves the right to decline price matching if

pricing is deemed to be a special offer, a sale or closeout price, or a non-current price. Competitors sale pricing, inventory reductions, close outs, special promotional offers, etc. may be exempt from the "price match" guarantee. The guarantee is subject to the terms and conditions of Classic Industries® current policies.

Classic Industries® will generally contact competitors to confirm that the published price is current due to market changes, demand or availability. Price matching supersedes all other promotional offers and on sale pricing. If Classic Industries® matches a price from a competitor, additional discounts on that product or products may not apply. If the standard retail price of a product is higher than the competitor's price and an applied discount reduces the price below the competitor's pricing, the now discounted or sale pricing will prevail. We reserve the right to change or revoke this offer at any time without notice. Classic Industries® reserves the right to decline price matching.

## Think Of Us As Your Partner In Restoration!

A restoration can take years! We understand the complications and problems that can occur when ordering precious parts for your project car. If you are like most people, you want perfection. The many different elements that make up a restoration isn't just limited to the parts you install. You sometimes need to rely on other outside elements such as body shops, painters, upholstery specialists and parts suppliers. That's where we come in. We offer the quality parts you want without all the guesswork. We carry one of the largest inventories of restoration products and accessories the market has to offer. What's more, you can rely on our nearly

40 years of experience to help you through the rough spots when you need it. Our tech advisors are always ready and willing to discuss any problem you may have concerning the parts for your vehicle and your restoration. Unlike other companies, we give you knowledgeable sales representatives, one of the largest inventories in the business, quick and efficient delivery, Toll Free ordering, and the experience to back it up. If you're not absolutely 100% satisfied with the products you receive. We'll refund 100% of your money! Classic Industries® - your partner in restoration!



# Form of Payment

# How to Order



## CREDIT CARDS

Classic Industries® accepts *Visa, MasterCard, American Express, Optima, and Discover* for your convenience. When placing your order, be sure to indicate the card holder's name, address, home phone, business phone, credit card number and expiration date and billing address (if different from person placing order). A security code is required for credit card purchases. Please have your credit card readily available when placing your order. Minimum order is \$20.00. New or 1st time customers who are paying by credit card must have the order shipped to the cardholders billing address for the first order. Invalid or non-matching billing addresses could delay your shipment.

## CERTIFIED CHECKS

Classic Industries® will accept certified checks for your mail order. Be sure to include customer number and/or reference invoice number. Contact your bank to issue a certified check in the amount due for your order. All orders paid by certified check are held up to 15 days pending clearance.

## PERSONAL CHECKS

To use personal checks or business checks on prepaid orders, the name, address, and check number must be preprinted on the check. Be sure to include customer number and/or reference invoice number. Only first party checks will be accepted. All orders paid by personal check are held up to 15 days pending clearance.

## MONEY ORDERS/CASHIERS CHECKS

To use money orders or cashiers checks on prepaid orders be sure to include customer number and/or reference invoice number. All orders paid by money order are held up to 15 days pending clearance. Once released the order will leave within 24 hours of clearance.

Make Personal Checks or Money Orders payable to:  
**Classic Industries®**

## PAYPAL

Classic Industries® now accepts payments via PayPal! Simply complete your order over the phone with a customer service representative, get your invoice number and then send your payment to [paypal@classicindustries.com](mailto:paypal@classicindustries.com) through PayPal's "Send Money" feature and select "Goods and Services" for payment reason. Be sure to include your invoice number in the "Special Instructions" tab at checkout for fastest service. Orders are generally shipped within 72 hours or less of payment receipt. Contact our customer service department for additional details.



## MAIL ORDERS

Fill out the order form located in the back section of this catalog. For quick service use your credit card, money order, or cashiers check. Personal checks are held for 15 days from date of receipt pending clearance. All mail orders must be prepaid including freight (when applicable). COD orders through the mail will not be accepted. If you have any questions regarding product information or availability, contact our sales representatives during regular business hours at 800.854.1280.



## ORDER BY PHONE

Classic Industries® employs knowledgeable sales representatives to assist you when placing your order. Our sales representatives are trained to answer your questions regarding restoration and the parts listed in this catalog. Call during regular business hours Mon-Fri 8:00-5:00, Sat 10:00-5:00, PST. Closed Sundays and holidays. Our convenient Toll Free number allows you to place your order with confidence to assure you get exactly what you want when you want it! Inter-continental US. 800.854.1280. Outside US. country code + 1.714.847.6887



**TOLL FREE 800-854-1280**

## FAX YOUR ORDER

Classic Industries® offers a convenient FAX line for customers who have access to a FAX machine. Our FAX is available 24 hours a day 7 days a week for your convenience. Fill out the order form completely and FAX your order. Within US. 800.300.3081. Outside US. country code + 1.714.848.9501



**TOLL FREE 800-300-3081**

## ON-LINE ORDERING

Classic Industries® offers online ordering directly through our website. Log on to [classicindustries.com](http://classicindustries.com) and order online. Online ordering is available 24 hours a day 7 days a week for your convenience.



**WWW.CLASSICINDUSTRIES.COM**

## FOREIGN ORDERS

All foreign orders must be prepaid before the products can be shipped. The Classic Industries® staff will check with the various freight companies that deliver to your country and area to determine the best possible rates available for your order. Once your order is rated, you'll be contacted by e-mail or phone to approve the rate. After approval and payment is received, the order will be shipped. The Shipping & Handling field for foreign orders will state "TBD" (To Be Determined). Rates are subject to change once the order has been packed and is ready to ship. Rates are calculated based on estimations of weight, dimensions and other factors. Should changes in freight costs occur once the order is packed and ready to ship, Classic Industries® will notify the customer immediately before the shipment is sent. If you have any questions or concerns, please direct your inquiries to [info-desk@classicindustries.com](mailto:info-desk@classicindustries.com).

# General Information

## Sales Tax Information

Classic Industries® collects and remits sales tax based on state and local requirements. The sales tax laws have changed due to a Supreme Court ruling in 2018. The appropriate sales tax will be applied to your order and remitted based on your state's requirements. If your order is shipped, or picked up in a specific state that requires sales tax, the appropriate amount will be added to your order.

## Accuracy Of Descriptions

Classic Industries® makes every effort to verify the accuracy of all information published in this catalog. Each item is represented with information that is accurate to the best of our knowledge at the time the catalog is printed. Classic Industries® is not responsible or liable for mistakes, print errors or inaccurate information that may lead to, or result in labor costs or damages to any vehicle under any circumstances.

## Kit Products

All Classic Industries® Parts and Accessories catalogs include kits which contain a variety of products. On occasion we may run out of an item supplied with a kit. If this happens we will generally ship what is in stock and back order the item(s) which are not in stock. You may contact our sales department by phone to verify which items are not in stock at the time the order is placed. The customer may decide whether to accept the partial kit or have the entire kit back ordered until the kit is completed and all the items can be shipped at the same time. If the customer decides to accept partial delivery of the kit, then the full price of the kit will be charged to the customer and the back ordered items will be shipped no charge when they arrive at our warehouse. Customers will be charged the appropriate freight fees when applicable. Cancellation of products from a kit will be accepted at 25% below the actual current retail price of the item. On COD orders the price of the kit is charged in full and the back ordered items are shipped on a COD freight only basis.

## Rights and Lefts

Some items in this catalog are presented as left or right hand products (left side - driver) (right side - passenger). LH or RH sides are determined by sitting in the vehicle, not standing in front of the vehicle.

## Color Matches

Due to multiple manufacturers of products Classic Industries® provides, color variations may occur. Slight color variations are common especially amongst interior products and does not constitute a defect. These products are not eligible for return for this reason.

## Pricing

Prices in this catalog were in effect at the time of printing and supersede all prices in any previous publication. Classic Industries® makes every effort to honor the prices contained herein. However, due to increased costs of manufacturing materials, etc., prices can change. We reserve the right to change prices without notice. For current pricing please contact a Classic Industries® sales representative during normal business hours. Eligibility of products for discounts are subject to change without notice.

## Trademarks and Copyright

Classic Industries® Parts and Accessories catalog copyrighted. No part of this publication including text, photos or illustrations may be reproduced without the prior written permission of Classic Industries®. The following names and/or symbols: Mopar, Dodge, Plymouth, Barracuda, Behaved, Coronet, Challenger, Charger, Cuda, Dart, Duster, Fury, GTX, Hemi, Polara, Road Runner, Six Pack, Super Bee, Scamp, Valiant are registered trademarks of Chrysler Group, LLC and are used for reference purposes only unless specified otherwise.

## Product Availability

Availability of all items in this catalog are subject to change without notice. We reserve the right to discontinue products, services or accessories without notice.

## Shortages

Always check the contents of your delivery to assure all the parts ordered were received. If you are missing any item(s) be sure to check back orders noted on your invoice before calling our customer service department (see back order). If a shortage has occurred, contact our customer service department within 2 working days of delivery to assure a prompt replacement. Classic Industries® assumes no liability after this period.

## ALASKA, HAWAII, GUAM & PUERTO RICO

Orders being shipped to Alaska, Hawaii, Guam or Puerto Rico, are shipped via Ground, Overnight or 2-Day Delivery whenever possible. All orders must be prepaid with credit card, money order, or check. No COD orders are accepted. Rates depend on the items being shipped.

Contact our sales department for exact rates.

**Important:** Promotional shipping offers do not apply to Alaska, Hawaii, Guam, Puerto Rico, Canada or any foreign destination.



## APO/FPO

Parcel post is the only means of shipping to an APO or FPO address. Due to size restrictions the maximum shipping box can be no larger than 72" width and girth combined. All military personnel must write or call to determine what size box will be used for the shipment. Once this is determined, Classic Industries will call or write to let you know if the order can be shipped by Parcel Post, and the correct amount required. All orders that exceed these limitations will be shipped in accordance with customer approval.

## INSURANCE

Each order is charged an insurance fee of \$3.50. This fee will insure the entire order and protect you completely from damages or loss. The order forms located in the rear of this catalog include this fee in the indicated column when your order is being totaled.

## COD ORDERS

COD orders are gladly accepted on all normal ground shipments, excluding truck freight orders. COD orders will require cash only upon delivery of your order. All COD orders are shipped by FedEx. Personal checks, business checks, money orders and certified checks are not accepted. COD orders are not accepted through the mail. COD orders must be placed by phone during regular business hours. The appropriate shipping fees will be added. COD orders are exempt from discounts and free shipping promotion. The customer will pay all appropriate fees in accordance with current policies and freight rates. A fee of \$11.95 per box will be added to all COD orders. Oversize and/or overweight boxes will be charged in accordance with the rate chart located on the order blank. Classic Industries reserves the right to change shipping rates in accordance with rate increases by freight companies. COD orders are limited to \$999.00. If the COD order should be returned to Classic Industries for non-acceptance/non payment, the customer will be responsible to reimburse Classic Industries for any and all freight charges related to the order. In addition, a 25% restocking fee will be applied to the returned products. All outstanding charges must be paid before any additional orders will be accepted.

## SPECIAL RATE SHIPPING FEES/DROP SHIP FEES

Some items we offer may require a mandatory shipping or drop ship fee. This fee may also apply to products sold over the counter at Classic Industries' Showroom location. Contact our sales department for actual additional shipping fees.

**Important:** Products with special rate shipping fees or drop ship fees are excluded from promotional shipping offers.



# General Information

## Back Orders

The invoice located in the packing slip of your order will note any items that were out of stock at the time of shipping. The unavailable items will be back ordered unless otherwise specified on your order form or verbally to a sales representative when placing your order by phone. Back orders are usually shipped when the products arrive at our warehouse without prior notification. Classic Industries will make an effort to contact the customer if the backorder is more than 90 days old. If you wish to cancel a back order, please notify our customer service department immediately. The customer will be responsible for a 25% restocking fee and freight charges if the back order is cancelled or returned after the items are shipped.

## Damage Claims

Always check the contents of your shipment in the presence of the person delivering the merchandise. Should any damage occur, immediately notify Classic Industries' customer service dept. See that all steps necessary will be taken to ensure a prompt replacement of any damaged goods. Accurate instructions will be given on damaged goods replacement. Classic Industries is not responsible if no notification is given within 2 working days of receipt of goods (excluding Sundays and Holidays). Classic Industries will file a claim with the carrier in most cases. If the customer files a claim with the carrier, Classic Industries will not be responsible for replacing damaged products and the customer will be responsible to pay for any replacements until the carrier pays the claim. Any replacement parts due to sales errors or customer errors in ordering will be sent using the same shipping method as the original order when possible. Please follow these instructions to avoid any problems or misunderstandings associated with damaged products and freight claims.

## Refusals

All refused COD orders will be subject to a 25% restocking fee. Classic Industries will consider the entire order cancelled and void with no notification to the customer. The customer will be billed 25% plus all freight charges to and from the destination. Contact our customer service department for more information.

## Policies

All policies in Classic Industries' current catalog supersede any and all policies in any previous catalog or publication.

## EXPRESS SHIPPING

Classic Industries offers Overnight and 2-Day air delivery service in the Continental U.S., Alaska, Hawaii, Guam and Puerto Rico. Pre-payment with a credit card is required before shipments can be sent. Simply call in your order before 2:00 p.m. Pacific Time, Monday-Friday during regular business hours and your Overnight order will arrive the following business day (pending availability). Saturday delivery is available only on Overnight shipping service. For 16:95 fee will be added. Freight products will be shipped 2-Day orders will arrive within 2 business days (pending availability). 3-Day service is available within the contiguous 48 states. Your order will usually leave within 24 hours and will arrive within 3 business days of ship date (pending availability). A \$9.95 service fee for any of these options will be added in addition to shipping fees. Contact our sales department for rates regarding air service delivery. Rates depend on the items being shipped. Some products are charged at dimensional weight as opposed to actual weight. **Important:** Air service does not guarantee your order will arrive on the specified date of delivery. Under normal circumstances, air service is guaranteed. However, due to adverse weather conditions, natural disasters or unforeseen circumstances, there may be delays. Classic Industries is not responsible for deliveries that are delayed. Air service orders are excluded from promotional shipping offers.

## TRUCK FREIGHT

Products in this catalog that require truck freight are usually indicated below the product "Shipped truck freight". This indicates that the product is too large for ground delivery and must be shipped by motor freight. There may be items listed here that are not indicated as truck freight. These items must be pre-paid, including freight charges, before the shipment can be sent. Classic Industries requires a minimum \$125.00 fee for all California orders and minimum \$175.00 fee for all out of state truck shipments. Truck freight rates could be higher depending on products being ordered and the destination. Residential deliveries require an additional \$40.00 fee. Should the customer's delivery require special handling (lift gate service, re-rout, additional freight charges, etc.), any and all additional fees will be billed to the customer's credit card. Acceptance of truck freight shipment is acknowledgment that additional charges will be incurred. Please include a commercial business address whenever possible. For additional information contact our customer service department during regular business hours.

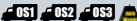
**Important:** Truck freight items are excluded from promotional shipping offers.



## OVERSIZE-OVERWEIGHT

These are the designations for Ground or Standard packages that meet one of the following specifications for billing purposes: Oversize 1 (OS1) designates a combined length and girth exceeding 84", but less than 108". Actual weight is less than 30 lbs, and is billed at 30 lbs. Oversize 2 (OS2) designates a combined length and girth exceeding 108" but less than 130". Actual weight is less than 70 lbs, and is billed at 70 lbs. Oversize 3 (OS3) designates a combined length and girth exceeding 130" but less than 165". A \$40.00 handling fee will be added to all (OS3) orders. Actual weight is less than 90 lbs, and is billed at 90 lbs. We reserve the right to charge Oversize fees on any other containing oversize products, even if it is not indicated in the catalog.

**Important:** Oversize, overweight and dimensional weight items are excluded from promotional shipping offers.



## Sales Errors/Ordering Errors

Classic Industries is not responsible for customer errors or employee sales errors. Every effort is made to insure that the products you are ordering are accurate. Should an error occur, we will make every effort to resolve the issue. Replacement products will be shipped the same method as the original order whenever possible. Classic Industries assumes no responsibility or liability for damages, fees, storage charges, or any other inconvenience that may be associated with sales errors or customer ordering errors.

## Returns

Products may be returned for a full refund on the product, credit or exchange within 30 days of receipt. All returns are subject to a 25% restocking fee after 30 days. Should you need to return a part or refund, exchange or credit, please contact our customer service department for the appropriate authorization number and instructions. Classic Industries will not accept returned goods without prior authorization. Customer will pay freight on all return orders. Allow up to 3 weeks to process refund or credit.

**Important:** Gift certificates have no cash value and must be redeemed for merchandise only. Literature, CDs, videos, printed materials, stencil kits, stripes, electrical parts, gears, wiring harness, switches, etc. are non-returnable. All special order products must be prepaid in full and are non-returnable. No returns on partial kits or sets. There is no guarantee on moving parts on an engine or transmission. Replacement products will be shipped the same method as the original order when possible. If any product is modified, altered, painted, installed or disassembled in any way without Classic Industries' expressed written permission, the item is non-returnable. Classic Industries always recommends professional installation on all products. Any item which has been altered, painted, installed or deemed non-returnable by Classic Industries will be returned to the customer at the customer's expense. Classic Industries is not responsible or liable for labor fees associated with the installation, removal, modification, painting or repair of any product purchased regardless of the circumstances. Classic Industries is not responsible for any damage or discoloration incurred in relation to chemical products being used including cleaners, waxes, polishes, paints, etc.

# Product Index

## A

A-Arm	326
A-Arm Bolt Set	329
A-Arm Bushing	326
AC Air Distributor Duct Vent	425
AC Baffle Seal	230
AC Belt	412-413, 430
AC Blower Motor	422
AC Blower Motor Resistor	423
AC Blower Motor Resistor Pigtail	423
AC Box Cover Hardware	421
AC Center Outlet Duct Adapter	425
AC Compressor	428-429
AC Compressor Bracket	430
AC Compressor Clutch	429
AC Compressor Decal	201
AC Compressor Hose	429
AC Compressor Manifold	429, 431
AC Compressor Mounting Stud	430
AC Compressor Upgrade Set	428
AC Condenser	430
AC Condenser Mounting Bracket	430
AC Condenser to Dryer Hose	431
AC Control Cables	426
AC Delete Cover	422
AC Delete Panel	422
AC Duct Hose	422
AC Duct Center Dash Vent	424
AC Evaporator Duct	201
AC Expansion Valve	431
AC Hose Brackets	429
AC Hose Bubble Crimper	429
AC Hose Clamp	429
AC Hose Clamp Bracket	429
AC Hose Grommet	429
AC Mounting Bolts	317
AC Mounting Nut	317
AC O-Ring Set	431
AC Outlet Assembly	425-426
AC POA Valve Gitting	431
AC POA Valve Retrofit Set	431
AC Receiver Bracket	431
AC Receiver Dryer Fitting	431
AC Receiver/Dryer	431
AC Relay	423
AC Relocation Bracket	430
AC Retro-Fit Set	428, 430
AC Seal	430
AC Service Cap	431
AC Switch Cap	423
AC Tube Foam Seal	430
AC Underhood Hardware Set	431
AC/Heater Control Assembly	426, 428
AC/Heater Control Panel Lens	427
Accelerator Lever Cable	514
Accelerator Pedal	132, 138
Accelerator Pedal Cam Set	133
Accelerator Pedal Bushing	133
Accelerator Pedal Mounting Pin	133
Accelerator Pedal Rod	133
Accelerator Pedal Rod Support	133
Accelerator Pedal Tension Spring	133
Accelerator Pump Cam Set	514
Accelerator Pump Squirters	111
Accelerator Rod Grommet	133
Accelerator Rod Sleeve	133
Accelerator Spring Bracket	133
Accelerator Throttle Lever	133
Accessories Parts Price List	159
Accessory Connector Pack	580
Accessory Drive Belt	412-413
Accessory Wire	582
Accessory, Automotive	142-143
Actuator, Turn Signal	511
Actuator/Cylinder, Convertible Top	287
Actuator Flex-Rod, Shift	549
Actuator Motor, RS Headlamp Door	244, 247
Actuator Sector Gear, Ignition Switch	102
Actuator, Neutral Safety Switch	103
Actuator, Power Door Lock	578
Actuator, Rally Sport Vacuum	244
Adapter, AC Center Outlet Duct	425
Adapter, Air Cleaner	459

Adapter, AT (Deep Pan)	543
Adapter, Bluetooth Receiver	594
Adapter, Distributor	512
Adapter, EFI Fuel Return	518
Adapter, Gauge	83-84
Adapter, Motor Mount	438
Adapter, Rear Main Engine Seal	470
Adapter, Shift Knob	563
Adapter, Steering Wheel	108, 113
Additive, Coolant	415
Adhesive, Emblem	193
Adhesive, Headliner	63
Adhesive, Rear View Mirror	63
Adhesive, Spray	12, 69
Adhesive, Trim	63
Adjustable Electric Fan Thermostat	411
Adjustable Footrest	138
Adjustable Shocks	344
Adjuster, Headlamp	229
Adjuster, Seal Track	38, 40
Adjusting Sleeve, Tie Rod	327
Aerosol Coating	184-186
Air Baffle, Radiator Lower	400
Air Box Lid	461
Air Cleaner	454, 456-461
Air Cleaner Adapter	459
Air Cleaner Element	196-198
Air Cleaner Emblem	456
Air Cleaner Extension, Cowl Induction	455
Air Cleaner Filter Oil	458, 461
Air Cleaner Flame Arrestor	457
Air Cleaner Flange, Cowl Induction	455
Air Cleaner Hose	457
Air Cleaner Lid Seal	457
Air Cleaner Oil & Clean/Degreaser Kit	458, 461
Air Cleaner Open Element Lid	456-457
Air Cleaner Shroud	457
Air Clean Spacer	459
Air Cleaner Wing Nut	457
Air Conditioned Window Decal	201
Air Conditioning Conversion	428
Air Conditioning Line Clamp	421
Air Conditioning Wiring Harness	429
Air Control Front	256-257
Air Deflector Retainer, Front	255
Air Deflector, Front	255
Air Duct, Rear Crankcase Vent	457
Air Extractors, Fender	271
Air Filter Element	458-461
Air Flow Control Cable	424
Air Induction Decal	205
Air Injection Diverter Valve Tee	525
Air Injection Extension Tubes	525
Air Injection Hose	525
Air Injection Plug	525
Air Intake Heat Shield	461
Air Outlet Deflector	426
Air Shock Decal	203
Air Suspension Set	339
Air Vent Shut-Off Elbow Assembly, Side	424
Alternator	492-493
Alternator Bracket	412-413, 494
Alternator Boot	494
Alternator Bracket	495
Alternator Case	493
Alternator Case Conversion	495
Alternator Conversion Wiring Adapter	494
Alternator Conversion Wiring Pigtail	494
Alternator Fan	494
Alternator Mounting Bolt	494
Alternator Pulley	494
Alternator Pulley Nut	494
Alternator Shut-Down Relay Set	581
Alternator Spacer	495
Alternator Stud	329
Alternator Terminal Cap	494
Alternator Terminal Cap Retainer	494
Aluminum Wheel Induction Decal	200
Anchor Plate, Spare Tire Clamp	303
Angle Finder Tool (Suspension)	356
Antenna	93
Antenna Adjust Card	201
Antenna Bezel Nut	93

Antenna Body	93
Antenna Cable	93
Antenna Ground Strap	93
Antenna Location Template	93
Antenna Nut Tool	93
Anti-Theft System	168-169
Apparel	142-143
Arm Rest Base Molding	55
Arm, Center Lid	125
Arm, Windshield Wiper	275
Arm, Windshield Wiper Motor	275
Armrest Drink Holder	126
Armrest Mounting Screws	55
Armrest Panels, Rear Inner Side	47
Armrest Sleeve	55
Armrests	54-55, 126
Ashtary	105
Ashtary Cover Stopper	105
Ashtary Cup Holder	126
Ashtary Housing	105
Ashtary Lamp Bulb	105
Ashtary Lamp Socket	105
Ashtary Lamp Wiring Harness	105
Ashtary Lid	125
Ashtary Well Upholstery	46
Astro Ventilation Conversion	425
Astro Ventilation Dash Emblem	425
Astro Ventilation Window Decal	201
AT Floor Shift Release Button	549
AT Modulator Vacuum Line	545
AT Shift Actuator Lever	546
AT Shift Cable	546-547
Audio Wiring Harness	576
Auto Security	169
Automatic Gearshift Knob	69
Automatic Shift Plate Pattern	548
Automatic Shifter	550
Automatic Transmission Cooler	545
Automatic Transmission Cooler Line	545
Automatic Transmission Fluid	543
Automatic Transmission Filter	543
Automatic Transmission Oil Cooler	545
Automatic Transmission Pan Bolt Set	544
Automotive Literature	158-167
Auxiliary Lamp Relay Set	581
Auxiliary Power Outlet	104
Axle Shaft Lock	356
Axle Shaft, Rear	356
Axle Tube Spring Perches	350

## B

B-Pillar Support Bracket	281
Back Seat Brace	280
Back Window Glass	217
Back-Up Lamp Gasket	240
Back-Up Lamp Housing	240
Back-Up Lamp Lens	236, 240
Back-Up Lamp Switch	103, 560
Back-Up Lamp Switch Harness	576
Back-Up Lamp Switch Mount Set	103, 560
Backing Paper, AC Control Lens	427
Backing Plate, Disc Brake	327
Backing Plate, Heater Control	423
Backing Plate, Rally Sport Headlamp Door	247
Backing Plate, Rear Brake	327
Backing Plate, Shift Lens	129
Baffle, Lifter Valley	463
Baffle, Oil Pan	471
Bail, Brake Master Cylinder Cover	370
Balancer Bolt	442
Bail Flange, Header Collector	526
Bail Joint	326-327
Bail Joint Boot	327
Bail Joint Rivet	329
Bail Joint Spacer	327
Bail Stud, Accelerator Pedal	133
Base, Center Console	122
Base, Door Latch	60
Base, Horseshoe Shifter	549
Battery	564
Battery Box	564-565
Battery Cable	566-567
Battery Cable Bolts	567

INDEX, POLICIES & ORDER FORMS

# Product Index

Battery Cable Clip .....	567	Blower Motor Resistor .....	423	Bolts, Rally Sport Headlamp Hinge .....	243
Battery Cable Cloth Insulator .....	567	Blower Motor, AC/Heater .....	422	<b>Bolts, Starter Mount</b> .....	491
Battery Cable Retainer .....	567	Bluetooth Interface .....	97	Bolts, Tie Rod Sleeve .....	326
Battery Cable Terminal .....	567	Bluetooth Receiver Adapter .....	94	<b>Bolts, Timing Cover</b> .....	443
Battery Cable Tool .....	569	Board, Headliner .....	367	<b>Bolts, Valve Cover</b> .....	447
Battery Carrying Strap .....	568	<b>Body Alignment Shim</b> .....	259, 271, 326	Bolts, Water Neck Mounting .....	419
<b>Battery Charger</b> .....	568	Body Dent Removal Tool .....	312	Bolts, Water Pump .....	416-417
Battery Cleaning Set .....	568	Body Hardware .....	259	Boot and Ring, Floor Shifter .....	552
Battery Cover .....	568	Body Makers Paint .....	170	Boot Kit, Convertible Top .....	285
Battery Cutout Terminal .....	567	Body Mount Bushings .....	337	Boot Snaps, Convertible Top .....	285
Battery Heat Shield .....	569	Body Mount Hardware Set .....	336	Boot, Alternator .....	494
Battery Load Tester .....	568	Body Mounting Plates, Subframe .....	336	Boot, Ball Joint .....	327
Battery Mat .....	568	Body Pan, Convertible .....	280	Boot, Bellhousing To Clutch Fork .....	558
Battery Nut Pliers .....	569	Body Panel, Inner Rear .....	308	Boot, Inner Tie Rod .....	623
Battery Owners Certificate .....	202	Body Plug .....	314	Boot, Rear View Mirror Bracket .....	36
Battery Post Cleaning Tools .....	569	Body Shims .....	314	Boot, Shift .....	130
Battery Post Washer .....	567	Body Side Molding Retainer Screw .....	225	Boot, Steering Column to Floor Rubber .....	110
Battery Quick-Disconnect .....	569	Body Skeleton .....	309	Boot, Tie Rod End .....	326
Battery Relay Tester .....	568	Body Tools .....	312	Bows, Headliner .....	68
<b>Battery Relocation Cable Set</b> .....	564	<b>Bodywork Manual</b> .....	312	Brace, AC Compressor Mounting .....	430
Battery Side Terminal Wrench .....	569	Bolt Ring & Pinion Installation Set .....	357	Brace, Back Seat .....	243
Battery Surge Protector .....	569	Bolt Set, A-Arm .....	329	Brace, Dash Cluster .....	74
<b>Battery Terminal Protectors</b> .....	567	Bolt Set, Automatic Transmission Pan .....	544	Brace, Driveshaft Tunnel .....	335
Battery Terminal Puller .....	569	Bolt Set, Bellhousing .....	555	Brace, Fender .....	271
Battery Terminal Spreader .....	569	Bolt Set, Differential Cover .....	357	Brace, Fender Skirt to Firewall .....	271
Battery Tray .....	565	Bolt Set, Engine .....	462	Brace, Firewall to Floor .....	280
<b>Battery Tray Bolt</b> .....	314, 565	Bolt, Fan Clutch to Water Pump .....	407	Brace, Fuel Pan .....	280
<b>Battery Tray Clamps</b> .....	565	Bolt Set, Fan Spacer .....	407	Brace, Front Floor .....	280
<b>Battery Tray Hold Down Pads</b> .....	565	Bolt Set, Front Bumper Bracket .....	255	Brace, Front Lower Frame .....	336
Battery Tray/Coolant Tank .....	565	Bolt Set, Front End .....	259	Brace, Front Seat .....	280
Bearing Race & Seal Driver .....	329	Bolt Set, Motor Mount .....	437	Brace, Front Steering .....	336
Bearing Ring, 4-Speed Drive Gear .....	559	Bolt, Set, Thermoset Housing .....	457	Brace, Fuel Tank Mounting .....	497
Bearing Set, Rear Axle .....	557	Bolt Set, Traction Bar .....	353	Brace, Instrument Cluster .....	74
<b>Bearing, Clutch Throwout</b> .....	557	Bolt Washer, Door Striker .....	293	Brace, Leaf Spring Bracket .....	299
Bearing, Front Outer Wheel .....	329	<b>Bolt, Alternator Case</b> .....	495	Brace, Quarter Panel .....	282
Bearing, Hydraulic Release .....	557	Bolt, Alternator Mounting .....	494	Brace, Rear Bumper .....	254
Bearing, Lower Steering Shaft .....	110	<b>Bolt, Balancer</b> .....	442	Brace, Rear Seat .....	280
Bearing, Rear Axle .....	356	<b>Bolt, Bellhousing Tray</b> .....	565	Brace, Rear Shock Tower .....	352
Bearing, Roller Pilot .....	559	Bolt, Bellhousing .....	540	Brace, Starter Motor .....	491
<b>Bearings, Thrust</b> .....	343	Bolt, Brake Caliper Bracket .....	376	Brace, Steering Frame .....	336
<b>Bellcrank Pivot Ball</b> .....	560	Bolt, Brake Caliper Hose .....	372	Brace, Sway Bar Mount .....	352
Bellcrank, Clutch .....	560	Bolt, Brake Hold-Off Valve Mounting .....	371	Brace, Tail Panel .....	305
Bellcrank, Rally Sport Headlamp .....	244	Bolt, Brake Line Clamp .....	373	Brace, Under Rear Seat .....	279
Bellcrank Bolt .....	540, 555	Bolt, Brake Line Hose .....	373	Brace, Under Rear Seat .....	283
Bellhousing Cover .....	555	Bolt, Bumper .....	255	Bracket Set, Throttle .....	548
Bellhousing Dowel Pins .....	555	Bolt, Bumper Bracket to Body .....	255	Bracket, AC Compressor .....	430
Bellhousing to Clutch Fork Boot .....	558	Bolt, Bumper Inner Extension .....	255	Bracket, AC Condenser Mounting .....	430
Bellhousing, Transmission .....	555	Bolt, Clutch Pressure Plate .....	558	Bracket, AC Hose .....	429
Belt Buckle .....	150	Bolt, Convertible Top Pivot .....	487	Bracket, AC Hose Clamp .....	429
Belt Conversion, Serpentine .....	440	Bolt, Coolant Crossover Pipe .....	415	Bracket, AC Receiver .....	431
Belt Tensioner .....	413	<b>Bolt, Crankshaft Pulley</b> .....	239	<b>Bracket, AC Relocation</b> .....	430
Belt, AC .....	412-413, 430	Bolt, Door Hinge .....	289	Bracket, Accelerator Spring .....	133
Belt, Accessory Drive .....	412-413	Bolt, Exhaust Manifold .....	524	<b>Bracket, Alternator</b> .....	495
Belt, Alternator .....	412-413, 494	Bolt, Flexplate .....	540	Bracket, Armrest .....	55
Belt, Fan .....	412-413	Bolt, Flywheel to Crankshaft .....	556	Bracket, B-Pillar Support .....	281
Belt, Power Steering .....	322	Bolt, Fuel Tank Mounting .....	313	Bracket, Brake Caliper .....	377
Belt, Serpentine .....	413	Bolt, Fuel Tank Straps .....	497	Bracket, Brake Hose .....	370, 373
Belt, Smog Pump .....	525	Bolt, Hex Head .....	259	Bracket, Brake Lamp Switch .....	137
Belt, Water Pump .....	412-413	Bolt, Hood Hinge .....	266	Bracket, C5 Caliper Conversion .....	377
Bezel, Console Gauge .....	123	Bolt, Hood Latch .....	267	Bracket, Carburetor Mount Linkage .....	514
Bezel, Console Gauge Cover .....	123	<b>Bolt, Horn Mounting</b> .....	121	Bracket, Carburetor Return Spring .....	514
Bezel, Console Switch .....	125	Bolt, Leaf Spring Anchor Plate .....	333	Bracket, Center Bumper to Valance .....	524
Bezel, Convertible Top Switch .....	101	Bolt, License Plate .....	156	Bracket, Clutch Fork Return Spring .....	559
Bezel, Dash .....	101	Bolt, Lower Control Arm .....	329	Bracket, Clutch Master Reservoir .....	558
Bezel, Dash Air Vent .....	425	Bolt, Lower Rear Shock .....	345	Bracket, Clutch Pivot Ball .....	560
Bezel, Dash Clock .....	72	<b>Bolt, Power Steering Bracket</b> .....	321	Bracket, Console Mounting .....	124
Bezel, Dash Knob .....	71	Bolt, Pressure Plate to Flywheel .....	558	Bracket, Console Seat Belt .....	125
Bezel, Defogger .....	101	Bolt, Tie Rod Sleeve .....	327	Bracket, Control Arm Relocation .....	509
Bezel, Door Panel Grab Handle .....	59	Bolt, Rear Leaf Spring Eye .....	350	Bracket, Convertible Top Switch Mounting .....	103
Bezel, Headlamp .....	242	Bolt, Ring & Pinion Set .....	357	Bracket, Cruise Control Servo Mounting .....	512
Bezel, Ignition Indicator .....	102	<b>Bolt, Seat Belt Anchor</b> .....	324	Bracket, Dash Pad .....	71
Bezel, Lower Dash Vent .....	426	Bolt, Steering Box Mounting .....	424	Bracket, Disc Brake Hose/Caliper .....	373
Bezel, Park Lamp Trim .....	233	<b>Bolt, Throttle Lever Arm</b> .....	133, 517	Bracket, Dome Lamp .....	61
Bezel, Quarter Dome Lamp .....	61	Bolt, Tie Rod Sleeve .....	327	Bracket, Electric Fan .....	439
Bezel, Remote Mirror Inner Door .....	295	Bolt, Water Outlet .....	417	Bracket, Engine .....	438
Bezel, Side Marker Lamp .....	235	Bolts and Fasteners .....	314-319	Bracket, Engine Frame .....	437
Bezel, Tail Lamp .....	238	Bolts, Battery Cable .....	567	Bracket, Engine Pull .....	432
Bezel, Trunk Lock .....	306	Bolts, Cylinder Heads .....	462	Bracket, Fan Shroud .....	403
Blade, Windshield Wiper .....	273	Bolts, Ignition Coils .....	524	Bracket, Foam Down Rear Seat .....	261
Bleeder Set, Hydraulic System .....	423	Bolts, Inlet Oil Cracks .....	482	Bracket, Fuel to Radiator Support .....	261
Blower Cutout Relay .....	423	Bolts, Intake Manifold .....	463	Bracket, Front Brake Hose .....	373
Blower Fan Switch .....	423	Bolts, Oil Filter Bypass Valve .....	475	<b>Bracket, Front Bumper</b> .....	254-255
Blower Motor Fan .....	422	Bolts, Oil Pan .....	472	Bracket, Fuel Filter .....	505
Blower Motor Mounting Screw Set .....	422	Bolts, Quick Release Battery Cable .....	567	Bracket, Fuel Line .....	505

# Product Index

Bracket, Glow Box Door Stopper .....	106	Brake Lamp Switch Bracket .....	137	Bumper, Fan Guard .....	403
Bracket, Grill Mounting .....	249	Brake Lamp Switch Retaining Clip .....	137	Bumper, Front .....	252-253
Bracket, Headlamp Rally Sport .....	245	Brake Lamp, Third .....	241	Bumper, Front Door .....	213
Bracket, Headlamp Support .....	230	Brake Line, Bracket .....	373	Bumper, Fuel Door .....	499
Bracket, Heater Hose .....	421	Brake Line Clamp Bolt .....	273	Bumper, Glove Box Door Arm .....	107
Bracket, Ignition Coil .....	482	Brake Line Clip .....	373	Bumper, Header Bow Stop .....	286
Bracket, Interior Rear View Mirror .....	63	Brake Line Fittings .....	363	Bumper, Outer Door Handle .....	292
Bracket, Jack Load Rest .....	303	Brake Line Hose Bolt .....	372	Bumper, Park Lamp .....	253
Bracket, Jack Mast .....	305	Brake Line Shield .....	372	Bumper, Rally Sport Headlamp Door .....	243
Bracket, Kick Down Cable .....	547	Brake Lines .....	338, 374	Bumper, Rear Axle Pinion .....	356
Bracket, Kick Down Switch Mount .....	547	Brake Manual .....	161	Bumper, Replacement Door Handle .....	57
Bracket, License Plate .....	260	<b>Brake Master Cylinder</b> .....	367-369	Bumper, Seat Back .....	40
Bracket, License Plate/Fuel Door .....	499	Brake Master Cylinder Cover .....	370	Bumper, Trunk Lid .....	216
Bracket, Mirror Mounting .....	295	Brake Master Cylinder Cover Bail .....	370	Bumper, Upper Control Arm .....	327, 330
Bracket, Morse Cable .....	513	Brake Master Cylinder Rebuild Set .....	370	Bumperette, Rear .....	252, 253
Bracket, Outer Door Mirror .....	294	Brake Metering Valve .....	371	Bushing Installation/Removal Tool .....	329
Bracket, Park Brake Cable .....	380	Brake Pad Retainer Spring .....	378	<b>Bushing Set, Polyurethane</b> .....	327, 337
<b>Bracket, Pedal</b> .....	139	Brake Pad Spreader Tool .....	381	Bushing Set, Rally Sport Headlamp .....	244
Bracket, Power Steering .....	321	Brake Pad Trim Plate .....	135	Bushing, Accelerator Pedal .....	133
Bracket, Power Steering Adjuster .....	321	Brake Pads .....	363, 378	Bushing, Carburetor & Throttle Arm Linkage .....	516
Bracket, Power Steering Pump Cradle .....	321	Brake Pedal .....	136-137	Bushing, Clutch Pedal Pushrod .....	559
Bracket, Proportioning Valve .....	371	Brake Pedal Clevis .....	137	Bushing, Control Arm .....	326-327, 331, 337, 351
Bracket, Quick Release License Plate .....	261	Brake Pedal Pad .....	135	Bushing, Convertible Top Pivot .....	287
Bracket, Radio Support .....	96	Brake Pedal Rod Extension .....	377	Bushing, Front Caliper O-Ring .....	376
Bracket, Rear Brake Hose .....	373	Brake Proportioning Valve Bleed Tool .....	382	Bushing, Manual Transmission Pilot .....	559
Bracket, Rear Bumper .....	254	Brake Rotor .....	355, 362-363, 375	Bushing, Pedal .....	137
Bracket, Rear Lower Adjuster .....	245	Brake Rotor Drum .....	329	Bushing, Rear View Mirror .....	63
Bracket, RS Grill Vertical Divider .....	250	Brake Shoe Guide Plate .....	377	Bushing, Torque Arm Mount .....	352
Bracket, RS Headlamp Bellcrank Shaft/Lever .....	244	Brake Shoe Retaining Pin .....	377	Bushings, Radiator Support .....	261
Bracket, RS Limit Switch .....	244	Brake Shoe, Drum .....	378	Bushings, Sway Bar .....	333
Bracket, Seat Shelf Pan .....	298	Brake Shoe, Park .....	379	Button, Auto Floor Shift Release .....	549
Bracket, Shift Cable .....	547	Brake Spring Hiers .....	381		
<b>Bracket, Shift Cable Support</b> .....	546	Brake Spring Removal Tool .....	381		
Bracket, Shift Mount .....	560	Brake System Bleeder Tool .....	381		
<b>Bracket, Speed Pump</b> .....	525	Brake Tube Bending Tool .....	382		
Bracket, Speed Warning Cable .....	77	Brake Warning Lamp Socket & Wire .....	373		
Bracket, Steering Column .....	110	Brake Wheel Cylinder, Drum .....	376		
Bracket, Stop Lamp .....	137	Brake, Parking .....	139		
<b>Bracket, Throttle Cable</b> .....	514, 516-517	Brake/Clutch Pedal Pin .....	137		
<b>Bracket, Throttle Kick Down Cable</b> .....	517	Brakes & Parts Cleaner .....	443		
Bracket, Throttle Valve Cable .....	547	Breather, Valve Cover .....	446		
Bracket, Tilt Steering Column .....	325	Bruhes, Start Motor .....	491		
Bracket, Traction Bar .....	353	Bucket Seat Back Panel .....	38		
Bracket, Transmission Drive Shaft .....	513	Bucket Seat Frame .....	38		
Bracket, Windshield Washer Jar .....	274	Bucket Seat Exterior .....	38		
Brackets, Brake Booster .....	370	<b>Bucket Seat Hinge Cover</b> .....	38		
Brackets, Bumper Cover .....	255	Bucket Seat Side Bracket Cover .....	38		
Brackets, Leaf Spring Mounting .....	350	Bucket Seat Support Springs .....	37		
Brackets, Park Lamp Housing .....	233	Bucket Seats .....	33-36		
Brackets, Rally Sport Headlamp Door .....	243	Buckle Cover, Seat Belt .....	42		
Brackets, Seat .....	36	Build Sheet, New Vehicle .....	204		
Brackets, Sway Bar .....	333	Bulb Covers, Light .....	92		
Brackets, Rear Bumper Guard .....	253	Bulb, Ashtray Lamp .....	105		
<b>Brake Adjustment Tool</b> .....	381	Bulb, Clock Lamp .....	75		
Brake Backing Plate Gasket .....	377	Bulb, Console Auto Trans Indicator .....	126		
Brake Bleeder Screw .....	375	Bulbs, Driving Lamp .....	238, 241		
Brake Bleeder Screw Dust Cap .....	375	Bulb, Fog Lamp .....	234		
Brake Bleeder Screw Valves .....	381	Bulb, Gauge Lamp .....	92		
Brake Bleeder Wrench Tool .....	381	Bulb, Glove Box Lamp .....	107		
<b>Brake Booster</b> .....	369	<b>Bulb, Headlamp</b> .....	227-228		
Brake Booster Brackets .....	370	Bulb, Instrument Panel .....	102		
Brake Booster to Firewall Nut .....	370	Bulbs, Lamp .....	228, 231		
Brake Cable Guide .....	380	Bullet Outer Door Mirror Glass .....	294		
Brake Caliper .....	376	Bump Stop Set, Front (Polyurethane) .....	330		
Brake Caliper Brackets .....	377	Bump Stop Spacer .....	350, 384		
Brake Caliper Conversion Bracket .....	377	Bumper Bolt .....	255		
Brake Caliper Hose Bolt .....	372	Bumper Brace .....	258		
Brake Caliper Paint .....	382	Bumper Bracket, Front Set .....	255		
Brake Caliper Piston .....	376	Bumper Bracket Cushion, Front Inner .....	255		
<b>Brake Combination Valve</b> .....	371	Bumper Bracket to Body Bolt .....	255		
<b>Brake Conversion Set</b> .....	358-367	Bumper Cover Brackets .....	255		
Brake Cylinder Hone Tool .....	381	<b>Bumper Cover, Rear</b> .....	253, 308		
Brake Distribution Block .....	371	Bumper Decal, Rear .....	210		
Brake Drum .....	375	Bumper Fascia, Front Set .....	253		
Brake Flex Hose .....	372	Bumper Filler Panel .....	255		
<b>Brake Fluid</b> .....	382	Bumper Inner Extension Bolt .....	255		
Brake Hardware Set .....	377	Bumper Jack Assembly .....	303		
Brake Hold-Off Valve Mounting Bolt .....	371	Bumper Sticker .....	151		
Brake Hose Bracket .....	370	Bumper Strips .....	215		
Brake Hose Strap .....	375	Bumper to Valve Bracket, Center .....	253		
Brake Hose Tee Fitting .....	373	Bumper, Clutch Pedal Return .....	137		
Brake Hose, Stainless Steel .....	372	<b>Bumper, Console Door</b> .....	125		
Brake Lamp Relay Set .....	581	Bumper, Door Glass Stop .....	221		
Brake Lamp Switch .....	137	Bumper, Door Window Stop .....	221		
		Bumper, Fan Guard .....	403		
		Bumper, Front .....	252-253		
		Bumper, Front Door .....	213		
		Bumper, Fuel Door .....	499		
		Bumper, Glove Box Door Arm .....	107		
		Bumper, Header Bow Stop .....	286		
		Bumper, Outer Door Handle .....	292		
		Bumper, Park Lamp .....	253		
		Bumper, Rally Sport Headlamp Door .....	243		
		Bumper, Rear Axle Pinion .....	356		
		Bumper, Replacement Door Handle .....	57		
		Bumper, Seat Back .....	40		
		Bumper, Trunk Lid .....	216		
		Bumper, Upper Control Arm .....	327, 330		
		Bumperette, Rear .....	252, 253		
		Bushing Installation/Removal Tool .....	329		
		<b>Bushing Set, Polyurethane</b> .....	327, 337		
		Bushing Set, Rally Sport Headlamp .....	244		
		Bushing, Accelerator Pedal .....	133		
		Bushing, Carburetor & Throttle Arm Linkage .....	516		
		Bushing, Clutch Pedal Pushrod .....	559		
		Bushing, Control Arm .....	326-327, 331, 337, 351		
		Bushing, Convertible Top Pivot .....	287		
		Bushing, Front Caliper O-Ring .....	376		
		Bushing, Manual Transmission Pilot .....	559		
		Bushing, Pedal .....	137		
		Bushing, Rear View Mirror .....	63		
		Bushing, Torque Arm Mount .....	352		
		Bushings, Radiator Support .....	261		
		Bushings, Sway Bar .....	333		
		Button, Auto Floor Shift Release .....	549		

## C

C-Clip Axle .....	356
C-Clip, Door Handle .....	57
Cable and Housing, Kick Panel .....	43
Cable Equalizer, Parking Brake .....	380
Cable Shift Control Set .....	108
Cable Tension Spring, Park Brake .....	580
Cable, Accelerator Lever .....	314
<b>Cable, Antenna</b> .....	93
<b>Cable, Battery</b> .....	564, 66-667
Cable, Battery Cloth Insulator .....	380
Cable, Convertible Top Hold Down .....	286
Cable, Convertible Top Release .....	287
Cable, Hood Release .....	267
<b>Cable, Kick Down</b> .....	517, 548
Cable, Kick Panel Vent .....	43
Cable, Park Brake View Mirror .....	379
Cable, Seat Release .....	40
Cable, Speedometer .....	77
Cable, Throttle .....	516
Cable, Transmission Shifter .....	546
Cable, Transmission Throttle Valve Control .....	548
Cables, AC Control .....	376
Caliper Bracket Bolt .....	372
Caliper Inlet Line, Front Disc .....	372
Caliper Mounting Pin .....	377
Caliper Repair Set .....	376
Caliper, Brake .....	376
Cam Bearing Installation Tool .....	374
Cam Set, Accelerator Pump .....	516
<b>Camber Shim Track Set</b> .....	332
Camshaft .....	466-467
Camshaft Gear Drive .....	443
Camshaft Installation Tool .....	432
Camshafts Manual .....	61
Canceling Cam, Turn Signal .....	61
Canister, Oil Filter .....	115
<b>Canvas Top Cleaner</b> .....	174
Cap / Hat .....	140-144
Cap, AC Service .....	431
Cap, AC Switch .....	423
Cap, Distributor .....	480-481
Cap, Front Wheel Bearing Grease .....	329
Cap, Fuel Filler .....	498
Cap, Horn .....	120
Cap, Oil Seal .....	446
Cap, Oil Fill .....	446
<b>Cap, Power Steering</b> .....	321
Cap, Radiator .....	401-402
Cap, Radiator Overflow Jar .....	402
Cap, Shock Absorber .....	345

# Product Index

Cap, Vacuum .....	512	Chisel Tool, Seam Buster .....	312	Clips, Dash Carrier .....	72
Cap, Valve Stem .....	384	<b>Chisel Tool, Spot Weld</b> .....	312	Clips, Door Panel .....	54
Cap, Windshield Washer Jar .....	274	Choke Assembly .....	515	Clips, Fan Shroud .....	403
Cap, Yenko Rally Wheel .....	387	Choke Cable, Manual .....	515	Clips, Headliner Molding .....	65
Car Care Products .....	171-177	Choke Cable, Manual Mount Hardware .....	515	Clips, Retaining .....	255
Car Cover .....	4-5	Choke Coil, Thermostatic .....	514	Clips, Weatherstrip .....	216
Car Cover Clamps .....	5	Choke Thermostat Mounting Screw .....	515	Cluck Conversion, Quartz .....	75
<b>Carburetor</b> .....	307-309	<b>Cigarette Lighter</b> .....	104	Cluck Lamp Bulb .....	75
Carburetor & Throttle Arm Linkage Bushing .....	511	<b>Cigarette Lighter Heating Element</b> .....	104	Cluck Lens, Dash .....	75
Carburetor Accelerator Pump Squitters .....	511	<b>Cigarette Lighter Knob</b> .....	104	Cluck Reset Knob .....	75
Carburetor Adapter .....	512	<b>Cigarette Lighter Retainer</b> .....	104	Cluck Wiring Harness .....	131
Carburetor Air Cleaner Gasket .....	510	<b>Circuit Add On Isolator</b> .....	580	Cluck, Dash .....	79
Carburetor Ball Stud Set .....	514	Circuit Add On Wiring .....	580	Cluck, Wall .....	152
Carburetor Ball Studs .....	517	Clamp Plate, Steering Column .....	110	Cluck/Thermometer .....	152
Carburetor Calibration Set .....	511	Clamp, AC Cover .....	421, 429	Clutch Adjustment Rod .....	559
Carburetor Cover .....	459, 513	Clamp, Car Cover .....	5	Clutch Assembly .....	556-557
Carburetor Float Bowl Screw .....	513	<b>Clamp, Distributor Hold Down</b> .....	478	Clutch Bellcrank .....	560
Carburetor Fuel Line .....	506	Clamp, Evaporator Core Outlet Tube .....	430	Clutch Bellcrank Felt Seal .....	560
Carburetor Gasket .....	510	Clamp, Exhaust .....	527	Clutch Bellcrank Pivot Set .....	560
Carburetor Hardware .....	510	Clamp, Fuel Tank Neck/Sleeve .....	498	Clutch Fork Pivot Ball .....	558
Carburetor Heat Shield .....	512-513	Clamp, Heater Core .....	421	Clutch Fork Pivot Stud .....	558
Carburetor Linkage Plate .....	513	Clamp, Heater Hose .....	421	<b>Clutch Fork Return Spring</b> .....	558-559
Carburetor Main Body .....	508	<b>Clamp, Line</b> .....	489	Clutch Fork Return Spring Bracket .....	559
Carburetor Main Jets .....	511	Clamp, PCV Valve .....	445	Clutch Linkage .....	558-559
Carburetor Manuals .....	164	Clamp, Power Steering Return Hose .....	323	Clutch Master Cylinder .....	558
Carburetor Mount Linkage Bracket .....	514	Clamp, Radiator Hose .....	403	Clutch Master/Slave Cylinder .....	557
Carburetor Needle and Seat .....	513	Clamp, Snipe Pushing Hose Tower .....	225	Clutch Reservoir .....	558
Carburetor Power Valve .....	511	Clamp, Steering Column Strap .....	109	Clutch Pedal Pad .....	135
Carburetor Rebuild Set .....	510-511	Clamp, Wiring Harness .....	269, 383	Clutch Pedal Pad Trim Plate .....	135
Carburetor Return Spring .....	514	Clamps, Battery Tray .....	565	Clutch Pedal Pushrod Bushing .....	559
Carburetor Return Spring Bracket .....	514	<b>Clamps, Fuel Hose</b> .....	504	Clutch Pedal Return Bumper .....	559
Carburetor Rod Clip .....	513	<b>Clamps, Vacuum Hose</b> .....	504	Clutch Pivot Ball Bracket .....	560
Carburetor Spacer .....	513	Clay Bar Kit .....	172	Clutch Reservoir Bracket .....	558
Carburetor Stud .....	514	Clean Park Mat .....	178	Clutch Pushrod .....	559
Carburetor Throttle Stud .....	517	Cleaner, Brakes & Parts .....	382	Clutch Pushrod Boot .....	558
Carburetor to Air Cleaner Stud .....	457	<b>Cleaner, Canvas Top</b> .....	174	Clutch Pushrod Retainer Clip .....	559
Carburetor Wedge Plate .....	513	Cleaner, Tire & Wheel .....	394	Clutch Release Fork .....	558
Cargo Area Side Carpet Set .....	8	<b>Cleaner, Upholstery</b> .....	174	Clutch Reservoir Bracket .....	558
Carpet .....	6-8	Cleaner, Vinyl Floor .....	175	Clutch Rod Cover/Seal .....	558
Carpet Dye .....	184	Cleaner, Wheel & Tire .....	137	<b>Clutch Throwout Bearing</b> .....	557
Carpet Firewall Guard .....	9	Clevis Pin, Master Cylinder .....	175	<b>Clutch Tool</b> .....	557
Carpet Underlay .....	7-8	Clip, Retaining, Tail Lamp .....	238	Clutch, AC Compressor .....	407
Carpet, Cargo Area Side .....	8	Clip, Battery Cable .....	567	<b>Clutch, Air</b> .....	429
Carpet, Door Panel .....	52	Clip, Brake/Lamp Switch Retaining .....	567	Clutch, Coat Hanger Hook .....	65
Carpet, Fold Down Rear Seat .....	8	Clip, Brake Line .....	573	Coil Cover .....	483
Carpet, Inner Door Panel .....	8	Clip, Carburetor Rod .....	513	Coil Pack Shield .....	452
Carpet, Trunk .....	303	Clip, Clutch Pushrod Retainer .....	559	Coil Spring Decal .....	203
Carrier Panel, Instrument .....	72-73	Clip, Console Seat Belt .....	125	Coil Spring Insulator, Front .....	343
Case, Evaporator Core Outlet .....	421	Clip, Convertible Top Binding End .....	285	Coil Spring Mount .....	337, 343
Case, Instrument Cluster .....	74	Clip, Convertible Top Boot Mounting .....	287	Coil Spring Spacer Front .....	343
Cast Iron Manifold Dressing .....	522	Clip, Convertible Top Hose .....	287	Coil Springs .....	342-343
Catalytic Converter Decal .....	202	Clip, Convertible Well Molding .....	224, 286	Coil Wire, Ignition .....	483
<b>Catch Can, Oil</b> .....	474	Clip, Dash Pad .....	71	Coil, Ignition .....	481-483
Catch Plate, Glove Box .....	106	Clip, Dome Lamp Wiring .....	61	Coilover Conversion Brackets .....	344
Catch, Fold Down Rear Seat Latch .....	40	Clip, Door Inside Locking Rod .....	293	Coilover Mount Plate Bolt .....	344
Catch, Seat Back .....	306	Clip, Door Latch Rod .....	293	<b>Coilover System</b> .....	339, 344, 347-348
Catch, Trunk Lid .....	306	Clip, Door Lock Rod Retaining .....	293	Coin Holder, Console .....	125
<b>Center AC Outlet</b> .....	424-426	<b>Clip, Door Lock Spring</b> .....	293	Cold Air Intake .....	461
Center Armrest .....	126	Clip, Firewall Pad Retainer .....	10	Cold Start Delete Set .....	524
Center Bumper to Valance Bracket .....	254	Clip, Fuel Line .....	506	Color Bar, Radio .....	97
Center Cap, Steering Wheel .....	114	Clip, Glove Box .....	107	Column Lock Plate Retainer .....	110
Center Cap, Wheel .....	384, 390-392, 394	Clip, Headliner Mounting .....	68	Column Shift Indicator .....	108
Center Console .....	122	Clip, Headliner Trim .....	68	Column Shift Indicator Lens .....	108-109
Center Console Base .....	122	Clip, Heater Box Control Cable .....	427	<b>Column Shift Lever Knob</b> .....	549
Center Dash Air Outlet Screw .....	425	Clip, Heater Control Lens .....	427	Column Shift Linkage Set .....	552
Center Dash Panel .....	73	Clip, Heater Core Mounting .....	420	Combination Valve, Brake .....	371
Center Dash Panel Retainer .....	73	Clip, Hood Latch Release Cable .....	267	Compressor, Tire Tester .....	425
Center Drag Link .....	326	Clip, Kick Down Rod .....	244	<b>Compressor, AC</b> .....	428-429
<b>Center Grill</b> .....	248-251	Clip, Oil Pan Battery Cable .....	472	Concourse Detail Decal Set .....	203
Center Hood Adjustment Set .....	268	Clip, Outer Door Handle Spring .....	292	Condenser Insulator .....	431
<b>Center Rail, T-Top</b> .....	283	Clip, Park Brake Cable Retainer .....	370	Condenser, AC .....	430
Center Trunk Floor Pan .....	304	Clip, Park Brake Lamp Switch .....	380	Condenser, Ignition .....	481
Certificate, Battery Owner .....	202	Clip, PCV Hose .....	445	Connecting Rod, Convertible Bow .....	281
Certificate, Warranty .....	202	Clip, Rally Sport Actuator Pin .....	224	Connector Tee, Washer Hose Spray .....	274
Chambered Exhaust Hanger .....	531	Clip, Rally Sport Molding .....	225	Connector, Heater Diverter Valve Link .....	422
Chambered Exhaust System .....	531	<b>Clip, Retaining T-Top</b> .....	214	<b>Connector, Knock Sensor</b> .....	576
Charcoal Canister, Fuel Vapor .....	504	Clip, Rocker Panel Molding Installation .....	225	Connector, Oil Filter Fitting .....	475
<b>Chassis &amp; Suspension Manual</b> .....	167	Clip, Shift Knob Attachment .....	549	Connector, Park Brake Cable .....	310
Chassis Bolt Set .....	34-35	Clip, Shift Rod Retainer .....	560	Connector, Printed Circuit Board .....	75
Chassis Reinforcement, Convertible .....	335	Clip, Speedometer Drive Gear .....	77	<b>Connector, Turn Signal Switch</b> .....	111
Chassis Wiring Harness .....	571-572	Clip, Tail Lamp Wiring .....	238	Connector, Vent Duct .....	424
Chassis-Max Handle Bars .....	334	Clip, Throttle Solenoid Retaining .....	455	Connectors, Drip Rail Molding .....	224
Check Valve/Filter Assembly, Reserve .....	245	Clip, Trunk Wire Gutter .....	298	Console .....	122
Cherrywood Dash Plate .....	73	<b>Clip, Wire Harness Retainer</b> .....	573		



# Product Index

Console Ashtray .....	105	Convertible Inner Header Molding .....	287	Cover, Convertible Rear Quarter Access .....	221
Console Ashtray Cover .....	125	Convertible Manual Latch Mounting Bolts .....	287	Cover, Convertible Top Motor .....	287
Console Ashtray Lid .....	125	Convertible Pillar Post Molding .....	223	Cover, Dash .....	71
Console Ashtray Lid Hinge Pin .....	125	Convertible Pillar Post Weatherstrip .....	286	Cover, Differential .....	71
Console Ashtray Lid Spring .....	125	Convertible Power Top Wiring Harness .....	286	Cover, Engine .....	453
Console Center Shift Plate .....	129	Convertible Rain Gutter .....	286	Cover, Firewall Relay .....	576
Console Clock .....	123	Convertible Rear Inner Body/Trunk Hinge .....	299	Cover, Flywheel .....	542
Console Coin Holder .....	125	Convertible Rear Quarter Access Cover .....	221	Cover, Fog Lamp .....	241
Console Door Bumper .....	125	Convertible Rear Quarter Trunk Divider .....	280	Cover, <b>Crimper</b> .....	253
Console Door Latch .....	125	Convertible Rear Speaker Housing .....	99	Cover, Fuse Panel .....	71, 80
Console Forward Plate Insert .....	128	Convertible Side Wall Panel, Rear .....	47	Cover, Harmonic Balancer .....	442
Console Gauge .....	123	Convertible Tackling Strip .....	287	Cover, Headlamp .....	241
Console Gauge Base .....	123	Convertible Tonneau Cover .....	258	Cover, Headrest .....	20, 21
Console Gauge Bezel .....	123	Convertible Top .....	284	Cover, Ignition Coil .....	452, 482
Console Gauge Connector .....	123	Convertible Top Actuator Cylinder .....	285	Cover, Ignition Truck Key .....	291
Console Gauge Conversion Wiring Harness .....	31	Convertible Top Binding End Clip .....	285	Cover, Lock Housing .....	110
Console Gauge Cover Bezel .....	123	Convertible Top Boot Kit .....	285	Cover, <b>Lock Plate</b> .....	110
Console Gauge Installation Screws .....	123	Convertible Top Boot Mounting Clip .....	285	Cover, Lower Dash Steering Column .....	73
Console Gauge Lamp Bulb .....	123	Convertible Top Boot Snaps .....	285	Cover, Lower Steering Column .....	74
Console Gauge Lens .....	123	Convertible Top Boot Storage Bag .....	285	Cover, Master Cylinder .....	370
Console Gauge Mounting Plate .....	123	Convertible Top Bow Trim Panel .....	201	Cover, Oil Filter .....	475
Console Gauge Oil Pressure Line .....	123	Convertible Top Decal .....	201	Cover, Oil Pump .....	471
Console Gauge Pod .....	123	Convertible Top Decal .....	201	Cover, <b>Pedal Pad</b> .....	132-134
Console Gearshift Bushing .....	549	Convertible Top Frame Pivot Bolts .....	287	Cover, Radiator Filler .....	400
Console Glove Box .....	126	Convertible Top Frame Rubber Stoppers .....	286	Cover, Rally Sport Headlamp Door .....	249
Console Lamp Lens, Rear .....	129	Convertible Top Header Bow .....	286	Cover, Rear Radio Speaker .....	99
Console Latch & Button .....	125	Convertible Top Header Leader Hose .....	287	Cover, Rear Coolant Thermostat .....	512
<b>Console Lid</b> .....	124	Convertible Top Hold Down Cable .....	286	Cover, Seat Belt Buckle .....	42
Console Lid Arm .....	125	Convertible Top Hydraulic Hose .....	287	Cover, Shifter .....	553
Console Lid Hinge .....	124	Convertible Top Latch .....	286-287	Cover, Spare Tire .....	302
Console Lid Spring .....	124	Convertible Top Manual .....	160	Cover, Steering Wheel .....	115
Console Mount Hardware Set .....	123-124	Convertible Top Motor .....	287	Cover, Tail Lamp .....	444
Console Rear Lamp Lens .....	61	Convertible Top Motor Cover .....	287	Cover, Timing .....	542
Console Seal Cover .....	130	Convertible Top Motor Grommet .....	287	Cover, Torque Converter .....	241
Console Seat Belt Bracket .....	125	Convertible Top Pad .....	286	Cover, Trunk Lid .....	303
Console Seat Belt Clip .....	125	Convertible Top Pivot Bolt .....	287	Cover, Turn Signal .....	241
Console Shift Plate .....	129	Convertible Top Pivot Bushing .....	287	Cover, Vacuum Advance .....	479
Console Shift Plate Trim .....	129	Convertible Top Pump Assembly .....	287	Cover, Valve Cover Cleaner Hose .....	448-452
Console Shift Plate Insert .....	128	Convertible Top Pump Cover .....	287	Cover/Seal, Clutch Rod .....	558
Console Shift Plate Screw .....	127	Convertible Top Release Cable .....	287	<b>Cowl Hood Scoop</b> .....	264
Console Shift Plate Slider .....	129	Convertible Top Seal .....	215	Cowl Induction Air Cleaner .....	454
Console Shifter Button Return Spring .....	124	Convertible Top Switch .....	102	Cowl Induction Air Cleaner Extension .....	455
Console Storage Tray .....	125	Convertible Top Switch Bezel .....	101	Cowl Induction Air Cleaner Flange .....	455
Console Switch Bezel .....	125	Convertible Top Switch Housing .....	102	Cowl Induction Air Cleaner Hose .....	455
Console Trim Plate .....	127	Convertible Top Switch Mounting Bracket .....	102	Cowl Induction Flapper Screen .....	455
Console, Cup Holder .....	126	Convertible Top Tack Strip .....	285	Cowl Induction Hood Frame Screw .....	455
Contacts, Horn Button .....	121	Convertible Well Liner .....	286	Cowl Induction Hood Grommet .....	455
Control Arm .....	326, 330-331, 351	Convertible Well Molding .....	224, 286	Cowl Induction Hood to Flange Seal .....	455
Control Arm Bushing .....	327, 330	Convertible Well Molding Clip .....	224, 286	Cowl Induction Relay .....	455
Control Arm Bushing .....	326-327, 331, 337, 351	Convertible Windshield Header Moldings .....	286	Cowl Induction Screen .....	455
Control Arm Relocation Bracket .....	352	Cool-Air Tube Heat Shield .....	461	Cowl Induction Solenoid .....	455
Control Cable, Air Flow .....	424	Coolant Additive .....	411, 415	Cowl Induction Solenoid Switch .....	455
Control Clip, Kick Panel Outlet .....	434	Coolant Bypass Hose .....	404	Cowl Induction Throttle Arm .....	455
Control Lever, Heater .....	427	Coolant Bypass Set, Throttle Body .....	415	Cowl Induction Valve Frame .....	455
Control Set, AC/Heater .....	426, 428	Coolant Crossover Pipe .....	415	Cowl Induction Valve Frame Seal .....	455
Control Set, Cable Shift .....	408	Coolant Crossover Pipe Bolt .....	415	Cowl Induction Valve Retainer .....	455
Conversion Crossmember, Transmission .....	438	Coolant Filter .....	415	Cowl Induction Wiring Harness .....	455
Conversion Relay, H4 Headlamp .....	228	<b>Coolant Hose Adapter</b> .....	404	Cowl Panel .....	272
Conversion Rod, Powerglide Shifter .....	546	Coolant Level Module .....	401	Cowl to Hood Weatherstrip .....	269
Conversion Set, AT Overdrive Detent .....	547	<b>Coolant Level Sensor</b> .....	401	Cowl Top Vent Grill Panel .....	272
Conversion Set, LS Engine .....	438	Coolant System Protector .....	411	Cowl Top Vent Grill Screen .....	272
Conversion Set, Mechanical Speedometer .....	541	Coolant Temperature Sensor .....	423	Cowl Vent, Hood .....	272
Conversion Set, Power Steering .....	324	Cooler Line, Automatic Transmission .....	545	Cowl/Vent, Hood .....	272
Conversion Set, Power Window .....	578	<b>Cooler, Automatic Transmission</b> .....	545	Cowl/Windshield Frame Assembly .....	272
Conversion Set, Rally Sport .....	246-247	Cooling Fan Blade .....	406	Crankcase Evacuation System .....	445
Conversion Set, Shifter .....	547	Cooling Fan Control .....	411	Crankcase Vent Filter .....	457
Conversion Wiring Harness, Console Gauge .....	131	Cooling Fan Shutdown Kit .....	411	Crankcase Vent Tube .....	457
Conversion, Cross Member Induction .....	507	Cooling Fan Switch .....	413	Crankshaft Oil Seal .....	439, 457
Conversion, Disc Brakes .....	357-367	<b>Cooling Fan, Radiator</b> .....	406	<b>Crankshaft Pulley Bolt</b> .....	439
Conversion, Electric Kick Down .....	548	Cooling System Decal .....	198	Crankshaft Tool .....	432
Conversion, Leaf Spring .....	350	Cooling System Zinc Anode .....	410	Crankshaft Turning Socket .....	432
Conversion, Manual Brake .....	368	Core Support To Radiator Seal .....	261	Crimp Tool .....	486
Conversion, Manual Transmission .....	555	Corner Mount, Front Bumper .....	255	Cross Ram Carburetor .....	507
Conversion, Power Door Lock .....	578	Corner Stiffener, Quarter Panel Trunk Opening .....	305	Cross Ram Fuel Line .....	507
Conversion, Tilt Steering Column .....	325	Counter Stool .....	150	Cross Ram Induction Conversion .....	507
Converter, Torque .....	540	<b>Coupling Link, Steering</b> .....	324	Crossmember, Torque Arm .....	352
Convertible Body Pan .....	280	Courtesy Lamp Wiring Harness .....	107	Crossmember, Transmission .....	438, 539, 555
Convertible Bow Connecting Rod .....	287	Courtesy Lamp, Under Dash .....	107	Crossover Pipe, Exhaust .....	526
Convertible Basis Reinforcement .....	335	Cover, AC Drive Weatherstrip .....	423	Cruise Control Instructer .....	20
Convertible Cover Retaining Pin .....	287	Cover, Billhousing .....	555	Cruise Control Servo Mounting Bracket .....	110
Convertible Door Alignment Wedge .....	289	<b>Cover, Bucket Seat Hinge</b> .....	38	Cruise Control System .....	110
Convertible Driveshaft Tunnel Brace .....	335	Cover, Bucket Seat Side Bracket .....	38	Cruise Control Wiring Harness .....	577
Convertible Header Weatherstrip .....	215	Cover, Console Ashtray .....	125	Crush Sleeve, Pinion Gear .....	356
Convertible Headliner .....	285	Cover, Console Seal .....	130	Cup Holder Consoles .....	126

# Product Index

Cup Holder, Armrest .....	126	Dimmer Switch, Instrument Panel .....	82	Door Lock Knob .....	55-56
Cup Holder, Ashtray .....	126	Dipstick Tube, Engine Oil .....	473	Door Lock Knob Ferrule .....	56
Cupholder, Front Inner Bumper Bracket .....	255	Dipstick, Engine Oil .....	473	Door Lock Pawl .....	201
Cylinder Head Bolt, Cam .....	462	Dipstick, Transmission .....	544	Door Lock Pillar Seal .....	216
Cylinder Head Gasket .....	469	Disc Brake Backing Plate .....	377	Door Lock Rod Silencer .....	293
Cylinder Heads .....	465	Disc Brake Conversion .....	358-367	Door Lock Rod, Inner .....	293
<b>D</b>					
Damper Pad, Insulation .....	12	Disc Brake Pad Spreader Tool .....	382	Door Lock Spring Clip .....	293
Damper, Harmonic .....	442	Disc Brake Set .....	356	Door Lock Striker .....	293
Dash Air Vent Bezel .....	425	Disc Brake Shield, Decal .....	203	Door Lock Switch Panel .....	58
Dash Ashtray .....	105	Disc Brake Spindle .....	328	Door Mirror, Inner Bezel .....	293
Dash Carrier Clip .....	72	Distributor .....	476-477	Door Mirror, Mount Screw .....	294-295
Dash Carrier Trim .....	72	Distributor Advance Curve Set .....	479	Door Mirror, Outer .....	294-295
Dash Clock .....	79	Distributor Cap .....	480-481	Door Opening Rods .....	293
Dash Clock Bezel .....	72	Distributor Clamp Wrench .....	479	Door Panel .....	21, 44-51
Dash Clock Lens .....	74	Distributor Drive Gear .....	478	Door Panel Carpet .....	52
Dash Cluster Brace .....	74	Distributor Gasket .....	478	Door Panel Clips .....	54, 59, 318
Dash Cover .....	72	Distributor Gear Assembly .....	478	Door Panel Emblem .....	59
Dash Gauge Lens .....	74-75	Distributor Hold Down Clamp .....	478	Door Panel Grab Handle Bezel .....	59
Dash Grab Handle .....	73	Distributor Housing Shims .....	478	Door Panel Plug .....	318
Dash Instrument Carrier Panel .....	72-73	Distributor Lead .....	480-481	Door Panel Trim, Upper .....	54
Dash Instrument Panel .....	80-83	Distributor Stud .....	478	Door Panel Trim, Lower .....	54
Dash Knob Bezel .....	101	Distributor Vacuum Line .....	478	Door Panel/Trim Removal Tool .....	56
Dash Knob Bezel, Decal .....	100	Distributor Vacuum Tee .....	479	Door Pull Handle Insert .....	55
Dash Lamp Lens .....	72	Distributor Washer .....	478	Door Push Button Lock Knob Spring .....	292
Dash Pad Bracket .....	71	Distributor Wire Grommet .....	478	Door Release Handle Escutcheon .....	59
Dash Pad Clip .....	71	Distributor Wire Harness .....	479	Door Reveal Molding .....	223
Dash Pad Support Block .....	71	Diverter Elbow, Smog .....	525	Door Seal, Insulator .....	213, 216
Dash Pad Trim Molding .....	71	Diverter Valve Tee, Air Injection .....	525	Door Seals .....	213, 216
Dash Pads .....	70-71	Divider, Convertible Rear Seat/Trunk .....	60	Door Shell .....	288
Dash Panel .....	276	Divide, Convertible Rear Seat/Trunk .....	60	Door Shell Plate Screw .....	9
Dash Panel Face .....	276	Dome Lamp Base .....	280	Door Shell Plates .....	9
Dash Panel Instrument Trim Panel .....	73	Dome Lamp Brackets .....	61	Door Skin .....	288
Dash Panel Molding Retainer .....	73	Dome Lamp Covers .....	61	Door Skin, Insulator .....	293
Dash Panel, Center .....	73	Dome Lamp Dimmer .....	61	Door Weatherstrip Retainer .....	213
Dash Plate, Cherrywood .....	73	Dome Lamp Lens .....	61	Door Window Crank Handle .....	57-58
Dash Screws .....	72	Dome Lamp Reflector .....	60	Door Window Glass Mount Stud Assembly .....	221
Dash Side Defroster Grill .....	426	Dome Lamp Screw Set .....	61	Door Window Guide .....	220
Dash Vent Assembly .....	426	Dome Lamp Wiring Clip .....	61	Door Window Guide Stabilizer .....	221
Dash Vent Ball .....	425	Dome Lamp Wiring Harness .....	61	Door Window Plate & Roller .....	221
Dash Vent Bezel Retainer .....	425	Door & Quarter Panel Frame .....	282	Door Window Plate Gasket .....	221
Dash Vent Bezel, Lower .....	426	Door Bottom .....	288	Door Window Regulator .....	220
Dash Vent Deflector Retainer .....	424	Door Bumper, Front .....	213	Door Window Regulator Roller .....	220
Dash Vent Knob .....	425	Door Edge Guard .....	180	Door Window Sash Channel .....	220
Dash Vent Knob Ferrule .....	425	Door Edge Guard .....	180	Door Window Stop .....	220, 221
Dash Vent Outlet .....	425	Door Frame, Inner .....	282	Door Window Track .....	220
Dealer Add-On Accessory Sticker .....	204	Door Glass .....	217-218	Door, Fuel .....	499
Decal Application Kit .....	206	Door Glass Hardware .....	220	Door, Glove Box .....	106
Decal, Restoration .....	196-205	Door Glass Mounting Set .....	221	Double Flaring Tool Set .....	382
Decal, Stripe .....	206-211	Door Glass Sash Mount Stud .....	220-221	Dowel Pins, Bellhousing .....	555
Deflector, Air Outlet .....	426	Door Glass Stabilizer .....	221	Downpipe, Exhaust Manifold .....	526
Defogger Bezel .....	101	Door Glass Stop Bumper Assembly, Forward .....	221	Drain Plug .....	326
Defogger Switch .....	401	Door Handle Clip .....	57, 318	Drain Plug, Oil Pan .....	472
Defroster Vent Assembly .....	124	Door Handle Escutcheon .....	57	Drain Plug, Transmission Case .....	559
Degreaser .....	480	Door Handle Gasket .....	292	Drain Plug, Transmission Pan .....	543
Degree Wheel Tool .....	432	Door Handle Insert .....	205	Drain Tubes, Hood Louver .....	265
Delay, Radio Off .....	97	Door Handle Mechanism .....	57	Drink Holder .....	478
Delete Panel, AC .....	422	Door Handle, Inner .....	59	Drinking Glasses .....	141
Delete Plate, Firewall .....	276	Door Handle, Inner .....	56-57	Drip Rail Molding .....	224
Delete Plate, Heater .....	422, 427	Door Handles, Outer .....	292, 578	Drip Rail Molding Connectors .....	224
Delete Plate, Radio .....	73	Door Hinge .....	289	Drip Rail Support .....	283
Deluxe Door Handle Screw .....	57	Door Hinge Arm, Lower .....	289	Drive Gear Bearing Ring .....	559
Deluxe Door Panel Bracket .....	55	Door Hinge Bolt .....	289	Drive Gear, Distributor .....	478
Deluxe Door Panel Grab Handle Screw Set .....	59	Door Hinge Repair Set .....	289	Driveshaft .....	354
Detailing Scraper .....	204	Door Hinge Spring, Lower .....	289	Driveshaft Safety Loop .....	353-354
Detent Plate, Ratchet For Staple Shifters .....	547	Door Inner Panel Access Hole Plug .....	59	Driveshaft Tunnel Brace .....	335
Detent, Shifter .....	547	Door Inside Locking Rod Clip .....	293	Driveshaft U-Joint .....	355
Dial Indicator Tool .....	432	Door Insulation .....	10	Driveshaft, Oil Pump .....	471
Diaphragm, Master Cylinder Cover .....	370	Door Jamb Windance Lamp Switch Harness .....	202	Drive Gear, Distributor .....	478
Diaphragm, Vacuum Secondary .....	512	Door Jamb Hatch Panel .....	281	Driveshaft .....	354
Dielectric Grease .....	486	Door Jamb Rubber, Interior .....	216	Driveshaft Safety Loop .....	353-354
Differential .....	354	Door Jamb Switch .....	261	Driveshaft Tunnel Brace .....	335
Differential Cover .....	357	Door Jamb Switch .....	261	Driveshaft U-Joint .....	355
Differential Cover Bolt Set .....	357	Door Jamb Vent Grill .....	297	Driveshaft, Oil Pump .....	471
Differential Cover Filter/Mag .....	357	Door Jamb Windance Lamp Switch Harness .....	202	Drive Gear, Distributor .....	478
Differential Fill Plug, Positraction .....	357	Door Jamb Windance Lamp Switch Harness .....	202	Driveshaft .....	354
Digital Ignition Points Conversion .....	484	Door Jamb Windance End Cap .....	52	Driveshaft Safety Loop .....	353-354
Digital Instrument Cluster .....	84	Door Latch .....	292	Driveshaft Tunnel Brace .....	335
Dimmer Switch, Actuator .....	111	Door Latch Clips .....	318	Driveshaft U-Joint .....	355
Dimmer Switch, Headlamp .....	100	Door Latch Rod Center Clip .....	293	Driveshaft, Oil Pump .....	471
		Door Latch Rod Clip .....	293	Drive Gear, Distributor .....	478
		Door Latch Screws .....	292, 317	Driveshaft .....	354
		Door Lock .....	290	Drop Spindles .....	328, 361
		Door Lock Actuator, Power .....	578	Drum Brake Adjusting Hole Cover .....	377
		Door Lock Bellcrank Retainer .....	293	Drum Brake Assembly, Rear .....	375
		Door Lock Cylinder Retainer .....	291	Drum Brake Shoe Spacer Bar .....	377
				Drum Brake Spindle .....	376
				Drum Brake Wheel Cylinder Rebuild Kit .....	376
				Dual Battery Control System .....	580
				Dual Exhaust Hanger Set .....	531
				Dual Feed Fuel Line .....	512
				Duct Hose .....	424
				Duct, Heater .....	420
				<b>E</b>	
				EPI Air Cleaner Base .....	518
				EPI Conversion Sets .....	519

# Product Index

EFI Fuel Return Adapter .....	518	Evaporator Core .....	431	Fasteners, License Plate .....	155
EFI Set .....	518	Evaporator Core Expansion Tube .....	431	Feeler Gauges .....	481
EGR/Smog Block Off .....	524-525	Evaporator Core Housing Seal .....	431	Fender .....	270
Elbow, Valve Cover .....	457	Evaporator Core Outlet Case .....	431	Fender Air Extractors .....	271
Electric Cooling Fan .....	408-409	Evaporator Core Outlet Tube Clamp .....	430	Fender Bib .....	168
Electric Cooling Fan Motor .....	407	Evaporator Core Pipe Seal .....	431	Fender Brace .....	273
Electric Fan Bracket .....	409	Exhaust Balance Pipe .....	526	Fender Corner Edge Molding .....	223
Electric Fan Mounting Rod .....	409	Exhaust Clamp .....	527	Fender Cover .....	168
Electric Fan Switch .....	410-411	Exhaust Crossover .....	526	Fender Decal .....	205
Electric Fan Wiring Harness .....	408, 410-411	Exhaust Cutout .....	534	Fender Emblem .....	140, 190-193
Electric Fuel Pump .....	501-502	Exhaust Cutout Controller .....	534	Fender Flare .....	297
Electric Headlamp Door Conversion, RS .....	247	Exhaust Flange .....	523, 527	Fender Skirt Splash Apron .....	271
Electric Kick Down Conversion .....	548	Exhaust French Lock .....	524	Fender Skirt to Firewall Brace .....	271
Electric Truck Latch Release Kit .....	306	Exhaust Hanger .....	531	Fender Skirt, Front Inner .....	271
Electric Vacuum Pump .....	373	Exhaust Header Mount Plate .....	527	Fender to Cowl Seals .....	314
Electric Water Pump .....	416	Exhaust Headers .....	520-521	Fender to Side Cowl Seal .....	271
Electric Water Pump Drive Set .....	416	Exhaust Installation Set .....	531	Fender Wiring Harness Strap .....	269, 583
Electric Water Pump Relay .....	581	Exhaust Manifold .....	522	Ferrule, Dash Vent Knob .....	425
Electrical Connector Separator .....	583	Exhaust Manifold Downpipe .....	526	Ferrule, Door Lock Knob .....	526
Electrical Manual .....	166	Exhaust Manifold Gasket .....	524	Fiberglass Front End .....	250
Electronic Disc Brake Conversion Set .....	366	Exhaust Manifold Pipes .....	526	Fiberglass Trunk Lid .....	299
Electronic Speed Sensor Lead .....	540	Exhaust Manifold to Headpipe Extension .....	523	Filler Panel, Bumper .....	275
Element, Air Filter .....	456, 458-461	Exhaust Manifold Y-Pipe .....	526	Filler Panel, Lower Deck .....	298
Emblem Adhesive .....	193	Exhaust Manual .....	165	Filler Panel, Radiator Support .....	400
Emblem Set .....	188	Exhaust Paint .....	186	Filler Panel, Tail Lamp .....	239
Emblem Speed Nut .....	193	Exhaust Pipe Packing Gasket .....	523	Filler Panel, Upper Deck .....	298
Emblem Template .....	193	Exhaust Pipe, Front .....	523	Filler Panel, Header Panel .....	400
Emblem, Air Cleaner .....	456	Exhaust System .....	527, 531-533	Filter Magnet, Transmission .....	543
Emblem, Astro Ventilation Dash .....	425	Exhaust Tip .....	535	Filter, Fuel .....	505
Emblem, Console Shift Plate .....	129	Exhaust Transition Set .....	526	Filter, Fuel Tank Pickup Tube .....	499
Emblem, Door Panel .....	59	Exhaust Turndown .....	534	Filter, Ignition Noise .....	477
Emblem, Fender .....	140, 190-193	Exhaust Wrap .....	522	Filter, Oil .....	475
Emblem, Forward Console Plate .....	128	Exhaust Y-Pipe .....	526	Filter, Quarter Noise .....	425
Emblem, Fuel Door .....	106	Expansion Valve, AC .....	431	FilterMag, Oil Filter .....	475
Emblem, Glove Box Door .....	106	Extended Wheel Opening Patch Panel .....	297	Fire Extinguisher .....	179
Emblem, Grill .....	189-190	Extender, Bucket Seat .....	38	Fire Extinguisher Brackets .....	179
Emblem, Header Panel .....	189-190	Extension Bar, Front Fender .....	270	Firewall Body Mount Patch Panel .....	276
Emblem, Hood .....	120	Extension, Front Fender .....	270-271	Firewall Rubber Seal Set .....	210
Emblem, Horn .....	120	Extension, Rocker Panel .....	258	Firewall Delete Plate .....	276
Emblem, Horn Cap .....	120	Extensions, Trunk Floor .....	305	Firewall Grommet, Speedometer Cable .....	7
Emblem, Hurst Shifter .....	453	Extensions, Rocker Panel .....	257	Firewall Guard, Carpet .....	99
Emblem, Rear Panel .....	194-195	Exterior Lamp Lens Gasket Set .....	238	Firewall Insulation Pad .....	10
Emblem, Rear Spoiler .....	194-195	Exterior Molding Set .....	232	Firewall Insulator .....	10
Emblem, Rocker Panel .....	194	Extinguisher Mounts .....	179	Firewall Panel Retainer Clip .....	10
Emblem, Sail Panel .....	195	<b>F</b> .....		Firewall Panel .....	276
Emblem, Seat .....	39	Faceplate, Radio .....	96	Firewall Relay Cover .....	576
Emblem, Steering Wheel .....	120	Factory Service Manual .....	158	Firewall Retainer Clips .....	573
Emblem, Trunk Lid .....	194-195	Factory Shop Manual CD .....	158	Firewall Rubber Boot .....	319
Emission System Hose Routing Decal .....	198	Fan Belt .....	412-413	Firewall to Floor Brace .....	280
Emissions Decal .....	198-199	Fan Blade, Radiator Cooling .....	406	Firewall Wire Pad .....	573
End Cap, Door Jamb Windlace .....	52	Fan Bracket, Electric .....	409	Fitting, AC POA Valve .....	431
Engine .....	434-435	Fan Bracket, Radiator Cooling .....	407	Fitting, AC Receiver Dryer .....	431
Engine Assembly Grease .....	433	Fan Clutch .....	407	Fitting, Brake Line .....	363
Engine Bolt Set .....	462	Fan Clutch to Water Pump Stud .....	407	Fitting, Heater Hose .....	416
Engine Bracket .....	438	Fan Controller .....	410	Fitting, Intake Manifold .....	463
Engine Break-In Oil .....	474	Fan Guard Bumper .....	403	Fitting, Oil Line .....	131
Engine Call Out Decal .....	204	Fan Mount, Electric Cooling .....	407	Fitting, Oil Line Block .....	131
Engine Cover .....	453	Fan Mounting Gasket .....	409	Fitting, Water Pump Hose Outlet .....	416
Engine Dress-Up Sets .....	453	Fan Shroud .....	403	Flame Arrestor, Air Cleaner .....	457
Engine Frame Bracket .....	437	Fan Shroud Clips .....	403	Flange, Exhaust .....	527
Engine Gasket Set .....	469	Fan Shroud Fastener .....	403	Flang, Rocker Panel .....	542
Engine Grease .....	433	Fan Spacer .....	407	Flexi-Rod .....	228
Engine Manual .....	162-163	Fan Spacer Bolt Set .....	407	Flexi-Rod, Shift Actuator .....	289
Engine Mount .....	338, 438	Fan Switch .....	409-410	Flexlines, Stainless Steel Brake .....	363
Engine Oil .....	474	Fan Thermostat, Electric .....	411	Flexplate .....	540
Engine Oil Cooler .....	474	Fan, Alternator .....	494	Flexplate Bolt Set .....	513
Engine Oil Cooler Lines .....	474	Fan, Blower Motor .....	422	Flange Adjustment Tool .....	540
Engine Oil Dipstick .....	473	Fan, Electric Cooling .....	408-409	Flare Head Shield .....	527
Engine Oil Dipstick Tube .....	473	Fascia, Front Bumper .....	253, 255	Floor Insulation .....	537
Engine Pull Bracket .....	432	Fast Idle Cut-Off Relay .....	504	Floor Mats .....	537
Engine Rotation Adapter Tool .....	432	Fastener Kit, Exterior .....	259	Floor Insulation Accelerator Pedal .....	138
Engine Tilter Tool (Hoist) .....	432	Fastener Kit, Underhood / Trunk .....	259	Floor Mount, Steering Column .....	109
Engine Wiring Harness .....	370, 575	Fastener Set, Grill .....	249	Floor Pan .....	277, 279
Epoxy Putty .....	311	Fastener Set, Hood Insulation .....	268	Floor Pan Brace .....	280
Epoxy, Gas Tank Repair .....	498	Fastener Set, Interior .....	53	Floor Pan Patch Panel .....	278-279
Epoxy, Metal Weld .....	535	Fastener Set, Rally Sport Clevis Pin .....	244	Floor Pan Plug .....	311
Epoxy, Plastic Weld .....	535	Fastener, Fan Shroud .....	244	Floor Pan Repair Set .....	281
Epoxy, Welding .....	407	Fasteners and Bolts .....	314-319	Floor Pan to Firewall Extension Panel .....	278
Escutcheon, Door Handle .....	57	Fasteners, LED Accessory .....	155	Floor Pan to Trunk .....	278
Escutcheon, Door Release Handle .....	59			Floor Shifter .....	549-553, 561
Escutcheon, Headrest .....	39			Floor Shifter Rod .....	546
Escutcheon, Seat Belt .....	42			Floor Stowage Lock .....	291
Evaporator Box Seal .....	430			Floor, Trunk .....	377
Evaporator Box Drain Hose .....	421			Floor/Trunk Pan & Rear Frame Rails .....	204

## Product Index

Flush Mount Glass .....	217	Fuel Feed Line .....	506	Gasket, Distributor .....	478	
Flywheel .....	556	Fuel Filler Cap .....	498	Gasket, Door Handle .....	292	
Flywheel Converter Cover (Torque Converter) .....	542	Fuel Filler Neck .....	498	Gasket, Door Window Plate .....	221	
Flywheel to Crankshaft Bolt .....	556	Fuel Filter .....	505	Gasket, Exhaust Manifold .....	524	
Flywheel Tool .....	432	Fuel Filter Bracket .....	505	Gasket, Exhaust Pipe Packing .....	523	
Foam, Seat .....	20-21, 37	Fuel Filter Spring .....	505	Gasket, Fan Mounting .....	409	
Fog Lamp Assembly .....	234	Fuel Gauge .....	79	Gasket, Fuel Sender .....	499	
Fog Lamp Bulb .....	234	Fuel Gauge Lens .....	74	Gasket, Header Collector .....	527	
Fog Lamp Cover .....	241	Fog Lamp .....	504	Gasket, Hood Louver .....	265	
Fog Lamp Relay .....	234	Fuel Hose Clamps .....	319	Gasket, Intake Manifold .....	469	
Fog Lamp Wiring Harness .....	234	Fuel Hose End .....	504	Gasket, License Lamp .....	240	
Fold Down Rear Seat Bracket .....	40	Fuel Hose Pinch Clamps .....	504	Gasket, Mounting Tail Lamp .....	239	
Fold Down Rear Seat Latch .....	40	Fuel Hose Stamp .....	497	Gasket, Oil Pan .....	470-471	
Fold Down Rear Seat Latch Catch .....	40	Fuel Injection Manual .....	166	Gasket, Oil Pan Drain Plug .....	472	
Fold Down Rear Seat Partition .....	40	Fuel Injection Performance Set .....	538	Gasket, Outer Door Lock Cylinder .....	294-295	
Fold Down Seat Back Stopper .....	40	Fuel Injection System .....	518	Gasket, Outer Door Mirror .....	232	
Fold Down Seat Latch Trigger .....	40	Fuel Inlet Nut .....	512	Gasket, Park Lamp Lens .....	232	
Folding Chair .....	150	Fuel Line Armor Shielding .....	506	Gasket, Rear Bumper End .....	254	
Footrest, Adjustable .....	138	Fuel Line Bracket .....	505	Gasket, Side Marker .....	235	
Fork, Clutch Release .....	558	Fuel Line Clip .....	506	Gasket, Thermo Manifold .....	419	
Forward Console Plate Emblem .....	128	Fuel Line Disconnect Set .....	504	Gasket, Timing Cover .....	469	
Frame Brace .....	336	Fuel Line Support Bracket .....	505	Gasket, Transmission Pan .....	543	
Frame Pivot Bolt, Convertible Top .....	287	Fuel Line Y-Block .....	505	Gasket, Trunk Bezel .....	306	
Frame Rails .....	299, 304	Fuel Line, Cross Ram .....	507	Gasket, Trunk Lock Cylinder .....	306	
Frame to Radiator Support Bracket .....	261	Fuel Line, Dual Feed .....	512	Gasket, Valve Cover .....	448, 469	
Frame, Bucket Seat .....	38	Fuel Pressure Gauge .....	502	Gasket, Water Pump to Block .....	83-84	
Frame, Cow Inductance Valve .....	418	Fuel Pressure Tester .....	433, 500	Gauge Adapter .....	83-84	
Frame, Door & Quarter Panel .....	282	Fuel Pump .....	500-503	Gauge Assembly, Console .....	123	
Frame, Inner Door .....	282	Fuel Pump Block Off Plate .....	500	Gauge Bezel, Console .....	123	
Frame, License Plate .....	140-141, 157	Fuel Pump Bolt .....	501	Gauge Cluster Brake .....	74	
Frame, Rear Seat .....	38	Fuel Pump Bolt .....	503	Gauge Copper Tubing .....	76	
Frame, Vem Window Glass .....	218	Fuel Pump Insulation Plate .....	500	Gauge Mounting Bezel .....	123	
Freeze Plugs .....	402	Fuel Pump Pushrod .....	500	Gauge Face Set .....	75	
Fresh Air Duct Seal Set .....	424	Fuel Pump Relay .....	504, 581	Gauge Harness .....	92	
Front Air Dam .....	256-257	Fuel Pump Safety Switch .....	502	Gauge Lamp Bulbs .....	92	
Front Air Deflector .....	255	Fuel Pump to Carburetor Line .....	503	Gauge Lens, Dash .....	74-75	
Front Air Deflector Retainer .....	255	Fuel Recommendation Decal .....	503	Gauge Mount Angle Ring .....	84	
Front Brake Set .....	358-367	Fuel Return Line .....	506	Gauge Mount Panel .....	84	
Front Bump Stop Set .....	252-253	Fuel Sender Ring and Gasket .....	499	Gauge Mount Pedestal .....	84	
Front Bumper .....	252-253	Fuel Sender Wiring Harness .....	499	Gauge Panel .....	80-84, 92	
Front Bumper Bracket .....	254	Fuel Sending Unit .....	84	Gauge Pod, Console .....	123	
Front Bumper Corner Mount .....	255	Fuel Sending Unit Lock Ring .....	496	Gauge, Console .....	123	
Front Bumper Cover .....	253, 255	Fuel System Cleaner .....	498	Gauge, Fuel .....	79	
Front Bumper Guard .....	252-253	Fuel Tank .....	496-497	Gauge, Fuel Pressure .....	505	
Front Bumper Impact Bar .....	253	Fuel Tank Anti-Squeak Insert .....	497	Gauge, Speedometer .....	76	
Front Bumper Strips .....	253	Fuel Tank Mounting Bracket .....	497	Gauge, Tachometer .....	78-79	
Front Caliper O-Ring Bushing .....	376	Fuel Tank Mounting Strap .....	497	Gauge, Temperature .....	79	
Front Door Bumper .....	213	Fuel Tank Mounting Strap Bolt .....	497	Gauge, Volt .....	79	
Front Door Window Glass Guide Pad .....	220-221	Fuel Tank Neck/Sleeve Clamp .....	498	Gauges, .....	76, 78-91	
Front End Rebuild Kit .....	327	Fuel Tank Pickup Tube Filter .....	499	Gear Assembly, Distributor .....	478	
Front End Sheet Metal Hardware Kit .....	259	Fuel Tank Sealer .....	504	Gear Indicator Sending Unit .....	82	
Front Fender .....	270	Fuel Tank Sending Unit .....	499	Gear Indicator, Transmission .....	552	
Front Fender Extension .....	270-271	Fuel Tank Sending Unit Lock Ring Tool .....	499	Gear Oil, Synthetic .....	357	
Front Fender Extension Bar .....	270	Fuel Tank Vent Valve .....	498	Gear Shifter, Transmission .....	552	
Front Fender Patch Panel .....	271	Fuel Vapor Line .....	504	Gear, Distributor Drive .....	478	
Front Floor Brace .....	280	Fuel Vapor Line .....	506	Gear, Timing .....	443	
Front Grill .....	251	Fuel/Break Lens .....	74	Gearbox, Manual Steering .....	324	
Front Headlamp Support .....	230	Fuel/Volt Gauge Mounting Plate .....	473	Gearshift Bushing, Console .....	549	
Front Inner Bumper Bracket Cushion .....	255	Funnel .....	74	Glass Hardware .....	219	
Front Inner Fender Skirt .....	271	Fuse Block .....	580	Glass Kibs .....	217	
Front Inner Wheel Bearing .....	329	Fuse Block Screws .....	580	Glass Mounting Set, Door .....	217	
Front Lamp Wiring Harness .....	574	Fuse Holder .....	580	Glass Seal Rope-In Tool .....	218	
Front Lower Frame Brace .....	336	Fuse Panel Cover .....	71, 580	Glass Setting Tape .....	219	
Front Outer Wheel Bearing .....	329	Fuse Panel Wiring .....	571	Glass Stops .....	220	
Front Runner Drive .....	441	Fuses .....	580	Glass Support, Windshield .....	219	
Front Seat Base .....	280	<b>G</b> .....		Glass, Back Window .....	217	
Front Seat Frame Floor Support .....	280	Gas Cap .....	498	Glass Mounting Set, Door .....	217	
Front Side Fender Flare .....	256	Gas Tank .....	496-497	Glass, Quarter Window .....	217-218	
Front Spoiler .....	256-257	Gas Tank Anti-Squeak Insert .....	497	Glass, Vent Window .....	217-218	
Front Spoiler Installation Hardware .....	256	Gas Tank, Rear Spoiler .....	498	Glass, Windshield .....	217	
Front Spoiler Mount Bracket .....	336	Gasket Maker, Silicone .....	415	Glasses, Drinking .....	141	
Front Steering Brace .....	256	Gasket Sealant .....	468	Glasses, Muffler .....	531	
Front Strut Tower Brace .....	336	Gasket Set, Engine .....	469	Glove Box Assembly, Console .....	126	
Front Subframe .....	338	Gasket Set, Exterior Lamp Lens .....	238	Glove Box Catch Plate .....	106	
Front Toe Board .....	279	Gasket Set, Manual Transmission .....	559	Glove Box Clips .....	107, 318	
Front Wheel Bearing Grease Cap .....	329	Gasket, Air Cleaner to Carburetor .....	510	Glove Box Door .....	106	
Front Wheel Bearing Seal .....	329	Gasket, Back-Up/Reverse Lamp .....	240	Glove Box Door Arm Bumper .....	107	
Fuel Additive .....	505, 507	Gasket, Brake Backing Plate .....	377	Glove Box Door Stopper .....	106	
Fuel Decal .....	499	Gasket, Carburetor .....	510	Glove Box Door Stopper Bracket .....	106	
Fuel Door .....	499	Gasket, Cylinder Head .....	469	Glove Box Hinge .....	106	
Fuel Door Bumper .....	499			Glove Box Lamp Bulb .....	107	
Fuel Door Emblem .....	194			Glove Box Lamp Wiring Harness .....	107	
Fuel Door Lock .....	499					
Fuel Evaporation Relay .....	504					

# Product Index

Glove Box Lock ..... 107  
 Glove Box Lock Cylinder ..... 107  
 Glove Box Screws ..... 106, 118  
 Glove Box Striker ..... 107  
 Glove Box Support Strap ..... 106  
 Glove Box, Inner ..... 106  
 Glue, Headliner ..... 63  
 GM Mark Of Excellence Decal ..... 202  
 Grab Handle, Interior Door ..... 59  
 Grease, Engine Assembly ..... 433  
 Grease, Formula Five PreTUBE ..... 337  
 Grill Decal ..... 204  
 Grill Emblem ..... 189-190  
 Grill Emblem Retainer ..... 189  
 Grill Fastener Set ..... 249  
 Grill Molding ..... 222  
 Grill Mounting Bracket ..... 249  
 Grill Reinforcement ..... 222  
 Grill Vertical Divider Bracket, Rally Sport ..... 250  
 Grill Vertical Divider Rubber Insert, RS ..... 250  
 Grill, Door Jamb Vent ..... 297  
**Grill, Front** ..... 248-251  
 Grommet, AC Hose ..... 429  
 Grommet, Accelerator Rod ..... 133  
 Grommet, Convertible Top Motor ..... 287  
 Grommet, Core Support (Electrical) ..... 573  
 Grommet, Cowl Induction Hood ..... 455  
 Grommet, Distributor Wire ..... 478  
 Grommet, Heater Core Pipe ..... 420  
 Grommet, Power Window ..... 578  
 Grommet, Rally Sport Firewall ..... 245  
 Grommet, Rally Sport Park Lamp Wiring ..... 233  
**Grommet, T-Top** ..... 214  
**Grommet, Valve Cover** ..... 445  
 Grommet, Windshield Wiper Motor ..... 275  
**Grommet, Wire** ..... 573  
 Ground Effects ..... 257-258  
 Ground Strap ..... 583  
 Ground Strap, Antenna ..... 93  
 Ground Strap, Headlamp/Wiper Switch ..... 100  
 Ground Wire, Voltage Regulator ..... 494  
 GTA Wheels ..... 388  
**Guard Kit, Splash** ..... 256  
 Guard, Rear Bumper ..... 252  
 Guide Plate, Brake Shoe ..... 377  
 Guide, Brake Cable ..... 380  
 Guide, Door Window ..... 220  
 Guide, Shoulder Belt ..... 42  
 Guard, Trunk Weatherstrip ..... 299

## H

H4 Conversion Wiring Harness ..... 228  
 H4 Headlamp Conversion Relay ..... 228  
 Halogen Headlamps with Adjustment Knobs ..... 228  
 Handle Mechanism, Door ..... 57  
 Handle, Armrest/Door Pull ..... 73  
 Handle, Dash ..... 73  
**Handle, Door Window Crank** ..... 57-58  
 Handle, Interior Door Grab ..... 59  
 Handle, Outer Door ..... 292  
 Handle, Seat Adjuster ..... 40  
 Handle, Vent Window ..... 58  
 Hardware Set, Brake ..... 377  
 Hardware Set, Console Mount ..... 125  
 Hardware Set, Door Glass Mounting ..... 247  
 Hardware Set, Horseless Shifter ..... 547  
 Hardware Set, Oil Pan ..... 471  
 Hardware, AC Box Cover ..... 421  
 Hardware, AC Underhood ..... 431  
 Hardware, Front Spoiler ..... 256  
 Hardware, Headlamp Bezel Mounting ..... 242  
 Hardware, Heater Delete Plate ..... 427  
 Hardware, Heater/AC Duct ..... 242  
 Hardware, License Plate ..... 260  
 Hardware, Park Lamp Mounting ..... 233  
 Hardware, Pillar Post ..... 65  
 Hardware, Radiator Support Bushings ..... 261  
 Hardware, Rear Quarter Door ..... 243  
 Hardware, Retaining Clips ..... 255  
 Hardware, Rocker Panel Molding ..... 225  
 Hardware, Shock ..... 345  
 Hardware, Spoiler Mounting ..... 300  
 Hardware, Tail Lamp Bezel Mounting ..... 238

Hardware, Tail Lamp Housing ..... 238  
 Hardware, Valance Panel ..... 260  
 Hardware, Vinyl Top Molding ..... 224  
 Harmonic Balancer ..... 442  
 Harmonic Balancer Cover ..... 442  
 Harmonic Balancer Puller ..... 442  
 Harmonic Balancer Tool ..... 442  
 Harmonic Balancer Woodruff Key ..... 442  
 Harmonic Rammer ..... 442  
 Harness, Gauge ..... 536  
**Harness, Lighting** ..... 570  
**Hat / Cap** ..... 140-144, 148-149  
 Hat / Lapel Pin ..... 142  
 Hatch Hinges ..... 307  
 Hatch Panel Retainer ..... 69  
 Hatch Pull-Down Repair Set ..... 307  
 Hatch Strut Cover ..... 307  
**Hazard Lamp Switch Knob** ..... 101, 111  
 Head Bolts ..... 462  
 Head Bolt ..... 524  
 Head Bow Stop Bumper ..... 286  
 Head Bow, Convertible ..... 286  
 Head Collector Ball Flange ..... 526  
 Head Collector Gasket ..... 527  
 Head Collector Reducer ..... 521  
 Head Gasket ..... 524  
 Head Lamp, Convertible Top ..... 69  
 Head Lamp Panel ..... 260-261  
 Head Lamp Panel Emblem ..... 189-190  
 Head Lamp Panel Filler Plate ..... 400  
 Head Lamp Panel Molding ..... 222  
 Head Lamp Trap ..... 535-537  
 Head, Engine ..... 520-521  
**Headlamp Adjuster** ..... 229  
 Headlamp Assembly ..... 228  
 Headlamp Auto-Off Relay ..... 229  
 Headlamp Beam Adjusting Nut ..... 229  
 Headlamp Beam Adjusting Spring ..... 229  
 Headlamp Bezel ..... 242  
**Headlamp Bezel Screws** ..... 242  
**Headlamp Bulb** ..... 226-228  
 Headlamp Bushing Set, Rally Sport ..... 244  
 Headlamp Cover ..... 229, 241  
 Headlamp Dimmer Switch ..... 244  
 Headlamp Door Actuator Motor, RS ..... 244, 243  
 Headlamp Door, Rally Sport ..... 243  
 Headlamp Housing ..... 230  
 Headlamp Mounting Bucket ..... 230  
 Headlamp Mounting Panel ..... 230  
 Headlamp Nut Tool ..... 100  
**Headlamp Pigtail** ..... 229  
 Headlamp Relay ..... 229  
 Headlamp Repair Kit, Rally Sport ..... 247  
 Headlamp Retaining Ring ..... 230  
 Headlamp Support Bracket ..... 230  
 Headlamp Washer Hose ..... 229  
 Headlamp Switch Bezel Retainer ..... 101  
 Headlamp Switch Knob ..... 100  
 Headlamp Switch Mounting Nut ..... 100  
 Headlamp Trim Ring ..... 230  
 Headlamp Washer Drip Valve Solenoid ..... 229  
 Headlamp Washer Hose ..... 229  
 Headlamp Washer Nozzle ..... 229  
 Headlamp Washer Nozzle Nut ..... 229  
 Headlamp Wiring Harness ..... 228  
 Headlamp/Wiper Nut Tool ..... 101  
 Headlamp/Wiper Switch Ground Strap ..... 100  
 Headliner Instruction Tag ..... 66-67, 285  
 Headliner Board ..... 67  
 Headliner Bows ..... 68  
 Headliner Glue ..... 63  
 Headliner Installation Tool ..... 63  
 Headliner Molding ..... 65  
**Headliner Molding Clips** ..... 65  
 Headliner Mounting Clip ..... 68  
 Headliner Retainer Strips ..... 68  
 Headliner Trim Clip ..... 68  
 Headliner Trim Panel ..... 68  
 Headrest Cover ..... 20-21  
 Headrest Escutcheon ..... 39  
 Headrest, Seat ..... 39  
**Heat Riser Valve** ..... 523  
 Heat Shield, Air Intake ..... 461

Heat Shield, Carburetor ..... 512-513  
 Heat Shield, Floor ..... 537  
 Heat Shield, Hood ..... 537  
 Heat Shield, Muffler ..... 530, 537  
 Heat Shield, Spark Plug Wire ..... 488-489  
 Heat Shield, Starter ..... 491  
 Heat Shield, Turbo ..... 537  
 Heat Shield, Wire ..... 537  
 Heat Shrink Hose Clamp ..... 404  
 Heat Seals ..... 523  
 Heat Stove ..... 523  
 Heat Stove Mounting Stud ..... 523  
 Heater and AC Control Lens ..... 427  
 Heater Blower Motor ..... 422, 426  
 Heater Box Assembly ..... 427  
 Heater Box Control Cable Clip ..... 427  
 Heater Box Cover Mounting Set ..... 422  
 Heater Box Foam Washer ..... 424  
 Heater Box Wire Retainer ..... 426  
 Heater Control Assembly ..... 426  
 Heater Control Backing Plate ..... 426  
 Heater Control Cable Retainer ..... 427  
 Heater Control Cables ..... 426  
 Heater Control Lens Clip ..... 427  
 Heater Control Lens Clump ..... 427  
 Heater Control Panel Mounting Stud ..... 427  
 Heater Control Panel Delete Plate ..... 427  
**Heater Control Panel Lens** ..... 427  
 Heater Control Panel Switch Knob ..... 427  
 Heater Control Valve ..... 421  
 Heater Control Valve Mounting Rivet ..... 421  
 Heater Core ..... 420  
 Heater Core Clamp ..... 421  
 Heater Core Mounting Clip ..... 420  
 Heater Core Pipe Grommet ..... 420  
 Heater Core Strap ..... 421  
 Heater Core Tube Seal ..... 420  
 Heater Core Tube Seal Retainer ..... 420  
 Heater Deflector Duct, Lower ..... 424  
 Heater Delete Plate ..... 427  
 Heater Delete Plate Hardware ..... 427  
 Heater Diverter Valve Link Connector ..... 422  
 Heater Duct ..... 420  
 Heater Duct Mounting Hardware ..... 424  
 Heater Hose Bracket ..... 405  
 Heater Hose Clamp ..... 421  
 Heater Hose Fitting ..... 416  
 Heater Lever ..... 427  
 Heater Valve ..... 421  
 Heater Wiring Harness ..... 576  
 Heater/AC Control Lens Backing Paper ..... 427  
 Heater/De-lever Lever ..... 427  
 HEI Battery/Tach Pigtail ..... 479  
 HEI Wire Harness ..... 479  
 HI Temp Coating ..... 536  
 Hi-Beam Indicator Set ..... 72  
**High-Alt Alternator Wiring** ..... 581  
 Hinge Pillar to Rocker Panel Reinforcement ..... 289  
 Hinge Pin, Console Ashtray Lid ..... 125  
 Hinge Repair Set, Door ..... 289  
 Hinge, Console Lid ..... 124  
 Hinge, Glove Box ..... 106  
 Hinge, Rally Sport Control Opening ..... 243  
 Hinge, Trunk Lid ..... 268  
 Hoist, Engine Tilter Tool ..... 432  
 Holcutter Tool ..... 313  
 Hood Down, Valve Cover ..... 447  
 Hood ..... 262-263  
 Hood & Fender Molding Kit ..... 272  
 Hood Adjustment Set ..... 268  
 Hood Adjustor Screw ..... 268  
 Hood Applique ..... 265  
 Hood Cow Vent ..... 272  
 Hood Decal ..... 209  
 Hood Emblem Cover ..... 265-266  
 Hood Hinge Bolt ..... 266, 314  
 Hood Hinge Spring ..... 266  
**Hood Insulation** ..... 268-269  
 Hood Insulation Retainer ..... 268

INDEX, POLICIES & ORDER FORMS

# Product Index

Hood Latch Assembly .....	267	Idle Stop Solenoid Control Wire .....	577	Instrument Lamp Bulb, LED .....	75
Hood Latch Bolt .....	267	<b>Idle Arm</b> .....	326	Instrument Panel Bulb .....	102
Hood Latch Pin Collar .....	267	<b>Igniter Pulley</b> .....	413, 417	Instrument Panel Center Lamp Lens .....	74
Hood Latch Release Cable Clip .....	267	<b>Ignition Bezel Nut</b> .....	102	Instrument Panel Dimmer Switch .....	82
Hood Latch Striker .....	267	<b>Ignition Box</b> .....	479	Instrument Panel J-Clip .....	75
Hood Latch Support .....	268	<b>Ignition Coil Bracket</b> .....	481-483	Instrument Panel Lamp Socket Plate .....	72
Hood Ledger Molding .....	223	<b>Ignition Coil Bracket Hardware</b> .....	482	<b>Insulation</b> .....	11-12, 181
Hood Louver Drain Tubes .....	265	<b>Ignition Coil Cover</b> .....	452, 482	<b>Insulation Damper Pad</b> .....	12
Hood Louver Gasket .....	265	<b>Ignition Coil Resistor</b> .....	482	<b>Insulation Door</b> .....	10
Hood Louvers .....	265	<b>Ignition Coil Wire</b> .....	483	<b>Insulation Pad, Firewall</b> .....	10
Hood Opening Assist Rod .....	267	<b>Ignition Control Module</b> .....	479, 481, 484	<b>Insulation Wrap</b> .....	537
Hood Ornament, Z28 .....	265	<b>Ignition Distributor</b> .....	476-477	<b>Insulation, Floor</b> .....	537
Hood Pins .....	168, 264	<b>Ignition Distributor Washer</b> .....	478	<b>Insulation, Hood</b> .....	268-269
Hood Pop-Up Spring .....	267	<b>Ignition Indicator Bezel</b> .....	102	<b>Insulation, Kick Panel</b> .....	537
Hood Release Cable .....	267	<b>Ignition Instruction Sleeve</b> .....	201	<b>Insulation, Panel</b> .....	53
Hood Rubber Bumper .....	268	<b>Ignition Lock</b> .....	290	<b>Insulation, Tail Lamp Rear Panel</b> .....	239
Hood Safety Latch .....	267	<b>Ignition Manual</b> .....	161	<b>Insulation, Thermal Wiring</b> .....	582
<b>Hood Scoop</b> .....	264	<b>Ignition Module Insulating Mounts</b> .....	479	<b>Insulation, Under Dash</b> .....	8
Hood Scoop Decal .....	205	<b>Ignition Noise Filter</b> .....	477	<b>Insulation, Wire Temperature Sending</b> .....	410
Hood Seal, Radiator Support .....	400	<b>Ignition Points</b> .....	481	<b>Insulator, Condenser</b> .....	431
Hood to Cool Weatherstrip .....	269	<b>Ignition Power Grid</b> .....	479	<b>Insulator, Door Rod</b> .....	293
Hook, Coat Hangar .....	65	<b>Ignition Switch</b> .....	480-481	<b>Insulator, Firewall</b> .....	10
Hook, Rear Seat Floor .....	281	<b>Ignition Switch Actuator Sector Gear</b> .....	102	<b>Intake Block Off Plate</b> .....	525
Hook, Assembly .....	121	<b>Ignition Switch Bezel Nut Tool</b> .....	102	<b>Intake Manifold</b> .....	463-464, 508
Hook Button .....	116, 117	<b>Ignition Tester</b> .....	480	<b>Intake Manifold Bolts</b> .....	463
Horn Button Contacts .....	121	<b>Ignition Wire Separators</b> .....	489	<b>Intake Manifold Fitting</b> .....	463
Horn Button, Steering Wheel .....	120	<b>Ignition, Fuel Tank Anti-Squeak</b> .....	497	<b>Intake Manifold Gasket</b> .....	463
Horn Cap .....	120	<b>Ignition/Trunk Key Cover</b> .....	291	<b>Intake Manifold Washer Set</b> .....	463
Horn Cap Emblem .....	120	<b>Impact Absorber, Rear Bumper</b> .....	253	<b>Intake, Air</b> .....	461
Horn Cap Mounting Ring .....	121	<b>Impact Bar, Bumper</b> .....	253	<b>Intake, Cold Air</b> .....	461
Horn Cap Retainer .....	121	<b>Indicator Light</b> .....	92	<b>Interior Door Grab Handle</b> .....	59
<b>Horn Mounting Bolt</b> .....	121	<b>Indicator Set, Hi-Beam</b> .....	72	<b>Interior Door Panel</b> .....	44-51
Horn Relay .....	121	<b>Infer Door Hardware Mounting Set</b> .....	220	<b>Interior Fastener Set</b> .....	53
Horn Relay Wiring Harness Pigtail .....	121	<b>Infer Door Lock Rod</b> .....	293	<b>Interior Hand Removal Tool</b> .....	56
Horseshoe Shifter Assembly .....	549	<b>Infer Door Panel Carpet</b> .....	8	<b>Interior Manual</b> .....	165
Horseshoe Shifter Base .....	549	<b>Infer Door Panel Retainer</b> .....	54	<b>Interior Manuals</b> .....	165
Horseshoe Shifter Assembly .....	549	<b>Infer Door Window Sash Channel</b> .....	220	<b>Interior Paint</b> .....	164
<b>Hose Adapter, Coolant</b> .....	404	<b>Infer Door Quarter Frame</b> .....	282	<b>Interior Rear View Mirror Bracket</b> .....	63
<b>Hose Clamp Pliers</b> .....	404	<b>Infer Glove Box</b> .....	106	<b>Interior Rear View Mirror Screw</b> .....	63
<b>Hose Clamp, Heat Shrink</b> .....	404	<b>Infer Heater Case Assembly</b> .....	424	<b>Interior Rear View Mirror Support</b> .....	63
<b>Hose Clamps</b> .....	319	<b>Infer Quarter Lower Patch Panel</b> .....	281	<b>Interior Screw Set</b> .....	53
<b>Hose Marking Ink</b> .....	497	<b>Infer Rear Body Panel</b> .....	308	<b>Interior Upholstery Kit</b> .....	16-19
<b>Hose Set, Rack and Pinion Power Steering</b> .....	322	<b>Infer Rear View Mirror</b> .....	62	<b>Intermediate Steering Shaft</b> .....	324
<b>Hose Stamps</b> .....	497	<b>Infer Sail Panel</b> .....	68		
<b>Hose, AC Compressor</b> .....	429	<b>Infer Tie Rod Boot</b> .....	327		
<b>Hose, AC Condenser to Dryer</b> .....	431	<b>Input Shaft Gear Roller</b> .....	560		
<b>Hose, AC Duct</b> .....	424	<b>Insert, Console Shift Plate</b> .....	128		
<b>Hose, Air Cleaner</b> .....	457	<b>Insert, Door Pull Handle</b> .....	55		
<b>Hose, Air Injection</b> .....	525	<b>Insert, Grill</b> .....	218		
<b>Hose, Brake</b> .....	372	<b>Insert, Grill, Wheel</b> .....	497		
<b>Hose, Coolant Bypass</b> .....	404	<b>Insert, Molding Channel Quarter Vertical</b> .....	218		
<b>Hose, Cool Induction Air Cleaner</b> .....	455	<b>Insert, Motor Mount</b> .....	436		
<b>Hose, Evaporator Case Drain</b> .....	425	<b>Insert, Rally Sport Grill Vertical Divider</b> .....	250		
<b>Hose, Fuel</b> .....	504	<b>Insert, Rally Wheel</b> .....	383-384		
<b>Hose, Headlamp Washer</b> .....	229	<b>Insert, Rear Storage Box</b> .....	104		
<b>Hose, Heater</b> .....	405	<b>Insert, Shift Plate</b> .....	128		
<b>Hose, PCV Valve</b> .....	445	<b>Inserts, Rear Bumper Guard</b> .....	253		
<b>Hose, Power Brake</b> .....	370	<b>Inspection Sheet, Pre-Delivery</b> .....	204		
<b>Hose, Power Steering</b> .....	323	<b>Inspection Stamp</b> .....	170, 497		
<b>Hose, Radiator</b> .....	404-405	<b>Installation Kit, T-56 Transmission</b> .....	555		
<b>Hose, Radiator Overflow</b> .....	402	<b>Installation Kit, Upholstery</b> .....	16-18		
<b>Hose, Tank to Filler Neck</b> .....	498	<b>Installation Set, Automatic Transmission Cable</b> .....	547		
<b>Hose, Water Pump Bypass</b> .....	415	<b>Installation Set, Bolt Ring &amp; Pinion</b> .....	357		
<b>Hose, Windshield Washer</b> .....	274	<b>Installation Set, Horseshoe Shifter</b> .....	547		
<b>Housing, Ashtray</b> .....	105	<b>Installation Set, Upholstery</b> .....	37, 63		
<b>Housing, Back-Up Lamp</b> .....	240	<b>Instruction Card, Seat Belt</b> .....	201		
<b>Housing, Convertible Rear Speaker</b> .....	99	<b>Instruction Card, Super Air Lift</b> .....	201		
<b>Housing, Converter Top Switch</b> .....	101-102	<b>Instruction Sleeve, Ignition</b> .....	201		
<b>Housing, Dome Lamp</b> .....	61	<b>Instruction Tag, Headlight</b> .....	201		
<b>Housing, Headlamp</b> .....	230	<b>Instruction Tag, Luggage Rack</b> .....	203		
<b>Housing, License Lamp</b> .....	240	<b>Instructions, Cruise Control</b> .....	202		
<b>Housing, Rear Axle</b> .....	354	<b>Instructions, Steering Operating</b> .....	202		
<b>Housing, Reverse Lamp</b> .....	250	<b>Instrument Carrier Panel</b> .....	72-73		
<b>Housing, Tail Lamp</b> .....	237	<b>Instrument Cluster</b> .....	80-83		
<b>Housing, Vigilite Bezel Fiber Optic Lamp</b> .....	230	<b>Instrument Cluster Brace</b> .....	74		
<b>Hub, Wood Wheel</b> .....	121	<b>Instrument Cluster Case</b> .....	74		
<b>Hubcap</b> .....	383-392, 394	<b>Instrument Cluster Lamp Socket</b> .....	75		
<b>Hydraulic Clutch Assembly, LSI/LTI</b> .....	557	<b>Instrument Cluster Wiring Harness</b> .....	576		
<b>Hydraulic Hose Assembly, Convertible Top</b> .....	287				
<b>Hydraulic Release Bearing</b> .....	557				
<b>Hydraulic System Bleeder Set</b> .....	287				



# Product Index

Knob, Headlamp Switch	100
Knob, Heater Control Switch	427
Knob, Radio Control	97
Knob, Seat Adjuster	40
Knob, Shift	551, 562-563
Knob, Turn Signal Lever	111
Knob, Vent Pul	425
Knob, Windshield Wiper Switch	101
Knock Sensor Connector	576

## L

Lacing, Convertible Top Header	286
Lamp Bulbs	228, 231
Lamp Flasher	228
Lamp Indicators	228
Lamp Lens Gasket Set, Exterior	238
Lamp Socket Plate, Instrument Panel	72
Lamp Socket, Instrument Cluster	75
Lamp, Driving	234
Lamp, Fog	234
Lamp, License	240
Lamp, Mini with Bezel	241
Lamp, Park	232-233
Lamp, Side Marker	234-235
Lamp, Tail	239
Lamp, Third Brake	241
Lamp, Underhood	268
Latch & Button, Console	125
Latch Pin/Collar, Hood	267
Latch, Door	292
Latch, Console Door	125
Latch, Convertible Top	286-287
Latch, Fold Down Rear Seat	40
Latch, Hood Safety	267
Latch, Liftgate/Trunk Lid	306
Latch, Trunk	306
Lead Distributor	478
Lead, Electronic Speed Sensor	440
Leaf Spring Anchor Plate Bolt	333
Leaf Spring Bracket Brace	299
Leaf Spring Bushing Set	350-351
Leaf Spring Conversion	350
Leaf Spring Conversion Shock Extenders	345
Leaf Spring Decal	203
Leaf Spring Eye Bolt	349-350
Leaf Spring Front Bracket Nut	350
Leaf Spring Installation Set, Rear	349
Leaf Spring Liner	349
Leaf Spring Mounting Brackets	350
Leaf Spring Pad	349
Leaf Spring Shackles Set	351
Leaf Spring Shackles	351
Leaf Spring U-Bolt	349-350
Leaf Springs	349
LED Lamp Assembly	241
LED Mini Lamp with Bezel	241
LED Tail Lamp Conversion	239
Lens, AC/Heater Control Panel	427
Lens, Back-Up Lamp	236, 240
Lens, Console Gauge	123
Lens, Console Rear Lamp	64
Lens, Dash Clock	74
Lens, Dash Gauge	74
Lens, Dome Lamp	60
Lens, Fuel Gauge	74
Lens, Heater and AC Control	427
Lens, Instrument Panel Center Lamp	240
Lens, License Plate Lamp	240
Lens, Quarter Dome Lamp	60
Lens, Radio	96
Lens, Rear Console Lamp	129
Lens, Reverse Lamp	236
Lens, Shift Plate	235
Lens, Side Marker	235
Lens, Speedometer	74
Lens, Tail Lamp	236-237
Lenses, Park Lamp	232
Lever, Accelerator Throttle	133
Lever, Heater Control	427
Lever, Park Brake	127
Lever, Shift	546
Lever, Shift Detent	547
Lever, Steering Column	111

Lever, Tilt Wheel Release	111
Lever, Turn Signal	111
License Lamp Assembly	240
License Lamp Gasket	240
License Lamp Housing	240
License Lamp Socket	240
License Plate	140, 142, 156
License Plate Bolt	156
License Plate Screws	260, 495
License Plate Fasteners	155
License Plate Frame	140-141, 157
License Plate Hardware	260
License Plate Lamp Lens	240
License Plate Screw	317
License Plate Spacer	260
License Plate, Yenko	141
Lid, Air Cleaner Open Element	456-457
Lid, Ashtray	125
Lid, Center Console	124
Lift Gate/Trunk Lock Solenoid	307
Lift Gate Striker	240
Lift Gate Support Strut	307
Lift Gate/Trunk Lid Latch	306
Lifter Valley Oil Baffle	463
Lifters	468
Light Bulb Covers	92
Light, Dome	90
Lighter, Cigarette	104
Lighting Harness	570
Limited Slip Differential	354
Line Clamps	489, 504
Line, Fuel	506
Line, Fuel Pump to Carburetor	503
Line, Fuel Return	506
Line, Fuel Vapor	506
Line, Power Steering Return	323
Lines, Brake	374
Lines, Engine Oil Cooler	474
Linkage, Neutral Safety Switch	103
Linkage, Clutch	559
Linkage, Column Shift	552
Linkage, Cross Ram Carburetor	507
Linkage, Door	293
Linkage, Fuel	566
Liquid Bleed Valve	431
Literature, Automotive	158-167
Lock Conversion Set, Power	579
Lock Cylinder Retainer	291
Lock Cylinder Set	290
Lock Cylinder, Glove Box	107
Lock Cylinder, Outer Door	291
Lock Housing Cover	110
Lock Plate Cover	110
Lock Ring, Fuel Sending Unit	496
Lock Rod Clips	318
Lock, Floor Stowage	291
Lock Strip, Windshield Seal	222
Lock Switch Panel	58
Lockup Kit, Torque Converter	540-541
Lock, Axle Shaft	356
Lock, Door	290
Lock, Floor Stowage Compartment	291
Lock, Fuel Door	499
Lock, Glove Box	107
Lock, Trunk	290, 306
Locking Differential	354
Lockout Assembly, Reverse	560
Lockout, Power Window Advance	74
Locks, T-Top	215
Louvers, Hood	265
Louvers, Quarter Panel	224
Louvers, Rear Window	258
Low Fuel Warning Module	79
Low Pressure Hydraulic Brake Switch	371
Lower Control Arm	330-331, 351
Lower Control Arm Bolt	329
Lower Dash Steering Column Cover	73
Lower Dash Vent Bezel	426
Lower Deck Filler Panel	298
Lower Door Hinge	289
Lower Door Hinge Arm	289
Lower Door Hinge Roller Detent Repair Set	289
Lower Door Hinge Spring	289
Lower Door Panel	47

Lower Door Weatherstrip Seal	213
Lower Heat Stove	523
Lower Kick Down Rod	548
Lower Linkage Rod	286
Lower Outer Door Skin	288
Lower Patch Panel, Inner Quarter	281
Lower Rear Shock Bolt	345
Lower Steering Column Cover	74
Lower Trailing Arms	351
Lowering Set, Suspension	334, 343
LS Engine Conversion Set	438
LS Engine Cover	453
LS Engine Mount Set	438
LS Valve Cover Adapters	452
LS Valve Cover Conversion Set	452
Lubricant, Rear Axle	317
Lubricant, Stick	353
Lubricant, Weatherstrip	216
Lug Nut, Wheel	383, 390-391, 395
Luggage Rack Instruction Tag	203

## M

Magnetic Door Guard	180
Maintenance Decal	202
Manifold Bolt	524
Manifold, Carb Pipe Stud	523
Manifold, AC	429, 431
Manifold, Exhaust	522
Manifold, Intake	463-464
Manual Brake Conversion	368
Manual Brake Cable	515
Manual Brake Cable Mount Hardware	515
Manual Convertible Hold Down Latch	286
Manual Shift Knob	562-563
Manual Shift Tunnel	131
Manual Steering Gearbox	324
Manual Transmission	554-555
Manual Transmission Fluid	559
Manual Transmission Gasket Set	559
Manual Transmission Pilot Bushing	559
Manual Transmission TCS Switch	561
Manual, Bodywork	161
Manual, Carburetor	164
Manual, Chassis & Suspension	167
Manual, Engine	162-163
Manual, Exhaust	165
Manual, Fuel Injection	166
Manual, General Repair	159
Manual, Interior	165
Manual, Paint & Body	165
Manual, Plumbing	167
Manual, Shop Service	158
Manual, Transmission	166
Manual, Tuning	166
Manual, Tuning	166
Manual, Welding	166
Manual, Wiring	166
Marker Lamp, Side	232, 234-235
Master Cylinder Clevis Pin	337
Master Cylinder Cover	130
Master Cylinder Cover Diaphragm	370
Master Cylinder Pushrod	370
Master Cylinder, Brake	368
Master Cylinder, Clutch	558
Master to Booster Nut	370
Master/Slave Cylinder, Clutch	557
Mat Tape	74
Mat, Trunk	302-303
Mechanic Stethoscope	432
Mechanical Speedometer Conversion	541
Mechanics Seat	178
Medallion, Side Marker	234
Memory Circuit Retainer	569
Metal Weld Epoxy	535
Metering Valve, Disc Brake	371
Mini-Tub Conversion Kit	340, 348
Mirror Bracket Mount Screw	294
Mirror Glass, Bullet-Style Door Mirror	294
Mirror Hardware, Interior	319
Mirror Mounting Bracket	294-295
Mirror Set, Underhood	269
Mirror, Inner Rear View	62
Mirror, Outer Door	294
Modulator Valve, Transmission	543

# Product Index

Module, Coolant Level .....	401
Module, Ignition Control .....	479, 481, 484
Molding, Low Fuel Warning .....	79
Molded Carpet with Underlay .....	7
Molding Clip Installation Tool .....	218
Molding Clip Nuts .....	315-316
Molding Clips .....	315
Molding Hardware .....	219
Molding Tool .....	218
Molding, Armrest Base .....	55
Molding, Convertible Inner Header .....	287
Molding, Convertible Well .....	224, 286
Molding, Convertible Windshield Header .....	286
Molding, Dash Pad Trim .....	71
Molding, Door Front Pillar .....	223
Molding, Door Reveal .....	223
Molding, Drip Rail .....	224
Molding, Fender Corner Edge .....	223
Molding, Grill .....	222
Molding, Header Panel .....	222
Molding, Headliner .....	65
Molding, Headliner Corner Trim .....	65
Molding, Hood Ledger .....	223
Molding, Interior Panel .....	53
Molding, Outer Ledger Reveal .....	223
Molding, Pillar Post .....	65
Molding, Protective Shield .....	223
Molding, Quarter Vertical Chrome .....	223
Molding, Rear Panel .....	225
Molding, Rear Window .....	222
Molding, Rocker Panel .....	225
Molding, Roof Drip .....	224
Molding, T-Top Outer Corner .....	223
Molding, Tail Lamp .....	238-239
Molding, Vinyl Top .....	224
Molding, Wheel Opening .....	225
Molding, Window Trim .....	224
Molding, Windshield .....	222
Moldings, Interior T-Top .....	214
Mono-to-Multi-Leaf Rear Susp. Conversion .....	349
Morse Cable Bracket .....	513
Motor Mount Bolt Set .....	437
Motor Mount Shims .....	437
Motor Mounts .....	338, 436-438, 538
Motor Slide, Rear Hatch .....	407
Motor, AC Blower .....	287
Motor, Convertible Top .....	407
Motor, Electric Cooling Fan .....	407
Motor, Heater Blower .....	422, 426
Motor, Power Window .....	578
Motor, RS Headlamp Door Actuator .....	244, 247
Motor, Windshield Wiper .....	275
Mount Plate, Exhaust Hanger .....	527
Mount, Coil Spring .....	337, 343
Mount, Coilover .....	344
Mount, Front Bumper Corner .....	255
Mount, Radio .....	96
Mount, Rear Shock Upper .....	345
Mount, Transmission .....	538-539
Mounting Bolts, Convertible Manual Latch .....	287
Mounting Bucket, Headlamp .....	230
Mounting Hub Adapter .....	116-117
Mounting Hub, Steering Wheel .....	194
Mounting Kit, Mirror .....	294
Mounting Pin, Accelerator Pedal .....	133
Mounting Plate, Auto Shift Lamp .....	127
Mounting Plate, Console Gauge .....	123
Mounting Plate, Fuel Pump .....	500
Mounting Plate, Fuel/Volt Gauge .....	74
Mounting Plate, Shift Lamp .....	129
Mounting Ring, Horn Cap .....	409
Mounting Rod, Electric Fan .....	421
Mounting Set, Back-Up Switch .....	569
Mounting Set, Rally Sport Actuator Shield .....	245
Mounts, Ignition Module .....	479
Muffler .....	528-533
Muffler Heat Shield .....	530, 537
Multi-Leaf Spring Clamp Rebuild Kit .....	349
Multi-Meter Tool .....	433

<b>N</b>	
Neck, Fuel Filler .....	498
Neutral Safety Switch Actuator .....	103

Neutral Safety Switch Linkage Rod .....	103
Neutral Safety Switch Pivot .....	103
Neutral Safety Switch Wiring Harness .....	103
Neutral Safety/Back-Up Switch Relocation Kit .....	103
Neutral Safety/Back-Up Lamp Switch .....	103, 560
New Car Salesman Brochure .....	159
New Car Window Sticker .....	204
New Vehicle Build Sheet .....	204
Nipple, Heater to Intake Manifold Hose .....	229
Nozzle, Headlamp Washer .....	229
Nozzle, Windshield Washer .....	274
Nut & Washer, Pitman Arm .....	324
Nut, Retaining, Tail Lamp .....	238
Nut Set, Brake Rotor/Drum .....	329
Nut, Alternator Pulley .....	494
Nut, Antenna Bezel .....	93
Nut, Brake Booster to Firewall .....	370
Nut, Fuel Inlet .....	512
Nut, Headlamp Beam Adjusting .....	229
Nut, Headlamp Bezel Anchor .....	242
Nut, Headlamp Bezel Mount .....	242
Nut, Headlamp Switch Mounting .....	100
Nut, Headlamp Washer Nozzle .....	229
Nut, Ignition Bezel .....	102
Nut, Leaf Spring Front Bracket .....	350
Nut, Master to Booster .....	370
Nut, Park Brake Adjustment .....	137, 380
Nut, Pitman Arm Shaft Lash Adjuster .....	324
Nut, Power Steering Pulley .....	322
Nut, Radiator Mount Well .....	401
Nut, Radio Mount Shaft .....	27
Nut, Side Marker Lamp .....	303
Nut, Spark Plug Wire .....	193
Nut, Speed .....	903
Nut, Steering Wheel Hub .....	121
Nut, Wheel Lug .....	383, 387-391, 394-395

<b>O</b>	
O-Ring Set, AC .....	431
Oil Breather Cap .....	446
Oil Bypass Eliminator .....	475
Oil Catch Can .....	474
Oil Cooler, Radiator .....	474
Oil Cooler, Transmission .....	545
Oil Deflector, Valve Train .....	468
Oil Dipstick .....	473
Oil Dipstick Tube Seal .....	473
Oil Fill Cap .....	446
Oil Filler Cap Decal .....	202
Oil Filler Tube .....	473
Oil Filter .....	475
Oil Filter Adapter .....	475
Oil Filter Bypass Valve .....	475
Oil Filter Bypass Valve Bolts .....	475
Oil Filter Canister .....	475
Oil Filter Cover .....	475
Oil Filter Filtermag .....	475
Oil Filter Fitting Connector .....	475
Oil Filter Prefilter Screen .....	475
Oil Filter Wrench .....	475
Oil Line Plug .....	131
Oil Line Fitting .....	131
Oil Pan .....	470-471
Oil Pan Baffle .....	470-471
Oil Pan Battery Cable Clip .....	472
Oil Pan Bolts .....	472
Oil Pan Drain Plug .....	472
Oil Pan Drain Plug Gasket .....	472
Oil Pan Gaskets .....	470-471
Oil Pan Hardware Set .....	471
Oil Pan Windage Tray .....	471
Oil Pressure Line, Console Gauge .....	131
Oil Pressure Sending Unit .....	475
Oil Pressure Switch Socket .....	475
Oil Pump .....	471
Oil Pump Cover .....	471
Oil Pump Driveshaft .....	471
Oil Pump Pressure Sensor .....	470
Oil Pump Primer Tool .....	432
Oil Pump to Distributor Shaft .....	478
Oil Return Screen .....	463
Oil Supply Adapter Plate .....	473
Oil, Engine .....	474

<b>Orifice Tube .....</b>	<b>431</b>
Ornament, Rally Wheel Cap .....	383-386
Outer Door Handle .....	292
Outer Door Handle Bumper .....	292
Outer Door Handle Spring Clip .....	292
Outer Door Lock Cylinder .....	291
Outer Door Lock Cylinder Gasket .....	291
Outer Door Mirror .....	294-295
Outer Door Mirror Bracket .....	292
Outer Door Skin .....	288
Outer Headlamp Door, Rally Sport .....	243
Outer Ledger Reveal Molding .....	223
Outer Rear Body Panel .....	308
Outer Wheelhouse .....	277
Outer Wheelhouse Panel .....	294
Overflow Bottle, Radiator .....	402
Owner's Manual .....	159
Oxygen Sensor .....	518
Oxygen Sensor Fitting .....	523
Oxygen Sensor Plug .....	523
Oxygen Sensor Socket .....	523
Oxygen Sensor Wrench .....	523

<b>P</b>	
Pad Set, Rear Leaf Spring .....	349
Pad, Armrest .....	54-55
Pad, Convertible Top .....	286
Pad, Dash .....	70-71
Pad, Front Door Window Glass Guide .....	220-221
Pad, Leaf Spring .....	349
Pad, Park Brake Pedal .....	139
Pad, Radiator Mounting .....	401
Pad, Rear Spring .....	349
Paint & Body Manual .....	165
Paint and Body Markers .....	170
Paint Gauge Tool .....	312
Paint Masking Set, SS Wheel .....	384
Paint Seal Gasket Set .....	216
Paint Spray Gun .....	187
Paint, Brake Caliper .....	382
Paint, Clear Gloss .....	187
Paint, Coating .....	183, 186
Paint, Interior Door .....	345
Paint, Exhaust .....	186
Paint, Factory Black .....	185
Paint, Metal-Mimic .....	185
Paint, Rubber Undercoating .....	186
Paint, Rust Prevention .....	182
Paint, Shock Absorber .....	384
Paint, Trunk .....	185
Paint, Undercoating .....	183
Paint, Underhood .....	187
Paint, Wheel Coating .....	187
Paint, Wrinkle Finish .....	186
Pan, Oil .....	470
Pan, Transmission .....	542
Panel Kit, Interior Door .....	47
Panel Retainer Clips .....	319
Panel, Cowl .....	272
Panel, Dash .....	276
Panel, Firewall .....	276
Panel, Floor Pan to Firewall Extension .....	278
Panel, Gauge Mount .....	84
Panel, Header .....	260-261
Panel, Instrument Carrier .....	73
Panel, Interior Door .....	21, 44-51
Panel, Kick .....	99
Panel, Rear Seat Back .....	280
Panel, Rear Side .....	46-47
Panel, Rocker .....	281-282
Panel, Shift Tunnel .....	281
Panel, Side .....	351-352
Park Brake Adjusting Pull Spring .....	380
Park Brake Adjustment Nuts .....	137, 380
Park Brake Cable .....	379
Park Brake Cable Bracket .....	380
Park Brake Cable Connector .....	379, 379
Park Brake Cable Retainer .....	379
Park Brake Cable Tension Spring .....	380
Park Brake Guide Bar Spring .....	380
Park Brake Lamp Switch .....	380
Park Brake Lamp Switch Clip .....	380
Park Brake Lever .....	127

# Product Index

**INDEX, POLICIES & ORDER FORMS**

Park Brake Pre-Load Spring	380
Park Brake Release Grommet	380
Park Brake Release Handle	380
Park Brake Shield	379
Park Brake Shoe	379
Park Lamp Assembly	232
Park Lamp Bumper	233
Park Lamp Housing	233
Park Lamp Housing Brackets	233
Park Lamp Lens	232
Park Lamp Lens Gasket	232
Park Lamp Lens Screws	233
Park Lamp Lens Trim	233
Park Lamp Mounting Hardware	233
Park Lamp Socket	233
Park Lamp Trim Bezel	233
Park Lamp Trim Ring	233
Park Mat	180
Park/Neutral Relay Set	581
Parking Brake	139
Parking Brake Cable Equalizer	380
Parking Brake Levers	379
Parking Brake Pedal Pad	139
Parking Brake Release	380
Parking Brake Trim Plate	139
Parking Guide System, Laser	178
Part Floor Pan	278-279
Partition Holder, Fold Down Rear Seat	40, 69
Partition, Fold Down Rear Seat	40, 69
Parts Tray	178
Patch Panel, Door Jamb	281
Patch Panel, Firewall Body Mount	276
Patch Panel, Floor Pan	278-279
Patch Panel, Front Fender	271
Patch Panel, Quarter	296
Patch, Repair	311
Pawl, Door Lock	491
PCV Clamp	445
PCV Hose CIP	445
PCV Valve	445
PCV Valve Hose	445
Pedal Brackets	139
Pedal Bushing	137
Pedal Cover	133
Pedal Pad, Brake/Clutch	132, 134-135, 139
Pedal Pin, Brake/Clutch	137
Pedal Retainer	137
Pedal Rod Support	137
Pedal, Accelerator	132, 138
Pedal, Brake	278-279
Pedal, Clutch	136
Pedestal, Gauge Mount	84
Pickle Fork Tool Set	329
Pigtail, Headlamp	229
Pigtail, Voltage Regulator	494
Pillar Post Hardware	65
Pillar Post Molding	65
Pilot Bolt, Hood Latch	267
Pin, Hat / Lapel	142
Pin, Hood	264
Pinion Bumper, Rear Axle	356
Pinion Gear Crush Sleeve	356
Pinion Wedges	356
Pipe, Vacuum Booster	463
Pipes, Exhaust Manifold	526
Piston	365
Pitman Arm	326
Pitman Arm & Washer Set	324
Pitman Arm Puller	329
Pitman Arm Shaft Lash Adjuster Nut	324
Pivot Ball, Bellcrank	558, 560
Pivot Bolt, Convertible Top	287
Pivot, Neutral Safety Switch	103
Plastic Repair Set	181
Plastic Weld Epoxy	311
Plastic Wire Harness Strap	583
Plate, Carburetor Linkage	513
Plate, Intake Block Off	525
Plate, Oil Supply Adapter	473
Plate, Radiator Cover	400
Plate, Rear Console Cover	125
Plate, Shift Boot Retainer	130
Plate, Shift Lens Backing	129
Plate, Sun Visor Delete	63

Plate, Throttle Body	515
Pliers, Emergency Brake Cable Release	382
Pliers, Floor Clamp	404
Pliers, Spunk Plug Terminal	281
Plug, Body	281
Plug, Floor Pan	281
Plug, Front Door Inner Panel Access Hole	59
Plug, Oxygen Sensor	523
Plug, Positioning Differential Fill	353
Plug, Rear Axle Housing Drain	526
Plug, Smog/Air Block Off	524
Plug, Trunk Pan	305
Plumbing Manual	167
Plumbing Set, Engine Coolant	405
Points, Ignition	481
Polish/Wax	171, 172
Polyurethane Bushing Set	337
Positive Post Battery Tag	198
Positraction Decal	200
Poster	151, 153
Power Accessory Lead Wire	576
Power Antenna Relay	93
Power Brake Check Valve	370
Power Brake Tube	370
Power Disc Brake Tag	203
Power Door Lock Actuator	578
Power Door Lock Conversion Kit	578
Power Door Lock Position Sensor	293
Power Door Lock Switch	58
Power Lock Conversion Set	579
Power Reverse Opening Hood Hinge Set	265
Power Seat Switch	40
Power Steering Adjuster Bracket	322, 412-413
Power Steering Belt	321
Power Steering Bracket	321
Power Steering Bracket Bolt	321
Power Steering Cap	321
Power Steering Conversion Hose Set	324
Power Steering Conversion Set	324
Power Steering Fluid	325
Power Steering Fluid Reservoir	320, 322
Power Steering Hose	322, 323
Power Steering Hose Retainer	321, 323
Power Steering Inlet Hose Clamp	323
Power Steering Mounting Stud	322
Power Steering Pulley	322, 440
Power Steering Pulley Nut	322
Power Steering Pump	320-321
Power Steering Pump Rebuild Set	322
Power Steering Return Hose Clamp	323
Power Steering S-Brace	321
Power Valve, Carburetor	511
Power Window Conversion Set	578
Power Window Grommet	578
Power Window Harness Boot	578
Power Window Master Bracket	578
Power Window Relay	578
Power Window Switch Retainer	58
Power Window Wiring Harness	576
Power Window/Door Lock Switch	58
Powerglide Shifter Conversion	547
Powerglide Shifter Conversion Rod	546
Pre-Delivery Inspection Sheet	204
Pressure Plate to Flywheel Bolt	558
Pressure Circuit Board Connector	75
Prop Rod, Hood	267
Proportioning Valve	371
Proportioning Valve Block	371
Proportioning Valve Bracket	371
Protective Side Molding	225
Protector Sleeves, Spark Plug Boot	488
Pulley Nut, Power Steering	417
Pulley Reinforcement, Water Pump	417
Pulley Set	440-441
Pulley, Alternator	494
Pulley, Belt Tensioner	413
Pulley, Crankshaft	439-440
Pulley, Power Steering Pump	322
Pulley, Smog Pump	524
Pulley, Water Pump	417
Pump Assembly, Convertible Top	287
Pump, EFI Fuel	518
Pump, Oil	471
Pump, Smog/AIR	525

Pump, Water	414-415
Pump, Windshield Washer	275
Push Start Warning Decal	202
Pushrod Boot, Clutch	558
Pushrod Tool	432
Pushrod, Clutch	559
Pushrod, Fuel Pump	500
Pushrod, Manual Brake Master Cylinder	370
Pushrods	468

**Q**

Quarter Dome Lamp Bezel	61
Quarter Dome Lamp Lens	60
Quarter Dome Lamp Socket	61
Quarter Panel	296-297
Quarter Panel & Door Frame	282
Quarter Panel Brace	282
Quarter Panel Louver Mount Template	224
Quarter Panel Louvers	285
Quarter Panel Reinforcement	282
Quarter Panel Trunk Opening Corner Stiffener	304
Quarter Panel Water Shield	49
Quarter Sail Panel Fastener	68
Quarter Vertical Chrome Moldings	223
Quarter Vertical Molding Channel Insert	218
Quarter Window Air Attachment/Roller Assembly	218
Quarter Window Glass	217-218
Quarter Window Lower Guide Roller	221
Quarter Window Regulator	221
Quarter Window Track Hardware	218
Quarter Window Tracks	218
Quarter Clock Conversion	578
Quick Release Battery Cable Bolts	267
Quick Release License Plate Bracket	261

**R**

Rack and Pinion Steering Shaft	325
Rack and Pinion Steering System	325
Radiator	398-399
Radiator Cap	401-402
Radiator Cover Plate	400
Radiator Fan Blade	400
Radiator Fan Shroud	400
Radiator Fan Switch	423
Radiator Hose	404-405
Radiator Hose Clamp	403
Radiator Hose Reducers	405
Radiator Lower Air Baffle	400
Radiator Mount Well Nut	401
Radiator Mounting Bolts	317
Radiator Mounting Nut	317
Radiator Opening X-Brace	261
Radiator Overflow Bottle	402
Radiator Overflow Hose	402
Radiator Overflow Hose Retainer	402
Radiator Overflow Jar Cap	402
Radiator Overflow Jar Retainer	402
Radiator Petcock	401
Radiator Retainer Pad	401
Radiator Support	261
Radiator Support Bushings	261
Radiator Support Filler Panel	400
Radiator Support to Hood Seal	400
Radiator Tag	401
Radiator Thermostat	419
Radiator/Cooling Fan Relay	410

**Radio** 94-95

**Radio Amplifier** 98

**Radio Antenna** 93

**Radio Color Bar** 92

**Radio Control Knob** 97

**Radio Delete Plate** 93

**Radio Faceplate** 76

**Radio Lens** 96

**Radio Module** 96

**Radio Mount** 96

**Radio Mount Shaft Nut** 97

**Radio Noise Suppressor** 97

**Radio Off Delay** 97

**Radio Retainer Screw** 97

**Radio Screen Protectors** 96

**Radio Support Bracket** 96

## Product Index

- Rag Joint ..... 108, 324  
Rat Gutter, Convertible ..... 286  
Rally Sport Actuator Bracket ..... 245  
Rally Sport Actuator Pin Clip ..... 244  
Rally Sport Actuator Shield ..... 245  
Rally Sport Clevis Pin Fastener Set ..... 244  
Rally Sport Decal ..... 205  
Rally Sport Electric Headlamp Door ..... 243  
Rally Sport Firewall Grommet ..... 245  
Rally Sport Front End Conversion ..... 247  
Rally Sport Grill ..... 248, 250  
Rally Sport Grill Vertical Divider Rubber Insert ..... 250  
Rally Sport Headlamp Bellcrank ..... 244  
Rally Sport Headlamp Bellcrank Bracket ..... 244  
Rally Sport Headlamp Bracket ..... 244  
Rally Sport Headlamp Bushing Set ..... 244  
Rally Sport Headlamp Conversion Kit ..... 246  
Rally Sport Headlamp Door Assembly ..... 243  
Rally Sport Headlamp Door Backing Plate ..... 243  
Rally Sport Headlamp Door Brackets ..... 243  
Rally Sport Headlamp Door Bumper ..... 243  
Rally Sport Headlamp Door Cover ..... 249  
Rally Sport Headlamp Door Hinge ..... 243  
Rally Sport Headlamp Door Hinge Bolt ..... 243  
Rally Sport Headlamp Door Mount ..... 244, 247  
Rally Sport Headlamp Door Opening Molding ..... 243  
Rally Sport Headlamp Door Stopper ..... 244  
Rally Sport Headlamp Limit Switch ..... 244  
Rally Sport Headlamp Motor Housing ..... 244  
Rally Sport Headlamp Output Arm ..... 244  
Rally Sport Headlamp Pivot Bolt ..... 243  
Rally Sport Headlamp Relay ..... 244  
Rally Sport Headlamp Relay Switch ..... 244  
Rally Sport Headlamp Repair Kit ..... 244  
Rally Sport Headlamp Return Cover ..... 243  
Rally Sport Headlamp Shoulder Washer Kit ..... 244  
Rally Sport Headlamp Wiring Diagram ..... 159  
Rally Sport Hose Strap Set ..... 245  
Rally Sport Inner Headlamp Door ..... 243  
Rally Sport Limit Switch Bracket ..... 244  
Rally Sport Lower Molding Set ..... 225  
Rally Sport Molding Clip ..... 225  
Rally Sport Molding Mount Template ..... 224  
Rally Sport Over Center Bracket / Spring Set ..... 244  
Rally Sport Park Lamp Wiring Grommet ..... 233  
Rally Sport Relay Board Assembly ..... 244  
Rally Sport Relay Mounting Bracket ..... 244  
Rally Sport Vacuum Actuator ..... 244  
Rally Sport Vacuum Headlamp Reservoir ..... 245  
Rally Wheel ..... 385-387  
Rally Wheel Center Caps ..... 383-386  
Rally Wheel Hubcap Ornament ..... 386  
Rally Wheel Instruction Decal ..... 200  
Rally Wheel Ornament Screw ..... 386  
Ramps, Vehicle ..... 180  
Ratchet Action Slider ..... 553  
Rear Ashtray ..... 105  
Rear Ashty Upholstery ..... 47  
Rear Axle ..... 354-355  
Rear Axle Bearing ..... 356-357  
Rear Axle Brake Hose Bracket ..... 373  
Rear Axle Bumper Bracket ..... 356  
Rear Axle Flange U-Bolt ..... 354  
Rear Axle Housing Drain Plug ..... 356  
Rear Axle Lubricant ..... 357  
Rear Axle Lubrication ID Tag ..... 356  
Rear Axle Shaft ..... 356  
Rear Body Lamp Wiring Harness ..... 575  
Rear Body Panel ..... 308  
Rear Body Panel Lock Support ..... 306  
Rear Brake Hose Mounting Bolt ..... 373  
Rear Brake Regulator Valve ..... 371  
Rear Bumper ..... 252-253, 257, 308  
Rear Bumper Black Out Decal ..... 209  
Rear Bumper Bracket ..... 254  
Rear Bumper End Gasket ..... 254  
Rear Bumper Guard ..... 252  
Rear Bumper Guard Bracket ..... 253  
Rear Bumper Guard Insert ..... 253  
Rear Bumper Impact Absorber ..... 253  
Rear Bumper Impact Bar ..... 253  
Rear Bumper Rivet ..... 255  
Rear Bumper Strips ..... 253  
Rear Bumperette ..... 252-253  
Rear Cargo Retainer ..... 307  
Rear Console Cover Plate ..... 125  
Rear Control Arm ..... 351  
Rear Convertible Side Well Panel ..... 407  
Rear Cross Rail ..... 308  
Rear Disc Brake Conversion ..... 359-363, 365-367  
Rear Door Glass Stop Bumper ..... 221  
Rear Drum Brake ..... 375  
Rear Drum Brake Spring ..... 377  
Rear End Cover ..... 357  
Rear End Housing ..... 340  
Rear End Main Cap Stud ..... 356  
Rear Hatch Decal ..... 205  
Rear Hatch Hinge Bolt ..... 307  
Rear Hatch Motor Nylon Guides ..... 307  
Rear Hatch Motor Slide ..... 307  
Rear Inner Body/Trunk Hinge, Convertible ..... 299  
Rear Inner Side Armrest Panels ..... 47  
Rear Inner Side Panel ..... 44-47  
Rear Inner Valance Panel ..... 308  
Rear Leaf Spring Eye Bolt ..... 350  
Rear Leaf Spring Installation Set ..... 349  
Rear Leaf Spring Shackles ..... 349  
Rear Leaf Spring Shock Plate ..... 350  
Rear Main Seal Adapter ..... 470  
Rear Panel Decal ..... 204  
Rear Panel Decal Insert ..... 194  
Rear Panel Molding ..... 225  
Rear Radio Speaker Cover ..... 99  
Rear Seat Back Panel ..... 280  
Rear Seat Brace ..... 280  
Rear Seat Floor Hook ..... 281  
Rear Seat Headrest ..... 385  
Rear Seat Shelf ..... 69  
Rear Seat Shelf Jute Padding ..... 69  
Rear Seat Speaker Shelf Extension ..... 298  
Rear Seat Speaker Shelf Panel ..... 298  
Rear Seat to Trunk Partitions ..... 69  
Rear Shock Reinforcement Plate ..... 305  
Rear Shock Tower Brace ..... 352  
Rear Shock Tower Panel ..... 305  
Rear Shock Tower Support Panel ..... 305  
Rear Side Flare ..... 256  
Rear Speaker Enclosure Retainer ..... 99  
Rear Speaker Mounting Screw ..... 99  
Rear Spoiler ..... 257  
Rear Spoiler Emblem ..... 194  
Rear Spring Pad Set ..... 349  
Rear Spring Shackles ..... 351  
Rear Storage Box Insert ..... 106  
Rear Suspension ..... 348-354  
Rear Upper Shock Mount ..... 345  
Rear Valance Panel ..... 308  
Rear View Mirror Adhesive ..... 63  
Rear View Mirror Bracket ..... 63  
Rear View Mirror Bushing ..... 63  
Rear View Mirror Mount ..... 63  
Rear Wheelhouse Panel, Rear (Mini Tub) ..... 348  
Rear Window Defogger Wiring Harness ..... 575  
Rear Window Louvers ..... 258  
Rear Window Molding ..... 222  
Rear Window Spoiler ..... 244  
Rear Window Track Upper Plate ..... 220  
Rear Window Wing ..... 258  
Rebuild Set, Brake Master Cylinder ..... 370  
Rebuild Set, Power Steering Pump ..... 322  
Receiver Bracket, AC ..... 431  
Receiver, Air Pressure ..... 431  
Receiver/Dryer, AC ..... 431  
Recovery Tank ..... 402  
Reducer, Header Collector ..... 521  
Reflector, Dome Lamp ..... 61  
Regulator, Rear Window ..... 220  
Regulator, Fuel Pressure ..... 502-503  
Reinforcement, Ring, Shift Hole ..... 281  
Reinforcement, Grill ..... 222  
Reinforcement, Quarter Panel ..... 282  
Relay and Fuse ..... 229  
Relay Box Assembly, Rally Sport ..... 579  
Relay Pulling Tool ..... 579  
Relay, AC ..... 423  
Relay, Coil Induction ..... 455  
Relay, Electric Water Pump ..... 581  
Relay, Fast Idle Cut-Off ..... 504  
Relay, Fog Lamp ..... 234  
Relay, Fuel Evaporation ..... 504  
Relay, Fuel Pump ..... 504  
Relay, Headlamp ..... 229  
Relay, Power Antenna ..... 93  
Relay, Power Window ..... 578  
Relay, Radiator/Cooling Fan ..... 410  
Relay, Starter ..... 491  
Relay, Tail Lamp ..... 543  
Release Cable, Slave Vacuum Headlamp ..... 400  
Release Handle, Park Brake ..... 380  
Release Lever, Tire Wheel ..... 111  
Relocation Set, Neutral Safety/Back-Up Switch 103  
Remote Control Thermostat ..... 352  
Remote Control Battery Disconnect ..... 580  
Remote Master Disconnect ..... 580  
Remote Mirror Bezel Retainer ..... 295  
Remote Starter Solenoid ..... 491  
Remote Starter Switch Tool ..... 453  
Repair Kit, Exhaust ..... 529  
Repair Kit, Hatch Pull-Down ..... 307  
Repair Manual ..... 159  
Repair Patch ..... 311  
Repair Set, Floor Pan ..... 311  
Repair Set, Rag Joint ..... 324  
Repair Set, Speedometer Cable ..... 311  
Repair Set, Trunk ..... 311  
Repair Set, Windshield Washer Pump ..... 275  
Reserve Check Valve/Filter Assembly ..... 245  
Reservoir, Clutch ..... 558  
Reservoir, Power Steering Fluid ..... 320, 322  
Reservoir, Rally Sport Vacuum Headlamp ..... 245  
Residual Pressure Valve ..... 371  
Resistor, Blower Motor ..... 423  
Resistor, Ignition Coil ..... 482  
Restoration Handbook ..... 160  
Retainer Clip, PCV ..... 445  
Retainer Clip, Speedometer Cable ..... 311  
Retainer Clip, Vacuum Advance ..... 478  
Retainer Clip, Wire Harness ..... 573  
Retainer Clips ..... 319  
Retainer Nut, Tail Lamp ..... 238  
Retainer, Air Fryer Valve ..... 567  
Retainer, Center Dash Panel ..... 73  
Retainer, Cigarette Lighter ..... 104  
Retainer, Column Lock Plate ..... 110  
Retainer, Coil Induction Valve ..... 455  
Retainer, Dash Panel Molding ..... 73  
Retainer, Dash Vent Bezel ..... 425  
Retainer, Door Lock Bellcrank ..... 293  
Retainer, Door Lock Cylinder ..... 291  
Retainer, Door Weatherstrip ..... 213  
Retainer, Front Air Deflector ..... 255  
Retainer, Front Bumper ..... 255  
Retainer, Grill Emboss ..... 180  
Retainer, Heater Control Cable ..... 426  
Retainer, Hood Insulation ..... 268  
Retainer, Horn Cap ..... 121  
Retainer, Inner Door Panel ..... 54  
Retainer, Lock Cylinder ..... 291  
Retainer, Park Brake Cable ..... 379-380  
Retainer, Pedal ..... 137  
Retainer, Power Steering Hose ..... 321, 323  
Retainer, Power Window Switch ..... 58  
Retainer, Radiator Overflow Hose ..... 402  
Retainer, Radiator Overflow Jar ..... 402  
Retainer, Rear Cargo Lamp ..... 308  
Retainer, Rear Speaker Enclosure ..... 99  
Retainer, Remote Mirror Bezel ..... 295  
Retainer, Shift Plate Bulb ..... 129  
Retainer, Shift Plate Slider ..... 129  
Retainer, Shoulder Belt ..... 42  
Retainer, Side Marker Lamp ..... 425  
Retainer, Space Saver Tire Inflator ..... 303  
Retainer, Starter Wire Harness ..... 491  
Retainer, Tail Lamp Lens ..... 239  
Retainer, TCS Switch Wire ..... 561  
Retainer, Trunk Lock ..... 306  
Retaining Pin, Brake Shoe ..... 377  
Retaining Ring, Headlamp ..... 230  
Retractor, Seat Belt ..... 42  
Return Spring Extension Rod ..... 559  
Return Spring, Clutch Fork ..... 559

# Product Index

Return, Throttle Spring .....	517	Screw, Park Lamp Lens .....	233	Seat Shelf Panel Bracket .....	298
Reverse Lamp Gasket .....	240	Screw, Radio Retainer .....	97	Seat Track Adjuster .....	38, 40
Reverse Lamp Housing .....	240	Screw, Rally Wheel Ornament .....	40	Seat Track Trim Cover .....	40
Reverse Lamp Lens .....	236, 239	Screw, Rear Spooler .....	99	Seat Upholstery .....	22, 32
Reverse Lamp Switch .....	103, 560	Screw, Roof Rail Weatherstrip .....	216	Seat/Shoulder Belt Guide Escutcheon .....	42
Reverse Lockout Assembly .....	560	Screw, Sun Visor Support .....	63	Seats, Bucket .....	33-36
Ring & Pinion Installation Set .....	357	Screw, Trim Panel .....	307	Secondary Spring and Housing .....	514
Ring & Pinion Shim Set .....	356	Screw, Upper Outlet Deflector .....	426	Security System .....	168-169, 581
Ring, Gauge Mount Angle .....	84	Screw, Wall Opening Molding .....	243	Sending Unit Terminal .....	405
Ring Shift Boot .....	230	Screw, Headlamp Bracket .....	242	Sending Unit Wire, Temperature .....	417
Rivet, Ball Joint .....	329	Screws, Park Lamp Lens .....	233	Sending Unit, Electronic Speedometer .....	92
Rivet, Rear Bumper .....	255	Screws, Receiver Dryer Mounting .....	431	Sending Unit, Fan Temperature .....	410
Rocker Arm Locks .....	468	Screws, Rocker Molding .....	224	Sending Unit, Fuel Tank .....	84, 92, 499
Rocker Arm Stud .....	468	Screws, Sheet Metal .....	43, 52	Sending Unit, Gear Indicator .....	82
Rocker Arm Stud Girdle .....	468	Screws, Windshield Molding .....	219	Sending Unit, Oil Pressure .....	474
Rocker Arms .....	468	Seal Puller .....	329	Sending Unit, Speedometer .....	81
Rocker Panel .....	281-282	Seal Set, Firewall Cowl Rubber .....	216	Sending Unit, Temperature .....	401
Rocker Panel Decal .....	205	Seal Set, Fresh Air Duct .....	424	Sensor, Coolant Level .....	401
Rocker Panel Emblem .....	194	Seal Set, Vent Ball .....	425	Sensor, Coolant Temperature .....	423
Rocker Panel Extension .....	257-258	Seal Set, AC Kit .....	430	Sensor, Fan Temperature .....	410
Rocker Panel Flap .....	282	Seal, AC Tube Foam .....	430	Sensor, Power Door Lock Position .....	293
Rocker Panel Molding .....	225	Seal, Air Cleaner Lid .....	457	Sensor, Throttle Position .....	511
Rocker Panel Molding Hardware .....	224-225	Seal, Bellcrank (Felt) .....	560	Serpentine Belt .....	413
Rocker Stud Tool .....	432	Seal, Core Support to Radiator .....	261	Serpentine Belt Pulleys .....	440
Rocker Switch .....	583	Seal, Cowl Induction Hood to Air Cleaner .....	455	Service Manual, Factory .....	158
Rod Clips .....	318	Seal, Cowl Induction Valve Frame .....	455	Service Tag Decal .....	202
Rod Accelerator .....	133	Seal, Head Lock Pillar .....	212	Shackle Bushings, Leaf Spring .....	321
Rod, Clutch Adjuster .....	559	Seal, Air Cleaner Lid .....	457	Shackle Set, Leaf Spring .....	351
Rod, Hood Opening Assist .....	267	Seal, Bellcrank (Felt) .....	560	Shaft Centering Sphere, Steering Column .....	110
Rods, Door Opening .....	293	Seal, Core Support to Radiator .....	261	Shaft, Oil Pump to Distributor .....	478
Roller Cage .....	348	Seal, Cowl Induction Hood to Air Cleaner .....	455	Shaft, Trunk Lock Handle .....	306
Roller, Quarter Bearing .....	559	Seal, Cowl Induction Valve Frame .....	455	Shafted Trunk Handle Set .....	578-579
Roller, Input Shaft Gear .....	560	Seal, Head Lock Pillar .....	212	Sheet Metal Tools .....	313
Roller, Quarter Window Lower Guide .....	221	Seal, Epoxy Putty .....	311	Shield, Brake Line .....	373
Roof Drip Molding .....	224	Seal, Evaporator Box .....	430	Shield, Door Panel Water .....	49
Roof Panel .....	283	Seal, Evaporator Core Housing .....	431	Shield, Fuel Line .....	506
Roof Panel Braces .....	283	Seal, Evaporator Core Pipe .....	431	Shield, Park Brake .....	379
Roof Panel Skin .....	283	Seal, Fender to Side Cowl .....	271	Shield, Rally Sport Actuator .....	245
Roof Rail Weatherstrip .....	212, 215	Seal, Head Lock Pillar .....	212	Shift Actuator Lever, Transmission .....	546
Roof Rail Weatherstrip Retainer Track .....	216	Seal, Lower Door Weatherstrip .....	213	Shift Arm, Transmission .....	552
Roof Rail Weatherstrip Screws .....	316	Seal, Radiator Support to Hood .....	400	Shift Boot .....	130, 562
Rotabroach Cutter Set .....	313	Seal, Shift Boot .....	130	Shift Boot Retainer .....	130
Rotor, Brake .....	358-367, 375	Seal, Shift Plate .....	129	Shift Boot Ring .....	130
Rubber Ignition .....	480	Seal, Spoiler/Fender .....	256	Shift Boot Tools .....	546-547
Rubber Bumper, Hood .....	268	Seal, Steering Column .....	109	Shift Cable Bracket .....	547
Rubber Bumper, Rally Sport Headlamp Door .....	243	Seal, Tail Lamp Lens .....	238	Shift Detent Lever .....	547
Rubber Bumper, Seat Back .....	40	Seal, Top Frame to Body .....	215	Shift Hole Reinforcement Ring .....	281
Rubber Electric Fan Spacer .....	409	Seal, Transfer Tube O-Ring .....	513	Shift Indicator Lens, Column .....	108-109
Rubber Stopper Kit .....	213	Seal, Windshield Wiper Motor to Firewall .....	275	Shift Kit .....	541
Rubber Stoppers, Convertible Top Frame .....	186	Seal, Wiper/Fender Headliner Core Tube .....	468	Shift Knob .....	549, 551, 562-563
Rubber Undercoating Paint .....	186	Sealant, Gasket .....	468	Shift Knob Adapter .....	563
Rust Prevention .....	180, 182-183	Sealant, Threadlocker .....	411	Shift Knob Snap Ring .....	549
		Sealant, Window .....	219	Shift Lamp Mounting Plate .....	127, 129
		Sealer, Fuel Tank .....	504	Shift Lens Backing Plate .....	129
		Seam Buser Chisel Tool .....	312	Shift Lever .....	546, 561-562
		Seam Tape .....	212	Shift Light .....	90
		Seat Adjuster Handle .....	40	Shift Plate .....	129-130, 562
		Seat Adjuster Knob .....	40	Shift Plate Bulb Retainer .....	129
		Seat Back Catch .....	40	Shift Plate Pattern .....	128-129
		Seat Back Hook .....	298	Shift Plate Slider Retainer .....	129
		Seat Back Panel, Bucket .....	38	Shift Plate Slider, Console .....	129
		Seat Back Retainers .....	38	Shift Tunnel .....	131, 281
		Seat Back Stopper .....	40	Shifter .....	549-553, 561-562
		Seat Belt .....	41-42	Shifter Base, Horseshoe .....	549
		Seat Belt Anchor Bolt .....	41	Shifter Boot and Ring .....	552
		Seat Belt Assembly .....	41	Shifter Button Return Spring, Console .....	124
		Seat Belt Bolt Cover .....	42	Shifter Cable, AT .....	546
		Seat Belt Bolts .....	41	Shifter Conversion .....	547
		Seat Belt Buckle .....	41	Shifter Cover .....	553
		Seat Belt Buckle Cover .....	42	Shifter Linkage Set .....	560
		Seat Belt Escutcheon .....	42	Shifter Mount Bracket .....	560
		Seat Belt Guide .....	42	Shifter Rebuild Set .....	561
		Seat Belt Instruction Card .....	201	Shifter Rod, Floor .....	546
		Seat Belt Bracket .....	42	Shifter Stabilizer Rod .....	561
		Seat Belt Sleeves .....	42	Shim Set, Ring & Pinion .....	356
		Seat Belt Style Belts .....	150	Shim, Body Alignment .....	271, 326
		Seat Belt Sun Visor Sleeve .....	204	Shims, Distributor Housing .....	378
		Seat Belt Trim .....	42	Shims, Starter .....	491
		Seat Brackets .....	36	Shock Absorber .....	339, 344-347
		Seat Burlap .....	37	Shock Absorber Cap .....	345
		Seat Emblem .....	39	Shock Absorber Cap .....	345
		Seat Floor Braces .....	280		
		Seat Foam .....	20-21, 37		
		Seat Frame, Bucket .....	38		
		Seat Frame, Rear .....	38		
		Seat Headrest .....	39		
		Seat Headrest Vinyl Cover .....	39		
		Seat Heater Kit .....	39		
		Seat Release Cable .....	40		
		Seat Shelf .....	69		

## Product Index

Shock Decal .....	203	Spare Wheel Lock Instruction Decal .....	200	Steering Arm .....	328
Shock Extenders, Leaf Spring Conversion .....	343	Spark Guard .....	486	Steering Box Decal .....	324
Shock Hardware .....	345	Spark Plug .....	488	Steering Box Mounting Bolt .....	324
Shock Mount, Upper Front .....	345	Spark Plug Protector Sleeves .....	488	Steering Column Bracket .....	108-109
Shock Plate, Rear Leaf Spring .....	350	Spark Plug Gap Tool .....	488	Steering Column Bracket .....	110
Shock Tower Brace, Rear .....	352	Spark Plug Thread Chaser .....	488	Steering Column Clamp Plate .....	110
Shock Tower Panel, Rear .....	305	Spark Plug Wire Heat Shield .....	488-489	Steering Column Cover, Lower Dash .....	73
Shoe, Park Brake .....	379	Spark Plug Wire Puller .....	488	Steering Column Floor Mount .....	109
Shop Manual .....	13	Spark Plug Wire Separators .....	488-489	Steering Column Hardware .....	108
Shoulder Belt Harness Retainer .....	43	Spark Plug Wire .....	485-487	Steering Column Lever .....	110
Shroud, Air Cleaner .....	457	Speaker Shelf Extension, Rear Seat .....	298	Steering Column Lock Shoe Return Spring .....	110
Shroud, Fan .....	402-403	Speaker Shelf Panel, Rear Seat .....	298	Steering Column Seal .....	109
Shroud, Steering Wheel .....	420	Speaker Wiring Harness .....	576	Steering Column Shift Centering Sphere .....	110
Side Air Vent Shut-Off Elbow Assembly .....	124	Speakers .....	98-99	Steering Column Slip Shaft .....	109
Side Bracket Cover, Bucket Seat .....	38	Speed Nut, Emblem .....	193	Steering Column Strap Clamp .....	109
Side Marker Custom Medalion .....	234	Speed Warning Cable Bracket .....	77	Steering Column Support Rod .....	110
Side Marker Lamp .....	232-235	Speed Warning Control Cable .....	77	Steering Column to Floor Rubber Boot .....	110
Side Marker Lamp Bezel .....	235	Speed Warning Wiring Harness .....	576	Steering Column Wedge .....	110
Side Marker Lamp Gasket .....	235	Speedometer .....	76	Steering Column/Dimmer Switch Pigtail .....	109
Side Marker Lamp Mounting Template .....	234	Speedometer Cable .....	77	Steering Coupler Hardware .....	324
Side Marker Lamp Nut .....	235	Speedometer Cable Converter .....	77	Steering Coupler Nut Set .....	324
Side Marker Lamp Retainer .....	235	Speedometer Cable Firewall Grommet .....	77	Steering Coupling Joint Repair Set .....	324
Side Marker Lamp Socket .....	235	Speedometer Cable Retainer Clip .....	77	Steering Frame Brace .....	336
Side Marker Lens .....	235	Speedometer Drive Gear Clip .....	77	Steering Gear to Pitman Shaft Lock Washer .....	324
Side Moldings .....	225	Speedometer Driven Gear .....	77	Steering Gearbox, Manual .....	324
Side Panel, Interior Rear .....	46	Speedometer Gear Housing .....	77	Steering Knuckle Spindle Washer .....	329
Side Panel, Trunk Cover .....	305	Speedometer Nut Set .....	74	Steering Nut Set .....	329
Side to Top Post Adapter Set .....	567	Speedometer Sender .....	84	Steering Shafts .....	341
Side Window Corner Filler Weatherstrip .....	213	Speedometer Sending Unit .....	81, 92	Steering Shaft Bearing Set .....	110
Side/Floor Storage Lock Set .....	291	Spindle Nut & Cotter Pin Kit .....	329	Steering Shaft U-Joint .....	324
Silencer, Door Lock Rod .....	293	Spindle, Disc Brake .....	328	Steering Shaft, Intermediate .....	324
Silicone Engine Coolant Plumbing Set .....	405	Spindle, Drum Brake .....	328	Steering System, Rack and Pinion .....	325
Silicone Gasket Maker .....	415	Splash Guard, Fender Skirt .....	271	Steering System, Trunk Return .....	39
Sill Plate .....	9	Splash Drums .....	240	Steering Wheel .....	112-119
Sill Plate Screw, Door .....	9	Splash Guard .....	256, 258	Steering Wheel Adapter .....	108, 113
Sill Plate Wire Harness Guard .....	9	Spoiler Emblem .....	195	Steering Wheel Center Cap .....	114
SiriusXM Radio Tuner .....	97	Spoiler Mounting Hardware .....	300	Steering Wheel Cover .....	115
Skip Shift Eliminator .....	540	Spoiler, Front .....	256	Steering Wheel Emblem .....	120
Sleeve, Armrest .....	55	Spoiler, Rear Window .....	258	Steering Wheel Horn Button .....	120
Sleeve, Jack Wrench .....	103	Spoiler, Trunk .....	300-301	Steering Wheel Mounting Hub .....	121
Slip Shaft, Steering Column .....	309	Spoiler/Fender Welting Seal .....	256	Steering Wheel Mounting Set .....	121
Smog Check Valve .....	525	Spot Weld Chisel Tool .....	312	Steering Wheel Puller Tool .....	112
Smog Divertor Elbow .....	525	Spot Weld Cutter Tool .....	312	Steering Wheel Quick Release .....	110
Smog Pump .....	525	Spray Adhesive .....	12, 69	Steering Wheel Stroud .....	120
Smog Pump Belt, Reproduction .....	525	Spray Gun, Paint .....	187	Steering Wheel Spacer .....	113
Smog Pump Bracket .....	525	Spray-On Acoustics Insulation .....	12	Stencil Set, Stripe .....	206-208
Smog Pump Hose Tower Clamp .....	525	Spread Bre Sealting Plate .....	512	Stencil, Fuel Tank .....	497
Smog Pump Pulley .....	525	Spring Shackles, Rear .....	351	Stencil, Muffler .....	497
Smog Tubes .....	525	Spring, Accelerator Pedal Tension .....	133	Stencil, Valve Cover .....	450
Smog/Air Block Off Plug .....	524	Spring, Brake Pad Retainer .....	378	Stereo Operating Instructions .....	202
Snap Ring, Shift Knob .....	549	Spring, Clutch Fork Repair .....	558	Stone Shield, Inner Fender .....	271
Socket Assist .....	523	Spring, Console Ashtray Lid .....	125	Stop Lamp Bracket .....	137
Socket, Ashtray Lamp .....	105	Spring, Console Lid .....	124	Stopper Kit, Rubber .....	113
Socket, License Lamp .....	240	Spring, Console Shifter Button Return .....	124	Stopper, Ashtray Cover .....	105
Socket, Oil Pressure Switch .....	475	Spring, Door Push Button Lock Knob .....	292	Stopper, Fold Down Seat Back .....	40
Socket, Quarter Dome Lamp .....	61	Spring, Frigate Return .....	57	Stopping Glove Box Door, Dash Mount .....	268
Socket, Side Marker Lamp .....	235	Spring, Headlamp Beam Adjusting .....	229	Stopper, Hood .....	268
Socket, Tail Lamp .....	239	Spring, Hood Hinge .....	266	Stopper, License Plate .....	260
Solar Wind Rear Window Spoiler .....	258	Spring, Hood Pop-Up .....	267	Stopper, Lower Window Bumper .....	220
Solenoid, Cowl Induction .....	455	Spring, Park Brake .....	380	Storage Bag, Convertible Top Boot .....	285
Solenoid, Headlamp Washer Drip Valve .....	229	Spring, Rear Drum Brake .....	377	Storage Bag, Jack .....	303
Solenoid, Lift Gate, Trunk Lock .....	307	Spring, Thrustle Return .....	511	Storage Box Insert .....	106
Solenoid, Starter .....	499	Spring, Window Crank Handle .....	57	Storage Sleeve, Jack Wrench .....	303
Solenoid, TCS .....	543, 561	Springs, Bucket Seat Support .....	37	Storage Sleeve, T-Top .....	215
Solenoid, Throttle .....	511	Springs, Coil .....	342-344	Strap, Brake Hose .....	373
Sound Deadener .....	11-12	Springs, Valve .....	468	Strap, Fender Wiring Harness .....	269, 583
Space Saver Spare Inflator Decal .....	201	Squirters, Accelerator Pump .....	511	Strap, Glove Box Support .....	106
Space Saver Spare Trunk Lock .....	204	Stabilizer, Shifter .....	561	Strap, Glove Box Core .....	293
Space Saver Tire Inflator Retainer .....	307	Stabilizer, Door Window Guide .....	201	Striker, Door Lock .....	42
Spacer Bar, Brake Shoe .....	373	Stainless Radiator Hose .....	425	Striker, Door Lock .....	107
Spacer, Air Cleaner .....	459	Stainless Steel Brake Hose .....	363, 372	Striker, Hood Latch .....	267
Spacer, Alternator .....	495	Stamp, Inspection .....	170	Striker, Liftgate .....	206, 306
Spacer, Ball Joint .....	327	Stamps, Hose .....	697	Strips, Decal Set .....	206-208
Spacer, Bump Stop .....	350, 384	Starter, Thrustle Return .....	490-491	Strips, Stencil Set .....	206-208
Spacer, Electric Fan (Rubber) .....	409	Starter Amperage Booster .....	491	Strips, Headliner Retainer .....	68
Spacer, Front Coil Spring .....	409	Starter Heat Shield .....	491	Strut Tower Brace .....	336
Spacer, Steering Wheel .....	113	Starter Motor Brace .....	491	Strut, Coulover .....	347
Spacer, Valve Cover .....	447	Starter Motor Brushes .....	491	Strut, Lift Gate Door Window .....	37
Spacer, Vent Glass Handle .....	58	Starter Mounting Bolts .....	491	Stud Assembly, Door to Glass Dash Mount .....	221
Spanner Wrench .....	343-344	Starter Relay .....	491	Stud Assembly, Door Window Glass Mount .....	221
Spare Tire Clamp Anchor Plate .....	302	Starter Shims .....	491	Stud Girdle, Rocker Arm .....	468
Spare Tire Cover .....	303	Starter Solenoid .....	491	Stud, AC Compressor Mounting .....	430
Spare Tire Nut .....	303	Starter Wire Harness Retainer .....	491	Stud, Alternator .....	494
Spare Wheel Decal .....	200	Steel Garage Art .....	151, 154-155	Stud, Carburetor to Air Cleaner .....	455, 457, 514



# Product Index

Stud, Clutch Fork Pivot .....	558	T-Top Locks .....	215	Throttle Valve Cable Bracket .....	547
Stud, Distributor .....	478	T-Top Moldings, Interior .....	214	Thrust Bearings .....	343
Stud, Door Glass Sash Mount .....	220	T-Top Retaining Clip .....	214	Tie Rod .....	326
Stud, Fan Clutch to Water Pump .....	407	T-Top Roof Panel .....	214	Tie Rod Adjusting Sleeve .....	326-327
Stud, Heat Stove Mounting .....	523	T-Top Storage Sleeve .....	215	Tie Rod End .....	326
Stud, Rear End Main Cap .....	356	T-Top Weatherstrip .....	214	Tie Rod End Dust Boot .....	326-327
Stud, Rocker Arm .....	468	T-Top Weatherstrip Clip .....	215	Tie Rod Sleeve Bolts .....	327
Stud, Transmission Lever .....	546	Tab, Timing .....	443	Tie Strap, Windshield Washer Hose .....	274
Stud, Vent Window Handle Mount .....	58	Tachometer .....	78-79, 84-85, 91	Tie Strap, Wing Harness .....	583
Stud, Wheel? .....	377	Tachometer Adapter .....	92-97	Till Column Universal Joint .....	108
Subframe Assembly .....	338	Tachometer Noise Filter .....	85-92	Tilt Steering Column .....	329
Subframe Body Mount Bushings .....	336, 340	Tachometer Wiring Harness .....	576	Tilt Steering Column Bracket .....	105
Subframe Body Mounting Plates .....	336	Tack Strip, Convertible Top .....	285, 287	Tilt Steering Column Rag Joint .....	110
Subframe Connectors .....	334-335, 340	Tag, Power Disc Brake .....	203	Tilt Steering Rack Set .....	108
Subframe Mount Hole Repair Set .....	336	Tag, Radiator .....	401	Tilt Wheel Release Lever .....	111
Subframe Mounting Hardware Set .....	336	Tag, Rear Axle Lubrication ID .....	356	Timing Chain .....	443
Subframe Mounting Nut & Cage .....	336	<b>Tail Lamp</b> .....	239	<b>Timing Cover</b> .....	444
Subframe, Front .....	338	Tail Lamp Applique .....	239	Timing Cover Bolts .....	443
Subwoofer .....	98	Tail Lamp Bezel .....	238	Timing Cover Gasket .....	469
Sun Shade .....	168	Tail Lamp Bezel Mounting Hardware .....	238	Timing Gear .....	443
Sun Visor Delete Plate .....	63	Tail Lamp Cover .....	241	Timing Light .....	433, 480
Sun Visor Support .....	63	<b>Tail Lamp Filter Panel</b> .....	239	Timing Tab .....	443
Sun Visor Support Screws .....	63	Tail Lamp Housing .....	237	Tip & Bushing Set, Sun Visor .....	63
Sun Visor Tip & Bushing Set .....	63	Tail Lamp Housing Mounting Hardware .....	238	<b>Tip, Exhaust</b> .....	535
Sun Visors .....	64-66	Tail Lamp Lens .....	236-237	Tire & Wheel Cleaner .....	175, 394
Super Air Lift Instruction Card .....	203	Tail Lamp Mounting Gasket .....	238	Tire Pressure Decoder .....	200
Super Sport Sales Brochure .....	160	Tail Lamp Pin Retainer .....	239	Tire Storage System .....	396-397
Support Block, Dash Pad .....	71	<b>Tail Lamp Pin Retainer</b> .....	239	<b>Tires</b> .....	396-397
Support Bracket, Fuel Line .....	505	Tail Lamp Rear Panel Insulation .....	239	Toe Board, Front .....	279
Support Bracket, Radio .....	96	Tail Lamp Socket .....	239	Toggle Switch .....	583
<b>Support Bracket, Shift Cable</b> .....	546	Tail Lamp Wiring Clip .....	238	Tonneau Cover, Convertible .....	258
Support, Accelerator Pedal Rod .....	133	Tail Panel/Brace .....	305	Tool Set, Valve Lash Wrench .....	432
Support, Convertible, Crossbrace .....	335	Tail Panel/Bumper Cover .....	308	Tool, AC Horn Bulb/Crimp Crimper .....	329
Support, Drip Rail .....	283	Tail Panel/Rear Bumper Cover, Fiberglass .....	308	Tool, Angle Finder .....	356
Support, Front Headlamp .....	230	Tailpipe .....	527	Tool, Antenna Nut .....	93
Support, Front Seat Frame Floor .....	280	Tailpipe Cutter Tool .....	527	Tool, Battery Carrying Strap .....	568
Support, Hood Hatch .....	268	Tailpipe Expander Tool .....	527	<b>Tool, Battery Charger</b> .....	569
Support, Interior Rear View Mirror .....	63	Tank to Filler Neck Hose .....	498	Tool, Battery Load Tester .....	568
Support, Radiator .....	61	Tank, Fuel .....	496-497	Tool, Battery Nut Pliers .....	569
Support, Sun Visor .....	63	<b>Tank, Radiator Overflow</b> .....	402	Tool, Battery Post Cleaning .....	569
Support, Transmission .....	539	Tape, Wire Harness .....	582	Tool, Battery Relay Tester .....	568
Surge Protector .....	581	<b>TCS Switch Wire Retainer</b> .....	561	Tool, Battery Terminal Puller .....	569
Suspension & Chassis Manual .....	334, 339-340	TCS Switch Wiring Harness .....	577	Tool, Battery Terminal Spreader .....	569
Suspension & Chassis Manual .....	167	Temperature Gauge, Vacuum .....	79	Tool, Best Rent Removal .....	312
<b>Suspension Bushing Set</b> .....	346, 340	Temperature Gauge .....	79	<b>Tool, Brake Adjustment</b> .....	381
<b>Sway Bar</b> .....	332, 339	<b>Temperature Sending Unit</b> .....	90, 401	Tool, Brake Bleeder .....	381
Sway Bar Bushing Set .....	333	Temperature Sending Unit Wire .....	401	Tool, Brake Cylinders .....	382
Sway Bar End Links .....	332-333	Temperature Sensor, Fan .....	410	Tool, Brake Cylinder Hone .....	381
Sway Bar Mount Brace .....	352	Template, Back-Up Lamp .....	240	Tool, Brake Pad Spreader .....	381
Switch, Back-Up Lamp .....	560	Template, Emblem .....	193	Tool, Brake Proportioning Valve Bleed .....	382
Switch, Battery Cutout .....	569	Template, Rally Sport Molding Mount .....	224	<b>Tool, Brake Spring Pliers</b> .....	381
Switch, Blower/Heater Fan .....	423	Template, Side Marker Lamp Mounting .....	234	Tool, Brake System Bleeder .....	381
Switch, Brake Lamp .....	137	Tensioner, Serpentine Belt .....	413	Tool, Brake Tubing Bender .....	382
Switch, Convertible Top .....	102	Terminal, Sending Unit .....	475	Tool, Bushing Installation/Removal .....	329
Switch, Cow Induction Solenoid .....	455	Thermal Insulation, Wiring .....	582	Tool, Cam Bearing Installation .....	432
Switch, Defogger .....	101	Thermometer, Radiator Cap .....	402	Tool, Camshaft Installation Handle .....	432
Switch, Door Jamb .....	409-410	Thermometer, Infrared .....	433	Tool, Carburetor Float Adjustment .....	513
Switch, Fuel Pump Safety .....	502	Thermostat .....	419	<b>Tool, Clutch</b> .....	557
Switch, Headlamp .....	100	Thermostat Gasket .....	419	Tool, Compression Tester .....	433
Switch, Ignition .....	102	<b>Thermostat Housing</b> .....	418	Tool, Crankshaft Turning Socket .....	432
Switch, Manual Transmission .....	583	Thermostat Housing Bolt Set .....	419	Tool, Crimp .....	486
<b>Switch, Neutral Safety/Back-Up Lamp</b> .....	103, 560	Thermostat, Electric Fan .....	411	Tool, Decal Removal .....	432
Switch, Park Brake Lamp .....	380	Thermostatic Choke Coil .....	514	Tool, Detailing Scraper .....	432
Switch, Power Seat .....	40	<b>Third Brake Lamp</b> .....	241	Tool, Dial Indicator .....	432
<b>Switch, Power Window/Door Lock</b> .....	58	Thread Identifier .....	432	Tool, Distributor Clamp Wrench .....	479
Switch, Radiator Cooling Fan .....	423	Threadlocker Sealant .....	311	<b>Tool, Door Panel/Trim Removal</b> .....	56
Switch, Rear Transmission .....	583	Throttle Arm, Cow Induction .....	455	Tool, Double Flaring .....	382
Switch, Toggle .....	583	Throttle Body .....	515	Tool, Electrical Connector Separator .....	583
Switch, Trunk Lamp .....	307	<b>Throttle Body</b> .....	515	Tool, Engine Rotation Adapter .....	432
<b>Switch, Trunk Signal Connector</b> .....	111	Throttle Body Coolant Bypass Set .....	415	Tool, Flywheel Turner .....	432
Switch, Windshield Wiper .....	101	Throttle Body Plate .....	515	Tool, Fuel Pressure Gauge .....	433, 500, 505
Swivel and Rod Assembly .....	546	Throttle Bracket Set .....	548	Tool, Fuel Tank Sender Lock Ring .....	499
Synthetic Gear Oil .....	357	Throttle Cable .....	516	Tool, Glass Seal Rope-In .....	218
		<b>Throttle Cable Bracket</b> .....	514, 517	Tool, Harmonic Balancer .....	442
		Throttle Cable Spring .....	516	Tool, Headlamp Nut .....	100-101
		<b>Throttle Kick Down Cable Bracket</b> .....	517	Tool, Headliner Installation .....	613
		Throttle Lever Arm Pinch Bolt .....	133, 517	Tool, Holcutter .....	33
		Throttle Lever Arm Sensor .....	518	<b>Tool, Hose Clamp Pliers</b> .....	404
		Throttle Return Spring .....	518	Tool, Ignition Switch Bezel Nut .....	102
		Throttle Solenoid .....	511	Tool, Ignition Tester .....	432
		Throttle Solenoid Retaining Clip .....	455	Tool, Interior Door Handle Removal .....	56
		Throttle Spring Return Set .....	517	Tool, IR Thermometer .....	433
		Throttle Stud, Carburetor .....	517	Tool, Molding .....	438
				Tool, Multi-Meter .....	213

<b>T</b>	
T-56 All-In-One Harness .....	577
T-56 Transmission Installation Kit .....	577
T-Clip, Wiring Harness .....	583
T-Shirt & Apparel .....	140-147
T-Top Center Rail .....	283
T-Top Grommet .....	214
T-Top Handles .....	215



# Product Index

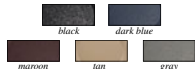
Vent Duct Connector.....	424	Wheel Bearing Grease.....	329	Wire, Accessory.....	582
Vent Glass Frame Hardware.....	218	Wheel Bearing Grease Cap, Front.....	329	Wire, Temperature Sending Unit.....	401
Vent Glass Handle Spacer.....	58	Wheel Bearing/Seal Kit.....	394	Wires, Spark Plug.....	485-487
Vent Glass Rubber Channel.....	218	Wheel Center Cap.....	383-392, 394	Wiring Adapter, Key Column.....	109
Vent Outlet, Dash.....	425	Wheel Center Cap Retainer.....	384	Wiring Diagram.....	159
Vent Pull Knob.....	425	Wheel Coating, Factory.....	390	Wiring Harness Clamp.....	269, 583
Vent Tube Mounting, Crankcase.....	457	Wheel Cylinder, Drum Brake.....	376	Wiring Harness Clips.....	318
Vent Tube, Crankcase.....	457	Wheel Hardware Set.....	394	Wiring Harness Conversion.....	570
Vent Valve, Fuel Tank.....	484	Wheel Lug Wrench.....	383, 395	Wiring Harness, Figtail, Alternator.....	494
Vent Window Frame.....	218	Wheel Opening Molding.....	225	Wiring Harness Figtail, Back-Up Lamp Socket.....	240
Vent Window Frame Weatherstrip.....	212	Wheel Opening Molding Screw.....	225	Wiring Harness Figtail, Horn Relay.....	121
Vent Window Glass.....	217-218	Wheel Ornament Decal.....	384	Wiring Harness Strap.....	583
Vent Window Handle.....	58	Wheel Spacers.....	384	Wiring Harness T-Clip.....	583
Vent Window Handle Mount Stud.....	58	Wheel Spinners.....	391	Wiring Harness Tie Strap.....	583
Vent Window Handle Washer.....	58	Wheel Stud.....	377	Wiring Harness Tubing/Retainer, Heatshrink.....	582
Vent, AC Air Distributor Duct.....	425	Wheel Trim Ring.....	383	Wiring Harness, Air Conditioning.....	429
Vent, Hood Cowl.....	272	Wheelhouse Panel, Outer.....	297	Wiring Harness, Ashtray Lamp.....	105
Vinyl Top.....	283	Windage Tray, Oil Pan.....	471	Wiring Harness, Audio.....	576
Vinyl Top Cleaner.....	174	Windlace Retainers.....	52	Wiring Harness, Back-Up Lamp.....	576
Vinyl Top Molding.....	224	Windlace, Door Jamb.....	52	Wiring Harness, Clock.....	131
Vinyl Top Molding Hardware.....	224	Window Bumper Stop.....	220	Wiring Harness, Console Gauge Conversion.....	109
VIR Eliminator Assembly.....	431	Window Channel Liner.....	219	Wiring Harness, Convertible Power Top.....	286
Volt Gauge.....	79	Window Crank Handle Spring.....	57	Wiring Harness, Courtesy Lamp.....	107
Voltage Regulator.....	494	Window Crank Handle, Door.....	57-58	Wiring Harness, Cowl Induction.....	455
Voltage Regulator Bolts.....	317	Window Decal.....	202	Wiring Harness, Cruise Control.....	577
Voltage Regulator Ground Wire.....	494	Window Felt.....	213	Wiring Harness, Custom Gauge Dash.....	81
Voltage Regulator.....	317	Window Figtail Molding.....	316	Wiring Harness, Dome Lamp.....	582
Voltage Regulator Pigtail.....	494	Window Glass Holder.....	218	Wiring Harness, Electric Fan.....	410-411
<b>W</b>		Window Guide Roller Nut Tool.....	221	Wiring Harness, Engine.....	570, 574
Wall Clock.....	152	Window Handle Clip.....	318	Wiring Harness, Fog Lamp.....	234
Wall Sign, Neon.....	152	Window Handle Washer Plates.....	57	Wiring Harness, Front Lamp.....	574
Warning Module, Low Fuel.....	79	Window Plate & Roller, Door.....	220	Wiring Harness, Fuel Sender.....	499
Warranty Certificate.....	202	Window Sealant.....	219	Wiring Harness, Glove Box Lamp.....	228
Wash Stick.....	177	Window Sticker, New Car.....	204	Wiring Harness, Headlamp.....	228
Washer Bottle/Hose Kit.....	274	Window Stop, Door.....	220	Wiring Harness, Heater.....	479
Washer Hose Spray Connector Tee.....	274	Window Trim Molding.....	224	Wiring Harness, HEI.....	576
Washer Pump/Washer Harness, RS Headlamp.....	274	Windshield Decal.....	205	Wiring Harness, Instrument Cluster.....	576
Washer, Distributor.....	478	Windshield Glass.....	217	Wiring Harness, Neutral Safety Switch.....	570
Washer, Door Glass.....	221	Windshield Glass Support.....	219	Wiring Harness, Power Window.....	576
Washer, Door Striker Bolt.....	293	Windshield Molding.....	222	Wiring Harness, Rear Body Lamp.....	575
Washer, Harmonic Balancer.....	442	Windshield Molding Screws.....	219	Wiring Harness, Rear Window Defogger.....	576
Washer, Heater Box Frame.....	424	Windshield Removal Tool.....	218	Wiring Harness, Speaker.....	575
Washer, Intake Manifold.....	663	Windshield Seal Strip.....	205	Wiring Harness, Speed Warning.....	576
Washer, Steering Gear to Pitman Shaft Lock.....	324	Windshield Washer Fluid Jar Screen.....	274	Wiring Harness, T-56.....	577
Washer, Steering Knuckle Spindle.....	329	Windshield Washer Hose.....	274	Wiring Harness, Tachometer.....	576
Washer, Vent Window Handle.....	58	Windshield Washer Hose Tie Strap.....	274	Wiring Harness, TCS Switch.....	577
Water Neck Mounting Bolts.....	419	Windshield Washer Jar.....	274	Wiring Harness, Transistor Ignition.....	577
Water Neck O-Ring.....	419	Windshield Washer Jar Bracket.....	274	Wiring Harness, Turn Signal.....	581
Water Outlet.....	418	Windshield Washer Jar Cap.....	274	Wiring Harness, Under Lamp.....	575
Water Outlet Bolt.....	419	Windshield Washer Nozzle.....	274	Wiring Insulation, Temperature Sending.....	410
Water Outlet Restrictors.....	419	Windshield Washer Pump.....	275	Wiring Manual.....	166
Water Pump.....	414-416	Windshield Wiper Arm.....	273	Wiring Retainer, Plastic.....	583
Water Pump Belt.....	412-413	Windshield Wiper Arm Remover Tool.....	274	Wiring, Fuse Panel.....	571
Water Pump Bolts.....	416-417	Windshield Wiper Blade.....	273	Wiring, High-Amp Alternator.....	581
Water Pump Bypass Hose.....	415	Windshield Wiper Motor.....	275	Wonder Bar.....	336
Water Pump Hose Nipple.....	416	Windshield Wiper Motor Arm.....	275	Wood Wheel Hub.....	121
Water Pump Hose Outlet Fitting.....	416	Windshield Wiper Motor to Firewall Seal.....	275	Wood Wheel Pin, Spring & Retainer.....	121
Water Pump Pulley.....	416-417	Windshield Wiper Switch.....	101	Wrench, Brake Bleeder.....	381
Water Pump Spacers.....	415	Windshield Wiper Switch Knob.....	101	Wrench, Distributor Clamp.....	479
Water Pump/Washer Transmission.....	415	Windshield Wiper Transmission.....	101	Wrench, Oil Filler.....	475
Water Shield, Quarter Panel.....	49	Wing Nut, Air Cleaner.....	457	Wrench, Oxygen Sensor.....	523
Wax/Polish.....	171-172	Wing, Rear Window.....	258	<b>X</b>	
Weatherstrip Clips.....	215-216, 318-319	Wiper Module.....	101	X-Brace, Radiator Opening.....	261
Weatherstrip Door Retainer.....	213	Wiper Motor.....	275	X-Pipe Crossover.....	526
Weatherstrip Door Seal.....	212	Wiper Motor Ground Strap.....	275	X-Pipe, Exhaust.....	526
Weatherstrip Lubricant.....	216	Wiper/Headlamp Nut Tool.....	100-101	<b>Y</b>	
Weatherstrip, Convertible.....	215	Wire Connector Terminals.....	573, 583	Y-Block, Fuel Line.....	505
Weatherstrip, Door Frame.....	212	Wire Crimping Tool.....	583	Y-Pipe, Exhaust Manifold.....	526
Weatherstrip, Hood to Cowl.....	269	Wire Grommet.....	573	Yenko Fan Shroud Decal.....	198
Weatherstrip, Quarter Window Vertical.....	216	Wire Gutter.....	269, 573	Yenko Headrest Decal.....	39
Weatherstrip, Rear Rail.....	212	Wire Harness Guard.....	573	Yenko License Plate.....	381
Weatherstrip, Side Window Corner Filler.....	213	Wire Harness Retainer Clip.....	491	Yenko Rally Wheel Cap.....	147
Weatherstrip, T-Top.....	214	Wire Harness Retainer, Starter.....	491	<b>Z</b>	
Weatherstrip, Trunk.....	216	Wire Harness Tape.....	582	Zerk Fittings.....	327
Weatherstrip, Window Vent Frame.....	212	Wire Harness, Distributor.....	479	Zinc Anode, Cooling System.....	410
Wedge, Steering Column.....	110	Wire Loom Set.....	582		
Welding Epoxy.....	407	Wire Loom, Spark Plug.....	488		
Welding Manual.....	167	Wire Looms, Valve Cover.....	447		
Well Liner, Convertible.....	286	Wire Retainer, Heater Box.....	422		
Well Panel, Rear Convertible Side.....	47	Wire Separators, Spark Plug.....	488-489		
Well, Trunk Floor.....	304	Wire Sleeves.....	582		
Wheel.....	385-395	Wire Straps.....	573		

# New Product Showcase

**New!**



GN11020801



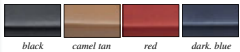
## 1982-92 Bucket Seat Hinge Covers

Reproduction bucket seat hinge covers for various 1982-92 Camaro models. Manufactured to factory specifications featuring the correct grain for a proper appearance. Available in factory colored material.

GN11020801	1982-92	blk - unpainted	91.99 set
GN11020912	1982-92	dark blue	134.99 set
GN11020915	1982-92	maroon	134.99 set
GN11020935	1982-92	tan	134.99 set
GN11020956	1982-92	gray	134.99 set



153033



## 1978-81 T-Top Latch Moldings

Reproduction of the original T-top latch moldings designed for use with 1978-81 Camaro models. Moldings are manufactured in quality injection molded ABS replicating the original in appearance and fitment. Features correct grain finish and pre-cut latch opening. Will replace the old or cracked originals. Sold in pairs.

153033	1978-81	black	129.99 pr
153031	1978-81	camel tan	129.99 pr
153032	1978-81	red	129.99 pr
153001	1978-81	dark blue	129.99 pr

**New!**



## 1984-92 T-Top Latch Moldings

T-top latch moldings for 1984-92 Camaro models. Each molding is manufactured in injection molded material to factory GM specifications featuring the correct finish and pre-cut latch opening. These moldings surround the area where the T-top latch is located. Includes correct mounting holes for installation. Sold in pairs.

20480374	1984-92	black	129.99 pr
----------	---------	-------	-----------

**New!**

**OER AUTHORIZED**



## 1978-81 T-Top Center Rail

Reproduction of the T-top center rail for 1978-81 Camaro models with T-tops. This center rail replaces the commonly rusted area where the 2 T-top glassess meet. Manufactured from stainless steel to factory specifications for proper fitment and appearance.

153794	1978-81	209.99 ea
--------	---------	-----------

**OER AUTHORIZED**



5696084

8270032A

## 1967-69 Manual Steering Gearbox

OER® Authorized reproduction manual steering gearboxes for various 1967-79 Camaro models. Each all new gearbox is manufactured with brand new tooling to factory specifications.

5696084	1967-69	24:1, 6-1/4 turns	229.99 ea
8270032A	1967-79	24:1, 6 turns	229.99 ea
8270032B	1967-79	16:1, 4 turns	229.99 ea

**New!**



300116

## 1967-81 Coilover Set Front and Rear

Convert your front and rear 1967-81 Camaro suspension to full ride height adjustable coilovers. Aldan Phantom Series single adjustable coilovers deliver superior handling and ride quality for a drastic improvement over stock suspension. Aldan's hybrid front coil springs are designed as a direct fit into the factory upper spring pockets. Aldan rear kits use factory rear end and shock mounts for precise fitting. Lowers 0.0"-2.0" front and 0.0-3.0" in the rear. Made in USA.

300114	1967-69	SB mono-Leaf	1059.99 set
300115	1967-69	BB mono-Leaf	1059.99 set
300116	1967-69	SB multi-Leaf	1059.99 set
300117	1967-69	BB multi-Leaf	1059.99 set
300108	1970-81	small block	1049.99 set
300109	1970-81	big block	1049.99 set

**New!**



Race

Retro



Gotham

Competition



Millennium

Nero

## 1967-02 Street Series Steering Wheels

MOMO street steering wheels combine 50 years of racing experience with cutting edge ergonomic design. MOMO Street wheels feature industry standard 6 bolt hubs, black top grain leather grips, and aircraft aluminum construction. They come in a variety of designs and finishes to compliment any interior. All models include a matching horn button with the MOMO logo.

Part#	Model	Diameter	Spokes	Price
M36009	Race	320mm	gray	248.99 ea
M36008	Race	350mm	gray	248.99 ea
M36014	Retro	360mm	silver	258.99 ea
M36010	Comp	360mm	black	244.99 ea
M36013	Gotham	350mm	black	258.99 ea
M36027	Millennium	350mm	silver	308.99 ea
M36012	Nero	350mm	black	278.99 ea

### Hub Adapter

M2401	1969-02	all	94.99 set
-------	---------	-----	-----------



## 1967-02 Steering Wheel Adapter

This set contains a steering wheel adapter and hardware for installing a MOMO 6 bolt hub steering wheel on a 1969-02 Camaro with a stock steering column. MOMO adapters are designed to collapse in case of an accident reducing the risk of injury to the driver.

M2401	1969-02	94.99 set
-------	---------	-----------



WARNING: Cancer and Reproductive Harm - www.P65Warnings.ca.gov

CHANGE SERVICE REQUESTED

CALL TOLL-FREE OR ORDER ONLINE TODAY **1-800-854-1280** / **classicindustries.com**

New!



MS27552P



MS27552MB



MS27552CA



### 1970-73 Billet Rally Sport Grill Insert



3 piece grill assembly is precision CNC-machined from billet aluminum and consists of 2 grill pieces and a center cover plate. The grill includes an aluminum mesh insert and bolts into the stock mounting points with no drilling necessary. Available in various finishes.

**Important:** Factory steel trim not included.

**Note:** Installed in the factory grill filler (not included). \*Fusion coat.

MS27552M	1970-73	raw machined	324.99 ea
MS27552P	1970-73	polished	369.99 ea
MS27552MB*	1970-73	matte black	422.99 ea
MS27552BA	1970-73	blk anodized	422.99 ea
MS27552BK*	1970-73	gloss black	422.99 ea
MS27552CA	1970-73	clear anodize	422.99 ea

### ★ Outdoor Use ★ Four Layers of Protection

**FREE**  
Gift of Soft Cotton Liner  
\$150.00 Value



gray tan  
**DEALER AUTHORIZED**

Our exclusive soft cotton lining provides added protection against dings and scratches.

Plus



### WeatherBlocker™ Car Cover



The ultimate combination of protection and value! Designed for outdoor use, the Weather Blocker® cover is manufactured using a durable non-woven 4 layer material that provides a high level of protection against outdoor elements. The fourth layer is a soft cotton backing that further protects against scratches and dings. Each cover is sewn with double stitched seams that are strong and durable. Neoprene elastic is sewn into the front and rear hems to help secure the cover in place. Breathable and lightweight, Weather Blocker offers increased water resistance and protection from the sun's UV rays. Mirror pockets are featured on both sides of the cover. Non-scratch grommets are installed on each cover to allow the use of your tie-strap or lock. Specify gray or tan.

MT2700G	1967	149.99 ea
MT2800G	1968	149.99 ea
MT6683G	1969	149.99 ea
MT1600G	1970-73	149.99 ea
MT1800G	1974-81	149.99 ea
MT3100G	1983-92	169.99 ea
MT3400G	1993-02	149.99 ea



62441  
(large duster)



62443  
(mini duster)

### Pickup Layers of Dust with One Sweep!



An easy way of keeping your vehicle clean and free of dust, looking like it was just washed. It's specially treated cotton fibers lift dust off the surface without scratching the paint, even delicate lacquers. The more you use it, the better it works! Regular use maintains your car's appearance while significantly reducing frequency of washings.

62441	large duster	19.99 ea
62443	mini duster	10.99 ea
62444	buy both dusters and save!	25.99 set